

Job Name

Purchaser

Submitted to

Unit Designation

Location

Engineer

Reference

Schedule #

Approval

Construction

Specifications			
Model	Indoor Unit Model Number (US Code)		AC009BNHDCH/AA (CNH09HDB)
	Outdoor Unit Model Number (US Code)		AC009BXADCH/AA (CXH09ADB)
Performance ¹	Nominal Capacity	Cooling / Heating (Btu/h)	9,000 / 12,000
	Capacity Range	Cooling (Btu/h)	3,300 - 14,000
		Heating (Btu/h)	2,800 - 15,000
	SEER / EER		20.6 / 13.10
	COP (nominal heating)		3.8
	HSPF		10.8
AHRI Certification Number		207465438	
Power	Voltage	ø / V / Hz	1 / 208-230 / 60
	Working Voltage Range (VAC)		176 - 254 (max. 3% deviation from each)
	Operating Current (min. / std. / max.)	Cooling (A)	1.4 / 3.3 / 6.4
		Heating (A)	1.1 / 4.4 / 8.9
	Max. Breaker	Amps	15
Min. Circuit Ampacity (A)	10.9		
Dimensions	W X H X D (in.)	Indoor Unit	33 7/16 X 9 13/16 X 27 9/16
	Duct Connections (W X H)	Outdoor Unit	31 1/8 X 21 9/16 X 11 1/4
		Supply (in.)	32 3/16 X 8 11/16
		Return (ID, in.)	32 3/16 X 8 11/16
	Weight (lbs.)	Indoor Unit	58.9
Outdoor Unit	74.3		
Sound Pressure Level	Indoor Unit dB(A)	L / M / H	23 / 27 / 30
	Outdoor Unit dB(A)	Cooling / Heating (high)	46 / 47
Operating Temperatures	Outdoor	Cooling	23 ~ 122°F (-5 ~ 50°C)
		Heating	0 ~ 122°F (-18 ~ 50°C) w/ baffle
	Indoor	Cooling	-13 ~ 75°F (-25 ~ 24°C)
		Heating	61 ~ 90°F (16 ~ 32°C)
		T ≤ 80°F (27°C)	
Pipe Connections	Indoor & Outdoor	High side (flare)	1/4"
		Low side (flare)	3/8"
	Maximum (ft.)		65.6
	Maximum Vertical Separation (ft.)		49.2
Condensate Connection (with included adapter)		1 1/16" ID for 3/4" PVC	
Refrigerant	Type		R410A
	Control Method		Electronic Expansion Valve
	Factory Charge	lbs.	2.6
	Charged for		24.6 ft
	Additional Refrigerant		0.11 oz/ft over 24.6 ft
Compressor	Manufacturer		Samsung
	Type		Inverter Driven, BLDC Rotary
	RLA	Amps	6.0
Evaporator Fan	Type		BLDC (1) With Sirocco Fan (2)
	Air Volume	CFM (L/M/H)	244 / 258 / 297 (at standard ESP)
	Output (W) / FLA (A)	153 W / 2.10 A	
	Static Pressure	Standard ("WC)	0.18
Min. / Max. ("WC)		0.1 - 0.59	
Condenser Fan	Motor		BLDC With Axial Type Fan (1)
	FLA / Watts / CFM (max.)		0.42 A / 40 W / 1,060 CFM
Safety	Certifications	UL 1995	
	Devices: PCB fuses, indoor unit terminal block thermal fuse, current transformer, over-voltage protection, crankcase heating, temperature limit protection logic, compressor overload sensing		



General Information

- The outdoor unit shall supply power to indoor unit via 14 AWG X 3 power wire
- High-voltage terminal block temperature sensor to disable unit in the event of power connection overheating
- Integral condensate pump with maximum 29" lift from bottom of the unit with check valve and float switch that disables indoor should condensate overflow be detected.
- Auto-restart after power loss
- Soft-start compressor minimizing current inrush
- All heat exchangers shall be mechanically bonded aluminum fin to copper tube
- The condensing unit heat exchanger salt spray test method: ISO-9227 - the heat exchanger showed no unusual rust or corrosion development to 500 hours.
- Base pan heater equipped as standard

Option settings

- The outdoor unit shall have snow accumulation prevention option setting to prevent snow drifting against an idle outdoor unit.
- Night-time Quiet Mode: reduction of operational sound during (automatic or manual activation).
- Emergency Temperature Output (ETO) function: when indoor unit is in error status or when room temperature exceeds configurable temperature level, the system outputs a signal to an external source, e.g., backup system, building management system, alert device (ex: status light, warning lamp, buzzer).
- System can be set up as heating/cooling, cooling only, or heating only via outdoor unit option settings.
- Maximum Current Control configurable from 50% - 100% via outdoor unit, wired controller, or central controller

Indoor Fan

- Indoor fan is sirocco type
- Three fan speed settings and auto setting
- Smart pressure control feature that adjusts fan speed based on ESP delivering consistent heating and cooling power
- The indoor unit shall have a smart-tuning function that can provide optimized comfort by allowing the occupant to offset the fan CFM curve with a wired remote controller (MWR-WG00UN) to increase or decrease airflow.
- The indoor unit shall have automatic air volume scanning for simple setup and optimized comfort settings for the occupant.

Construction

- Outdoor unit shall be galvanized steel with a baked-on powder coated finish for durability
- Indoor Unit: Insulated, galvanized steel.

Controls

- Control wiring shall be 2 X 16 AWG
- No additional interface modules/adapters are required when connecting to Samsung central control options.
- The unit shall be operated via a wireless or wired remote control with DDC type signal
- Dual set temperature support when connected to MWR-WG00UN Advanced Wired Controller or central control options.
- Wired or wireless controllers must be purchased separately

Refrigerant System

- The compressor shall be hermetically sealed, inverter-controlled BLDC rotary type.
- Refrigerant flow shall be controlled by an electronic expansion valve at outdoor unit

Warranty

10 Years compressor, 10 years parts, 1 year limited labor when registered

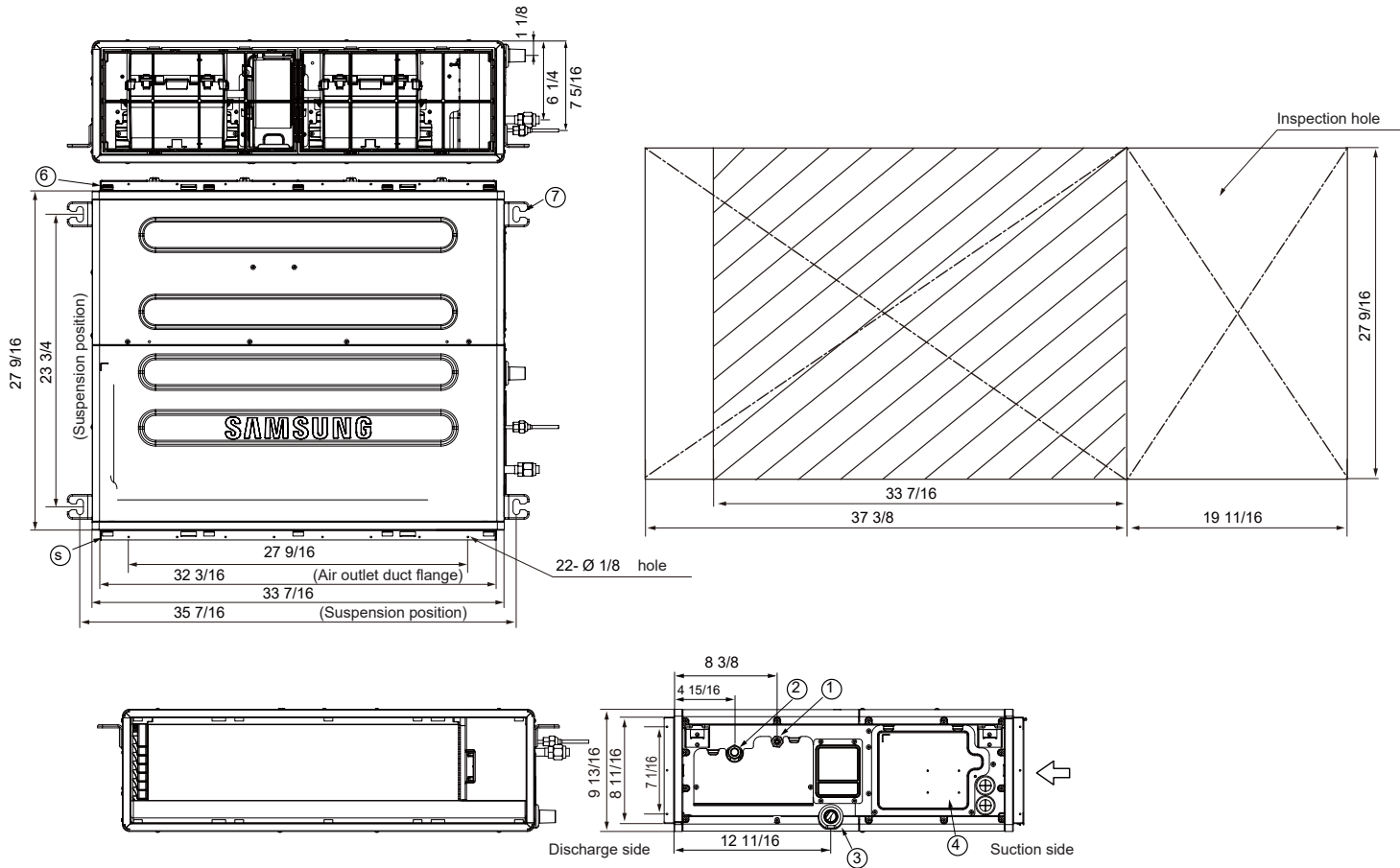
¹ Certified in accordance with the AHRI Unitary Small Air-Source Heat Pumps (USHP) Certification Program which is based on the latest edition of AHRI Standard 210/240.

Samsung HVAC maintains a policy of ongoing development, specifications are subject to change without notice. Refer to www.AHRIdirectory.org for current reference numbers.

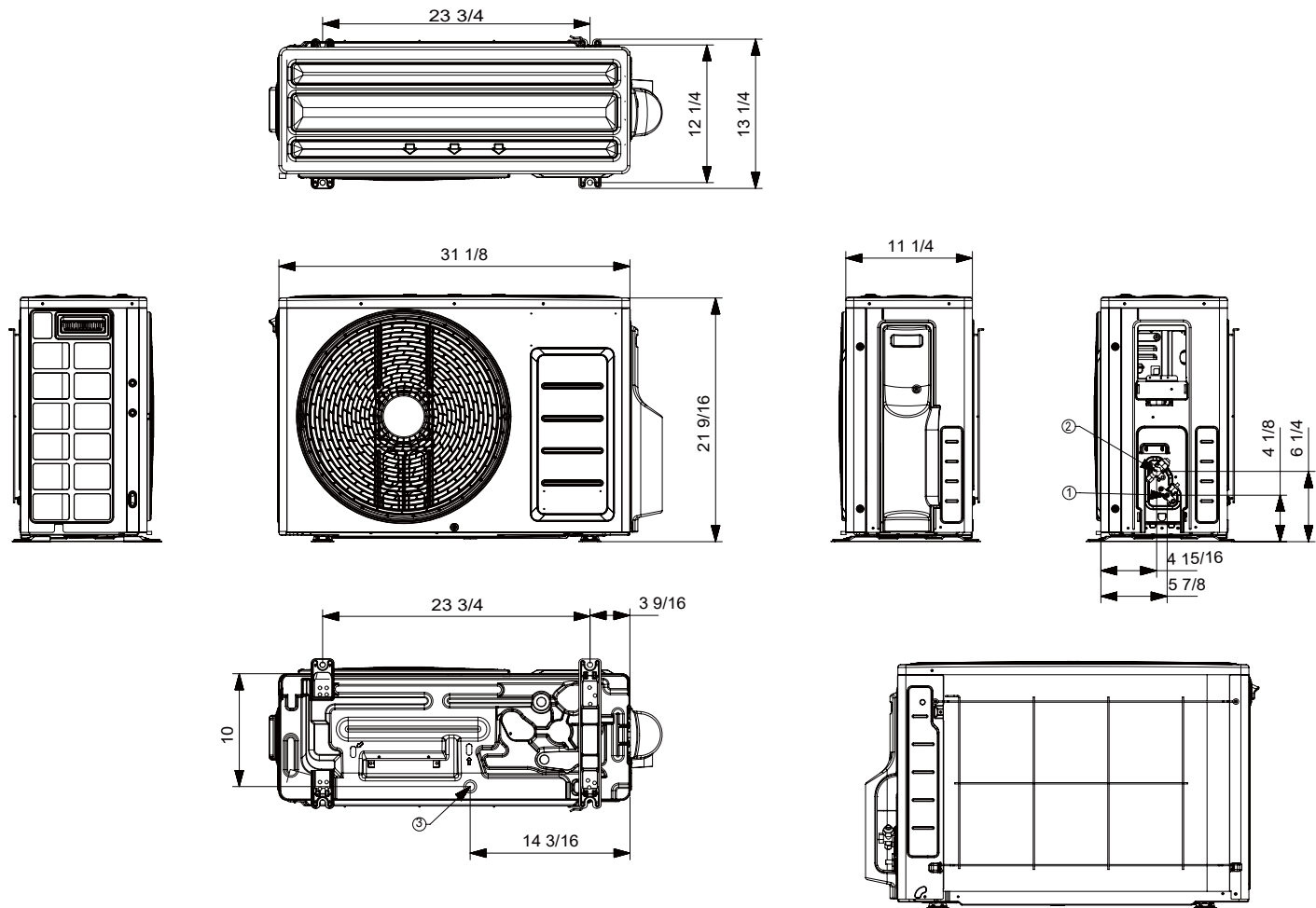
Select models are ENERGY STAR Labeled. Proper sizing and installation of equipment is critical to achieve performance. Split system air conditioners and heat pumps (excluding ductless systems) must be matched with appropriate coil components to meet ENERGY STAR criteria. Ask your contractor for details or visit www.energystar.gov.

Optional Accessories

Wired Controller	Advanced	MWR-WG00UN
	Touchscreen	MWR-SH11UN
Thermostat Adaptor (for connection to a standard 24VAC thermostat)		MIM-A60UN
Wireless Signal Control	Wireless Signal Receiver	MRK-A10N
	Wireless Controller	AR-EH04U
Wi-Fi Adapter		MIM-H05UN
External Temperature Sensor		MRW-TA
Filter Box		FB-DS1
External Contact Control		MIM-B14
Wall Bracket (for outdoor unit)		CKN-250
Wind Baffles	Front	WBF-3M
	Back	WBB-5M
Hail Guard Kit (includes back and side guards)		HGK-1
Line Sets - insulated and flared, interconnect cables included	25' - ILS-2506	
	50' - ILS-5006	



No.	Name	Description
①	Refrigerant Liquid Pipe	Ø 1/4"
②	Refrigerant Gas Pipe	Ø 3/8"
③	Condensate Drain	3/4" (OD 1.05")
④	Power & Comm. Wiring Conduits	-
⑤	Supply Air Flange	-
⑥	Return Air Flange	-
⑦	Hook	-



No.	Name	Description
1	Refrigerant liquid pipe	Ø 1/4
2	Refrigerant gas pipe	Ø 3/8
3	Drain hole	Connect with provided drain plug