



**VAN ISLE WATER**

**The Water System Experts**

**Since 1972**

**2021**  
**POOL & SPA**  
**VANISLEWATER.COM**



# CARVIN

POOL EQUIPMENT



**NEWTOWN**  
SILVER SERIES



**DOWNTOWN**  
DIAMOND SERIES



**REDWOOD**  
DIAMOND SERIES

## SILVER SERIES

- ❖ HIGH QUALITY WALLS
- ❖ STRONG FEET CONNECTION
- ❖ SNAP IN UPRIGHTS
- ❖ STABLE & HIGH WALL RAILS
- ❖ ROBUST STRUCTURE & TOP THICKNESS
- ❖ CLEAN AND ULTRA-MODERN DESIGN
- ❖ SALT FRIENDLY
- ❖ 30 YEAR WARRANTY

Description	Item #	List
Newtown 18' Round 52" Deep	PL-NEW18R	

## DIAMOND SERIES

- ❖ AJUSTABLE LEDGES COVERS
- ❖ THICK & ROBUST LEDGES
- ❖ HIGH QUALITY WALLS
- ❖ INTEGRATED WIRE TUBE MANAGEMENT
- ❖ STRONG FEET CONNECTION
- ❖ SNAP IN UPRIGHTS
- ❖ STABLE & HIGH WALL RAILS
- ❖ ROBUST STRUCTURE & TOP THICKNESS
- ❖ CLEAN AND ULTRA-MODERN DESIGN
- ❖ SALT FRIENDLY
- ❖ 30 YEAR WARRANTY

Description	Item #	List
18' Round 52" Deep	PL-DOWN18R	
Downtown 12'x24' Oval 52" Deep	PL-DOWN1224OV	
15'x30' Oval 52" Deep	PL-DOWN1530OV	
18' Round 52" Deep	PL-RED18R	
Redwood 12'x24' Oval 52" Deep	PL-RED1224OV	
15'x30' Oval 52" Deep	PL-RED1530OV	

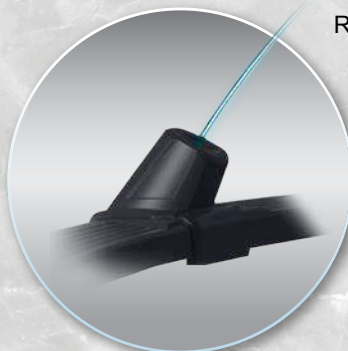
## PREMIUM UPGRADES (DIAMOND ONLY)

Description	Item #	List
2 Starjet Bundle - Grey (11C)	JP-94160001K	
Starglow Starter Kit (Controller, Power Supply, Remote)	JP-9413612000	
Starglow Light (each)	JP-9413612001	



### STARGLOW UPGRADE

Incorporate an LED light system into your uprights.



### STARJET UPGRADE

Incorporate an illuminated waterjet system.



## POOL EQUIPMENT PACKAGES

### Package #1

PL-EQUIPSM

Includes	Item #
• 1/2 HP Maxi Pool Pump 60Hz 115v	JP-94026190
• 16" Pacific Sand Filter w/ 6 Position Dial Valve	PL-OC160B
• Filter Sand (20-40) Standard 22.7kg	PP-SAND20

### Package #2

PL-EQUIPLG

Includes	Item #
• 1 HP Maxi Pool Pump 60Hz 115v	JP-94026192
• 19" Pacific Sand Filter w/ 6 Position Dial Valve	PL-OC190B
• Filter Sand (20-40) Standard 22.7kg	PP-SAND20

### Options:

Description	Item #	List
OLLO Salt Chlorine Generator System	JP-94180186	
White Aqualoon Filter Media 1.5 lbs	AQ-700	
Solar Cover 18'	PL-SC18R	
Solar Heater	GAM-4721	

## POOL ACCESSORIES PACKAGE

### Item #:

PL-ACCESSORIES

Includes	Item #
• Wide-mouth Skimmer / Inlet Package	PM-ACM19296
• A-Frame Ladder Plastic	PM-ACM101ASG
• Pool Carpet	PM-ACM847DB
• Vacuum Hose 1 1/4" x 25'	PM-VH1225
• Telescopic Pole 8-16 Ft (Blue)	PM-VPOLE16
• Floating Thermometer	PM-T
• 100 Test Strips - Total Cl & Br, Free Cl, Ph, Ta	AC-5
• Butterfly Vacuum Head Splash	PM-OC12CS
• Leaf Skimmer	PM-ELN

## ADD-ONS

Description	Item #	List
Steps w/ Handrails & Soft Touch Anti-Slip	PM-ACM1232STG	
Resin Deck Ladder w/ Protective Barriers	PM-ACM41A5G	
Starbright Colour LED Light/ Return	JP-94132800	



PACIFIC SAND FILTER



OLLO CHLORINE GENERATOR



MAXI POOL PUMP



STARBRIGHT LED RETURN



DECK LADDER & STEPS



SOLAR HEATER



## CARVIN MAGNUM POOL PUMP

- Carvin Pumps Exclusive RingLok access to remove motor from the pump's wet end. No Tools needed!
- Quieter operation, Energy Efficient Motor.
- Carvin Pumps Patented aircooled heat sink allows pump to run dry without damage!
- Replacement for Whisperflo pumps.



HP	Max Head		Amps		Item #	List
	30'	40'	115v	230v		
1/2	60 ft	8.8	4.4		JP-94030012	
3/4	80 ft	14	7		JP-94030020	
1	85 ft	16	8		JP-94030038	
1 1/2	85 ft		10.5		JP-94030046	
2	85 ft		11		JP-94030087	

HP	GPM Flow @ Feet of Head					
	30'	40'	50'	60'	70'	80'
1/2	53	44	30	-	-	-
3/4	78	73	65	56	48	-
1	102	92	78	65	48	-
1 1/2	-	122	112	96	82	52
2	-	138	125	108	94	68

## CARVIN VARIABLE SPEED PUMP

- Variable Speed Pumps are intended to run on the lowest speed to maintain a sanitary environment, which, in turn, minimizes energy consumption.
- Patented air-cooled heat sink allows pump to run dry without damage to shaft seal. UNCONDITIONAL ONE-YEAR WARRANTY AGAINST SEAL FAILURE.
- Exclusive dual Ring-Lok™ design gives "tool free" access to strainer basket and pump internals.



HP	Max Head		Max		Item #	List
	3450 RPM	Voltage	Amps			
1.65	80	230V	10.0		JP-94026117	
2.7	91	230V	10.5		JP-94026140	

## CARVIN MAXI ABOVE GROUND PUMP

- Patented air-cooled heat sink allows pump to run dry without damage to shaft seal. UNCONDITIONAL ONE-YEAR WARRANTY AGAINST SEAL FAILURE.
- Exclusive Ring-Lok Strainer allows "tool free" access to the strainer basket.
- Cord length 25'.



HP	Max Head		Amps		Item #	List
	30'	40'	115v	230v		
1/2	35 ft	8			JP-94026190	
1	41 ft	9			JP-94026192	

HP	GPM Flow @ Feet of Head		
	10'	20'	30'
1/2	76	67	47
1	76	68	52

## JANDY PRO SERIES FLOPRO POOL PUMP

Designed with an innovative adjustable base, allowing for simple installation on new construction, or quick and easy replacement of existing pumps.



- Medium-head, high-flow pump in an ultra compact body. Excellent choice for tight equipment areas.
- Ergonomic cam-lock lid with easy alignment indicators.
- Equipped with 2" unions & 2" internal threads.
- Quiet operation.

HP	Max Head		Amps		Item #	List
	30'	40'	115v	230v		
3/4	55'	5.4	10.8		JAN-FHPM07	
1	64'	7.1	14.2		JAN-FHPM1	
1 1/2	72'	8.0	16		JAN-FHPM15	

HP	GPM Flow @ Feet of Head			
	30'	40'	50'	60'
3/4	52	46	28	-
1	82	69	50	20
1 1/2	112	95	78	55
2	125	110	96	75

## JANDY PRO SERIES FLOPRO VARIABLE SPEED PUMP

Variable-speed motor allows for dramatic energy savings, especially when operated at lower speeds. The innovative adjustable base allows for simple installation on new construction, or quick and easy replacement of existing pumps.



- Features a totally enclosed fan-cooled (TEFC) permanent magnet brushless DC motor for cooler operation and extended motor life.
- Advanced motor design allows VS FloPro to run at energy-saving lower speeds for significantly quieter operation.
- High-performance pump in a compact body. Fits easily in small equipment areas.

HP	Max Head		Max		Item #	List
	Head	Voltage	Watts			
1.65	70	208-230	1600		JAN-VSFHP165AUT	
2.7	90	230	2400		JAN-VSFHP270AUT	

## LEAF TRAP / STRAINER

When using any pump and are planning on placing the pump before the filtration system, it is required by the manufacturers to have a leaf trap/priming pot in order for your warranty to be valid.



Disc.	Suction	Item #	List
1 1/2" union	FIPT or use WW-4004060	WW-3105400	
2" union	FIPT or use WW-4005570	WW-3106600	
	Replacement Basket	WW-3193230	
	Cover O-Ring	OR-437	



## SPECK X DUAL VOLTAGE VARIABLE SPEED POOL PUMP

- Environmentally friendly and cost efficient.
- 3 adjustable power levels which greatly reduce the operating cost at a reasonable investment.
- Levels can be set to range from 50 Watts/1000 RPM to 1000 Watts/3500 RPM (in increments of 10 Watts).
- High performance, medium head pump uses a state of the art axial flux permanent magnet brushless-DC motor controlled by advance logic electronics.
- Cooler and quieter operation at a fraction of the cost of a standard PSC motor.
- Ideally suited for pools up to 36,000 gallons (24 hour operation), the pump operates at a maximum system flow of 100 gallons per minute (GPM) at 1000 watts (3500 RPM).



HP	Voltage	Speed	Item #	List
1.1	115-230	Single	SPK-AG215V100T000	

## SPECK X BADU STREAM II JET SYSTEM

- The Badu Stream II Jet System is a "water treadmill" aimed at pleasing a variety of exercise styles. The system accommodates installation in limited space and varying pool wall designs.
- Two Jets complete with one Speck Pump Model 21-80/33 and control box with GFCI. The most powerful single pump jet system available providing the recreational swimmer with an intermediate level of exercise.
- Easy Installation for in-ground & above-ground pools
- UL Listed, single phase with thermal overload (no motor starter required)
- **Warranty:** 2 years



HP	GPM	Voltage	Amps	Item #	List
4	400 @ 14 PSI	208 - 230	19	SPK-SS48424001SW	

## WATER FEATURE PUMPS

### OPWG SERIES

- Produces a maximum flow rate with minimal electrical consumption.
- Extremely quiet - perfect for indoor waterfalls.
- Housing is moulded from glass filled polypropylene. The motor is enclosed for excellent protection and weather resistance.
- 1/8 HP: 2" Suction x 1 1/2" Discharge w/8' power cord. 1/6 & 1/4 HP have no power cord.
- 1/6 & 1/4 HP: 1 1/2" Suction x 1 1/2" Discharge w/ no power cord.



HP	Max		Amps		Item #	List
	GPM	Head	115v	230v		
1/8	37	11'	1.1	-	LG-566020	
1/8	55	12'	1.3	-	LG-566021	
1/6	75	21'	2.5	1.25	LG-566023	
1/4	105	22'	3	1.5	LG-566024	

	GPM Flow @ Feet of Head			
	5'	10'	15'	20'
LG-566020	29	5	-	-
LG-566021	45	25	-	-
LG-566023	71	59	45	10
LG-566024	97	84	68	45

### EQ & EQW (WATERFALL)

All Noryl plastic pump for large pools, fountains and water attractions demanding high flow rates and continuous operation.

- Flanged 6" suction, 4" discharge.
- Bolt-on strainer pot.
- Single-phase (3, 5 & 7.5 HP).
- 3 Phase, 460/230-208v (3, 5, 7.5, 10, & 15 HP)



HP	RPM	Amps	Volt.	lbs	Item #	List
3	1750	38-19	115/230	126	PAQ-EQW3	
5	3450	19.6	230	126	PAQ-EQ5	
5	1750	19.6	230	126	PAQ-EQW5	
Strainer 6"					PAQ-P340013	
O-Ring, Strainer Lid					PAQ-P350166	

Model	GPM Flow @ Feet of Head							
	15'	20'	25'	30'	40'	50'	60'	70'
EQW3	-	300	-	-	-	-	-	-
EQ5	-	375	-	350	330	300	260	225
EQW5	660	600	500	-	-	-	-	-



# SAND FILTERS



## SPLASH SAND FILTERS W/ 6 POSITION DIAL VALVES

- Clear sight glass for backlash inspection.
- Multi-port valve with quick-connect barrel unions.
- Hydraulically balanced laterals to maximise water flow and filtration.
- Plastic wound tank.
- Blow-molded tank is corrosion-resistant, and UV-resistant.



Dia.	Sand Required	Designed Flow Rate	Item #	List
16	100	35 gpm	PL-OC160B	
19	150 lb	42 gpm	PL-OC190B	
22.5	250 lb	52 gpm	PL-OC225B	
24	300 lb	62 gpm	PL-OC240B	

## TRITON II SAND FILTERS W/O DIAL VALVE

- Heavy-duty closure provides easy inspection.
- Easy-to-read pressure gauge with air relief valve.
- Swing-away diffuser allows instant access to sand and all internal parts.
- Bulkhead connectors are threaded for easy installation and service.
- Combination sand and water drain makes servicing and winterizing fast and easy.
- Maximum Operating Pressure 50 PSI.
- Multiport Valve Sold Separately.



Dia.	Sand Required	Max. Flow Rate	Item #	List
19	175 lb	38 gpm	PEN-TR40	
21	225 lb	49 gpm	PEN-TR50	
24	325 lb	63 gpm	PEN-TR60	
30	600 lb	100 gpm	PEN-TR100	
36	925 lb	140 gpm	PEN-TR140	

## CARVIN TOP MOUNT DIAL VALVE

	Mount Style	Size	Item #	List
Laser	Clamp	1 1/2"	JP-39263020K	
Sandstorm	Clamp	2"	JP-39000609K	



## AQUALOON FILTER MEDIA

Aqualoon is a unique, new filter media for sand filter and swimming pool filter cartridges. Aqualoon polyethylene balls are much easier to use and maintain than normal filter sand or filter lens.

- Aqualoon is easy to use.
- 700 g Aqualoon (1 box) equivalent to 25 kg filter sand.
- Filter media for sand filter and cartridge filter.
- Can carry dirt particles as small as 3 micron filter.



Box	Item #	List
700 g	AQ-700	

## CARVIN TM SANDSTORM SAND FILTER

- Features a corrosion resistant and UV resistant precision molded one piece tank.
- 2" plumbing for less flow restriction.
- Sturdy injection molded base for secure tank support.
- 7-way dial valve controls filtration, backwash, rinse, whirlpool, drain, winterize, and test operations.
- TM31 and TM36 models feature exclusive snowflake lateral system which optimizes use of sand bed on larger filters. Easy service "Snap-Fit" laterals.
- Water distribution system features unique diverter and basket to direct water evenly across the entire surface of the sand without sand migration or channeling.



Dia.	Sand Required	Max. Flow Rate	Item #	List
26"	350 lb	75 gpm	JP-TM267	
31"	500 lb	96 gpm	JP-TM317	
36"	800 lb	141 gpm	JP-TM367	

## FILTER MEDIA

Std. Filter Sand	50 lb	Bag	PP-SAND20
Diatomaceous Earth	22.7 kg	Bag	CH-DE22



## CARVIN CFR CARTRIDGE FILTERS

- Ring-Lok access to filter element for "tool-free" servicing.
- Other applications include Marine Aquarium Filtration, Industrial Tank Filtration.
- Unique low profile enables installation in half the vertical space of most filters.



SQ. FT. Filter Area	Max. Flow Rate	Item #	List
50	50 gpm	JP-94222528	
100	100 gpm	JP-94222536	

## MULTICYCLONE FILTERS

A revolutionary product designed to greatly reduce filter backwashing and maintenance by capturing particulates before they reach the pool filter.

- 2" Unions. • Maximum 58 PSI.
- Min.13 gpm, Max. 132 gpm.



	Item #	List
Cyclone Filter	WA-2003070	
Mounting Stand	WA-200373	

## CMP WATER FEATURE CARTRIDGE FILTER

All water features must use filtered water for optimum performance and to prevent damage to the feature. The CMP water feature filter is the perfect accessory for waterfalls, deck jets, bubblers and other water features.

- Ergonomic Lock Ring for Easy Lid Removal & Quick Filter Cleaning.
- Unibody Construction.
- Includes Pressure Gauge.



SQ. FT. Filter Area	Max. PSI	Item #	List
Slip	50	50	CMP-25504650000

## CMP SIDE MOUNT DIAL VALVES (FITS PENTAIR)

Multiport Valve	Size	Item #	List
TR40, 100 & 140	1 1/2"	PEN-261173	
TR100 & 140	2"	PEN-261055	

## CMP TOP MOUNT DIAL VALVES (FITS PENTAIR)

Mount Style	Size	Item #	List
TA40-60	Clamp	1 1/2"	PEN-262506
TA100	Clamp	2"	PEN-261185

## CARVIN CARTRIDGE FILTER

- Ring-Lok access to filter element for "tool-free" servicing.
- Coreless elements allow easy cleaning from inside-out with a garden hose.
- One-piece body with 2" MIPT threaded connections is injection-molded from glass-filled thermoplastic corrosion resistant.
- Unique low profile enables installation in half the vertical space of most filters.



	SQ. FT. Filter Area	Max. PSI	Item #	List
Slip	25	80	JP-CFR25	

## JANDY NATURE2 FUSION INGROUND MINERAL SANITIZER



Nature2 Fusion Inground is a robust and convenient chlorine and mineral sanitizing system. This easy-to-use solution automatically dispenses Nature2 minerals and chlorine for a sparkling clean pool.

- An effective pool sanitizing solution. It uses mineral technology to provide superior pool water quality (sold separately).
- Connects easily to any 2" or 2 1/2" pipe, and is the perfect complement to the Jandy Pro Series Versa Plumb system.
- Simplify the winterizing process in just seconds.

### Features:

- Easy to install and compatible with most swimming pool filtration systems.
- Mineral sanitizer and chlorine dispenser in one.
- Control chlorine output with easy-to-read adjustment handle.
- Designed to sanitize in-ground swimming pools up to 45,000 gallons.



Item #	List
JAN-FUSIONC	

## JANDY NATURE2 FUSION MINERAL PURIFIER CARTRIDGE

Nature2 Fusion Inground is a robust and convenient chlorine and mineral sanitizing system. This easy-to-use solution automatically dispenses Nature2 minerals and chlorine for a sparkling clean pool.

The Nature2 Fusion Cartridge is designed to sanitize swimming pools up to 130,000 litres (34,300 Gal) with the Nature2 Fusion Inground.



Item #	List
JAN-50002000	



# POOL SANITIZING EQUIPMENT

## ROLA-CHEM GENERATION II DIGITAL ORP/PH CONTROLLER



### 554000 - Digital ORP/pH Controller, 120 volt

Includes: Controller, flow cell with flow switch, probes, 3/8" tubing, fittings.

#### Features:

- Digital readouts.
- ORP technology.
- Redox sensor.
- Proportional feed.
- Dip switch programmable settings.
- Data Port Modem compatibility.
- Lockout security feature.
- Built-in out-of-range safety timeouts.
- pH calibration, Acid or base feed.
- Globe flow cell with flow switch.



#### Technical Specifications:

	pH	ORP	Feed Cycle
• Factory Setting:	7.4	650 mV	.6 sec.
• Display Range:	6.8 – 8.2	0 – 995 mV	
• Setpoint Range:	7.0 – 8.0	400 – 900 mV	
• Feed Cycle Range:	.6 to 900 sec with 5-minute timeouts		
• Feed:	Automatic or manual		
• Maximum Amps:	5 Amps		
• Probes:	One-year limited warranty		

#### Rola Chem Feed Pump Output Rates

Model	Minimum Feed Rate/24HR	Maximum Feed Rate/24HR
RC25/53SC	0.10 GPD	12 GPD
RC103SC	0.30 GPD	32 GPD

Item #	List
Digital ORP/PH Controller Programmable	
<b>Includes:</b> PH / ORP Probes & Globe Flow Cell	ROL-554000
Feed Pump RC25/53SC 12 GPD 120v w/Cord, 30 PSI max	ROL-543700
Feed Pump RC103SC 32 GPD 120v w/Cord, 30 PSI max	ROL-543702
Feed Pump RC503SC 72 GPD 120v w/Cord	ROL-543703
Parts	
PH Probe Heavy Duty	ROL-550135
ORP Probe Heavy Duty	ROL-550136
Globe Flow Cell w/Flow Switch Connect	ROL-550180
120v Solenoid Valve, 3/8" FPT Stainless Steel	ROL-550290
Strainer Kit for Flow Cell Manifold	ROL-550591
Check Valve 3/8 Barb x 3/8 Barb	ROL-521160
ORP Probe Gold Tip	ROL-550201
Universal Mounting Board	ROL-550158
Replacement Tubing Black 13.5" for Acid	ROL-523114
Replacement Tubing Clear 13.5" for Acid	ROL-523115

## ROLA-CHEM PRO SERIES 300 PERISTALTIC PUMPS



The NEW PRO Series 300 Peristaltic Pumps maintain the best of the Rola-Chem Pro Series legacy while improving primary function and simplifying set up.



- New commercial design.
- Fully digital timer.
- Refined dosing increments - for more precise control.
- New, more versatile mounting options.
- Quick-release cover for fast tubing access, threeway switch controls timer/off/continuous, self-priming pump and clear Tygon and Black Norprene Squeeze Tubes.
- Retains a 30psi rating and versatile 18-ft. suction lift.
- Pumps operate on 9-minute cycles and are available in 120V or 240V corded or permanent wire configurations with maximum amps—2.5.

Model	Min Feed Rate/24 hr	Max Feed Rate/24 hr	Item #	List
RC-303	.10 GPD	12 GPD	ROL-543811	
RC-305	.34 GPD	38 GPD	ROL-543818	

## FLOATING CHLORINE DISPENSERS

- Twist lock cap and adjustable control ring.
- Spa - holds up to 1 3/4" chlorine or bromine tablets or sticks.
- Pool - holds six 3 in. or 3 lbs. of 1 in. tablets.



Item #	List
Spa PM-FCSPA	
Pool RA 330 PM-FCPOOL	

## POWERCLEAN ULTRA CHLORINATOR

The CMP chemical feeder is designed for the most demanding applications and boasts a variety of features. The Power Clean Ultra Chlorinator / Brominator is made for most pool, spa and combo pools and offers quick, clean installation and maintenance.



Type	Item #	List
In-Line	CMP-25280110000	
Off-Line	CMP-25280310000	



## CMP DEL AOP

- DEL's ozone systems provide clean, clear, and safe water for your pool, as well as a significant reduction in chemical use. Featuring DEL's exclusive Advanced Plasma Gap (APG) technology, these ozone systems provide modern technology, high performance, and unsurpassed life expectancy.
- DEL AOP is dramatically more powerful than Chlorine and other sanitizers, and even more powerful than Ozone alone. In AOP systems, the highly unstable hydroxyl free radicals react with dissolved waterborne contaminants in a series of strong oxidation reactions. This process happens almost instantaneously.
- AOP systems also destroy and prevent chloramines—formed when chlorine reacts with sweat or urine - that cause "pool smell", eye, and skin irritations which dramatically increases water clarity and improves the pool experience.



Model	Voltage	Amps	Max Flow Rate	Mount	Enclosure	Item #	List
DEL AOP 25	110/240VAC 50/60 HZ, 1Ø	0.3	20 GPM	Wall	CSA/NEMA 3   Indoor/Outdoor	DEL-SEC5001	
DEL AOP 50	240 VAC, 60 HZ, 1Ø	0.6	50 GPM	Floor or Wall	CSA/NEMA 3   Indoor/Outdoor	DEL-SEC11026	

## CMP DEL MDV MIXING DE-GAS VESSEL FOR DEL AOP SYSTEMS

- The Mixing De-Gas Vessel prevents bubbles from returning to the pool, which eliminates bubble noise and visibility. To be used in all indoor, covered, and vinyl-lined pools when used in conjunction with DEL AOP 25 units. The XL (MDV XL) version in conjunction with DEL AOP 50 units.
- When the flow enters the mixing vessel, the ozone bubbles are allowed to float up and accumulate at the top as the water exits out the bottom. The separated ozone passes through a float valve and is sent through a carbon destruct and neutralized to safely vent to the atmosphere.



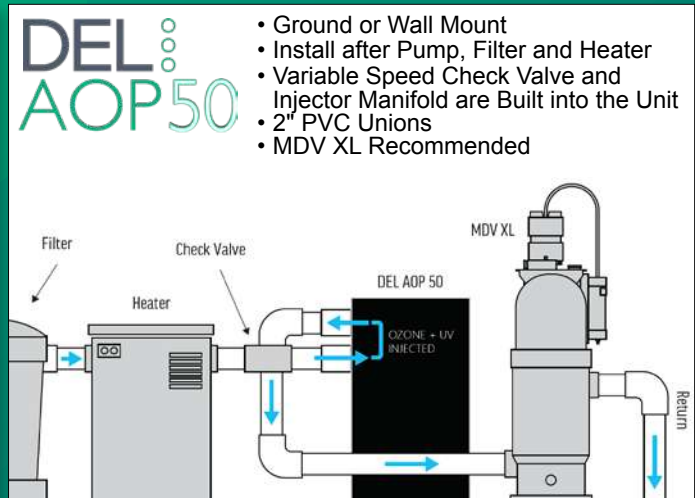
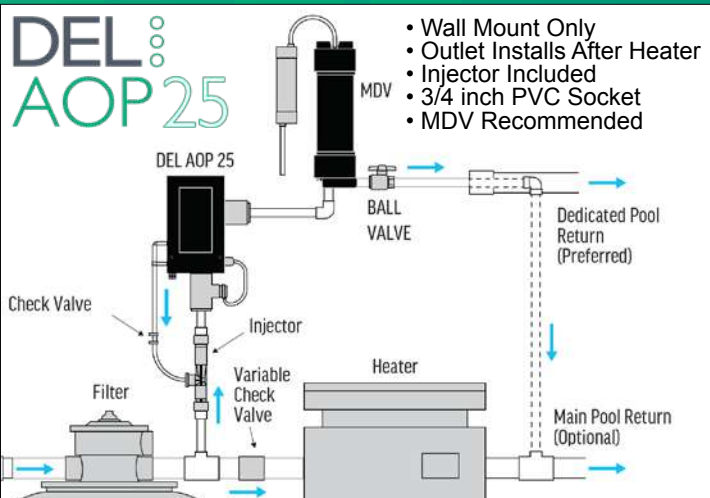
Model	Size	Works With	Max Capacity	Item #	List
MDV-10-08	Standard	AOP 25	25,000 gal.	DEL-MDV1008	
MDV-100	XL	AOP 50	50,000 gal.	DEL-MDV100	



Standard XL



AOP is dramatically more powerful than Chlorine and other sanitizers, and even more powerful than Ozone alone. In AOP systems, the highly unstable hydroxyl radicals react with dissolved waterborne contaminants in a series of strong oxidation reactions. This process happens almost instantaneously.





# POOL HEATING & LIGHTING

## ENERSOL EPDM SOLAR PANELS

You only have to look up to realize the primary benefit of solar heat - **it's free from the sun!** Using your existing pump and filter, our easy-to-install solar pool heater ensures warmer pool temperatures.

- No monthly heating bills.
- Cost effective way to heat your pool.
- EPDM rubber is completely resistant to pool chemicals & UV rays.



Item #	List	Item #	List
1' x 10' Panel ENE-1401SS		Solar Heater System Installation Kit ENE-RH	
<b>System Installation Kit Sold Separately</b>		Solar Touch Automatic Controller Kit ENE-ACVS	

Kit Includes: Installation Manual, Installation Tool, 2—extra O-Rings, O-Ring Lube, Roof Sealant, 2—End Caps, 2—Header End Connector.

Replacement Parts		Item #	List	Replacement Parts		Item #	List
Solar Panel & Header Repair Kit	ENE-REPKT	Solar Panel Header Clip (Pkg. 5)	ENE-SOL22	Install Tool & Lubricant Kit	ENE-SOL22T	Header O-Ring	ENE-30100
Rubber Splicing Kit	ENE-SPLCE						
Solar Panel Header (Pkg 4)	ENE-HWN4P						

Enersol Sizing Guide (Recommended number of 1' x 10' Boxes)			
In-Ground Pools		Above Ground Pools	
12' x 24' (288 sq.ft.) =	14 - 22	15' Round (177 sq.ft.) =	9 - 13
14' x 28' (392 sq.ft.) =	20 - 29	18' Round (254 sq.ft.) =	13 - 19
15' x 30' (450 sq.ft.) =	23 - 34	21' Round (346 sq.ft.) =	17 - 26
16' x 32' (512 sq.ft.) =	26 - 38	24' Round (452 sq.ft.) =	23 - 34
18' x 36' (648 sq.ft.) =	32 - 49	27' Round (572 sq.ft.) =	29 - 43
20' x 40' (800 sq.ft.) =	40 - 60	12' x 24' Oval (257 sq.ft.) =	13 - 19
		14' x 28' Oval (349 sq.ft.) =	17 - 26
		15' x 30' Oval (401 sq.ft.) =	20 - 30
		16' x 32' Oval (456 sq.ft.) =	23 - 34
		18' x 33' Oval (529 sq.ft.) =	26 - 40

Use this sizing guide to establish the number of boxes of EnerSol Solar Panels needed. The lower number is for a south facing roof with full sun. West facing or more shade requires the larger number. The solar rule of thumb is: 50%-75% of the pool surface should be represented in the solar area. Indoor pools require 100% coverage. Additional boxes will give more heat, faster. Can be expanded easily, at any time. \*Based on vertical installation and ideal solar conditions.

## STARLIGHT LED CONTROLLER

- Lights Sold Separately.
- Remote control for easy use.
- Fit in a water return fitting.
- 10 colour changing modes.
- As many as 6 lights assembled together.
- No need to synchronize the lights.
- Non metallic light body, No bonding required.
- Manual colour changing with colour ring remote control.
- 7 static predetermined colours (including white).
- Stroboscopic effects, gradual change, speed control, brightness control.



Wattage	Item #	List
Controller Kit	JP-94132660	
Light Only	JP-941320120050	

## INGROUND POOL LIGHT REPAIR WEDGE

Soft Plastic / Rubber Light Wedge holds the pool light in place, when niche tab (screw hole) is stripped or broken. Fits all lights. Made with corrosion resistant polypropylene with a stainless steel screw.



Item #	List
Light Wedge JP-LIGHTWEDGE	

## HEATSAVR

Liquid solar cover for swimming pools: An alternative to conventional solar covers, except a lot easier to use. Evaporation accounts for up to 88% of heat loss from a swimming pool. Easiest cover for any pool @ any size or shape.



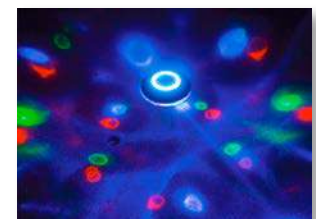
Item #	List
4 It Heatsavr CH-HEATSAVR	

## GAME WIRELESS SPEAKER & LIGHT SHOW

Pair the Wireless Speaker & Underwater Light Show with any Bluetooth compatible media player device to enjoy state-of-the-art sound quality synced to a captivating light show in your pool or even indoors.



- Rechargeable battery plays music and lights for up to 6 hours
- 100% waterproof construction.
- Built-in hanger.
- Range of up to 60 feet



Item #	List
Speaker/Light Show GAM-4312	

# POOL & SPA FITTINGS



4-57C230



4-57C160



4-57C290

## HI-TEMP CPVC SPECIALTY UNIONS

Description	Item #	List
1.5" S-2" SP x 1.5" MIPT	4-57C150	
2" Slip x 1.5" MIPT	4-57C160	
2" Slip x 2" MIPT	4-57C200	
3" Slip x 2" MIPT	4-57C230	
90 Elbow 2" Slip x 2" MIPT	4-57C290	

## 2" PVC SLIP X MIPT UNION

Item #	List
4-57C200W	



## 1 1/2 UNION ADAPTER

1 1/2" Barb x 1 1/2" MIPT

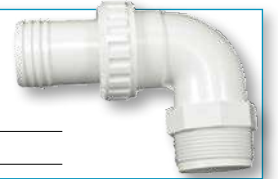
Item #	List
4-57C000	



## PVC UNION 90 DEG

1 1/2" Barb x 1 1/2" MIPT

Item #	List
4-57C21058200	



## PVC SELF-ALIGNING UNION

1.5" MIPT x 1.5" SPG Union

Item #	List
4-57C150W	



## PUMP UNION ASSEMBLIES

Union Nut w/ Tailpiece	O-Ring	Item #	List
1" S w/ 1" Slip	Yes	WW-4001990	
1 1/2" w/ 1 1/2" S	Yes	WW-4004060	
2" w/ 2" S	Yes	WW-4005570	
2 1/2" w/ 2" S	Yes	WW-4005990	
2 1/2" w/ 2 1/2" S	Yes	WW-4006010	
1 1/2" FBT x 2" Male Hayward Thd		WW-4004080	
2" FBT Repair Split Union		WW-0121109020	
2 1/2" FBT Repair Split Union		WW-0121109025	



## UNION TAILPIECE

Buttress Thread	Item #	List
1" 1" Slip	WW-4172010	
1 1/2" x 1 1/2" MPT	WW-4174060	
1 1/2" x 1 1/2" S x 2" Spg	WW-4175080	
2" x 1 1/2" S x 2" Spg	WW-4175010	
2" x 2" Slip	WW-4175040	
2 1/2" x 2 1/2" Slip	WW-4176010	
1 1/2" Union Gasket	WW-7114000	
2" Union Gasket	WW-7114010	



## HEATER UNIONS

### Heater Union Split Nut w/ Screws

Item #	List
1 1/2" WW-4005491	
2" WW-4005421	

### Heater Union Split Nut Tail Piece

2" Buttress Thread x 1 1/2" S	WW-4172090
2" Buttress Thread x 2" S	WW-4175050
2 1/2" Buttress Thread x 2 1/2" S	WW-4175980

### Heater Union Split Nut O-Ring Gasket

1 1/2"	WW-7114050
2"	WW-7114031





# WHITE GOODS

## CARVIN INLETS

• Sold in pairs.

Pool Style	Item #	List
Concrete	JP-IFC2	
Liner	JP-IFLST2	
Aboveground	JP-IFA2	
Flexible Wall	JP-IFDST2	



## CMP 3/4" EYEBALL

	Item #	List
White	WW-4001410D	
Black	WW-4001411D	



## CMP CONCRETE RETURN WALL FITTINGS

	Item #	List
White 2"	PEN-542423	
Black 2"	PEN-542424	



## CARVIN CONCRETE JET

• ABS body has a 1 1/2" slip connection for water and a 1/2" connection for air.

	Item #	List
Concrete	JP-C20E	



## 32" VGB UNBLOCKABLE CHANNEL DRAIN & SUMP

- Integrated Water Stop Design Prevents Plaster Separation & Retains Drain Shape
- Body Reinforcing Ribs
- Finishing Plugs for Unused Screws
- Single or Multiple Drain Use
- IAPMO Listed VGB Suction: Compliant to ANSI/APSP.
- Three 2" Socket x 2.5" Spigot Ports
- Floor or Wall Installation

Colour	Item #	List
White	CMP-25506320000	
Black	CMP-25506324000	



## CMP 2" SIGHT GLASS

Determine when the filter is backwashed by the clarity of the water. Helps eliminate wasted backwash water. Connects in line with the current system on 2 inch pipe.

- Horizontal, in-line style
- Durable ABS plastic housing
- 2-inch socket fits with 2-inch diameter piping.
- Includes 4 brackets bolts, nuts, and glass cylinder.

Item #	List
CMP-25625350000	



## GRATE & FRAME (VGB COMPLIANT)

	Item #	List
Round 8-10" Grate, Frame	PL-A10RCFR101	
Square 12" Frame, Grate	White CMP-25508120000L Black CMP-25508124000L	



## REMOTE AUTO FILL

- 1/2" ABS fill valve.
- Grey lid.
- 3/4" or 1/2" water inlet.
- Optional Overflow 1/2".
- 1.5" & 2" adapters included.

Item #	List
VA-WF420G	



## CARVIN (JACUZZI) PMT SKIMMER PARTS

	Item #	List
Basket	JP-43050707	
Cover	JP-43050509	
Weir	JP-43051002	



## CMP 2" FLOOR INLET - BLACK

- 2" Socket
- 1.5" Reducer

Item #	List
CMP-25527104000	



## LADDER TREAD

Molded plastic replacement ladder step for in-ground pool ladders.

Item #	List
JP-44156503	



## CMP UNIBODY SKIMMER

In-ground concrete skimmer with float valve

- Made of ABS plastic material.
- Designed to use for in ground, concrete and gunite, residential or commercial pools.
- Meets specific NSF commercial requirement; comes with 4-1/2-inch throat length
- 2-inch FIP threaded end connection.

Colour	Item #	List
White	CMP-25100010000	
Black	CMP-25100114400	



# WHITE GOODS

## CMP CONCRETE & VINYL LINER MAIN DRAIN

- Anti-Vortex

Item # List

Concrete Bottom & Side	White 2"	HAY-WG1054AV
------------------------	----------	--------------

Vinyl Liner Bottom & Side	White 2"	CMP-25515000000
	Black 2'	PL-MD2

Concrete Bottom & Side	White 3"	PL-MD3
	Black 3"	PL-MD3B



## MAIN DRAIN ACCESSORIES



Item # List

CMP Hydrostatic Relief Valve	CMP-256200000000
Collection Tube	HAY-SP1055

## NICHELESS ABOVE GROUND SKIMMERS

Plumbs with 1 1/2 inch PVC pipe. Surface skims from 360 degrees. The skimmer cup slides up and down with the water level. Removable leaf basket.



Item # List

PL-ALA251600
--------------

## CARVIN MAIN DRAINS

- Gunitite model features built-in "no leak" flange.
- Vinyl liner model features 2 gaskets to seal inside and outside of pool.
- Anti-vortex cover rated at 82 GPM.



Item # List

Concrete	JP-MO215AV
----------	------------

Liner	JP-MOL215AV
-------	-------------

## CARVIN WIDE MOUTH LINER SKIMMER KIT

- Suitable for liner or concrete pools.
- Includes Skimmer w/2 Drains & 2 Inlets.



Item # List

JP-WFLURK2
------------

## CARVIN ABOVE GROUND POOL SKIMMER

- Easy installation with 1 1/2" PVC slip connection accepting rigid or flexible PVC pipe.



Item # List

Black	JP-SVB
-------	--------

# ABOVE GROUND POOL EQUIPMENT

## BULK VACUUM HOSE

Comes in 3ft. sections

Item # List

1 1/4" x 3'	PM-VHB125
-------------	-----------

1 1/2" x 3'	PM-VHB150
-------------	-----------

Description	Item #	List
-------------	--------	------

Intex Wall Plug Fitting	GAM-4554
-------------------------	----------

Intex Wall Vacuum Hose Fitting	GAM-4558
--------------------------------	----------

Intex Pool Plug Cap	GAM-4562
---------------------	----------

Intex Shut Off Valve	GAM-4563
----------------------	----------

Intex Hose Adapter B	GAM-4572
----------------------	----------

Intex Plunger Valve	GAM-4573
---------------------	----------



GAM-4554



GAM-4558



GAM-4562



GAM-4563



GAM-4572



GAM-4573

Item #	List
--------	------

**Filter Hose Conversion Kit.** Convert from 40mm hose to 1 1/4" or 1 1/2" standard hose.



GAM-4550
----------

**Skim Filter Pump Adapter.** Allows replacement of Polygroup side mounted skimmer pump.



GAM-4552
----------

**Flexible PVC Hose Adapter.** Connects 1 1/2" PVC hose to GAME SolarPRO heaters ONLY.



GAM-4553
----------

**40mm to 1-1/2" Conversion Kit.** Converts 40mm hose to 1 1/2" standard filter ports.



GAM-4560
----------

**Hose Connectors.** Connectors that fit 1.25", 1.5", 32 mm & 40 mm standard and INTEX hose and 2" PVC plumbing.



GAM-4564
----------

**40mm Long/Short Connector Kit.** Connects 40mm hose to 1 1/2" standard filter ports - ONLY FOR SandPRO and SolarPRO products.



GAM-4K8001
------------



# ABOVE GROUND POOL

## GAME SOLARPRO CURVE SOLAR HEATER

The exclusive 'curve' solar heater design creates a maximum solar collecting area. The most heat efficient and least flow restrictive pool heater design generating enough transfer to increase pool temperature 5 degrees in five days, extending the pool season!

- Clear cover completely covers the panel to lock in heat.
- Tube volume is equal to 51' of 1.2" diameter garden hose.
- Adjustable, foldable legs to set the heater to maximize exposure to the sun.
- No bypass kit requires for pumps up to 1 HP.



Item #	List
GAM-4721	

## SANDPRO FILTER SYSTEMS

Quality filtration for today's smaller softside and steel wall above ground pools. The ultra quiet SandPRO cleans up to 10 times faster than standard cartridge filters. Motors feature a high flow rate with lower horsepower (HP) pump for efficient use of your electricity.

- Adapters for INTEX® pools included.
- 7 position multi-port valve.
- 32mm, 40mm, 1 1/4" & 1 1/2" hose fittings included.
- #20 silica sand **not included**.



Max. HP	Max. GPM	Max. Pool	Sand Required	Amps 115v	Item #	List
1/2	37	8,000	30 lb	2.5	GAM-4710	
3/4	52	20,000	80 lb	4.5	GAM-4711	

## ABOVE GROUND SKIMMER

- Champlain Plastics

Size	Item #	List
Standard	PM-ACM192ABS	
Wide Mouth	PM-ACM19296	



Standard



Wide Mouth

## POOL PUMP SMART TIMER

- 15 amp programmable automatic timer for a pool filter system.
- Provides consistent filtration and chemical disbursement
- Run times: 2, 4, 6 or 12 hour settings.



Item #	List
OLY-ACM828	

## PACIFIC POOL & SPA TEST KIT

- Tests Cl, Br & pH.

Item #	List
PM-TK2	



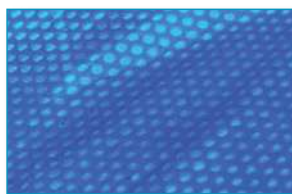
Item #	List
<b>Champlain Plastics ABS Threaded Return Fitting.</b> 1 1/2" inside thread for above ground pool.	
OLY-ACM191	
<b>Olympic Wide Mouth Skimmer Face Plate</b>	
OLY-UNI85ABSW	
<b>Above Ground Return Gasket - 2 Pack</b>	
OLY-ACM83	
<b>Wide Mouth Face Plate Double Gasket</b>	
OLY-ACM83WD	
<b>Olympic Replacement Weir.</b> For Olympic white skimmers - wide mouth and standard face plate types.	
OLY-ACM86	
<b>Olympic Pool Skimmer Lid</b>	
OLY-ACM87	

Item #	List
<b>Olympic White Skimmer Basket</b>	
OLY-ACM88	
<b>Double Square Rubber Gasket.</b> For standard small mouth skimmer.	
OLY-UNI83CD	
<b>Skimmer Vacuum Plate.</b> Standard Wide Mouth Skimmer, 7" OD.	
OLY-UNI89	
<b>GAME Strainer Grid.</b> Replacement for Intex strainer grid.	
GAM-41001	
<b>GAME Hose Adapter.</b> Replaces Intex surface skimmer small strainer hose B adapter.	
GAM-41003	
<b>GAME Hose Adapter.</b> Adaptor for Intex 28003 (Aqua).	
GAM-41004	

# POOL COVERS

## SOLAR INGROUND COVERS (12 MIL)

- Heavy-duty polyethylene material.
- Helps raise the water temperature by absorbing sunlight.
- Extends the pool season.
- Material is highly resistant to ultraviolet rays which inhibits deterioration.
- 5 Year limited warranty (2 year full).



Item #	List	Item #	List
12 x 24 PL-SC1224IG		18 x 36 PL-SC1836IG	
14 x 28 PL-SC1428IG		20 x 40 PL-SC2040IG	
16 x 32 PL-SC1632IG		24 x 44 PL-SC2444IG	

## SOLAR ABOVE GROUND COVERS (8 MIL)

- 3 Year limited warranty (1 year full).

Round		Oval	
Item #	List	Item #	List
12'	PL-SC12R	12 x 24	PL-SC1224OV
15'	PL-SC15R	15 x 30	PL-SC1530OV
18'	PL-SC18R		
21'	PL-SC21R		
24'	PL-SC24R		



## IN-GROUND POOL COVER REEL

Features sturdy construction and maximum durability. The swimming pool cover reel offers a unique design that allows for easy wheelbarrow-style maneuverability to take your cover to or from the pool.

- Material: Stainless steel bases + aluminum tubes.
- Light, durable, maintenance-free, and rust-free construction.
- Hand crank on one end for smooth operation.
- Easy for one person to roll up solar cover from pool.
- Easy maneuvering of reel with large treaded tires.
- Treaded casters offer effortless maneuvering for positioning reel.
- Fit in-ground pools up to 20' ft wide.
- Solar cover rolls up safely on aluminum tubing.
- Easy to assemble, carry, and storage.



Item #	List
PL-OC189B	

## WINTER INGROUND COVERS

- 12 Year limited warranty (2 year full).



Pool Size	Cover Size	Item #	List
16 x 32	22' x 38'	PL-WC1632IG	
18 x 36	24' x 42'	PL-WC1836IG	
20 x 40	26' x 46'	PL-WC2040IG	

## POOL COVER PUMP

- This versatile pump can be used in a variety of applications.
- Pumping down to 1/8" when operated manually without the switch.
- Automatic switch will activate "on" in approximately 2" of water & will shut "off" in approximately 1 1/2".
- Includes a garden hose adapter.
- 25' cord. • 2 Year Warranty.



	Amps	Cord	Item #	List
5APCP	5.0	25 ft	LG-505600	

GPM Flow @ Feet of Head				
1'	5'	10'	15'	20'
20	19	16	13	9

## OLYMPIC SUBMERSIBLE POOL COVER PUMP

Automatically removes up to 800 gallons of water per hour from your winter pool cover.

- Rated power: 1/3 HP.
- Maximum pump rate: 800 gallons per hour.
- Standard garden hose connection.
- 7" (17.8 cm) wide stabilizing base.
- Reusable filter pad.



Maximum Flow	Cord	Item #	List
800 GPH	25'	PM-PCW1	

## WINTER ABOVE GROUND COVERS

- 5 Year limited warranty (2 year full).



Pool Size	Cover Size	Item #	List
15'	19'	PL-WC15R	
18'	22'	PL-WC18R	
12' X 24'	16' X 28'	PL-WC1224OV	
15' X 30'	19' X 34'	PL-WC1530OV	

## SOLAR COVER ROLLER STRAP & GROMMET SET

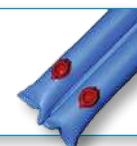
Includes:  
10 grommets, 22' vinyl strapping.



Item #	List
RR-577	

## WINTER COVER WATER BAGS

Item #	List
10' - 2 Chamber PL-WB10	







## VINYL LINER POOL VACUUM

- Triangular shaped, weighted.
- Cleans corners easily.
- Snap-adapt handle and replaceable brushes.



Item #	List
--------	------

Transparant	PM-VLINER
-------------	-----------

## LINER VACUUM HEAD

Triangular liner vacuum head with protective vinyl bumper and swivel connection.

Item #	List
--------	------

PM-VLINERSOLID	
----------------	--



## CONCRETE POOL VACUUMS

- Rugged 14" wide body with all plastic axles and handle pin.
- Commercial 22" swivel wheel flexible vacuum, has swivel adapter which allows 1 1/2" or 2" vacuum hose to move freely without twisting.



Width	Item #	List
-------	--------	------

14"	PM-V14	
-----	--------	--

22"	RAI-201286	
-----	------------	--

## SPECIAL CONTOUR VACUUM

Deluxe vacuum head with protective vinyl bumper and weights(w/ full bumper).

Item #	List
--------	------

PM-OC12CS	
-----------	--



## LARGE SHAPED VACUUM W/ SIDE BRUSHES

White ABS vacuum with protective vinyl bumper, weights and side brushes.

Item #	List
--------	------

PM-OC12LCS	
------------	--



## POOL & POND MINI VAC

Underwater vacuum cleaner perfect for above ground pools, spas, ponds & fountains.

Item #	List
--------	------

RAI-201146	
------------	--



## ALL-IN-ONE POOL & SPA VACUUM

- Includes leaf skimmer, dual nozzle, wide nozzle, slide-on brush and wall mount.
- Uses a simple pump action to create suction.

Item #	List
--------	------

GAM-4800	
----------	--



## AUTOMATIC SPA VACUUM

- Built-in battery-operated pump.
- Detachable scrubbing brush.
- Picks up stones, leaves, sand, dirt and other debris.
- Adjustable 130-195 cm telescoping handle.

Item #	List
--------	------

PM-AUTOSPAVAC	
---------------	--



## VACUUM HOSE (ROLLS)

	Item #	List
--	--------	------

1 1/4" x 30'	PM-VH1230	
--------------	-----------	--

1 1/4" x 35'	PM-VH1235	
--------------	-----------	--

1 1/4" x 40'	PM-VH1240	
--------------	-----------	--

1 1/2" x 25'	PM-VH1525	
--------------	-----------	--

1 1/2" x 30'	PM-VH1530	
--------------	-----------	--

1 1/2" x 35'	PM-VH1535	
--------------	-----------	--

1 1/2" x 40'	PM-VH1540	
--------------	-----------	--

1 1/2" x 45'	PM-VH1545	
--------------	-----------	--

1 1/2" x 50'	PM-VH1550	
--------------	-----------	--

## BULK VACUUM HOSE

Comes in 3ft. sections

1 1/4" x 3'	PM-VHB125
-------------	-----------

1 1/2" x 3'	PM-VHB150
-------------	-----------



## ECONOMY POOL BRUSH

- 18" ABS curved back and UV stabilized bristles.
- Fits standard poles.

Item #	List
--------	------

PM-EBR18	
----------	--



## HEAVY DUTY POOL BRUSH

- 18" polished metal back and UV stabilized bristles.
- Fits standard poles.

Item #	List
--------	------

PM-HBR18	
----------	--



## STAINLESS STEEL ALGAE BRUSHES

Aluminium Back (Not for liner pools).

Item #	List
--------	------

5"	PM-BRSS5
----	----------

10"	PM-BRSS10
-----	-----------

18"	PM-BRSS18
-----	-----------



## AUTOMATIC POOL CLEANING SYSTEM

- Uses the pool's filtration system.
- Easy to install - ready to use in less than 10 minutes.
- Includes 960 cm of hose.
- Requires a pump of min. 3/4 HP (or min. flow 6.5m<sup>3</sup>/h) to operate.

Item #	List
--------	------

PM-OC3250B	
------------	--





# MAINTENANCE EQUIPMENT

## SCRUBBER

w/ Swivel Joint Handle (4 5/8" x 10").

Item #	List
Scrubber PM-SCRUB	
Replacement Pads PM-SCRUBR	



## POOL CORNER BRUSH

• Great for hard-to-reach areas in pools, spas, hot tubs, ponds or fountains.

Item #	List
PM-EBRCORNER	



## THERMOMETERS

- ABS - Molded blown glass tube.
- Chrome/Brass - Glass tube secured in brass tubing.
- Floating - Injection molded inner body for increased accuracy.



Item #	List
ABS RAI-R141046	
Chrome/Brass PM-TC	
Floating PM-T	

## LEAF CATCHER W/ MESH BAG

- For liner & concrete pools.
- Large capacity leaf bagger connects to standard garden hose complete with handle and leaf bag.

Item #	List
RAI-211044	



## 1.5" BACKWASH HOSE

An easy way to clean the filtration system in your above ground pool.

Length	Item #	Price
25'	PM-OC70B	
50'	PM-OC71B	



## WINTERIZING GIZMO BOTTLE

Gizmo helps prevent frost damage to skimmers. Simply screw onto the skimmer using the screw thread.

Item #	Each
PM-OC104B	



## HEAVY DUTY LEAF RAKE SCOOP

- Scoop leaves from the pool bottom.
- Aluminium frame.
- Fits standard poles.

Item #	List
PM-HLSCOOP	



## ECONOMY LEAF NETS

- Polyester screen molded into polypropylene frame. Snap adapt handle fits standard poles.
- Perfect for removing floating debris & leaves.

Item #	List
PM-ELN	16.98



## LEAF NET C/W HANDLE

- Hand skimmer attached to 1" x 4' aluminium pole.

Item #	List
PM-LN4FT	20.83



## HEAVY DUTY LEAF NETS

- Perfect for removing floating debris & leaves.
- Heavy-duty Skimmer - 3/8 in. solid aluminium rod. Deep net molded into ABS snap-on replacement frame.

Item #	List
Heavy Duty Net PM-LNHD	27.48



## DEEP RAKE NET

- Scoop leaves from the pool bottom.
- Fits standard poles.

Item #	List
PM-ELSCOOP	18.68



## DELUXE PRO SERIES LEAF SKIMMER

Heavy-duty ABS plastic rim and nylon netting are long-lasting and durable, but gentle on pool siding and liners.

Item #	List
PM-OC366B	



## DELUXE PRO SERIES DEEP LEAF SKIMMER

Built with a durable thick frame for heavy duty use.

Item #	List
PM-OC365B	





## POLARIS P965IQ SPORT ROBOTIC CLEANER

A 4WD robotic cleaner that provides premium cleaning performance with the convenience of iAquaLink Control. By connecting to your home's Wi-Fi network, the P965iQ allows anytime, anywhere access to real-time scheduling programming and troubleshooting from any smart device using the app.



- Connect to home Wi-Fi for access anytime, anywhere
- **Intuitive Convenience at Your Fingertips** - remote control, recurring cleaning schedules, Easy Lift System and more.
- **Easy to Monitor Cleaner Status** - with dirty canister indicator, countdown timer, and troubleshooting tips.
- **Tangle-Reducing Swivel** - low-torque watertight swivel keeps cable from tangling during operation, and is now available on all Polaris 4WD robotic cleaners.

Item #	List
JAN-F965IQ	

## POLES

	Item #	List
Telescopic 8' to 16' Aluminium	PM-VPOLE16	
Deluxe Heavy Duty Pole 5'-15'	PM-BUL65B	
Super Heavy Duty Pole 8'-16'	PM-BUL64B	

## 12' FIBERGLASS COMMERCIAL POLE

For areas where protection from electrical shock is mandatory.

Item #	List
PM-VPOLE12FIB	

## TRIPLE HOOK HEAVY DUTY HANGER

- ABS with screws.

Item #	List
Pole RA 145 PM-OC18B	



## PRO SERIES LEAF SKIMMER

An attachment that is ideal for skimming leaves and other debris from the top or bottom of your pool. Reinforced with aluminum for extra strength.

Item #	List
PM-ACM983V	



## PRO SERIES DEEP LEAF NET

Extra large mesh net surface area for trapping bugs, leaves and other debris, while remaining light and agile for the best user experience.

Item #	List
PM-ACM984V	



## ELECTRONIC WATER LEVEL SYSTEM

Levolor is a completely electronic water level sensing system that can be used in all aquatic environments, new or existing. The system includes an adjustable sensing probe and monitoring computer with a splash timer to compensate for swells and surface disturbances. When the water level drops below the probe for approximately two minutes the computer opens a solenoid valve until the water reaches a level above the probe. Levolor's time clock activates and runs only when the equipment is running. Includes 50' of sensor wire. **Solenoid valve required.**



	Case	Item #	List
Levolor	6	LEV-LEV110A	

## COMMERCIAL THERMOMETERS

Angle, 1/2" mipt	PA-TANGLE
2 1/2" Dial, 1/2" mipt	PA-TDIAL



## FILTER SAVER SOCK

The ingenious pre-filter slips over your skimmer basket to catch larger debris such as hair, bugs, grass, leaves, pine needles, and prevents them from reaching your filter.

	Item #	List
Pkg of 5	PM-FILTERSAVER	



## FLOWVIS FLOW METER

FlowVis flowmeters are accurate, reliable and developed for pools, spas, fountains and water features. The patented design allows all FlowVis models to be installed next to other plumbing fittings without consideration for straight pipe runs. Can be installed both horizontally and vertically, or even upside down. NSF listed. PVC solvent weld connections.



Size	Flow	Item #	List
1 1/2"	10-90 GPM	FLV-FV15	
2" x 2 1/2"	10-110 GPM	FLV-FVC	
3"	100-220 GPM	FLV-FV3	
4"	220-400 GPM	FLV-FV4	

## ROLA-CHEM FLOWMETER

- Clamp on Style.

Pipe Size	Flow	Item #	List
1 1/2"	20-100 gpm	ROL-570341	
2"	30-150 gpm	ROL-570351	



## GAME DIGITAL THERMOMETER

- Oversized, easy-to-read LCD screen.
- Temperatures in Fahrenheit or Celsius.
- IPX7 waterproof design.
- Reaches five inches below the water surface.

Item #	List
GAM-DT	



## SMART SCOOP MEASURING TOOL

- Holds over six cups.
- Guides are molded into the scoop.
- Chemical resistant, BPA free material.



Item #	List
PM-SCOOP	

## 2 PART EPOXY PUTTY - 14 OZ

- Fill cracks or holes in decks and broken tile.
- Colour: White.



Item #	List
PM-AB2	

## 12" OUTDOOR WHITE CLOCK

- Features quartz second hand movement.
- Runs on 1 AA battery (not included).



Item #	List
PL-52600	

## AQUACHEK PRO TEST STRIPS

	Strips	Item #	List
100	Free & Total Chlorine, Bromine, pH, Alkalinity	AC-5	
100	Free & Total Chlorine, Bromine, pH, Alkalinity, Hardness, Cyanuric Acid (Stabilizer)	AC-7	
10	Salt Test Strips 400-7000 ppm	AC-SALT	



## VINYL LINER PATCH KIT

**Kit Includes:** 130 square inches of vinyl, 1 - 2 oz tube of vinyl bonding adhesive, 1 dauber applicator.



Size	Item #	List
2 oz	VYN-859	

## SAFETY POOL HOOK

Not to be used with telescopic poles.



	Item #	List
Safety Hook	RAI-221026	
Bolt Assembly	RAI-R221156	

## HIGH RANGE CHLORINE TEST STRIPS

- Chemically treated paper strips change colour to indicate concentration.
- Strips and colour chart in a waterproof plastic vial.



	Strips	Item #	List
10-600 PPM	100	AC-CL600	
10-200 PPM	200	LAM-4250BJ	

## PH TEST STRIPS

- Tests the full 0-14 pH range with a sensitivity of 1 pH units.



	Item #	List
100 Strips	HAC-TS95903	

## PACIFIC POOL & SPA TEST KIT

- Tests Cl, Br & pH.



Item #	List
PM-TK2	

## RA 752/754 TEST KIT REAGENTS

	Size	Item #	List
OTO	1/2 oz	RAI-OTO05	
OTO	8 oz	RAI-OTO8	
Phenol Red	1/2 oz	RAI-PHR05	
Phenol Red	8 oz	RAI-PHR8	
Phenol Red	16 oz	RAI-PHR16	



## HANNAH PH CHECKER

- The pH Checker series supplies users with fast and accurate readings from 0 to 14 pH with a resolution of 0.01 pH.
- This compact tester features an easy to read LCD and simple to perform two point calibration.
- The Checker is fast, accurate, lightweight and with 3000 hours of battery life, you don't have to worry about frequent battery replacement.
- Two point fast and accurate calibration



pH Range	Item #	List
0-14	HAN-H198103	
Calibration Solution	HAN-HI70007	

## DIGITAL TDS METER

Ideal for all water purification applications, wastewater regulation, aquaculture, hydroponics, and colloidal silver. Perfect for both consumer or commercial use.

- Measurement range: 0-9990 ppm with built-in digital thermometer.
- Highly efficient and accurate due to its advanced microprocessor technology



Item #	List
MUR-TDSMETER	

## LIFE RING

24" MOT Approved Life Ring.



Item #	List
PM-MA240	



# POOL CHEMICALS

## CHLORINE GRANULAR

70% Granular Chlorine (Calcium Hypochlorite) provides effective and reliable chlorination economically. It kills algae and bacteria instantly on contact. It can be used as routine daily maintenance or as a shock treatment.

Size	Item #	List
10 kg	HTH-GRAN10	
22 kg	HTH-GRAN22	
30 kg	HTH-GRAN30	



## ALGAECIDES

Highly effective in controlling the growth of fungi, multiple free-floating varieties of algae. Will not foam, react with chlorine or interfere with the efficient operation of sand, diatomaceous earth or cartridge filters. Effective at any pH level, reduces the chlorine demand of a pool and contains no metals which can stain pool walls.

Polymer Algaecide	Size	Item #	List
20%	1 L	HTH-ALGIMYCIN1L	
60%	1 L	HTH-ALG601L	



## CHLORINE EXTRA SUPER SHOCK

75% Super Shock for swimming pool. This chlorine will give you a shock treatment or super chlorination of water. An effective treatment, even during the winter season.

Size	Item #	List
6 kg	HTH-ESS6	
15 kg	HTH-ESS15	



## START-UP CHLORINATOR

Sanitizes, Clarifies and Protects against Algae Growth.

- Soluble granules.
- Use with multipurpose pucks.
- Shock treats and controls all algae.

Size	Item #	List
1 kg	HTH-30649	

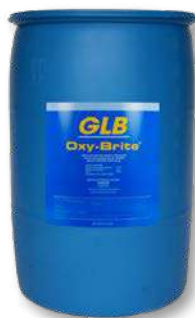


## OXY-BRITE

Non-chlorine shock oxidizer that creates sparkling water and shock treats in one step. Containing DuPont Oxone®, a powerful oxidizer, its powerful formula rids pool water of contaminants that cause odor and irritation, and brightens/clears the water with unique blue water brightening crystals.

- Swim immediately after treatment!
- Restores sparkle to cloudy water.
- Reduces sanitizer demand.
- Will not increase CYA levels.

Size	Item #	List
50 kg	HTH-72008	



## CHLORINE TABLETS - UNSTABILIZED

70% Tablets Chlorine (Calcium Hypochlorite) provides effective and reliable chlorination. It kills algae and bacteria instantly on contact. It can be used as routine daily maintenance or as a shock treatment.

Size	Item #	List
10 kg	HTH-TAB10	
25 kg	HTH-TAB25	



## STABILIZER (CYANURIC ACID)

Maximizes the available chlorine in pools and is designed to reduce chlorine loss from sunlight exposure.

Size	Item #	List
1.8 kg	HTH-STAB2KG	



## CHLORINE DURATION CAPSULES

A multi-purpose product that is easy and convenient to use. Controls algae, kills bacteria, and destroys organic contaminants. These 10.5 ounce capsules are designed to be used in the skimmer basket and dissolve slowly providing a steady source of available chlorine for complete enjoyment in your pool.

Size	Item #	List
10 kg	HTH-DUR10	
18 kg	HTH-DUR18	



## POOL SHOCK (65% CAL HYPO)

Chlorinating Granules for Shock Treatment

- Controls and destroys bacteria and algae in swimming pool water.
- Great for pool start up.

Size	Item #	List
2 kg	CA-7605	



## GRANULAR PH PLUS

To achieve maximum sanitizer efficiency and to avoid corrosion of surfaces, your water's pH should be between 7.2 and 7.8. Maintaining a balanced pH will insure better bather's comfort and protect pool equipment.

Size	Item #	List
7 kg	CA-7807	



## GRANULAR (STAB CHLOR)

Controls bacteria and algae in pool water. Protects chlorine residuals from destruction by the sun's rays for outdoor pools. It is a balanced pH sanitizer that will not affect pool water parameters.

- Makes pool water crystal clear.
- 100% water soluble.

Size	Item #	List
1.5 kg	CA-7108	
6 kg	CA-7106	



## META-SOL

Phosphate free and biodegradable formula designed to eliminate and prevent staining and scaling due to iron, copper and manganese from swimming pool water.

- Does not affect water pH.

Size	Item #	List
1 lt	CA-3308	
4 lt	CA-3304	



## SPA CLEAR (CLARIFIER)

Adds brilliance back to spa water.

- Aids filter in removing suspended particles.

Size	Item #	List
500 ml	CA-8330	



## SPA WHIRLPOOL RINSE

Spa, hot tub and whirlpool pipe cleaner

Size	Item #	List
500 ml	CA-9365	



## QUICK CLEAR CLARIFIER

- Restores water clarity & sparkle.
- Enhances filter performance.

Size	Item #	List
1 lt	CA-8335	
3.8 lt	CA-8334	



## BROMINE TABS

Bromine tablets is a safe and effective slow dissolving bactericide, algacide and disinfectant that, unlike other commonly used chemicals, performs well over a broad pH range.

- Controls bacteria and algae.
- No chlorine odor.

Size	Item #	List
1.5 kg	CA-9416	
4 kg	CA-8418	



## SPA-SHOCK

- Clarifier and accelerator for hot water treatment.
- Suitable for all spa surfaces.

Size	Item #	List
100 g	CA-9357	



## ULTRA-SPA

Softener and conditioner specially formulated for spas. Makes water feel silky soft and provides aromatherapy for bathing comfort. Optimizes sanitizer efficiency and protects surfaces from corrosion.

- Reduces skin irritations.

Size	Item #	List
800 g	CA-7727	



## ALKA-PLUS

To achieve maximum sanitizer efficiency and avoid pH variations, your total alkalinity should be balanced. Ensures better comfort and helps protect pool equipment.

- Controls pH fluctuation in pool waters.
- Provides reserves of alkalinity

Size	Item #	List
2 kg	CA-4123	
8 kg	CA-4124	



## BROMINATING GRANULES

Practical easy to use sanitizer for spa and hot tub water. It rapidly and completely dissolves to provide effective bromine sanitation without cloudy or insoluble residue in the water.

Size	Item #	List
2 kg	CA-9410	



## CAL-PLUS

Prevents corrosion of metal surfaces and erosion of pool surfaces. To achieve maximum balance water and to avoid erosion of surfaces. Ensures better comfort and protect your pool equipment.

Size	Item #	List
1.75 kg	CA-4804	
6 kg	CA-4809	



## GRANULAR PH MINUS

Maintaining a balanced pH will ensure better comfort and protect pool equipment.

Size	Item #	List
1.4 kg	CA-7903	



## CRYSTAL CUBES - CLARIFYER TABS

Amplifies filtration of micro size particles. Filters out unwanted inorganic/organic particles Great for pool start ups.

Size	Item #	List
140 gm	CA-8331	



## MINI-TABS

- 90% available chlorine content.
- Controls bacteria and algae.
- 100% water soluble.

Size	Item #	List
2 kg	CA-7405	
6 kg	CA-7406	



## PH UP

Raises the pH in spa Water

- Raises the pH in spa water.
- Will not harm spa equipment or surfaces.

Size	Item #	List
1 kg	CA-7802	



## DEFOAMER

A fast acting solution to eliminate foam in spa water. Compatible with all sanitizers. Allows you to use your spa or pool immediately.

Size	Item #	List
500 ml	CA-9600	
4 lt	CA-9604	





## POOL BOSS ALGAECIDES

Highly effective in controlling the growth of fungi, greenish free-floating varieties of algae, and the so-called black algae. Will not foam, react with chlorine or interfere with the efficient operation of sand, diatomaceous earth or cartridge filters. Effective at any pH level, reduces the chlorine demand of a pool and contains no metals which can stain pool walls.



Polymer Algaecide	Size	Item #	List
40%	4 L	CA-2160	
60%	4 L	CA-2162	

## POOL BLOCKS COPPER ALGAECIDE

This All Seasons Algicide is an extra strength, slow release solid tablet suitable for all chlorine and salt water pools. The active ionic copper is strongly chelated to ensure the longest possible treatment period and avoids reactions with other chemicals.



Size	Item #	List
.6 kg	CA-0011	
1.5 kg	CA-0005	

## TNL TILE & VINYL CLEANERS

This multi-purpose cleaner is ideal for removing grease and stubborn stains from pool liners, diving boards, patio furniture and most other vinyl, tile or chrome surfaces.



Size	Item #	List
4 L	CA-1833	
20 L	CA-1820	

## C-CLEAR

- C-Clear Liquid Floc is a water clarifier that is proven exceptional at removing suspended solids from pool water.
- Unlike alum, C-Clear functions over a wide pH range (4-9), and is effective in cold water to ease spring clean-up.
- C-Clear forms large dense particles that floc quickly to produce crystal-clear water.
- C-Clear will also remove metal stains from water.
- Use once a week before vacuuming.
- Regular use reduces demand for disinfecting chemicals.



Size	Item #	List
4 L	CA-3454	
20 L	CA-3420	

## SUPER-TABS STABILIZED CHLORINE

Super-Tabs are 3" diameter stabilized chlorinating tablets used in pools.

Easy to use Super-Tabs effectively controls bacteria that grow in pool water. Super-Tabs are 100% Trichloro-s-triazinetrione and 90% available chlorine and offer a continual slow release of disinfectant. Super-Tabs require the use of a floating dispenser. Stabilized chlorine Super-Tabs will lower pH and alkalinity levels.



Size	Item #	List
10 kg	CA-7720	
20 kg	CA-7225	



## CHLORINE NEUTRALIZER (SODIUM THIOSULPHATE)

If you are switching from chlorine to bromine or from bromine to a chlorine sanitation system you should always use X-It before doing so.

- PoolBoss X-It will remove chlorine and bromine residual in your hot tub or spa water
- If you have an excessive amount of chemical build-up X-It is the solution!



Size	Item #	List
2 kg	CA-6006	
7 kg	CA-6007	

## OXY OUT

Oxy-Out is a white, free-flowing peroxygen compound that provides effective, long-lasting oxidizing power for pool water. Oxy-Out is effective with both chlorine and bromine and provides an ideal alternative to super chlorination. Oxy-Out dissolves immediately, leaves no scale forming calcium to encrust heaters or pool walls and will not bleach the liner. Use every 10 to 14 days under normal conditions or after a rainstorm or heavy pool usage. Concentrate Oxy-Out in the deep end at a rate of 2 lbs. per 17,000 gallons of water.



Size	Item #	List
1 kg	CA-8002	
2.5 kg	CA-8000	
7 kg	CA-8023	
25 kg	CA-8026	



# BULK & SPECIALTY CHEMICALS

## 12% SODIUM HYPOCHLORITE

Size	Item #	List
20 L	CH-SODHYPO20	
Wrench for Cleartech Cont.	CH-WRENCH	
+ 20 L Container Deposit	10-CONTDEP	



## 31.5% HYDROCHLORIC ACID

Effectively reduce high pH and total alkalinity in spas and pools. Also used for cleaning the pool surface.

Size	Item #	List
4 L	CH-ACID4	
20 L	CH-ACID20	
+ 20 L Container Deposit	10-CONTDEP	
Wrench for Cleartech Container	CH-WRENCH	



## ACID MAGIC

**FRIENDLY ACID THAT WON'T BURN YOUR SKIN!**

- **Easier to Handle:** Eliminates the risk of burns to intact skin.
- **Environmentally Friendly:** Up to 90% less fumes.



Muriatic Acid Replacement (31.5% Hydrochloric)	Size	Item #	List
	4L	CH-ACIDMAGIC4	
	20 L Cont.	CH-ACIDMAGIC20	

## CHLORINE NEUTRALIZER (SODIUM THIOSULPHATE)

Will reduce or remove chlorine and bromine residual in your pool, hot tub or spa water.

Size	Item #	List
Flake 25 kg	CH-THIO25	
Puck 45 lb	CH-THIOPUCK45	



## POOL SALT (NO YPS)

Fast-dissolving, high purity salts like Pro's Pick® Professional Grade Pool Salt is recommended by manufacturers of salt water chlorinators for pools.

Size	Item #	List
Bag 20 kg	CH-POOLSALT	
<b>Bulk Price for 63 Bags (Pallet) Save 10%</b>	CH-POOLSALT	



## PH DOWN (SODIUM BISULPHATE)

Lowers pH level in swimming pool water.

Size	Item #	List
Bulk Bag 25 kg	CH-SODBISUL	



## PH UP (SODA ASH)

Increases the pH level in swimming pool water.

Size	Item #	List
Bulk Bag 22.7kg	CH-SODA25	



## ALKALINITY (SODIUM BICARBONATE)

A balancer that increases the alkalinity of pool water to prevent the pH level from fluctuating.

Size	Item #	List
Bulk Bag 22.7kg	CH-SODBI22	



## HARDNESS (CALCIUM CHLORIDE)

Increase water hardness to prevent foaming, equipment corrosion and scaling with Calcium Plus.

Size	Item #	List
Bulk Bag 25kg	CH-CAL25	



## FILTER MEDIA

Size	Item #	List
Std. Filter Sand 50 lb	PP-SAND20	
Diatomaceous Earth 22.7 kg	CH-DE22	



## CAUSTIC SODA

Size	Item #	List
Bag 22.7kg	CH-CAUSTIC25	



## FIX A LEAK

- Seals leaks in virtually any material.
- Forms a long-lasting seal.
- Will not harm Salt Chlorine Generators, Heaters, Pumps or Filters.

Usage	Item #	List
Liters/Gallons		
240ML-8oz	1,900L/500g	CH-FIX240
960ML-32oz	83,600L/22,000g	CH-FIX960



**BULK CHEMICALS (SEE DOSAGE CHARTS PAGE 179)**



# FILTER CARTRIDGES

Maintain sparkling clean and beautifully clear water with a replacement pool filter. Made with spun bonded, 100% polyester material, they are durable and effective in capturing the smallest of debris. With replacement cartridges available in a variety of sizes and built to OEM specifications, you're sure to get a reliable cartridge that fits your filter perfectly.

## 4CH-940 40 SQ FT CARTRIDGE

Length x Diameter	Item #	List
15" x 4-5/8"	UNI-4CH940	

## 4CH-949 50 SQ FT CARTRIDGE

Length x Diameter	Item #	List
13-1/2" x 4-15/16"	UNI-4CH949	

## C-4326 25 SQ FT CARTRIDGE

Length x Diameter	Item #	List
13-15/16" x 4-5/8"	UNI-C4326	40.36

## C-4335 35 SQ FT CARTRIDGE

Length x Diameter	Item #	List
9-1/4" x 4-15/16"	UNI-C4335	

## C-4950 50 SQ FT CARTRIDGE

Length x Diameter	Item #	List
13-5/8" x 4-15/16"	UNI-C4950	



## C-4975 75 SQ FT CARTRIDGE

Length x Diameter	Item #	List
20-1/8" x 4-15/16"	UNI-4CH940	

## C-4995 95 SQ FT CARTRIDGE

Length x Diameter	Item #	List
23-5/8" x 4-15/16"	UNI-4CH949	

## C-4607 5 SQ FT CARTRIDGE

Length x Diameter	Item #	List
8" x 4-1/4"	UNI-C4326	

## C-8326 125 SQ FT CARTRIDGE

Length x Diameter	Item #	List
19" x 8-7/16"	UNI-C4335	

## M-4306 2 X 25 SQ FT CARTRIDGES

Length x Diameter	Item #	List
6-5/8" x 4-15/16"	UNI-4CH949	







# VAN ISLE WATER

The Water System Experts  
Since 1972

**...but wait, there's more!**

## **Advantages of [vanislewater.com](http://vanislewater.com):**

- In-Depth Product Details and Specifications
- Download Your Receipts
- Print Your Invoices and Statements
- Look Up Full Transaction History
- Initiate Returns and Warranty Claims
- Pay Your Account Balance Online
- View All of Your Purchased Items
- Real Time Inventory Availability



461 Dupplin Rd, Victoria BC    1-888-444-8497 • 250-383-7145  
260B Tsolum Rd, Courtenay BC    1-800-665-8311 • 250-338-8737  
800-10281 Grace Rd, Surrey BC    1-888-444-8497 • 778-357-0257

