

Outdoor Heating



**WE WILL
INSTALL**



**SPECIAL
ORDERS**

HEATSTRIP[®]

Available at
BUNNINGS
warehouse

Take This Brochure to the Special Orders Desk or order online at [bunnings.com.au](https://www.bunnings.com.au)

HEATSTRIP®



HEATSTRIP AUSTRALIA WORLD CLASS PRODUCTS & QUALITY

Heatstrip (Thermofilm Australia Pty Ltd) has been manufacturing innovative, stylish and energy efficient products for more than 30 years. The full range of Heatstrip products is currently supplied to residential and commercial markets, both in Australia and around the world.

Heatstrip provides Award-winning outdoor heating solutions for some of Australia's best-known venues and residential homes across the country.

In 2014 Thermofilm was inducted into the Victorian Manufacturing Hall of Fame.

In 2017 HEATSTRIP Portable LPG heater TGH34PL won a Good Design Award in Consumer Products.

In 2018 CROSSRAY BBQ was also recognised with a Good Design Award in Australia.



2018 CROSSRAY BBQ



2017 HEATSTRIP LPG



2013 HEATSTRIP CLASSIC



4102 VICTORIAN
MANUFACTURING
HALL OF FAME

Thermofilm Australia Pty Ltd

PRODUCT SELECTOR

CLASSIC WITH REMOTE - PAGE 2

Application

- Pergola / Protected alfresco
- Difficult to heat indoor areas
- Cafe, garage/shed
- I/N 0261160, 0261161

Ideal Mounting Height 2.1-2.5m

Max Mounting Height 2.7m



RH180 - PAGE 2

Application

- Pergola / Protected alfresco
- Difficult to heat indoor areas
- Cafe, garage/shed
- I/N 3171295

Ideal Mounting Height 2.1-2.3m

Max Mounting Height 2.5m



ELEGANCE WITH REMOTE & APP - PAGE 3

Application

- Protected alfresco
- Difficult to heat indoor areas
- I/N 0261162, 0261163

Ideal Mounting Height 2.1-2.5m

Max Mounting Height 2.7m



INTENSE BLACK - PAGE 4

Application

- Under cover protected areas
- Semi-exposed outdoor locations
- I/N 0027423, 0098300

Ideal Mounting Height 2.1-2.5m

Max Mounting Height 2.8m



INTENSE OFF-WHITE - PAGE 5

Application

- Under cover protected areas
- Semi-exposed outdoor locations
- I/N 0098298, 0098299

Ideal Mounting Height 2.1-2.5m

Max Mounting Height 2.8m



MAX DC WITH REMOTE - PAGE 6

Application

- High ceilings
- Exposed alfresco
- Balconies
- I/N 0261165, 0261166

Ideal Mounting Height 2.2-2.8m

Max Mounting Height 3m



INTENSE PORTABLE - PAGE 7

Application

- Portable spot heating
- Dining / entertaining / Work stations
- Suitable for indoor and outdoor areas
- I/N 0027424

Indoor Heating Area 14m²

Outdoor Heating Area 5-9m²



PORTABLE LPG - PAGE 8

Application

- Portable spot heating
- Outdoor dining / kitchen
- Hospitality
- Patios / courtyards / balconies
- I/N 0098307

Heating Area 16m²



WALL MOUNTED LPG - PAGE 9

Application

- Alfresco areas / Hospitality
- Outdoor dining / kitchen
- Patios / courtyards / balconies
- I/N 0098308

Ideal Mounting Height 2-2.7m

Max Mounting Height 3.5m



WALL MOUNTED NATURAL GAS - PAGE 9

Application

- Alfresco areas / Hospitality
- Outdoor dining / kitchen
- Patios / courtyards / balconies
- I/N 3171571

Ideal Mounting Height 2-2.7m

Max Mounting Height 3.5m



HEATSTRIP[®] CLASSIC

WITH REMOTE

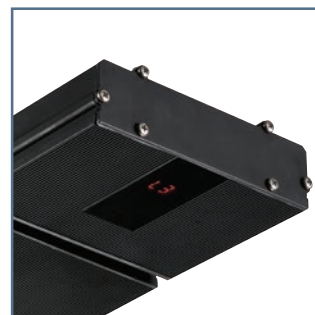


Classic slimline electric, all-black heating solution for your undercover, protected alfresco area, balcony, patio or verandah. Also suitable for indoor use.

- Indoor/outdoor electric radiant heater
- 2 Models available THH2400AR (2400W) (0261160) & THH3200AR (3200W) (0261161)
- New LED control panel with easy On/Off functionality, 3 heat levels and adjustable 0-24 hour timer
- Convenient DIY installation for the 2400W model. 3200W model must be hardwired.
- Corrosion-resistant for most environments
- Standard mounting bracket included can be used for Wall or ceiling mounted. Bracket can also be used to suspend the heater using chains or wires.
- Ideal mounting height 2.1-2.5m. Max mounting height 2.7m



Remote for easy power on/off & heat control.



New control panel with 3 temperature settings and 0-24 hour timer.

RH180 Exclusive to Bunnings



Model	Item Number	Running Costs	Power	Current	Dimensions	Weight	Lead Length	Plug	Heating Area	Standard Bracket	Flush Mount Kit	Extension Poles
RH180	3171295	45c / hr	1800 Watts	7.5 amps	1104x165x48mm	6 kg	1000 mm	Yes	3-4 m ²	3171584	3170740	0098309 (300mm)
THH2400AR	0261160	60c / hr	2400 Watts	10 amps	1371x165x48mm	7 kg	1000 mm	Yes	4-5 m ²	ZBRAK-113B	THHAC-013	0098310 (600mm)
THH3200AR*	0261161	80c / hr	3200 Watts	13.3 amps	1780x165x48mm	9 kg	1000 mm	No	5-6 m ²	ZBRAK-113B	THHAC-014	0098311 (900mm)
												0098312 (1200mm)

Materials of Construction: High temperature all-black ceramic coated extruded alloy. IP55 Rated..

***This unit must be installed by a licensed electrician**



HEATSTRIP[®] ELEGANCE

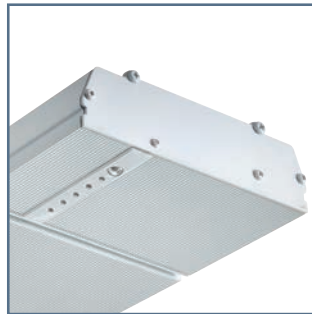
WITH REMOTE & APP

Sleek, off-white electric heating solution for your undercover, protected alfresco area, balcony, patio or verandah. Also suitable for indoor uses.

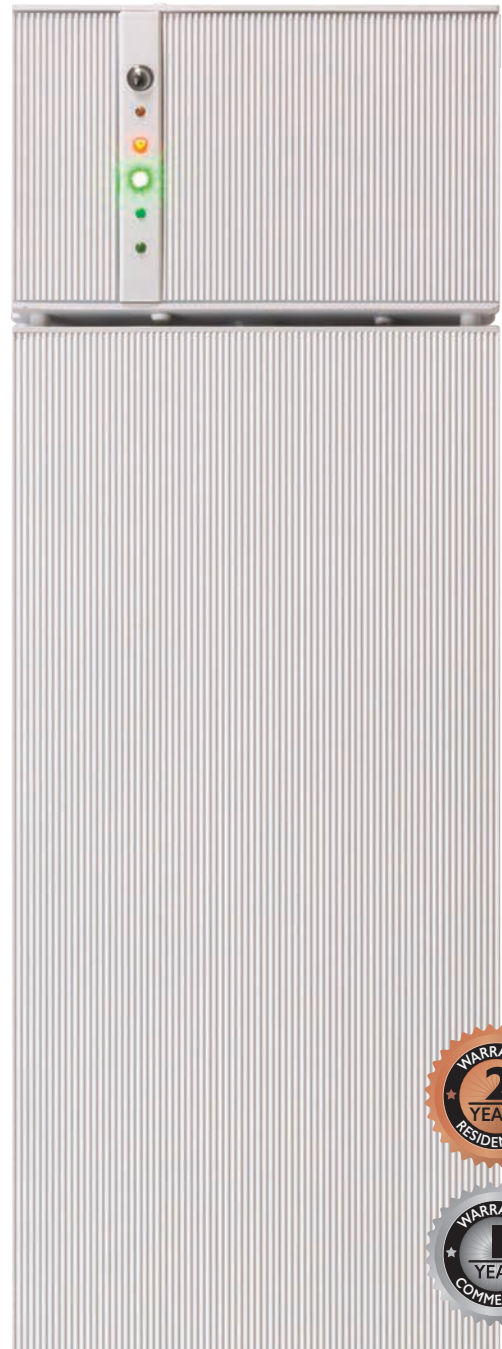
- Indoor/outdoor electric radiant heater
- 2 Models available: THE2400RA (2400W) (0261162) & THE3200RA (3200W) (0261163)
- Remote, APP plus smart home connectivity. Compatible with Google and Amazon smart home platforms. Bluetooth & WIFI.
- Convenient DIY installation for the 2400W model. 3200W model must be hardwired.
- Standard mounting bracket included can be used for Wall or ceiling mounted. Bracket can also be used to suspend the heater using chains or wires.
- Ideal mounting height 2.1-2.5m. Max mounting height 2.7m



Remote or app for convenient control.



Control Panel with On/Off functionality, High/Low temperature settings, 1/2/4 hour timer.



Model	Item Number	Running Costs	Power	Current	Dimensions	Weight kg	Lead Length	Plug	Heating Area	Standard Bracket	Flush Mount Kit	Extension Poles
THE2400RA	0261162	60c / hr	2400 Watts	10 amps	1306x170x42.7mm	7 kg	1000 mm	Yes	4-5 m ²	3171585	0177027	3171579 (300mm) 3171580 (600mm)
THE3200RA*	0261163	80c / hr	3200 Watts	13.3 amps	1710x170x42.7 mm	9 kg	1000 mm	No	5-6 m ²	3171585	0177028	3171582 (900mm) 3171583 (1200mm)

Materials of Construction: High temperature off-white ceramic coated extruded alloy. IP55 Rated.

*This unit must be installed by a licensed electrician

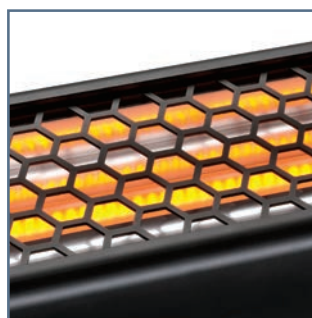
HEATSTRIP® INTENSE

INFRARED HEAT



High output, instant heat. Ideal for undercover and semi exposed outdoor areas or indoor use.

- Electric Infrared instant high temperature Heater
- 2 Models available: THY2200 (0027423) THY3200 (0098300)
- Convenient DIY installation for the 2200W model. 3200W model must be hardwired.
- All black construction, corrosion protection for most environments.
- Standard mounting bracket included can be used for Wall or ceiling mounted. Bracket can also be used to suspend the heater using chains or wires.
- Ideal mounting height 2.1-2.5m. Max mounting height 2.8m



High performance infra-red electric heater. That provides instantaneous heat.



Optional accessories available (see below for part number)

Intense Optional Controllers

**HARDWIRED (TT-MTM)
I/N 3170737**

Wall Mounted
Controller &
Remote Control.



**DIY (TT-MTR-PLUG)
I/N 3171309**

Timer switch remote
control of plug-in
heaters. Max 10amps



Model	Item Number	Running Costs	Power	Current	Dimensions	Weight kg	Lead Length	Plug	Heating Area	Standard Bracket	Flush Mount Kit	Extension Poles
THY2200	0027423	55c / hr	2200 Watts	9.2 amps	1068x120x90mm	6 kg	1000 mm	Yes	5-9 m ²	0098313	0098301	0098309 (300mm) 0098310 (600mm)
THY3200*	0098300	80c / hr	3200 Watts	13.3 amps	1270x120x90mm	7 kg	1000 mm	No	8-13 m ²	0098313	0177023	0098311 (900mm) 0098312 (1200mm)

Materials of Construction: Black anodized alloy casing and end caps. Powder coated grille. IPX5 Rated

***This unit must be installed by a licensed electrician**



HEATSTRIP[®] INTENSE

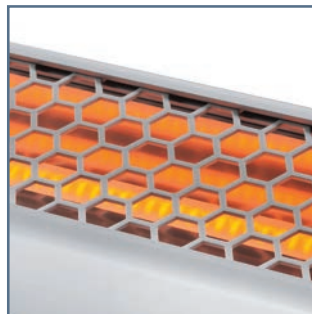
OFF WHITE

High output, instant heat. Ideal for undercover and semi exposed outdoor areas or indoor use.

- Electric Infrared instant high temperature Heater
- 2 Models available: THY2200W (2200W) (0098298) THY3200W (3200W) (0098299)
- Convenient DIY installation for the 2200W model. 3200W model must be hardwired.
- All Off-white construction with hexagonal grill is corrosion protected for most environments.
- Standard mounting bracket included for wall or ceiling mounting. Bracket can be used to suspend the heater using chains or wires.
- Ideal mounting height 2.1-2.5m. Max mounting height 2.8m



Corrosion resistant "off-white" slimline heater.



Carbon filament electric infra-red element, providing instant heat.

Intense Optional Controllers

**HARDWIRED (TT-MTM)
I/N 3170737**

Wall Mounted
Controller &
Remote Control.



**DIY (TT-MTR-PLUG)
I/N 3171309**

Timer switch remote
control of plug-in
heaters. Max 10amps



Model	Item Number	Running Costs	Power	Current	Dimensions	Weight kg	Lead Length	Plug	Heating Area	Standard Bracket	Flush Mount Kit	Extension Poles
THY2200W	0098298	55c / hr	2200 Watts	9.2 amps	1068x120x90mm	6 kg	1000 mm	Yes	5-9 m ²	ZBRAK-132W	0177024	3171579 (300mm) 3171580 (600mm)
THY3200W*	0098299	80c / hr	3200 Watts	13.3 amps	1270x120x90mm	7 kg	1000 mm	No	8-13 m ²	ZBRAK-132W	0177025	3171582 (900mm) 3171583 (1200mm)

Materials of Construction: High temperature off-white ceramic coated extruded alloy. IP55 Rated..

***This unit must be installed by a licensed electrician**

HEATSTRIP[®] MAX DC

WITH REMOTE

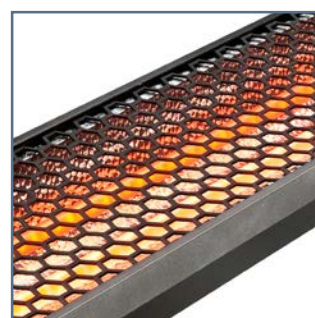


Max heat, max style with this heating solution for exposed and hard to heat areas such as balconies, pergolas, warehouses and restaurants.

- Electric Infrared Heater
- 2 Models available THX2400DCR (2400W) (0261165) & THX3600DCR (3600W) (0261166)
- Dual Carbon element provides instant heat
- The Remote and control panel provides 3 heat levels with adjustable timer options from 0-24 hours with the touch of a button
- Convenient DIY installation for the 2200W model. 3200W model must be hardwired.
- Ideal mounting height 2.2-2.8m. Max mounting height 3m



Easy installation with brackets included. Suitable for ceiling or wall mounting.



Commercial quality with a stylish hexagonal grille and black finish.

Model	Item Number	Running Costs	Power	Current	Dimensions	Weight kg	Lead Length	Plug	Heating Area	Mounting Bracket	Flush Mount Kit	Extension Poles
THX2400DCR	0261165	60c / hr	2400 Watts	10 amps	979x170 x80mm	6 kg	1000 mm	Yes	7-12 m ²	0098313	THXAC-034	0098309 (300mm) 0098310 (600mm)
THX3600DCR	0261166	90c / hr	3600 Watts	15 amps	1190x170x80mm	8 kg	1000 mm	No*	11-18 m ²	0098313	THXAC-035	0098311 (900mm) 0098312 (1200mm)

Materials of Construction: Anodised alloy casing and end caps, with a powder coated grill (Black) IPX5

***This unit must be installed by a licensed electrician**

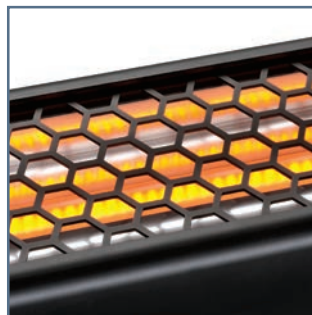


An attractive portable outdoor heating solution, providing high output, instant heat. Suitable for spot heating tables, lounges, entertaining areas and work stations.

- Electric Infrared Portable Heater
- THY2200P (2200W) (0027424).
- With high quality, robust, all black construction, components are sub-assembled for easy final DIY installation.
- An optional controller is available for easy DIY functions with LED indicators, 1/2/4 hour timer and remote control On/Off (TT-MTR-PLUG I/N:3171309).
- In-built wheels for easy portability and storage
- 2-year residential and 1-year commercial warranty



Ideal for indoor and outdoor use. In-built wheels for easy portability and storage.



Includes a high-performance carbon filament electric infra-red element, providing instant heat.

HEATSTRIP[®]

INTENSE

ELECTRIC PORTABLE



Model	Item Number	Running Costs	Power	Current	Dimensions	Weight kg	Lead Length	Plug	Heating Area	Optional Controller
THY2200P	0027424	55c / hr	2200 Watts	9.2 amps	1068x2050x500mm	20 kg	3000 mm	Yes	5-9 m ²	3171309

Materials of Construction: Black anodised alloy casing & end caps, powder coated grille. Stand: Black Powder coated mild steel IPX5 Rated

HEATSTRIP®

PORTABLE LPG



Portable, high output, LPG gas heater. Ideal for undercover and semi exposed outdoor areas. Commercial grade construction and heat output.

- Portable LPG heater
- TGH34PL-2 (34MJ, 4 tile) (0098307)
- Suitable for alfresco outdoor dining areas, patios, outdoor dining areas, patios, outdoor kitchens, courtyards, verandas and hospitality
- Fully concealed gas pipes and bottle. In-built wheels for easy portability and storage
- Optional heater cover also available for your heater



34MJ, 4 tile commercial grade ceramic burner; with market leading wind protection rating of 16km/hr



Electronic, battery-operated finger pull On/Off controls, makes operation so easy and effortless.

Model	Item Number	Running Costs	Tiles	MJ	Dimensions	Weight kg	Ignition	Heating Area	Heat Shield	Cover	Gas Type
TGH34PL-2	0098307	\$2.00 / hr	4	34	650x670x2118mm	31.5 kg	Electronic	16 m ²	0098304	3171575	LPG

Materials of Construction: Head- Stainless steel (430ss) with high temperature paint coating. Stand: E-coated mild steel with powder coated finish.



HEATSTRIP®

WALL MOUNTED

The new and upgraded HEATSTRIP® Wall Mounted Gas heaters are a stylish addition to any outdoor area.

- Natural Gas Wall Mounted Heater
- TGH34WN-2 (3171571) (Natural Gas model, 34MJ)
- TGH34WL-2 (0098308) (LPG Model, 34MJ)
- Suitable for alfresco outdoor dining areas, patios, courtyards and verandas.
- World-class wind protection rating at 16 kilometres an hour
- Protective grille and reflector included as standard, to guarantee safe operation.
- Wall mounting bracket allows for multiple mounting angles.



Electronic, battery-operated finger pull On/Off controls, makes operation so easy and effortless.



Heater built from stainless steel with high temperature paint coating.



The standard heat reflector ensures only 500mm overhead clearance is required. The optional HeatShield (TGHAC-003) 0098304 reduces this to 300mm clearance.



34MJ, 4 tile commercial grade ceramic burner, with market leading wind protection rating of 16km/hr

Model	Item Number	Running Costs	Tiles	MJ	Dimensions	Weight kg	Ignition	Heating Area	Heat Shield	Extension Pole	Gas Type
TGH34WN-2	3171571	\$68c / hr	4	34	650x190x380mm	11.5 kg	Electronic	11.5 m ²	0098304	0098305	NG
TGH34WL-2*	0098308	\$2.00 / hr	4	34	650x190x380mm	11.5 kg	Electronic	11.5 m ²	0098304	0098305	LPG

Materials of Construction: Head- Stainless steel (430ss) with high temperature paint coating.

***For direct connection to an LPG bottle. For reticulated LPG connection, please contact Heatstrip.**

How It Works

It's as simple as 1,2,3! Follow the steps shown to purchase or order your product. If you need further advice, speak to a team member at the Special Orders Desk in-store.

1. Select The Product You Want

View the extensive range available in this brochure or online. Use the number shown below to order your product online or in-store.

Classic with Remote

- THH2400AR **I/N: 0261160**
- THH3200AR **I/N: 0261161**
- RH180 **I/N: 3171295**

Elegance with Remote & App

- THE2400RA **I/N: 0261162**
- THE3200RA **I/N: 0261163**

Intense

- THY2200 **I/N: 0027423**
- THY3200 **I/N: 0098300**

Intense off white

- THY2200W **I/N: 0098298**
- THY3200W **I/N: 0098299**

Intense Controllers

- TT-MTR-PLUG **I/N 3171309**
- TT-MTM **I/N 3170737**

Max DC with Remote

- THX2400DCR **I/N: 0261165**
- THX3600DCR **I/N: 0261166**

Intense Portable THY2200P **I/N: 0027424**

Portable LPG TGH34PL-2 **I/N: 0098307**

Wall mounted Gas Heaters

- TGH34WN-2 **I/N: 3171571**
- TGH34WL-2 **I/N: 0098308**

2. Order Online or at the Special Orders Desk

After you have selected the product you want, take this brochure to the Special Orders Desk or order online at bunnings.com.au

3. Get It Home

We Will Deliver

Delivery to your home or site can be arranged online or in-store when purchasing your products.

Pick-Up In-Store

If you decide to pick-up in-store and need help to get it home, you can:

- borrow a courtesy trailer
- hire a vehicle

Check with your local Bunnings store for availability.

HEATSTRIP[®]



9 334038 002899

V 01/22