



# Product End-of-Life Disassembly Instructions

**Product Category:** Notebooks and Tablet PCs

**Marketing Name / Model**

[List multiple models if applicable.]

HP Elite x2 1013 G3 Tablet PC

**Purpose:** The document is intended for use by end-of-life recyclers or treatment facilities. It provides the basic instructions for the disassembly of HP products to remove components and materials requiring selective treatment, as defined by EU directive 2002/96/EC, Waste Electrical and Electronic Equipment (WEEE).

## 1.0 Items Requiring Selective Treatment

1.1 Items listed below are classified as requiring selective treatment.

1.2 Enter the quantity of items contained within the product which require selective treatment in the right column, as applicable.

Item Description	Notes	Quantity of items included in product
Printed Circuit Boards (PCB) or Printed Circuit Assemblies (PCA)	With a surface greater than 10 sq cm MB	1
Batteries	All types including standard alkaline and lithium coin or button style batteries Main Battery	1
Mercury-containing components	For example, mercury in lamps, display backlights, scanner lamps, switches, batteries	
Liquid Crystal Displays (LCD) with a surface greater than 100 sq cm	Includes background illuminated displays with gas discharge lamps Touch Panel	1
Cathode Ray Tubes (CRT)		
Capacitors / condensers (Containing PCB/PCT)		
Electrolytic Capacitors / Condensers measuring greater than 2.5 cm in diameter or height		
External electrical cables and cords	Power Cord	1
Gas Discharge Lamps		
Plastics containing Brominated Flame Retardants weighing > 25 grams (not including PCBs or PCAs already listed as a separate item above)		
Components and parts containing toner and ink, including liquids, semi-liquids (gel/paste) and toner	Include the cartridges, print heads, tubes, vent chambers, and service stations.	
Components and waste containing asbestos		
Components, parts and materials containing refractory ceramic fibers		

Components, parts and materials containing radioactive substances		
---	--	--

## 2.0 Tools Required

List the type and size of the tools that would typically be used to disassemble the product to a point where components and materials requiring selective treatment can be removed.

Tool Description	Tool Size (if applicable)
Description #1 Screw Driver	#0
Description #2 Screw Driver	T5
Description #3	
Description #4	
Description #5	

## 3.0 Product Disassembly Process

3.1 List the basic steps that should typically be followed to remove components and materials requiring selective treatment:

1. Remove LCD sub assymble
2. Remove Battery / SSD / Hall Sensor
3. Remove Pogo FPC
4. Disassembly Thermal Module / Thermal Plate
5. Remove Front Camera/Real Camera / IR Camera
6. Disassembly WWAN Module
7. Remove SPK
8. Disassembly WWAN/WLAN Ant. holder
9. Disassembly Front camera holder / IR Camera hodler
10. Remove ALS FPC
11. Disassembly M/B
12. Disassembly Fan X2
13. Disassembly Vol FPC/Pw FPC/ FPR FPC
14. Disassembly Kickstand / Hinge

3.2 Optional Graphic. If the disassembly process is complex, insert a graphic illustration below to identify the items contained in the product that require selective treatment (with descriptions and arrows identifying locations).

### 3.2-1 Total part disassembly / Remove LCD sub assembly



### 3.2-2 Remove Battery / SSD / Hall Sensor



### 3.2-3 Remove Pogo FPC



### 3.2-4 Disassembly Thermal Module / Thermal Plate



### 3.2-5 Remove Front Camera/Real Camera / IR Camera



### 3.2-6 Disassembly WWAN Module



### 3.2-7 Remove SPK

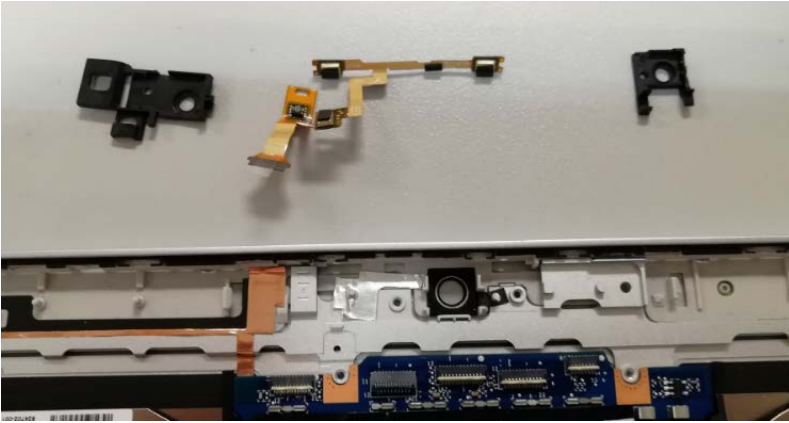


### 3.2-8 Disassembly WWAN/WLAN Ant. Holder

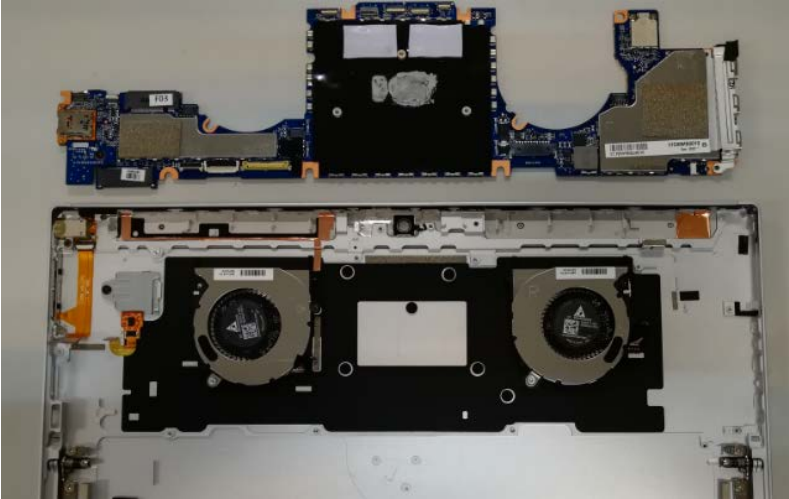


### 3.2-9 Disassembly WWAN/WLAN Ant. Holder

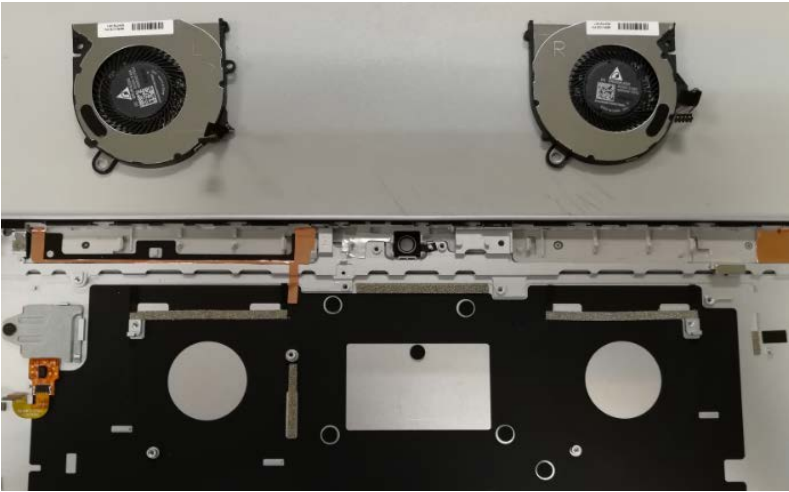
### 3.2-10 Remove ALS FPC



3.2-11 Disassembly M/B

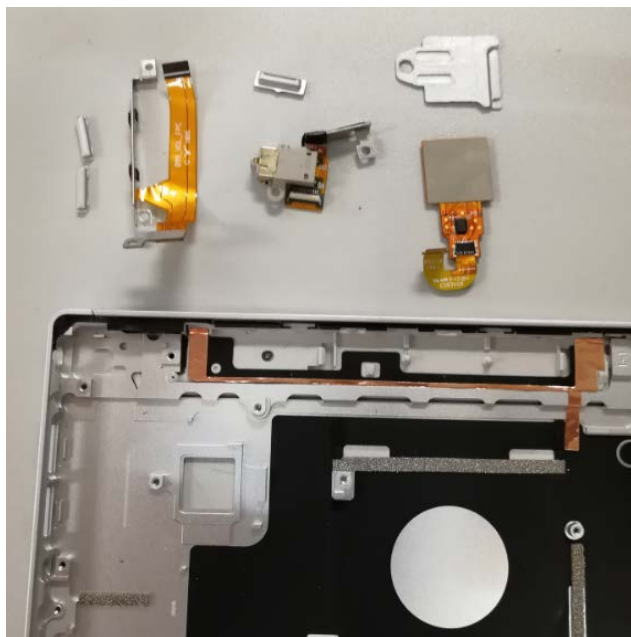


3.2-12 Disassembly Fan X2



3.2-13 Disassembly Vol FPC/Pw FPC/ FPR FPC





3.2-14 Disassembly Kickstand / Hinge

