



F E E L T H E V I B E W I T H J B L

CAR AUDIO 2015/2016





SOUND THAT
AMPLIFIES LIFE ►

MAKING
EVERY JOURNEY
MEMORABLE ►

WHY UPGRADE
TO JBL ►

The world's finest recording studios, cinema halls and concert venues have always preferred the world's finest audio equipment – JBL. We have distilled years of our superior audio expertise to create for you an unparalleled on-road listening experience. You could opt to simply replace your current car speakers with JBL or you could build a world-class sound system in your car from scratch using JBL components. Either way, the quality of sound, and hence your ride, will improve dramatically.

We spend, on an average, 1 ½ hours in the car every single day. JBL believes that those hours of journey should be uplifting, as opposed to dull and boring. Drawing on our rich audio experience we have designed audio systems for your car that will make you look forward to the journey as much as to the destination. To up your car audio a notch or two, JBL speakers feature increased clarity and musical accuracy. The amplifiers provide headroom and higher system output, while the subwoofers deliver deep bass response. All this makes the JBL Car Audio system accelerate far ahead of competition.

From years of developing professional equipment, and working with car manufacturers, we have mastered the art of great sound. And we bring that same level of audio perfection to car speakers for better depth, clarity, and power. Easily-installed, they are sure to enhance the sound of any car's audio system.



CAR SPEAKERS JBL

From years of developing professional equipment, and working with car manufacturers, we have mastered the art of great sound. And we bring that same level of audio perfection to car speakers for better depth, clarity, and power. Our car audio systems feature best-in-class technologies that deliver performance you can hear and appreciate. Easily-installed, they are sure to enhance the sound of any car's audio system.



CS SERIES

JBL CS7 Series speakers are the no-brainer upgrade for those who want to rock their ride. They're easy to install, feature external crossover housing, fit practically any stock size and can be driven by any factory head unit. And with Plus One woofer cones, they give you the power of a home audio system even on the road.



► **CS742**
100mm (4") 2-way

- Peak power handling: 90W
- RMS power handling: 30W
- Frequency response: 75Hz – 20kHz
- Nominal impedance: 4 ohms
- Sensitivity (2.83V/m): 90dB



► **CS752**
130mm (5-1/4") 2-way

- Peak power handling: 105W
- RMS power handling: 35W
- Frequency response: 70Hz – 20kHz
- Nominal impedance: 4 ohms
- Sensitivity (2.83V/m): 93dB



► **CS762**
165mm (6-1/2") 2-way

- Peak power handling: 135W
- RMS power handling: 45W
- Frequency response: 55Hz – 20kHz
- Nominal impedance: 4 ohms
- Sensitivity (2.83V/m): 93dB



► **CS760C**
165mm (6-1/2") Component

- Peak power handling: 150W
- RMS power handling: 50W
- Frequency response: 55Hz – 20kHz
- Nominal impedance: 4 ohms
- Sensitivity (2.83V/m): 92dB



► **CS769**
152mm x 228mm (6" x 9") 3-way

- Power handling: 210W peak
- RMS power handling: 70W
- Frequency response: 40Hz – 21kHz
- Nominal impedance: 4 ohms
- Sensitivity (2.83V/m): 94dB



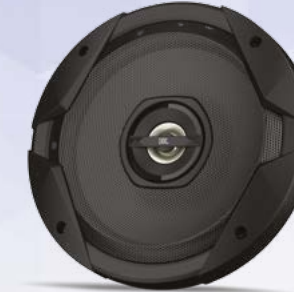
GT SERIES

JBL GT7 Series car speakers are the optimal choice for audiophiles looking to upgrade their car audio at an affordable price. These individually voiced speakers feature Plus One woofer cones for higher sensitivity, increased low-frequency output, and greater musical character. They also allow you to adjust the sound to suit your listening tastes with the help of a tweeter level controller. What's more, they deliver full-range sound with a frequency response of up to 21kHz.



► **GT7-4**
100mm (4") 2-way

- Peak power handling: 90W
- RMS power handling: 30W
- Frequency response: 75Hz – 20kHz
- Nominal impedance: 4 ohms
- Sensitivity (2.83V/m): 90dB



► **GT7-5**
130mm (5-1/4") Component

- Power handling: 105W peak
- RMS power handling: 35W
- Frequency response: 70Hz – 20kHz
- Nominal impedance: 4 ohms
- Sensitivity (2.83V/m): 93dB



► **GT7-5C**
130mm (5-1/4") Component

- Power handling: 135W peak
- RMS power handling: 45W
- Frequency response: 65Hz – 20kHz
- Nominal impedance: 4 ohms
- Sensitivity (2.83V/m): 92dB



► **GT7-6**
165mm (6-1/2") 2-way

- Power handling: 135W peak
- RMS power handling: 45W
- Frequency response: 55Hz – 20kHz
- Nominal impedance: 4 ohms
- Sensitivity (2.83V/m): 93dB



► **GT7-6C**
165mm (6-1/2") Component

- Peak power handling: 150W
- RMS power handling: 50W
- Frequency response: 50Hz – 20kHz
- Nominal impedance: 4 ohms
- Sensitivity (2.83V/m): 92dB



► **GT7-96**
152mm x 228mm (6" x 9") 3-way

- Peak power handling: 210W
- RMS power handling: 70W
- Frequency response: 40Hz – 21kHz
- Nominal impedance: 4 ohms
- Sensitivity (2.83V/m): 94dB



► **GT7-86**
130mm x 178mm (5" x 7") / 150mm x 200mm (6" x 8") 2-way

- Peak power handling: 180W
- RMS power handling: 60W
- Frequency response: 45Hz – 20kHz
- Nominal impedance: 4 ohms
- Sensitivity (2.83V/m): 93dB



GX SERIES

JBL GX Series car speakers are designed to enhance the oomph factor of your car audio. They come with the HARMAN-proprietary tweeter deflector that allows for an angled, rotating speaker which enables sound to travel throughout the car. From ogle-worthy design to a superior high-frequency response, the JBL GX Series has enough features to please even the most discerning audio junkies.



▶ **GX302**
87mm (3-1/2") 2-way

- Peak power handling: 75W
- RMS power handling: 25W
- Frequency response: 90Hz – 21kHz
- Nominal impedance: 2.3 ohms
- Sensitivity (2.83V/m): 89dB



▶ **GX402**
100mm (4") 2-way

- Peak power handling: 105W
- RMS power handling: 35W
- Frequency response: 75Hz – 21kHz
- Nominal impedance: 2.3 ohms
- Sensitivity (2.83V/m): 90dB



▶ **GX502**
130mm (5-1/4") 2-way

- Peak power handling: 135W
- RMS power handling: 45W
- Frequency response: 65Hz – 21kHz
- Nominal impedance: 2.3 ohms
- Sensitivity (2.83V/m): 91dB



▶ **GX602**
165mm (6-1/2") 2-way

- Power handling: 180W peak
- RMS power handling: 60W
- Frequency response: 50Hz – 21kHz
- Nominal impedance: 2.3 ohms
- Sensitivity (2.83V/m): 92dB



▶ **GX600C**
165mm (6-1/2") Component

- Peak power handling: 210W
- RMS power handling: 70W
- Frequency response: 50Hz – 21kHz
- Nominal impedance: 2.3 ohms
- Sensitivity (2.83V/m): 92dB



▶ **GX963**
152mm x 228mm (6" x 9") 3-way

- Peak power handling: 210W
- RMS power handling: 100W
- Frequency response: 45Hz – 21kHz
- Nominal impedance: 2.3 ohms
- Sensitivity (2.83V/m): 94dB



▶ **GX642**
100mm x 150mm (4" x 6") 2-way

- Peak power handling: 120W
- RMS power handling: 40W
- Frequency response: 75Hz – 21kHz
- Nominal impedance: 2.3 ohms
- Sensitivity (2.83V/m): 91dB



▶ **GX862**
130mm x 178mm (5" x 7") /
150mm x 200mm (6" x 8") 2-way

- Peak power handling: 180W
- RMS power handling: 60W
- Frequency response: 50Hz – 21kHz
- Nominal impedance: 2.3 ohms
- Sensitivity (2.83V/m): 92dB



GTO SERIES

JBL GTO Series high-fidelity automotive speakers feature innovative technology engineered for the environment and conditions in today's cars. Using the patented Plus One® woofer cone technology and rugged construction materials like reinforced ABS composite frames and butyl rubber surrounds, GTO Series automotive speakers are the ideal upgrade to any car's audio system. The most popular factory replacement and aftermarket sizes are covered including separate components with woofer, tweeter and passive crossovers. Easily installed and built to last, JBL GTO Series speakers bring music to life in your car.



► **GTO 19T**
19mm (3/4") Tweeter

- Peak power handling: 135W
- RMS power handling: 45W RMS
- Frequency response: 2.5kHz – 21kHz
- Nominal impedance: 3 ohms
- Sensitivity (2.83V/m): 93dB



► **GTO 329**
87mm (3-1/2") 2-way

- Peak power handling: 75W
- RMS power handling: 25W RMS
- Frequency response: 85Hz – 21kHz
- Nominal impedance: 3 ohms
- Sensitivity (2.83V/m): 91dB



► **GTO 429**
100mm (4") 2-way

- Peak power handling: 105W
- RMS power handling: 35W RMS
- Frequency response: 75Hz – 21kHz
- Nominal impedance: 3 ohms
- Sensitivity (2.83V/m): 92dB



► **GTO 529**
130mm (5-1/4") 2-way

- Peak power handling: 135W
- RMS power handling: 45W RMS
- Frequency response: 67Hz – 21kHz
- Nominal impedance: 3 ohms
- Sensitivity (2.83V/m): 92dB



► **GTO 509C**
130mm (5-1/4") 2-way

- Peak power handling: 225W
- RMS power handling: 75W RMS
- Frequency response: 67Hz – 21kHz
- Nominal impedance: 3 ohms
- Sensitivity (2.83V/m): 92dB



► **GTO 629**
165mm (6-1/2") 2-way

- Peak power handling: 180W
- RMS power handling: 60W RMS
- Frequency response: 53Hz – 21kHz
- Nominal impedance: 3 ohms
- Sensitivity (2.83V/m): 93dB



► **GTO 609C**
165mm (6-1/2") 2-way

- Peak power handling: 270W
- RMS power handling: 90W RMS
- Frequency response: 53Hz – 21kHz
- Nominal impedance: 3 ohms
- Sensitivity (2.83V/m): 92dB



► **GTO 6429**
100mm x 150mm (4" x 6") 2-way

- Peak power handling: 135W
- RMS power handling: 45W RMS
- Frequency response: 75Hz – 21kHz
- Nominal impedance: 3 ohms
- Sensitivity (2.83V/m): 92dB



► **GTO 939**
152mm x 228mm (6" x 9") 3-way

- Peak power handling: 300W
- RMS power handling: 100W RMS
- Frequency response: 46Hz – 21kHz
- Nominal impedance: 3 ohms
- Sensitivity (2.83V/m): 94dB



JBL CAR SUBWOOFERS ▶

Our rich experience in developing live stage equipment has helped us in designing subwoofers that are known for their incredible high endurance and reliability. Whether it's a polypropylene woofer cone to ensure maximum efficiency and performance or a progressive spider cone to provide exceptional control and reduce distortion at the highest output levels, JBL subwoofers outperform anything that you may have heard before.



CS AND BASSPRO SUBWOOFERS

Enjoy legendary JBL sound in your car with CS subwoofers. They deliver deep and powerful bass at an entry-level price. What's more, they are compatible with seated, vented and band-pass boxes. Their superior performance, reliability and versatility make them a must-have for your car.

The easy-to-install JBL Basspro subwoofers pump out bass powerful enough to rock your ride. Their patented Slipstream design is optimized for the woofer, amp and enclosure, a feature that is unique to Basspro subwoofers.



► **CS-1204B**
12" (300mm) Closed subwoofer enclosure

- Peak power handling: 1000W
- RMS power handling: 250W
- Frequency response: 23Hz – 450Hz
- Nominal Impedance: 4 Ohms
- Sensitivity (2.83V/m): 93dB



► **CSX-1400BP**
12" (300mm) Bandpass subwoofer enclosure

- RMS Power Handling: 350Watt
- Peak Power Handling: 1400Watt
- Frequency response 45Hz – 130Hz
- Nominal Impedance 4 ohms
- Sensitivity (@ 2.83V): 93dB



► **CS1214**
12" (300mm) Subwoofer

- RMS Power Handling: 250Watt
- Peak Power Handling: 1000Watt
- Frequency response: 35Hz – 200Hz
- Nominal Impedance: 4 Ohms
- Sensitivity (2.83V/m): 90 dB



► **GT-BASSPRO12**
Type 12" Cone ported amplified subwoofer

- RMS Power Handling 150Watt
- Frequency response 35Hz–120Hz
- Crossover Frequency/Stope 70Hz–120Hz
- Crossover Slope 12dB/octave



► **CS1214T**
12" (300mm) Tube subwoofer enclosure

- RMS Power Handling: 250Watt
- Peak Power Handling: 1000Watt
- Frequency response: 35Hz – 200Hz
- Nominal Impedance: 4 Ohms
- Sensitivity (2.83V/m): 90 dB



Coming soon

► **BASSPRO SL**
8" Cone powered, Underseat woofer enclosure

- RMS Power Handling 125Watt
- Frequency response 35Hz–120Hz
- Crossover Frequency/Stope 50Hz – 120Hz
- Crossover Slope 12dB/octave



SERIES II

Series II subwoofers provide thumping bass without making you pay through the nose. In addition to being affordably priced, they feature the exclusive SSI technology that allows for simple system building. They also use progressive spiders for the best possible control and feature polypropylene woofer cones to keep distortion low, while keeping the output deep.



▶ **S2-1024**
10" (250mm) Subwoofer

- Peak power handling: 100Watt
- RMS power handling: 250Watt
- Frequency response 30Hz – 175Hz
- Nominal Impedance 2 or 4 ohms, switch-selectable
- Sensitivity (@ 2.83V): 92dB



▶ **S2-1224**
12" (300mm) Subwoofer

- Peak power handling: 1100Watt
- RMS power handling: 275Watt
- Frequency response 25Hz – 175Hz
- Nominal Impedance 2 or 4 ohms, switch-selectable
- Sensitivity (@ 2.83V): 93dB



▶ **S2-1224SS**
12" (300mm) Slipstream ported enclosure

- Peak power handling: 1100Watt
- RMS power handling: 275Watt
- Frequency response 25Hz – 175Hz
- Nominal Impedance 2 or 4 ohms, switch-selectable
- Sensitivity (@ 2.83V): 93dB



JBL CAR AMPLIFIERS ▶

With almost seven decades of experience in bringing live music to life, JBL has adapted many professional technologies for use in our car amplifiers. They provide unmatched ease of installation, configuration and calibration for clean powerful sound.



GX AND GTR AMPLIFIERS

JBL GX amplifiers will transform your on-road listening experience with new levels of power and clarity. On board active crossovers and separate line and speaker-level inputs make it easy to integrate the new GX amps into the rest of your system. Carefully engineered Bass Boost circuits deliver the power you crave, whether you're upgrading a factory system or building one from scratch.

The Bluetooth-enabled GTR amplifiers offer besides the legendary JBL sound, full handsfree calling & music streaming capability They use HARMAN's exclusive Clari-fi sound restoration technology to improve the playback of compressed digital music from your smartphone. In addition, they feature a Party Mode that allows up to three passengers to share their playlists by connecting to the system wirelessly.



▶ GX-A3001 Mono Subwoofer Amplifier

- Number of Channels: Mono / subwoofer
- 4-Ohm Power Output: 200W rms x 1, <1% THD+N
- Total Peak Power Output: 415W
- Frequency Response: 10Hz – 320Hz (-3dB)

▶ GTR-601 Mono Subwoofer Amplifier

- Number of Channels: 2 channels
- 4-Ohm Power Output: 400Wrms x 1, <0.1% THD+N
- Total Peak Power Output: 1500Watt



▶ GX-A602 2-channel Full-Range Amplifier

- Number of Channels: 2 channels
- 4-Ohm Power Output: 60W rms x 2, <1% THD+N
- Total Peak Power Output: 280W
- Frequency Response: 20 – 200kHz (-3dB)

▶ GTR-104 4-Channel Full Range Amplifier

- Number of Channels: 4 channels
- 4-Ohm Power Output: 100Wrms x 4, <0.1% THD+N
- Total Peak Power Output: 1500Watt



▶ GX-A604 4-channel Full-Range Amplifier

- Number of Channels: 4 channels
- 4-Ohm Power Output: 60W rms x 4, <1% THD+N
- Total Peak Power Output: 435W
- Frequency Response: 20 – 200kHz (-3dB)

▶ GTR-7535 5-Channel System Amplifier

- Number of Channels: 5 Channels
- 4-Ohm Power Output 75Wrms x 4, <0.1% THD+N / 190Wrms x 1, <0.1% THD+N
- Total Peak Power Output: 2300Watt



Coming soon



JBL TRIP ►

The JBL Trip is designed to make phone calls safely while driving. HARMAN's patented noise cancellation technology allows for crystal clear phone calls even with high levels of road and wind noise. Apart from supporting Siri and Google Now, it can also receive safety and navigation prompts via Bluetooth from various navigation and ADAS apps. Furthermore, when you leave the car you can take it with you and enjoy your music with the famous JBL sound anywhere and even make your phone calls loud & clear.



Coming soon

► JBL Trip Portable Bluetooth Hands-Free system

- Transducer: 1 x 40mm
- Rated Power: 3.2W
- Frequency Response: 160Hz to 20KHz
- Battery Type: Lithium-ion Polymer (3.8V, 1200mAh)
- Music Playtime: Up to 8 hours
(varies by volume level and audio content)
- Call Time: Up to 20 hours
- Standby Time: Up to 800 hours
- Connectors: Micro USB
- Bluetooth Version: 3.0
- Dimensions (H x W x D): 134mm x 64mm x 34mm
- Weight: 230g

| SPEAKERS | CS742 | CS752 | CS762 | CS769 | CS760C |
|--|----------------------------------|--------------------------------------|--------------------------------------|---|---|
| Type | 4" Coaxial Car Audio Loudspeaker | 5-1/4" Coaxial Car Audio Loudspeaker | 6-1/2" Coaxial Car Audio Loudspeaker | 6" x 9" Three-Way Car Audio Loudspeaker | 6-1/2" Component Car Audio Loudspeaker System |
| High-Frequency Transducer | 1" titanium-laminate dome | 1" titanium-laminate dome | 1" titanium-laminate dome | 1" titanium-laminate dome | 1" titanium-laminate dome |
| Power Handling, RMS | 30W | 35W | 45W | 70W | 50W |
| Power Handling, Peak | 90W | 105W | 135W | 210W | 150W |
| Frequency Response | 75Hz – 20kHz | 70Hz – 20kHz | 55Hz–20kHz | 40Hz – 21kHz | 55Hz – 20kHz |
| Nominal Impedance | 4 ohms | 4 ohms | 4 ohms | 4 ohms | 4 ohms |
| Sesitivity (2.83@1m) | 90dB | 93dB | 93dB | 94dB | 92dB |
| Crossover | Onboard | Onboard | Onboard | Onboard | Onboard |
| Controls/Adjustments | None | None | None | None | None |
| External Diameter (Metric, English) | 166mm (6-1/2") | 235mm x 165mm (9-1/4" x 6-1/2") | 166mm (6-1/2") | 235mm x 165mm (9-1/4" x 6-1/2") | 130mm (5-1/8") |
| Mounting Cutout Diameter (Metric, English) | 143mm (5-5/8") | 221mm x 150mm (8-23/32" x 5-29/32") | 143mm (5-5/8") | 221mm x 150mm (8-23/32" x 5-29/32") | 120mm (4-3/4") |
| Mounting Depth (Metric, English) | 59mm (2-5/16") | 75mm (2-31/32") | 59mm (2-5/16") | 75mm (2-31/32") | 58mm (2-9/32") |
| Grill | No | No | No | No | No |

| SPEAKERS | GT7-4 | GT7-5 | GT7-5C | GT7-6 | GT7-6C | GT7-86 | GT7-96 |
|--|----------------------------------|--------------------------------------|--|--------------------------------------|---|---|---|
| Type | 4" Coaxial Car Audio Loudspeaker | 5-1/4" Coaxial Car Audio Loudspeaker | 5-1/4" Three-Way Car Audio Loudspeaker | 6-1/2" Coaxial Car Audio Loudspeaker | 6-1/2" Component Car Audio Loudspeaker System | 5" x 7" / 6" x 8" Coaxial Car Audio Loudspeaker | 6" x 9" Three-way Car Audio Loudspeaker |
| High-Frequency Transducer | 1" titanium-laminate dome | 1" titanium-laminate dome | 1" titanium-laminate dome | 1" titanium-laminate dome | 1" titanium-laminate dome | 1" titanium-laminate dome | 1" titanium-laminate dome |
| Power Handling, RMS | 30W | 35W | 35W | 45W | 50W | 60W | 70W |
| Power Handling, Peak | 90W | 105W | 105W | 135W | 150W | 180W | 210W |
| Frequency Response | 75Hz – 20kHz | 70Hz – 20kHz | 70Hz – 21kHz | 55Hz–20kHz | 50Hz – 20kHz | 45Hz – 20kHz | 40Hz – 21kHz |
| Nominal Impedance | 4 ohms | 4 ohms | 4 ohms | 4 ohms | 4 ohms | 4 ohms | 4 ohms |
| Sesitivity (2.83@1m) | 90dB | 93dB | 93dB | 93dB | 92dB | 93dB | 94dB |
| Crossover | Onboard | Onboard | Onboard | Onboard | Separate network | Onboard | Onboard |
| Controls/Adjustments | None | None | None | None | None | None | None |
| External Diameter (Metric, English) | 166mm (6-1/2") | 235mm x 165mm (9-1/4" x 6-1/2") | 130mm (5-1/8") | 166mm (6-1/2") | 166mm (6-9/16") | 144mm x 229mm (5-11/16" x 9-1/6") | 164mm x 235mm (6-1/2" x 9-5/16") |
| Mounting Cutout Diameter (Metric, English) | 143mm (5-5/8") | 221mm x 150mm (8-23/32" x 5-29/32") | 120mm (4-3/4") | 143mm (5-5/8") | 143mm (5-11/16") | 182mm (7-3/16") | 221mm (8-3/4") |
| Mounting Depth (Metric, English) | 59mm (2-5/16") | 75mm (2-31/32") | 58mm (2-9/32") | 59mm (2-5/16") | 59mm (2-3/8") | 56mm (2-7/32") | 58mm (2-9/32") |
| Grill | No | No | No | No | No | No | No |

| SPEAKERS | GX302 | GX402 | GX502 | GX602 | GX642 | GX862 | GX963 | GX600C |
|--|--------------------------------------|----------------------------------|--------------------------------------|--------------------------------------|---------------------------------------|---|---|---|
| Type | 3-1/2" Coaxial Car Audio Loudspeaker | 4" Coaxial Car Audio Loudspeaker | 5-1/4" Coaxial Car Audio Loudspeaker | 6-1/2" Coaxial Car Audio Loudspeaker | 4" x 6" Coaxial Car Audio Loudspeaker | 5" x 7" / 6" X 8" Coaxial Car Audio Loudspeaker | 6" x 9" Three-Way Car Audio Loudspeaker | 6-1/2" Car Audio Component Speaker System |
| High-Frequency Transducer | 1" titanium-laminate dome | 1" titanium-laminate dome | 1" titanium-laminate dome | 1" titanium-laminate dome | 1" titanium-laminate dome | 1" titanium-laminate dome | 1" titanium-laminate dome | 1" titanium-laminate dome |
| Power Handling, RMS | 25W | 35W | 45W | 60W | 40W | 60W | 100W | 70W |
| Power Handling, Peak | 75W | 105W | 135W | 180W | 120W | 180W | 210W | 210W |
| Frequency Response | 90Hz – 21kHz | 75Hz – 21kHz | 65Hz – 21kHz | 50Hz – 21kHz | 75Hz – 21kHz | 50Hz – 21kHz | 45Hz – 21kHz | 50Hz – 21kHz |
| Nominal Impedance | 2.3 ohms | 2.3 ohms | 2.3 ohms | 2.3 ohms | 2.3 ohms | 2.3 ohms | 2.3 ohms | 2.3 ohms |
| Sesitivity (2.83@1m) | 89dB | 90dB | 91dB | 92dB | 91dB | 92dB | 94dB | 92dB |
| Crossover | Onboard | Onboard | Onboard | Onboard | Onboard | Onboard | Onboard | Onboard |
| Controls/Adjustments | None | None | None | None | None | None | None | None |
| External Diameter (Metric, English) | 89mm (3-9/16") | 104mm (4-1/8") | 130mm (5-1/8") | 165mm (6-1/2") | 102mm x 159mm (4-1/16" x 6-5/16") | 143mm x 220mm (5-11/16" x 8-11/16") | 164mm x 235mm (6-1/2" x 9-5/16") | 166mm (6-1/2") |
| Mounting Cutout Diameter (Metric, English) | 79mm (3-1/8") | - | 120mm (4-3/4") | 129mm (5-1/8") | 86mm x 145mm (3-7/16" x 5-3/4") | 143mm x 220mm (5-11/16" x 8-11/16") | 164mm x 235mm (6-1/2" x 9-5/16") | 166mm (6-1/2") |
| Mounting Depth (Metric, English) | 36mm (1-7/16") | 47mm (1-7/8") | 57mm (2-1/4") | 52mm (5-1/8") | 47mm (1-7/8") | 61mm (2-7/16") | 74mm (2-7/8") | 52mm (2-1/16") |
| Grill | No | No | Yes | Yes | No | No | Yes | Yes |

| SPEAKERS | GTO19T | GTO329 | GTO429 | GTO529 | GTO629 | GTO939 | GTO6429 | GTO509C | GTO609C |
|--|----------------------------------|---|--------------------------------|---|---|-------------------------------------|-------------------------------------|--|--|
| Type | 3/4" Car Audio Component Tweeter | 3-1/2" (87mm) 2-Way Car Audio Loudspeaker | 4" 2-Way Car Audio Loudspeaker | 5-1/4" 2-Way Car Audio Loudspeaker | 165mm (6-1/2") 2-Way Car Audio Loudspeaker | 6" x 9" 3-Way Car Audio Loudspeaker | 4" x 6" 2-Way Car Audio Loudspeaker | 5-1/4" 2-Way Car Audio Component System | 6-1/2" 2-Way Car Audio Component System |
| High-Frequency Transducer | Edge-driven soft dome tweeter | Textile balanced dome tweeter | Textile balanced dome tweeter | Edge-driven soft dome tweeter with level adjustment | Edge-driven soft dome tweeter with level adjustment | Edge-driven dome super tweeter | Balanced soft dome tweeter | Edge-driven soft dome tweeter | Edge-driven soft dome tweeter |
| Power Handling, RMS | 45W | 25W | 35W | 45W | 60W | 100W | 45W | 75W | 1000W |
| Power Handling, Peak | 135W | 75W | 105W | 135W | 180W | 300W | 135W | 225W | 270W |
| Frequency Response | 2.5Hz – 21kHz | 85Hz – 21kHz | 75Hz – 21kHz | 67Hz – 21kHz | 53Hz – 21kHz | 46Hz – 21kHz | 75Hz – 21kHz | 67Hz – 21kHz | 53Hz – 21kHz |
| Nominal Impedance | 3 ohms | 3 ohms | 3 ohms | 3 ohms | 3 ohms | 3 ohms | 3 ohms | 3 ohms | 3 ohms |
| Sesitivity (2.83@1m) | 93dB | 91dB | 92dB | 92dB | 93dB | 94dB | 92dB | 92dB | 93dB |
| Crossover | 4.0 kHz | 5.0 kHz | 5.0 kHz | 4.5 kHz | 3.5 kHz | 3.0 kHz | 4.5 kHz | 3.8 kHz | 4.0 kHz |
| Controls/Adjustments | - | - | - | Tweeter level, 0dB / +3dB T | weeter level, 0dB / +3dB | Tweeter level, 0dB / +3dB | - | Tweeter level, 0dB / +3dB | Tweeter level, 0dB / +3dB |
| External Diameter (Metric, English) | 47mm (1-7/8") | 91mm (3-9/16") | 100mm (3-15/16") | 131mm (5-3/16") | 158mm (6-1/4") | 243mm x 172mm (9-9/16" x 6-13/16") | 156mm x 95mm (6-1/8" x 3-3/4") | Woofer: 158mm (6-1/4") Tweeter: 47mm (1-7/8") | Woofer: 175mm (6-7/8") Tweeter: 47mm (1-7/8") |
| Mounting Cutout Diameter (Metric, English) | 41mm (1-5/8") | 79mm (3-1/8") | 120mm (4-3/4") | 119mm (4-11/16") | 129mm (5-1/16") | 219mm x 149mm (8-5/8" x 5-7/8") | 146mm x 84mm (5-3/4" x 3-5/16") | Woofer: 118mm (4-11/16") Tweeter: 41mm (1-5/8") | Woofer: 127mm (5") Tweeter: 41mm (1-5/8") |
| Mounting Depth (Metric, English) | 20mm (13/16") | 35mm (1-3/8") | 48mm (1-15/16") | 54mm (2-1/8") | 50mm (2") | 71mm (2-13/16") | 43mm (1-11/16") | Woofer: 57mm (2-1/4") Tweeter: 20mm (13/16") | Woofer: 52mm (2-1/16") Tweeter: 20mm (13/16") |
| Grill | Yes | No | Yes | Yes | Yes | Yes | No | Yes | Yes |

| WOOFERS | CS1204B | CS1214 | CS1214T | CSX-1400BP |
|----------------------|--|-----------------------|--------------------------------------|--|
| Type | 12" (300mm) Subwoofer closed enclosure | 12" (300mm) Subwoofer | 12" (300mm) Tube subwoofer enclosure | 12" (300mm) Bandpass subwoofer enclosure |
| Power Handling, RMS | 250Watt | 250Watt | 250Watt | 350Watt |
| Power Handling, Peak | 1000Watt | 1000Watt | 1000Watt | 1400Watt |
| Sensitivity | (2.83V/1m) 93dB | (2.83V/1m) 90 dB | (2.83V/1m) 90 dB | (@ 2.83V): 93dB |
| Frequency response | 23Hz – 450Hz | 35Hz – 200Hz | 35Hz – 200Hz | 45Hz – 130Hz |
| Impedance | 4 Ohms | 4 Ohms | 4 Ohms | 4 ohms |
| Mounting Depth | 6-1/4" (159mm) | 6-1/16" (153mm) | - | - |
| Cutout Diameter | 11-1/8" (283mm) | 11" (279mm) | - | - |
| Outside Dimensions | - | - | Tube Diameter: 330mm | (LxDxH): 18-3/4" x 16-1/4" x 15-3/8" (475mm x 412mm x 390mm) |

| WOOFERS | S2-1024 | S2-1224 | S2-1224SS |
|----------------------|--------------------------------|--------------------------------|--|
| Type | 10" (250mm) Subwoofer | 12" (300mm) Subwoofer | 12" (300mm) Slipstream ported enclosure |
| Power Handling, RMS | 250Watt | 275Watt | 275Watt |
| Power Handling, Peak | 100Watt | 1100Watt | 1100Watt |
| Sensitivity | (@ 2.83V): 92dB | (@ 2.83V): 93dB | (@ 2.83V): 93dB |
| Frequency response | 30Hz – 175Hz | 25Hz – 175Hz | 25Hz – 175Hz |
| Impedance | 2 or 4 ohms, switch-selectable | 2 or 4 ohms, switch-selectable | 2 or 4 ohms, switch-selectable |
| Mounting Depth | 5-5/8" (142mm) | 6-1/2" (165mm) | - |
| Cutout Diameter | 9" (228mm) | 11-1/4" (285mm) | - |
| Outside Dimensions | - | - | (L x D x H): 23-5/8" x 13" x 16-3/8" (600mm x 330mm x 415mm) |

| AMPLIFIED | GT-BASSPRO12 | BASSPRO SL |
|---------------------------|---|---|
| Type | 12" Cone ported amplified subwoofer | 8" Cone powered, under seat woofer enclosure |
| Power Handling, RMS | 150Watt | 125Watt |
| Sensitivity | 50mV–4V (line-level input) 0.4V–16V (high-level input) | 0.2V – 2V (Line-Level Input) 2V – 20V (High-Level Input) |
| Frequency response | 35Hz–120Hz | 35Hz – 120Hz |
| Crossover Frequency/Stope | 70Hz–120Hz | 50Hz – 120Hz |
| Crossover Slope | 12dB/octave | 12dB/octave |
| Bass Boost | 0 – 12dB adjustable | 0dB to +9dB @ 70Hz |
| Controls | Crossover frequency, phase, bass boost, level, level remote | Crossover frequency, phase, bass boost, level, level remote |
| Connections | Line-level inputs, hi-level inputs, remote volume control | Line-level inputs, hi-level inputs, remote volume control |
| Dimensions | 570mm x 369mm x 305mm (22-7/16" x 14-1/2" x 12") | 13-9/16" x 9-7/8" x 2-13/16" (344mm x 250mm x 71mm) |
| Current Draw (Full Power) | 13.5A | 12A |
| Crrent Draw (Idle) | <500mA | <800mA |
| Fuse | Fuse: 25A | Fuse: 20A |

| AMPLIFIERS | GX-602 | GX-A604 | GX-A3001 |
|-------------------------------|---------------------------------|---|----------------------------------|
| Number of Channels | 2 channels | 4 channels | 5 Channels |
| 4-Ohm Power Output | 60W rms x 2, <1% THD+N | 60W rms x 4, <1% THD+N | 200W rms x 1, <1% THD+N |
| 2-Ohm Power Output | 85W rms x 2, <1% THD+N | 85W rms x 4, <1% THD+N | 300W rms x 1, <1% THD+N |
| 4-Ohm Bridged Power Output | 170W x 1 into 4 ohms | 170W x 2 into 4 ohms | - |
| Total Peak Power Output | 280W | 435W | 415W |
| Signal-to-Noise Ratio | 93dB (ref rated output @ 4ohms) | 93dB (ref rated output @ 4 ohms) | 98dB (ref rated output @ 4 ohms) |
| Frequency Response | 20Hz - 20kHz ±1dB | 20Hz - 20kHz ±1dB | 10Hz - 320Hz |
| Input Sensitivity | 200mV-20V | 200mV-20V | 200mV-20V |
| Variable Electronic Crossover | Yes | Yes | Yes |
| Variable Bass Boost | Yes | Yes | No |
| Input Connections | L & R line-Level (RCA) | 4 x L & R line-Level; Front L & R, Rear L & R (RCA) | L & R line-Level (RCA) |
| Speaker Connections | 2 | 4 | 1 |
| Signal Output Connections | No | L & R line-level (summed) | Line-level (pas-through) |
| Dimensions (LxWxH) | 198mmx206mmx52mm | 300mmx206mmx52mm | 291mmx206mmx52mm |

| AMPLIFIERS | GTR-601 | GTR-104 | GTR-7535 |
|-------------------------------|---|---|---|
| Number of Channels | 2 channels | 4 channels | 5 Channels |
| 4-Ohm Power Output | 400Wrms x 1, <0.1% THD+N | 100Wrms x 4, <0.1% THD+N | 75Wrms x 4, <0.1% THD+N 190Wrms x 1, <0.1% THD+N |
| 2-Ohm Power Output | 600Wrms x 1, <0.1% THD+N | 150Wrms x 4, <0.1% THD+N | 105Wrms x 4, <0.1% THD+N 350Wrms x 1, <0.3% THD+N |
| 4-Ohm Bridged Power Output | - | 350Wrms x 2, <1% THD+N | 300Wrms x 2, <1% THD+N |
| Total Peak Power Output | 1500Watt | 1500Watt | 2300Watt |
| Signal-to-Noise Ratio | >80dB (ref 1W output @ 2Ω) | >75dB (ref 1W output @ 4Ω) | >75dB x4 (ref 1W output @ 4Ω) >80dB x 1 (ref 1W output @ 2Ω) |
| Frequency Response | 10 - 320Hz | 10 - 100kHz | 10 - 100k (main) 10 - 320 (sub) |
| Input Sensitivity | 200mV-20V | 200mV-20V | 200mV-20V |
| Variable Electronic Crossover | Yes | Yes | Yes |
| Variable Bass Boost | Bass EQ | Bass EQ | Bass EQ |
| Input Connections | RCA low level; in-line adapter for high level | RCA low level; in-line adapter for high level | RCA low level; in-line adapter for high level |
| Speaker Connections | 1 | 4 | 5 |
| Signal Output Connections | Full range stereo | Full range stereo | No |
| Dimensions (LxWxH) | 266 x 180 x 55 | 266 x 180 x 55 | 336 x 180 x 55 |





HARMAN International Industries, Incorporated
8500 Balboa Boulevard, Northridge, CA 91329 USA

© 2014 HARMAN International Industries, Incorporated. All rights reserved. JBL, Logic 7 and Plus One (patent no. 7,548,631 B2) are trademarks of HARMAN International Industries, Incorporated, registered in the United States and/or other countries. BassPro and Hear the truth are trademarks of HARMAN International Industries, Incorporated. iPhone and iPod are trademarks of Apple Inc., registered in the U.S. and other countries. Features, specifications and appearance are subject to change without notice. Part No. JCCAT1112 EN