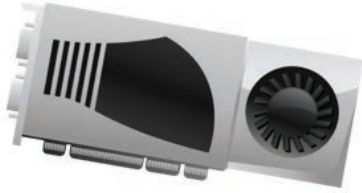


Sales guide

HP Stable and Consistent Offerings



Choosing hardware and software for a workstation is often a no-brainer—you know what you need before you even start looking at platforms. What if you could pick and choose your components based not only on your individual requirements, but also on the assurance that they would be available for the lifecycle of your HP Desktop Workstation? Now, with HP Stable & Consistent Offerings, you can. Choose from a range of options that will be available as long as your HP Workstation, including:



- Processors
- Graphics cards
- Hard drives
- Optical drives
- Memory
- Operating systems
- Peripherals

Sound amazing? It is. That's HP.

Imagine measuring refresh cycles in years instead of months. HP Stable & Consistent Offerings allow HP Desktop Workstation customers such as OEMs and large enterprises to simplify their certification and support burdens and streamline large deployments with configurations that are long-term future-ready right out of the box. This stability is also a bonus for resellers and channel partners who want to meet the specialized platform stability requirements of their large volume customers and help them minimize the disruptions associated with repeatedly qualifying new configurations.

As part of its commitment to hardware, software, and solution innovation, HP is proud to introduce this breakthrough platform configuration stability to HP Workstation customers. HP Stable & Consistent Offerings are built on the foundation of a carefully chosen set of hardware and software designed and tested to work with all HP Desktop Workstation platforms from product launch through their end of life. These components and their corresponding HP Desktop Workstation platform compatibility are outlined on the next page.*

HP Stable & Consistent Offerings are available worldwide to all HP Desktop customers at no additional cost—no kidding. Simply select your hardware and software components when you customize your HP Desktop and be assured that you'll be able to buy that same configuration throughout the lifecycle of the product, from product launch through retirement.

** While it is HP's intention to provide the selected components throughout the lifecycle of the workstations, please be aware that it is possible that a supplier could discontinue an offering earlier than expected. If this were to happen, it could result in HP's inability to continue to procure and make available that component.*

Stable Features						
	HP Z1	HP Z230 SFF	HP Z230 Tower	HP Z440	HP Z640	HP Z840
Processor¹						
Intel® Xeon® E3-1225 v3		•	•			
Intel® Xeon® E3-1240 v3		•	•			
Intel® Xeon® E3-1245 v3		•	•			
Intel® Xeon® E3-1280 v3		•	•			
Intel® Xeon® E5-1620 v3				•	•	
Intel® Xeon® E5-2620 v3					•	•
Intel® Xeon® E5-2630 v3				•	•	•
Intel® Xeon® E5-2643 v3					•	•
Graphics						
NVIDIA® NVS™ 310		•	•			
NVIDIA® NVS™ 315		•	•			
NVIDIA® NVS™ 510		•	•	•	•	
NVIDIA® Quadro® K620				•	•	•
NVIDIA® Quadro® K2000			•			
NVIDIA® Quadro® K2100M	•					
NVIDIA® Quadro® K2200				•	•	•
AMD FirePro™ W2100				•	•	•
Hard Drive²						
500 GB SATA 7200 RPM	•	•	•	•	•	•
1 TB SATA 7200 RPM	•	•	•	•	•	•
Optical Device³						
Slim SuperMulti DVD/RW		•	•	•	•	•
System Memory⁴						
4 GB DDR3-1600 ECC Unbuffered		•	•			
8 GB DDR3-1600 ECC Unbuffered		•	•			
4 GB DDR3-1866 ECC Unbuffered	•					
4 GB DDR3-1866 non ECC Unbuffered	•					
8 GB DDR3-1866 ECC Unbuffered	•					
8 GB DDR4-2133 RDIMM				•	•	•
16 GB DDR4-2133 RDIMM				•	•	•
Keyboard						
HP USB Keyboard	•	•	•			
Mouse						
HP Wireless Keyboard and Mouse	•					
HP USB Optical Mouse		•	•			

- 1 Multi-Core is designed to improve performance of certain software products. Not all customers or software applications will necessarily benefit from use of this technology. 64-bit computing on Intel® architecture requires a computer system with a processor, chipset, BIOS, operating system, device drivers, and applications enabled for Intel® 64 architecture. Processors will not operate (including 32-bit operation) without an Intel® 64 architecture-enabled BIOS. Performance will vary depending on your hardware and software configurations. Intel's numbering is not a measurement of higher performance.
- 2 For hard drives, 1 GB = 1 billion bytes. TB = 1 trillion bytes. Actual formatted capacity is less. Up to 20 GB is reserved for system recovery software.
- 3 Actual speeds may vary. Does not permit copying of commercially available DVD movies or other copyright protected materials. Intended for creation and storage of your original material and other lawful uses.
- 4 Each processor supports up to 2 channels (HP Z1/HP Z230 SFF/HP Z230 Tower) or 4 channels (HP Z440/HP Z640/HP Z840) of DDR3 memory. To realize full performance at least 1 DIMM must be inserted into each channel.

Sign up for updates
hp.com/go/getupdated

© Copyright 2010-2015 Hewlett-Packard Development Company, L.P. The information contained herein is subject to change without notice. The only warranties for HP products and services are set forth in the express warranty statements accompanying such products and services. Nothing herein should be construed as constituting an additional warranty. HP shall not be liable for technical or editorial errors or omissions contained herein.

Intel and Xeon are trademarks of Intel Corporation in the U.S. and/or other countries. AMD and FirePro are trademarks of Advanced Micro Devices, Inc. NVIDIA, Quadro, and NVS are trademarks and/or registered trademarks of NVIDIA Corporation in the U.S. and other countries.

