

Job Name

Purchaser

Submitted to

Unit Designation

Location

Engineer

Reference

Schedule #

Approval

Construction

Wind Baffle Project Selection

Model	Select	Qty.	Model	Select	Qty.	Model	Select	Qty.
WBF-1M2			WBB-1M			WBB-7M		
WBF-2M			WBB-2M			WBB-7M-B		
WBF-2M-B			WBB-2M-B			WBB-8M		
WBF-3M			WBB-3M			WBB-9M		
WBF-4M			WBB-4M			WBB-10M		
WBF-5M			WBB-5M			WBB-11M		
WBF-6M			WBB-6M					
WBF-7M			WBB-6M-B					

Specifications

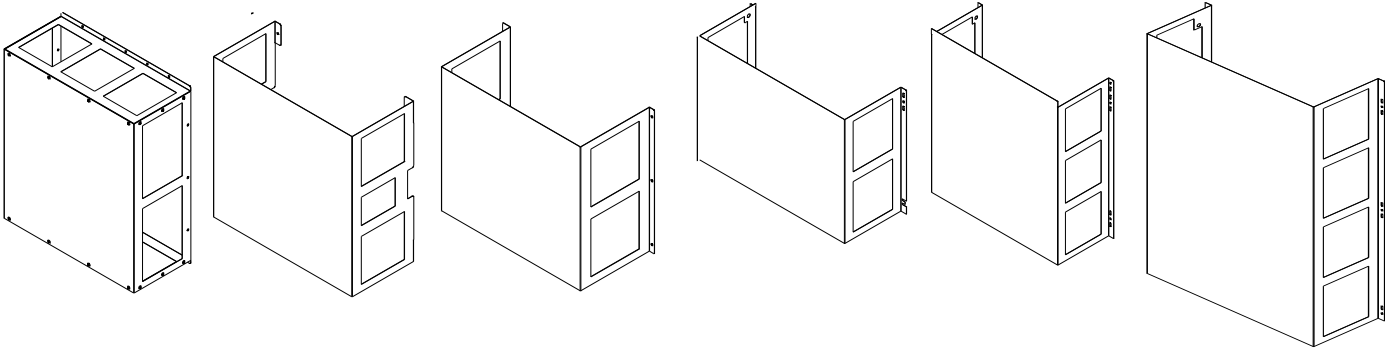
WBF models were designed to be placed on the fan discharge side (front), while WBB models were designed to be placed on the coil intake side of the unit (back).

Back baffles are only required for applications where the outdoor unit is not adjacent to a structure that would protect the intake side from prevailing wind (ex: roof top). Low ambient cooling applications will require both front and back baffles.

Material: Powder coated, galvanized steel

Baffle Weights

Front Model	Weight (lbs.)	Back Model	Weight (lbs.)
WBF-1M2	16.30	WBB-1M	8.19
WBF-2M	11.13	WBB-2M	14.25
WBF-2M-B	11.88	WBB-2M-B	11.88
WBF-3M	5.61	WBB-3M	11.64
WBF-4M	9.17	WBB-4M	16.75
WBF-5M	7.43	WBB-5M	5.83
WBF-6M	19.48	WBB-6M	6.95
WBF-7M	9.9	WBB-6M-B	6.2
		WBB-7M	9.13
		WBB-7M-B	7.67
		WBB-8M	15.94
		WBB-9M	13.25
		WBB-10M	10.13
		WBB-11M	9.45



## Side Discharge Wind Baffles for Samsung Outdoor Units

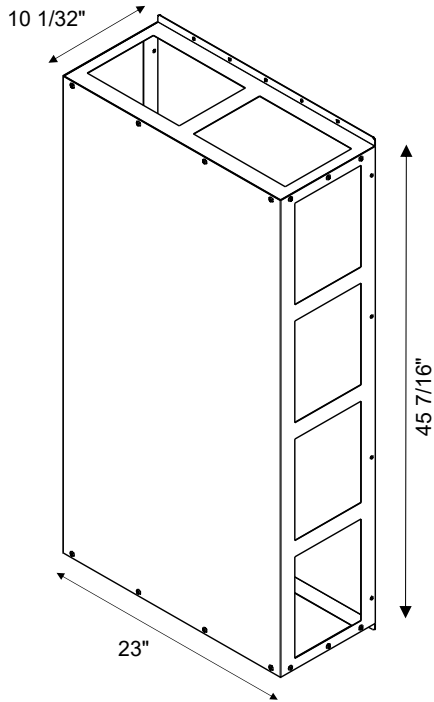
## Baffle Compatibility

Model Type	ODU Model	US Code	Front Model	Back Model
WindFree™ <sup>1</sup> RAC 3.0e	AR09CSFCMWKXCV	RXS09CMC	WBF-3M	WBB-5M
	AR12CSFCMWKXCV	RXS12CMC	WBF-3M	WBB-5M
	AR15CSFCMWKXCV	RXS15CMC	WBF-5M	WBB-6M-B
	AR18CSFCMWKXCV	RXS18CMC	WBF-5M	WBB-6M-B
	AR24CSFCMWKXCV	RXS24CMC	WBF-7M	WBB-7M-B
WindFree™ <sup>1</sup> RAC 3.0	AR09CSDABWKXCV	RXS09ABC	WBF-3M	WBB-5M
	AR12CSDABWKXCV	RXS12ABC	WBF-3M	WBB-5M
	AR15CSDABWKXCV	RXS15ABC	WBF-7M	WBB-7M-B
	AR18CSDABWKXCV	RXS18ABC	WBF-7M	WBB-7M-B
	AR24CSDABWKXCV	RXS24ABC	WBF-2M-B	WBB-3M
Max Heat RAC 3.0	AR09CSDACWKXCV	RXS09ACC	WBF-3M	WBB-5M
	AR12CSDACWKXCV	RXS12ACC	WBF-3M	WBB-5M
	AR15CSDACWKXCV	RXS15ACC	WBF-7M	WBB-7M-B
	AR18CSDACWKXCV	RXS18ACC	WBF-7M	WBB-7M-B
	AR24CSDACWKXCV	RXS24ACC	WBF-2M-B	WBB-3M
MAX RAC	AR36BSHUMGMXCV	RXS36UMB	WBF-1M2	WBB-2M-B
FJM	AJ020BXJ2CH/AA	JXH20J2B	WBF-7M	WBB-7M-B
	AJ024BXJ3CH/AA	JXH24J3B	WBF-7M	WBB-7M-B
	AJ036BXJ4CH/AA	JXH36J4B	WBF-2M-B	WBB-11M
	AJ048BXJ5CH/AA	JXH48J5B	WBF-1M2	WBB-2M-B
FJM Max Heat	AJ020BXS3CH/AA	JXH20S3B	WBF-2M-B	WBB-11M
	AJ024BXS4CH/AA	JXH24S4B	WBF-2M-B	WBB-11M
	AJ030BXS4CH/AA	JXH30S4B	WBF-2M-B	WBB-11M
	AJ036BXS4CH/AA	JXH36S4B	WBF-1M2	WBB-2M-B
Standard CAC	AC009BXADCH/AA	CXH09ADB	WBF-3M	WBB-5M
	AC012BXADCH/AA	CXH12ADB	WBF-3M	WBB-5M
	AC018BXADCH/AA	CXH18ADB	WBF-7M	WBB-7M-B
	AC024BXADCH/AA	CXH24ADB	WBF-2M-B	WBB-3M
	AC030BXADCH/AA	CXH30ADB	WBF-2M-B	WBB-3M
	AC036BXADCH/AA	CXH36ADB	WBF-1M2	WBB-2M-B
	AC042BXADCH/AA	CXH42ADB	WBF-1M2	WBB-2M-B
CAC -40 Cooling	AC048BXADCH/AA	CXH48ADB	WBF-1M2	WBB-2M-B
	AC018BXSCCC/AA	CXC18SCB	WBF-5M	WBB-6M-B
	AC024BXSCCC/AA	CXC24SCB	WBF-7M	WBB-7M-B
	AC030BXSCCC/AA	CXC30SCB	WBF-2M-B	WBB-3M
CAC Max Heat	AC036BXSCCC/AA	CXC36SCB	WBF-2M-B	WBB-3M
	AC030BXSCCH/AA	CXH30SCB	WBF-6M	WBB-4M
CAC Max Heat	AC036BXSCCH/AA	CXH36SCB	WBF-6M	WBB-4M
WindFree™ <sup>1</sup> RAC 2.0e	AR09BSFCMWKXCV	RXS09CMB	WBF-3M	WBB-5M
	AR12BSFCMWKXCV	RXS12CMB	WBF-3M	WBB-5M
	AR18BSFCMWKXCV	RXS18CMB	WBF-5M	WBB-6M-B
	AR24BSFCMWKXCV	RXS24CMB	WBF-7M	WBB-7M-B
WindFree™ <sup>1</sup> RAC 2.0	AR09TSFABWKXCV	RXS09ABT	WBF-3M	WBB-5M
	AR12TSFABWKXCV	RXS12ABT	WBF-3M	WBB-5M
	AR18TSFABWKXCV	RXS18ABT	WBF-7M	WBB-7M-B
	AR24TSFABWKXCV	RXS24ABT	WBF-2M-B	WBB-3M
Max Heat RAC 2.0	AR09TSFACWKXCV	RXS09ACT	WBF-3M	WBB-5M
	AR12TSFACWKXCV	RXS12ACT	WBF-3M	WBB-5M
	AR15BSFACWKXCV	RXS15ACB	WBF-7M	WBB-7M-B
	AR18TSFACWKXCV	RXS18ACT	WBF-5M	WBB-6M-B
	AR24TSFACWKXCV	RXS24ACT	WBF-7M	WBB-7M-B
Quantum 2.0	AR09TSFYBWKXCV	RXS09YBT	WBF-3M	WBB-5M
	AR12TSFYBWKXCV	RXS12YBT	WBF-3M	WBB-5M
	AR18TSFYBWKXCV	RXS18YBT	WBF-5M	WBB-6M-B
	AR24TSFYBWKXCV	RXS24YBT	WBF-7M	WBB-7M-B

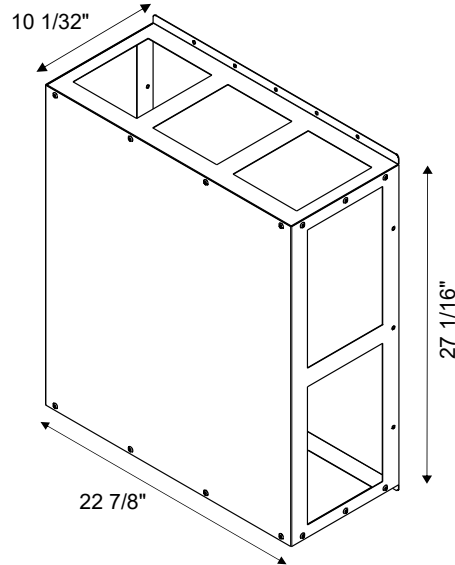
Model Type	ODU Model	US Code	Front Model	Back Model
MAX RAC	AQX36VFUAGM/CV	N/A	WBF-4M	WBB-9M
Standard CAC	AC009KXADCH/AA	CXH09ADK	WBF-3M	WBB-5M
	AC012KXADCH/AA	CXH12ADK	WBF-3M	WBB-5M
	AC018JXADCH/AA	CXH18ADJ	WBF-4M	WBB-6M-B
	AC018KXADCH/AA	CXH18ADK	WBF-4M	WBB-6M
	AC024JXADCH/AA	CXH24ADJ	WBF-2M-B	WBB-3M
	AC030JXADCH/AA	CXH30ADJ	WBF-2M-B	WBB-3M
	AC036JXADCH/AA	CXH36ADJ	WBF-1M2	WBB-2M-B
	AC042JXADCH/AA	CXH42ADJ	WBF-1M2	WBB-2M-B
	AC048JXADCH/AA	CXH48ADJ	WBF-1M2	WBB-2M-B
	AC054KXADCH/AA	CXH54ADK	WBF-6M	WBB-4M
CAC -40 Cooling	AC018MXSCCC/AA	CXC18SCM	WBF-5M	WBB-6M-B
	AC024MXSCCC/AA	CXC24SCM	WBF-2M-B	WBB-7M-B
	AC030MXSCCC/AA	CXC30SCM	WBF-2M-B	WBB-3M
	AC036MXSCCC/AA	CXC36SCM	WBF-2M-B	WBB-3M
CAC Max Heat	AC030JXSCCH/AA	CXH30SCJ	WBF-6M	WBB-4M
	AC036JXSCCH/AA	CXH36SCJ	WBF-6M	WBB-4M
DVM S Eco	AM036*XMDC*/AA	N/A	WBF-1M2	WBB-2M-B
	AM048*XMDC*/AA	N/A	WBF-1M2	WBB-2M-B
	AM053*XMDC*/AA	N/A	WBF-1M2	WBB-2M-B
	AM060*XMDC*/AA	N/A	WBF-6M	WBB-8M

<sup>1</sup> The WindFree™ unit delivers an air current that is under 0.15 m/s while in WindFree™ mode. Air velocity that is below 0.15 m/s is considered "still air" as defined by ASHRAE (American Society of Heating, Refrigerating, and Air-Conditioning Engineers).

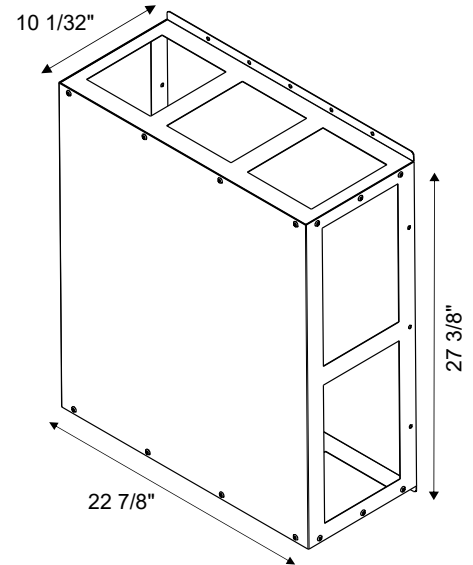
**WBF-1M2**



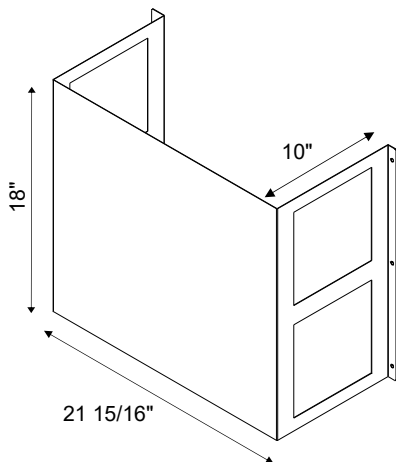
**WBF-2M**



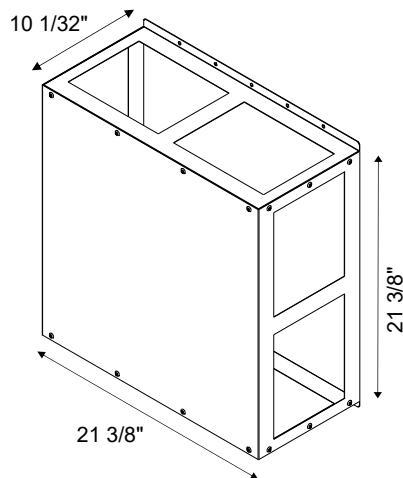
**WBF-2M-B**



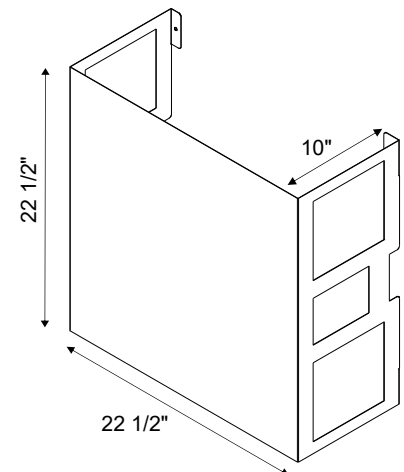
**WBF-3M**



**WBF-4M**

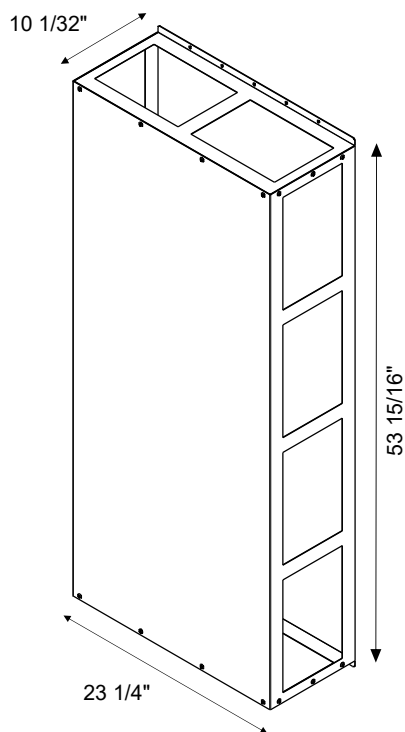


**WBF-5M**

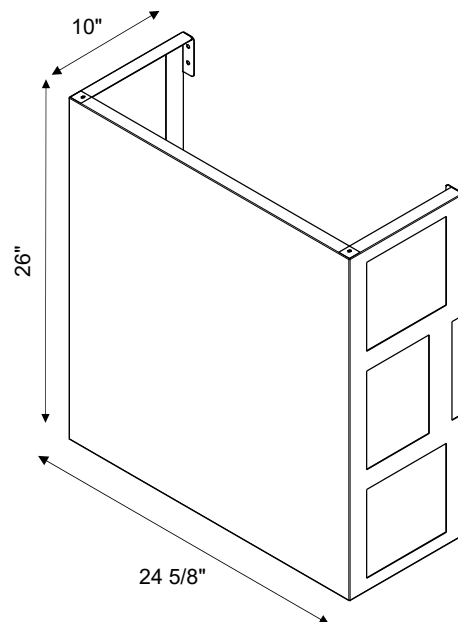


*Individual drawings are not to scale. For reference only.*

**WBF-6M**

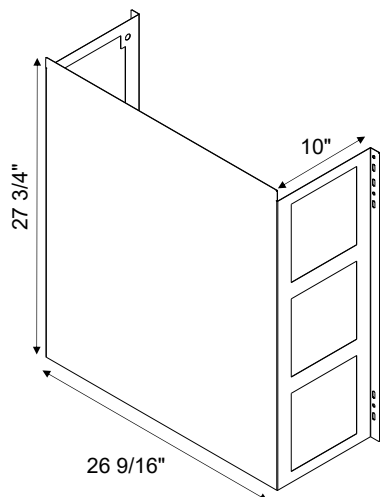


**WBF-7M**

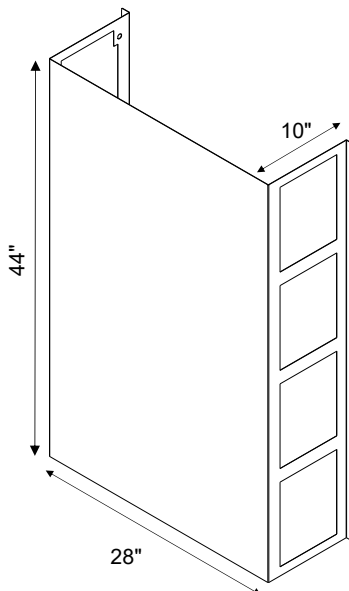


*Individual drawings are not to scale. For reference only.*

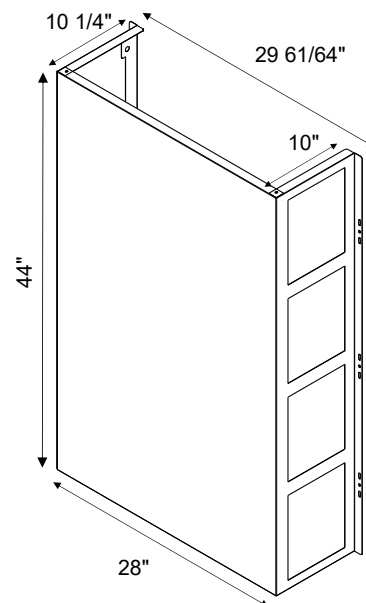
**WBB-1M**



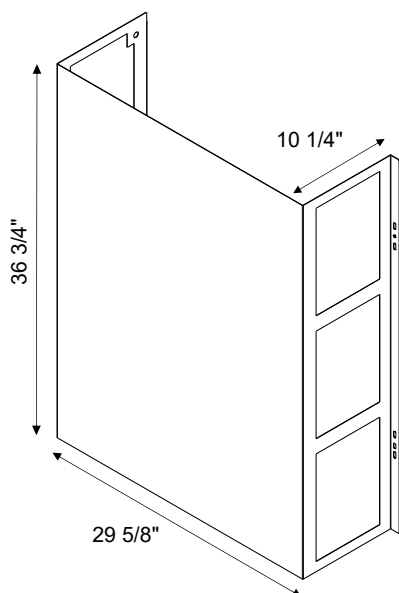
**WBB-2M**



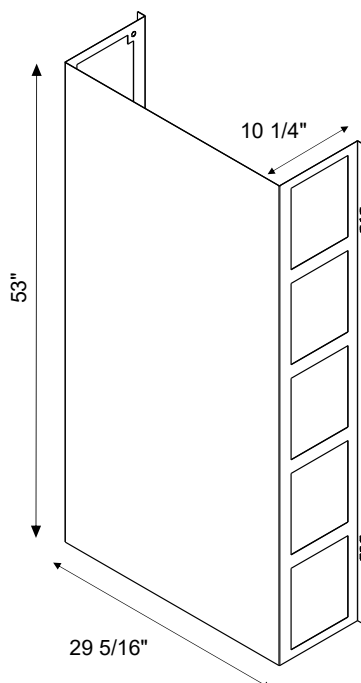
**WBB-2M-B**



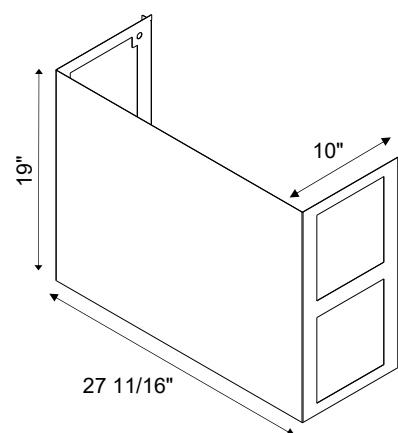
**WBB-3M**



**WBB-4M**

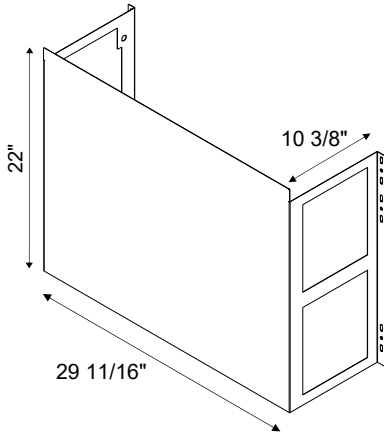


**WBB-5M**

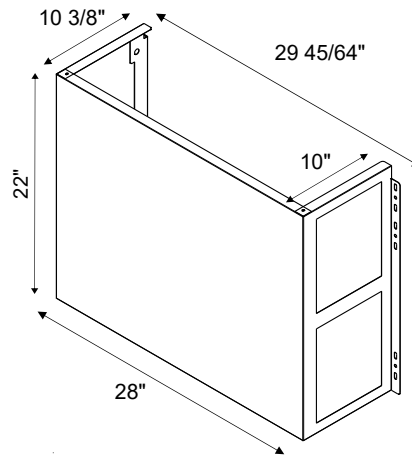


*Individual drawings are not to scale. For reference only.*

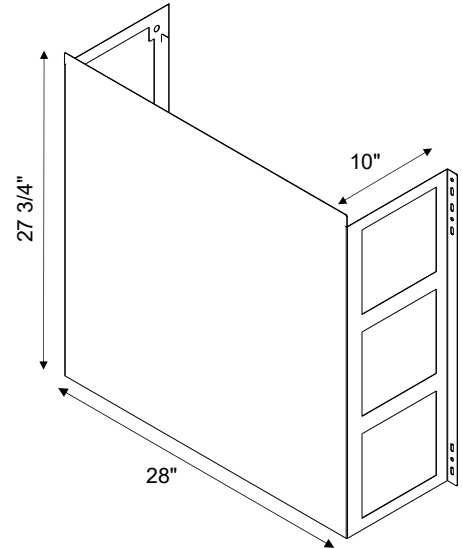
**WBB-6M**



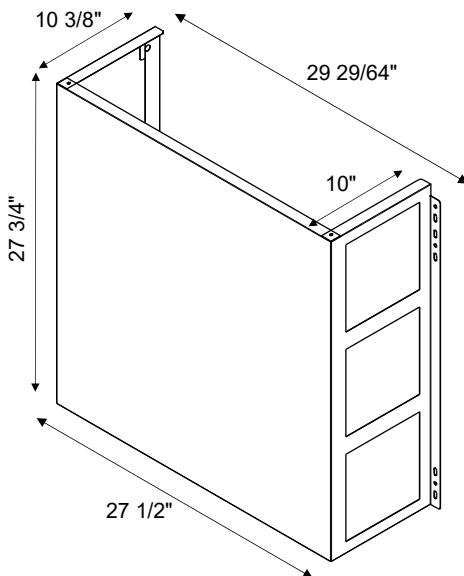
**WBB-6M-B**



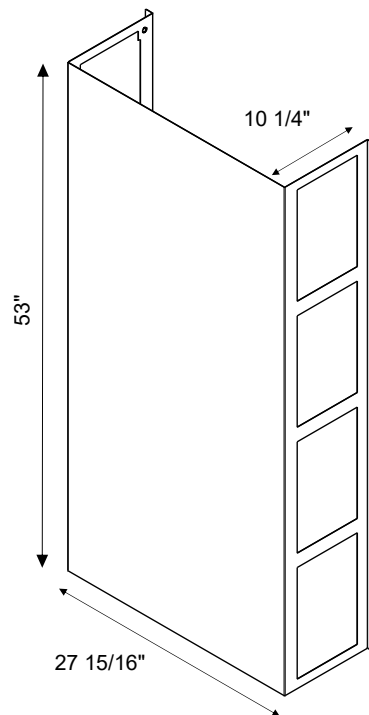
**WBB-7M**



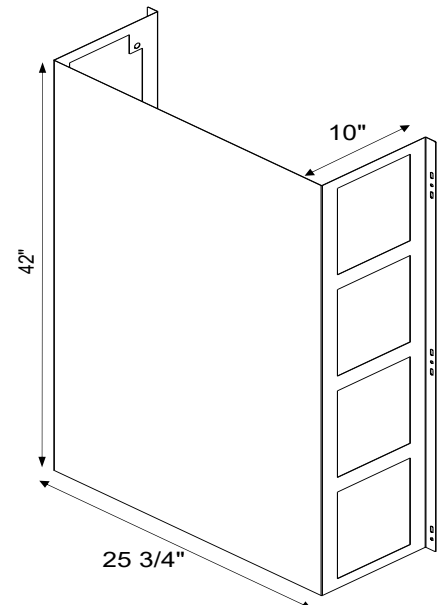
**WBB-7M-B**



**WBB-8M**

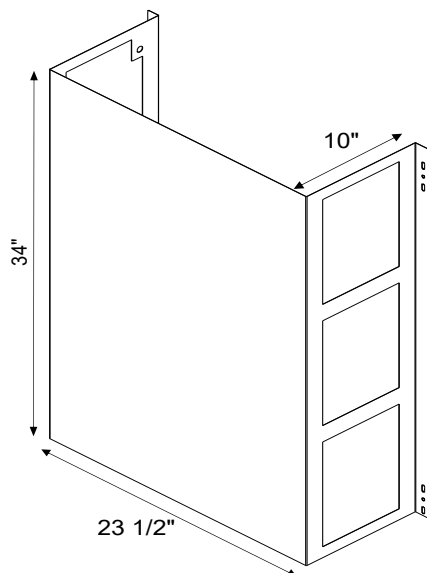


**WBB-9M**

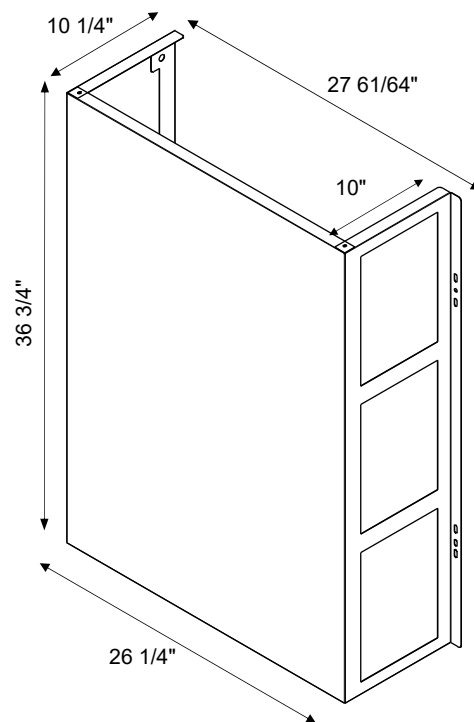


**Individual drawings are not to scale. For reference only.**

**WBB-10M**



**WBB-11M**



*Individual drawings are not to scale. For reference only.*