



LF-D518 Dash Camera



User Manual

GuangZhou LingFeng electronics.Co.,Ltd.

Dear Customer

Thanks for purchasing Diamond Lark dash cam. Before you use this product for the first time, please read the instructions in detail, which can help you understand and use this product faster

We are always committed to making excellent products to serve customers, and we hope you can provide valuable advice to us. If you have any questions or quality problems about the product during use, please contact our after-sales service. We will try our best to solve your problems

If you think the product is good after use, we hope you can share it with your family and friends

Tks&BestRegards ,
Diamond Lark

Please note the following

- 1.This product already comes with 64GB memory card. If you need to replace a new card, please replace the class 10-U3 speed micro SD card (supports 128GB maximum storage)
- 2.The car charger cord is 11.5 feet long and the rear-view camera cord is 19.5 feet long
- 3.If you have any questions or encounter issues while using the product, please feel free to contact us for assistance Diamond-Lark@outlook.com.
- 4.To ensure uninterrupted video recording while driving, please disable the 'Motion Detection' function.
- 5.Please set the G-sensor sensitivity to Low or turn it off; otherwise, the video file will be easily frozen when your car brakes, even if the dash cam's loop recording feature is on. For product stability, We suggest that you format your memory card every two weeks.
- 6.Do not forget to activate the video lock feature. If you have a video that requires immediate saving, you may locate it in playback mode and lock it to prevent it from being overwritten.
- 7.The ambient temperature range for the typical operation of this device is between -4°F and 158°F. Exceeding this temperature range may result in the failure of the product
- 8.If you need to implement a 24-hour parking monitoring function, you must purchase additional hardware to use in conjunction with this product. This product does not include a hardware kit.
- 9.Please pay attention to the correct installation of the memory card to avoid damaging the card slot.
- 10.The dash cam provides the one-click video lock function. If you want to save the video you are recording, you can manually lock the video
- 11.If you want to activate the screensaver of the dashcam, you can briefly press the "power key" button manually

Main function introduction

WiFi&APP Control: You can use the viidure application to watch, download, or share videos recorded by the dash cam on your smart phone, and also change the settings of the dash cam through the application on your smart phone.

Loop recording: The dash cam will continuously record new videos in a cyclical manner within the time interval that you set. You can set the time interval to off, 1 minute, 3 minutes, or 5 minutes.

Parking Monitoring: Under parking mode, the dash cam is in the power-off condition. The dash cam will automatically turn on and start recording when it detects a vibration. If you need 24-hour parking monitoring, you will need to purchase a separate hardware kit.

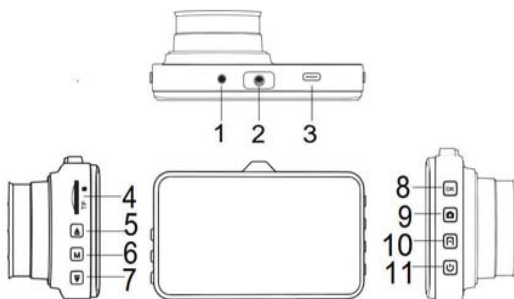
G-sensor: off/low/medium/high. The default setting is off. The dash cam can automatically detect vibrations or collisions and protect locked files from being overwritten or covered during video recording. The sensitivity of the G-sensor can be set to off, low, medium, or high.

Screen Saver: Off/10seconds/30seconds/1minute.

Recording Screen Switching: The dash cam can be set to display three different screens: front recording only, rear recording only, or front and rear recording simultaneously. You can switch between these views by briefly pressing the "M" button while the dash cam is in either recording or non-recording mode.

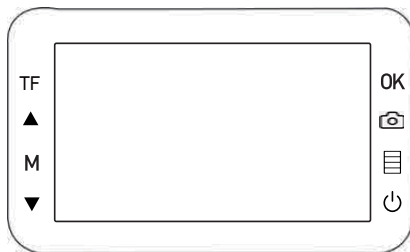
Time and Date Watermark: The time and date watermark function allows for easy identification of the recording time and date when viewing videos recorded by the dash cam, which can be helpful for documenting accidents and proving liability.

Product Overview



- 1.Rear camera AV interface
- 2.Fixed bracket interface
- 3.Power interface
- 4.Memory Card slot
- 5.Up key/ Camera button
- 6.Backspace key/Video switch key
- 7.Down key/Video lock key
- 8.Recording key/Confirm key
- 9.Video playback key
- 10.Menu key
- 11.power key/screen saver key.

Button Function Table

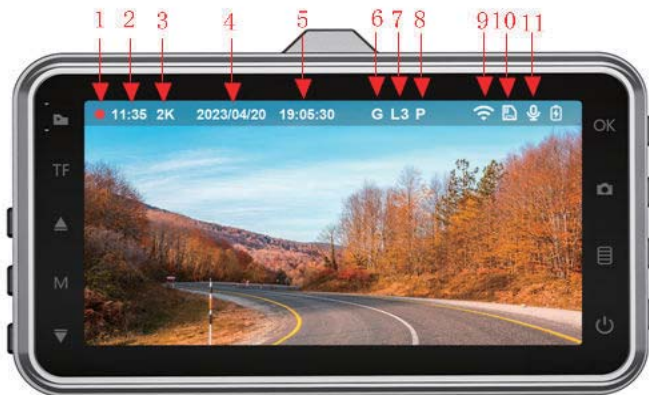


	Standby mode	Recording mode	Playback Mode
⏻ button	Display on/ off	Display on/ off	Display on/ off
📷 button	Video playback	Key locked	Key locked
M button	Perspective conversion	Perspective conversion	Backspace key
OK button	Start recording	Stop recording	video playing
▲ button	Take photo	Take photo	up key
☰ button	Menu option	Key locked	/
▼ button	/	Lock video	down key

- **Warm Tips:**
Do not adjust or operate the driving recorder during driving to avoid distracted driving and accidents.
- The driving recorder can only be used for recording the driving process and cannot be used for other purposes, such as espionage or surveillance.
- When installing the driving recorder, please make sure that it does not block the driver's line of sight or interfere with driving operations.
- When using the driving recorder, please comply with local laws, regulations, and road traffic safety rules.
- **Connecting to Power**
Use cigarette lighter to power up the device.
Connect the car charger's one end to the dash camera's USB port.
Connect the vehicle's cigarette lighter socket to the other end of the car charger. The dash camera automatically powers on and begins recording when the vehicle's engine is started.



Screen function icon



1. Video Recording

2.Timed recording

3.Resolution

4 Date

5.Time

6.G-Sensor

7 Loop Recording

8.Parking Monitor

9.Wi-Fi

10 Micro SD card

11.Audio

Product Function Table

Product Model	LF-D518
Screen Size	3 inches
Recording Resolution	Front 2K/1080P Rear 1080P
Recording Angle	Front 170° Rear 140°
Loop Recording	1Minute / 3Minutes / 5Minutes
G-Sensor	Off / Middle / High
Night Vision	Supports
Parking Monitor	Off / Middle / High
Micro SD Card Expansion	Supports maximum 128GB expansion.
Video File Format	TS
Language Support	English/Chinese/Japanese/Korean/Spanish
LAPSE	Supports(0.5S / 1S / 5S)
Audio	Open/Off
Rear Mirror	Open/Off
Preview	Front / Rear / Front+Rear
Time Zone	Supports
Installation Method	Suction cup mount / 3M adhesive mount
WIFI	Supports
Screen Saver	Off / 10S / 30S /1Min

How to install the rear camera

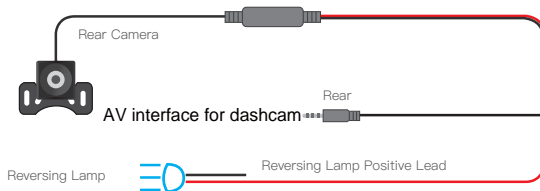
Position 1: For easy installation, install the rear camera on the rear windshield.



Position 2: Rear camera should be installed near the license plate. Position 2 is very advised. Both the rear viewing and reverse guidance images are sharp and clear. To use the reversing function— please install the rear camera in position



3If your vehicle does not have a built-in reversing system display monitor, but you want the reversing assistance function of the dashcam, you must connect the red wire of the rear camera cable to the positive lead of the vehicle's reversing lamp (12–24V). When you reverse the car, the dashcam will immediately display a full screen back image with assistant lines



FCC WARNING

This device complies with part 15 of the FCC Rules. Operation is subject to the following two conditions: (1) this device may not cause harmful interference, and (2) this device must accept any interference received, including interference that may cause undesired operation.

Any changes or modifications not expressly approved by the party responsible for compliance could void the user's authority to operate the equipment.

NOTE: This equipment has been tested and found to comply with the limits for a Class B digital device, pursuant to Part 15 of the FCC Rules. These limits are designed to provide reasonable protection against harmful interference in a residential installation. This equipment generates, uses and can radiate radio frequency energy and, if not installed and used in accordance with the instructions, may cause harmful interference to radio communications.

However, there is no guarantee that interference will not occur in a particular installation. If this equipment does cause harmful interference to radio or television reception,

which can be determined by turning the equipment off and on, the user is encouraged to try to correct the interference by one or more of the following measures:

- Reorient or relocate the receiving antenna.
- Increase the separation between the equipment and receiver.
- Connect the equipment into an outlet on a circuit different from that to which the receiver is connected.
- Consult the dealer or an experienced radio/TV technician for help.

To maintain compliance with FCC's RF Exposure guidelines, This equipment should be installed and operated with minimum 20cm distance between the radiator and your body: Use only the supplied antenna.

FAQS

Q:Is it possible to use only the dashboard camera and not install the rear camera?

A:Yes, if you only need to record video with the front camera, you just need to unplug the AV interface of the rear camera from the dash cam.

Q:What is the name of the mobile app used for WIFI? Where can I download it?

A: The name of the mobile app is "Viidure".For Android phones, you can download it from the Google Play Store, and for iPhones, you can download it from the Apple App Store.

Q: How do I view live feed when not in car? I want to be able to see when I'm at work.

A: The dash cam does not have remote connectivity function. You can only view videos by connecting your phone via WiFi or by removing the memory card and inserting it into a card reader to view on a computer.

Q: Can I view the dash cam files?

A: Yes, you can view the files on playback mode. If the files are protected, a lock mark will show on them.

Q: Can I connect the dash cam to my PC?

A:You can import the videos into your personal computer through a card reader. If the default media player cannot be used, we recommend using the POT player or KM player to watch the videos.

Q:What are the lengths of the power cords for the car charger and the rear camera?

A:The length of the power cord for the car charger is 11.5feet,and the length of the power cord for the rear camera is 20 feet.

Q:How to install rear camera?

A:There are two ways to install a rear camera.The first is to install it just above the license plate at the back of the car,which provides a clear view but is a bit difficult to install.The second is to install it in the center of the rear windshield,which is easy to install but provides a less clear view than installing it above the license plate

Q:Dash camera require a hardwired kit?

A:If you want to activate the 24-hour parking monitoring function, you needto purchase a separate hardware kit. Otherwise, it is not necessary to purchase it.

Warranty Policy for Diamond Lark Dash Cam

Thank you for choosing our dash cam. We are committed to providing high-quality products and services to our customers. This Warranty Policy outlines the terms and conditions of the 12-month warranty period for your dash cam.

Warranty Coverage:

Within 12 months from the date of purchase, if the product encounters any quality issues during normal use, our company will provide free replacement of a new product.

Contact Information: diamond-lark@outlook.com

Instant messaging contact information:

WhatsApp

