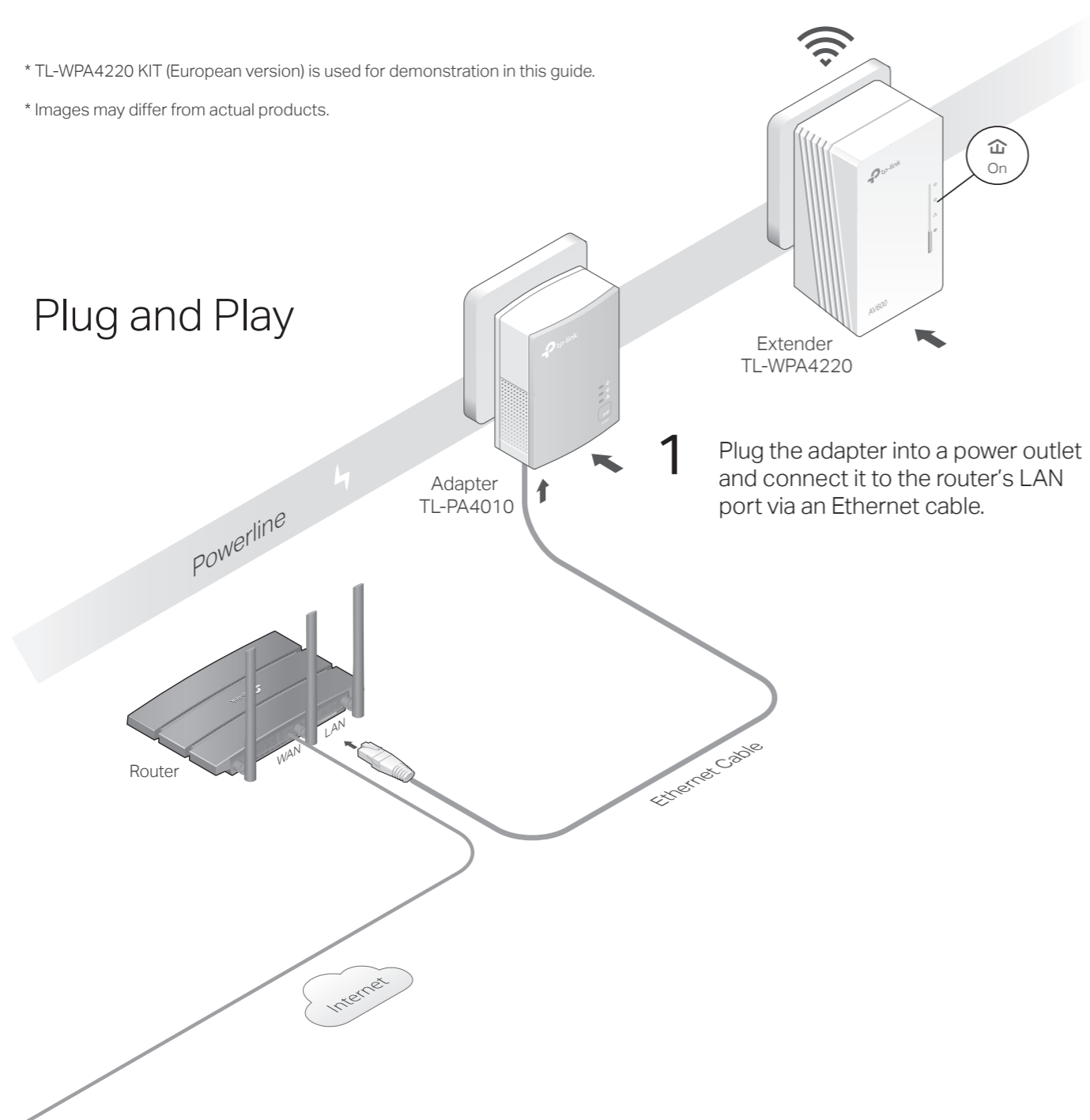


# Quick Installation Guide

\* TL-WPA4220 KIT (European version) is used for demonstration in this guide.

\* Images may differ from actual products.

## Plug and Play

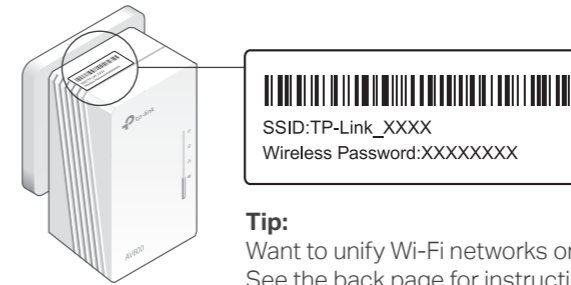


2 Plug the extender into a power outlet on the same electrical circuit. Wait until the extender's Powerline LED turns on.

Note: If the LED is blinking or off, please refer to FAQ > Q2.

3 Enjoy!

Connect your devices to the internet using the default SSID (network name) and password on the label at the top of the extender.

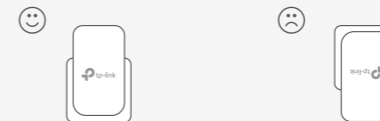


**Tip:** Want to unify Wi-Fi networks or personalize your network? See the back page for instructions.

**Note:** If you cannot find the default SSID in your Wi-Fi network list, this means that the extender has been connected to a OneMesh™ router and automatically copied its Wi-Fi settings. For more information, see **OneMesh™ with Seamless Roaming** on the back page.

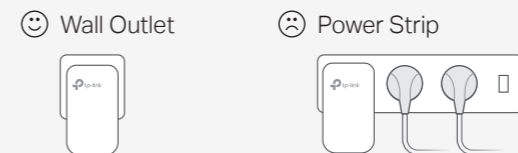
### Attention

1. Use the product only in the upright direction.



2. Plug powerline devices into wall outlets instead of power strips.



Using power strip will affect network performance or even cause connection drops.

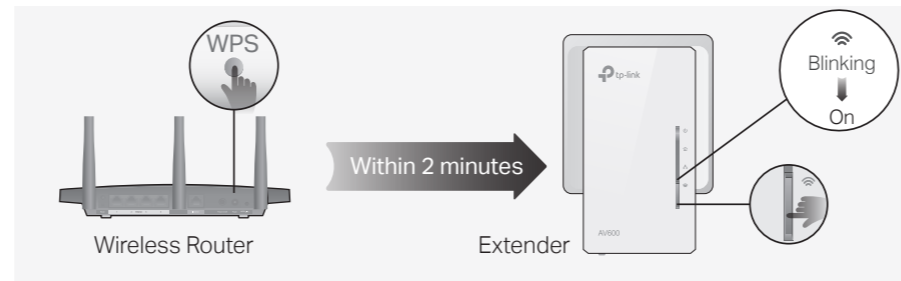


# Unify Your Wi-Fi Networks via WPS

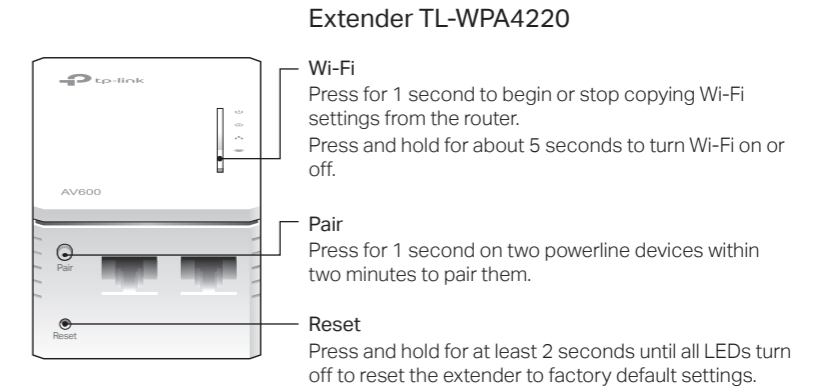
Copy SSID and password from your router via WPS to create one unified Wi-Fi network throughout your home.

**Note:** If your router doesn't have a WPS button, manually change the extender's Wi-Fi settings via the tpPLC app, tpPLC Utility, or web interface.

- 1 Plug in the extender in the same room as your router. Wait until the extender's Wi-Fi LED  turns on.
- 2 Press your router's WPS button. Within 2 minutes, press the extender's Wi-Fi button for 1 second. The extender's Wi-Fi LED  starts blinking. When it stays on, Wi-Fi settings are copied.  
**Note:** If Wi-Fi settings are not copied within 2 minutes, manually change the extender's Wi-Fi settings.
- 3 Relocate the extender and enjoy the internet using your router's SSID and password.





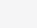
# Button Legend

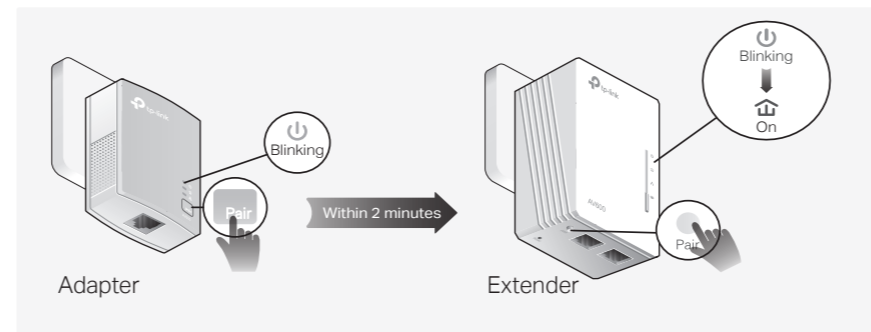


# Create a Secure Powerline Network by Pairing

**Note:** You can only pair two devices at a time. We recommend that you plug in the powerline devices near each other when pairing.

## Pair the Powerline Devices

- 1 Press the Pair button on the adapter for 1 second. Its Power LED  starts blinking.  
**Note:** If the Power LED does not blink, press the Pair button again.
- 2 Within 2 minutes, press the extender's Pair button for 1 second. Its Power LED  starts blinking.
- 3 When the extender's Powerline LED  turns on, the pairing process is complete.






## Sync Wi-Fi Settings to More Extenders

If you have more extenders, simply plug in and pair each one with the existing adapter to join the network. Then the Wi-Fi settings will automatically sync from the existing extender to the new ones.

# OneMesh™ with Seamless Roaming

TP-Link OneMesh router and extenders work together to form one unified Wi-Fi network. Walk through your home and stay connected with the fastest possible speeds thanks to OneMesh's seamless coverage.

-  **Unified Wi-Fi Network**  
Router and extenders share the same wireless settings, including network name, password, access control settings and more.
-  **Seamless Roaming**  
Devices automatically switch between your router and extenders as you move through your home for the fastest possible speeds.
-  **Easy Setup and Management**  
Set up a OneMesh network with a push of WPS buttons. Manage all network devices on the Tether app or at your router's web management page.

To check full list of TP-Link OneMesh devices, scan the QR code, or visit <https://www.tp-link.com/One-Mesh/compatibility>.



# Personalize Your Network

## tpPLC App

For easy management via your smartphone or tablet, download the app from the App Store or Google Play, or simply scan the QR code.



Scan to download tpPLC App

## tpPLC Utility

For easy management via your computer, download the utility on the product's Support page at <https://www.tp-link.com>.

**Note:** For detailed instructions, refer to the utility manual on the product's Support page.

## Web Interface

To access all settings, connect to an extender wirelessly and visit <http://tplinkplc.net>.

**Note:** For detailed instructions, refer to the product manual on the product's Support page.

# Frequently Asked Questions

## Q1. How do I reset my extender to factory default settings?

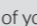
A. With the extender plugged into an electrical outlet, press and hold the Reset button until all LEDs turn off. When the LEDs turn back on, the reset process is complete.

## Q2. What should I do if the Powerline LED is blinking or off?

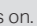
- If the LED is blinking:
  - A. The powerline device is in a location with a poor signal strength. Try another wall socket.
- If the LED is off:


- A1. Try another wall socket and make sure all powerline devices are on the same electrical circuit.
- A2. Try to set up a powerline network by pairing. Refer to the section above for instructions.
- A3. If the problem persists, contact our Technical Support.

## Q3. What should I do if there is no internet connection in my powerline network?

- A1. Make sure all powerline adapters and extenders are on the same electrical circuit.
- A2. Make sure the Powerline LEDs  are lit on all of your powerline devices. If they are not, pair all devices again.
- A3. Make sure all devices are correctly and securely connected.
- A4. Check if you have an internet connection by connecting the computer directly to the modem or router.

## Q4. What should I do if a successfully-paired extender does not reconnect after it is relocated?

- A1. Make sure all powerline adapters and extenders are on the same electrical circuit.
- A2. Try to pair the extender again, and make sure the Powerline LED  is on.
- A3. Check for possible interference due to a washing machine, air conditioner or other household appliances that may be too close to one of the powerline devices. Plug the appliance into the integrated electrical socket to remove the electrical noise if your powerline device has an integrated electrical socket.

 For technical support, the user guide and more information, please visit <https://www.tp-link.com/support/>, or simply scan the QR code.



TP-Link hereby declares that the device is in compliance with the essential requirements and other relevant provisions of directives 2014/53/EU, 2009/125/EC, 2011/65/EU and (EU)2015/863. The original EU declaration of conformity may be found at <https://www.tp-link.com/en/ce>.

## Safety Information

- Keep the device away from water, fire, humidity or hot environments.
- Do not attempt to disassemble, repair, or modify the device.
- Do not use the device where wireless devices are not allowed.
- The socket-outlet shall be installed near the equipment and shall be easily accessible.
- Plug the powerline devices directly into the wall outlets but not the power strips.