

Job Name

Purchaser

Submitted to

Unit Designation

Location

Engineer

Reference

Approval

Construction

Schedule #

Specifications			
Model	Indoor Unit Model Number (US Code)		AC009BNLDC/AA (CNH09LDB)
	Outdoor Unit Model Number (US Code)		AC009BXADCH/AA (CXH09ADB)
Performance	Nominal Capacity	Cooling / Heating (Btu/h)	9,000 / 12,000
	Capacity Range	Cooling (Btu/h)	3,000 - 13,000
		Heating (Btu/h)	2,900 - 16,000
	AHRI 210-240 2017 <sup>1</sup>	SEER	21.1
		EER	14.0
		HSPF	11.30
	AHRI 210-240 2023 <sup>2</sup>	SEER2	21.8
EER2		14.0	
HSPF2		9.9	
Power	Voltage	ø V / Hz	1 / 208-230 / 60
	Working Voltage Range (VAC)		187 - 253
	Operating Current (min. / std. / max.)	Cooling (A)	1.2 / 3.3 / 5.9
		Heating (A)	1.1 / 4.7 / 9.0
	Max. Breaker	Amps	15
Min. Circuit Ampacity (A)	10.9		
Dimensions	W X H X D (in.)	Indoor Unit	35 7/16 X 7 13/16 X 17 5/16
		Outdoor Unit	31 1/8 X 21 9/16 X 11 1/4
	Weight (lbs.)	Indoor Unit	41.7
		Outdoor Unit	74.3
	Duct Connections (W X H)	Supply (in.)	29 3/16 X 5 15/16
	Return (ID, in.)	30 5/8 X 6 5/8 (inside)	
Sound Pressure Level	Indoor Unit dB(A)	L / M / H	26 / 30 / 33
	Outdoor Unit dB(A)	Cooling / Heating (high)	46 / 47
Operating Temperatures	Outdoor	Cooling	23 ~ 122°F (-5 ~ 50°C)
			0 ~ 122°F (-18 ~ 50°C) W/Baffle
		Heating	-13 ~ 75°F (-25 ~ 24°C)
	Indoor	Cooling	62 ~ 90°F (16 ~ 32°C)
		Heating	T ≤ 86°F (30°C)
Pipe Connections	Indoor & Outdoor	High side	1/4"
		Low side	3/8"
	Maximum (ft.)		65.6
	Maximum Vertical Separation (ft.)		49.2
Condensate Connection (with included adapter)		1 1/4 in. OD, 1 in. ID	
Refrigerant	Type		R410A
	Factory Charge	lbs.	2.54
	Charged for		24.6 ft.
Compressor	Manufacturer		Samsung
	Type		Inverter Driven, Twin BLDC Rotary
	RLA	Amps	6
Evaporator Fan	Type		BLDC (1) With Sirocco Fan (2)
	Air Volume	CFM (L/M/H)	194 / 230 / 283
	Output	Watts	84
	External Static Pressure	Standard ("WC)	0.1
Min. / Max. ("WC)		0.0 / 0.24	
Condenser Fan	Motor		BLDC With Axial Type Fan (1)
	FLA / Watts / CFM (max.)		0.42A X 1 / 40W X 1 / 1,060 CFM
Safety	Certifications	UL 60335-2-40	
	Devices	PCB fuses, indoor unit terminal block thermal fuse, current transformer, over-voltage protection, crankcase heating, temperature limit protection logic, compressor overload sensing	



- General Information
- The outdoor unit shall supply power to indoor unit via 14 AWG X 3 power wire
  - High-voltage terminal block temperature sensor to disable unit in the event of power connection overheating
  - Integral condensate pump with maximum 29" lift from bottom of the unit with check valve and float switch that disables indoor should condensate overflow be detected.
  - Auto-restart after power loss
  - Soft-start compressor minimizing current inrush
  - All heat exchangers shall be mechanically bonded aluminum fin to copper tube
  - The condensing unit heat exchanger salt spray test method: ISO-9227 - the heat exchanger showed no unusual rust or corrosion development to 500 hours.
  - Base pan heater equipped as standard
- Option settings
- The outdoor unit shall have snow accumulation prevention option setting to prevent snow drifting against an idle outdoor unit.
  - Night-time Quiet Mode: reduction of operational sound during evening hours (*automatic or manual activation*).
  - Emergency Temperature Output (ETO) function: when indoor unit is in error status or when room temperature exceeds configurable temperature level, the system outputs a signal to an external source, e.g., backup system, building management system, alert device (ex: status light, warning lamp, buzzer).
  - System can be set up as heating/cooling, cooling only, or heating only via outdoor unit option setting.
  - Maximum Current Control configurable from 50% - 100% via outdoor unit, wired controller or central control

- Indoor Fan
- Indoor fan is sirocco type
  - Three fan speed settings and auto setting
  - Washable filter as standard

- Construction
- Outdoor unit shall be galvanized steel with a baked-on powder coated finish for durability
  - Indoor Unit: Insulated, galvanized steel.

- Controls
- Control wiring shall be 2 X 16 AWG wire
  - No additional interface modules/adapters are required when connecting to Samsung central control options.
  - The unit shall be operated via a wireless or wired remote control with DDC type signal
  - Dual set temperature support when connected to MWR-WG00UN Advanced Wired Controller or central control options.
  - Wired or wireless controllers must be purchased separately

- Refrigerant System
- The compressor shall be hermetically sealed, inverter-controlled BLDC rotary type.
  - Refrigerant flow shall be controlled by an electronic expansion valve at outdoor unit

Warranty

10 Years compressor, 10 years parts, 1 year limited labor when registered

ATTENTION

This air handling unit is intended for free-air discharge or for connection to a duct supplying only one room. Improper installation could contribute to the spread of smoke or flame in the event of a fire.

This publication reflects both the 1987 Appendix M metric (SEER) and the 2023 Appendix M1 metric (SEER2). Efficiency requirements are published at 10 C.F.R. 430.32(c). Please refer to [www.AHRInet.org](http://www.AHRInet.org) for more information about updated energy metrics.

<sup>1</sup>Performance data certified by AHRI to AHRI 210-240 (2017) with Addendum 1.  
<sup>2</sup>Performance data certified by AHRI to AHRI 210-240 (2023). Effective January 1st, 2023.

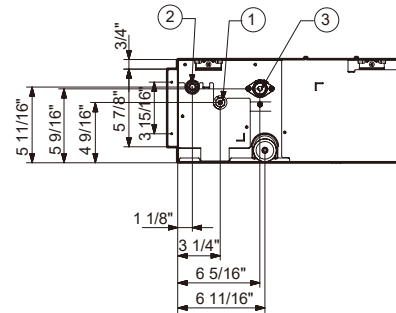
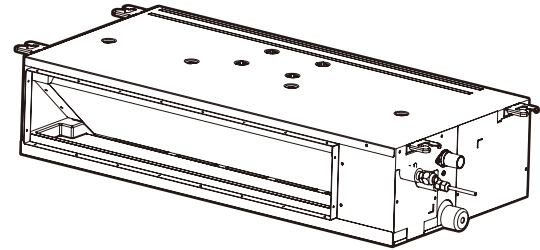
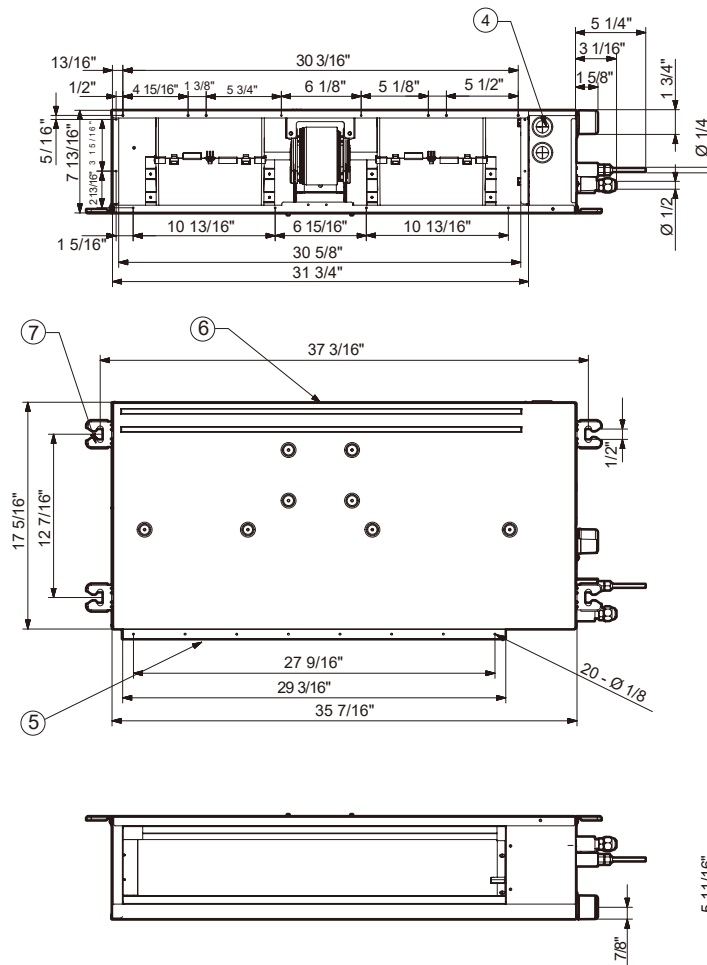
Samsung HVAC maintains a policy of ongoing development, specifications are subject to change without notice. Refer to [www.AHRIdirectory.org](http://www.AHRIdirectory.org) for current reference numbers.

Select models are ENERGY STAR labeled. Proper sizing and installation of equipment is critical to achieve optimal performance. Split system air conditioners and heat pumps (excluding ductless systems) must be matched with appropriate coil components to meet ENERGY STAR criteria. Ask your contractor for details or visit [www.energystar.gov](http://www.energystar.gov).

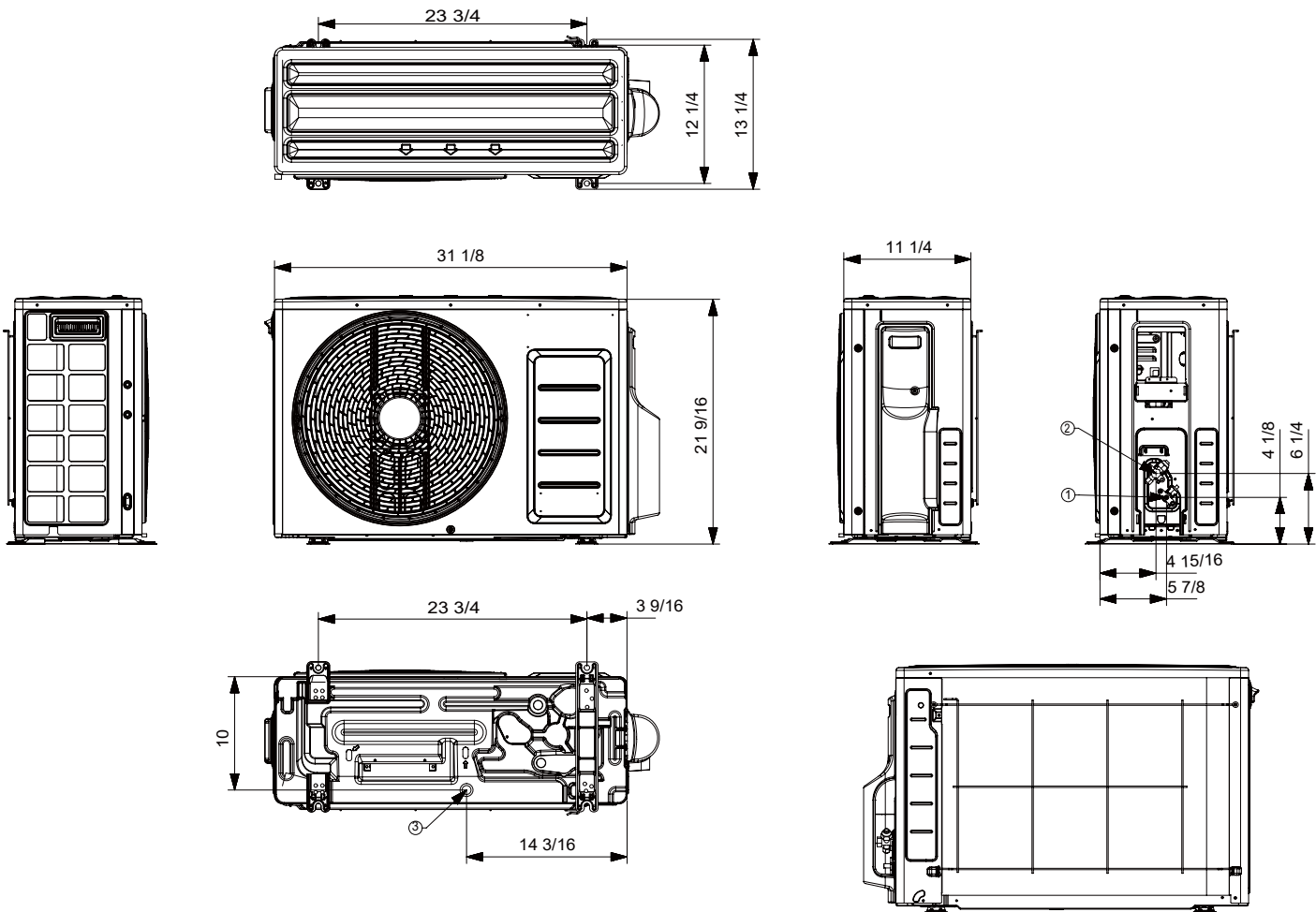


Optional Accessories

Wired Controller	Advanced	MWR-WG00UN
	Touchscreen	MWR-SH11UN
Thermostat Adaptor (for connection to a standard 24VAC thermostat)		MIM-A60UN
Wireless Signal	Wireless Signal Receiver	MRK-A10N
Control	Wireless Controller	AR-EH04U
Wi-Fi Adapter		MIM-H05UN
External Temperature Sensor		MRW-TA
Filter Box		FB-SLIM2
External Contact Control		MIM-B14
Wall Bracket (for outdoor unit)		CKN-250
Wind Baffles	Front	WBF-3M
	Back	WBB-5M
Hail Guard Kit (includes back and side guards)		HGK-1
Line Sets - insulated and flared, interconnect cables included	25' - ILS-2506	
	50' - ILS-5006	



No.	Name	Description
①	Refrigerant Liquid Pipe	Ø 1/4"
②	Refrigerant Gas Pipe	Ø 3/8"
③	Condensate Drain	3/4" (OD 1.05")
④	Power & Comm. Wiring Conduits	-
⑤	Supply Air Flange	-
⑥	Return Air Flange	-
⑦	Hook	-



No.	Name	Description
1	Refrigerant liquid pipe	Ø 1/4
2	Refrigerant gas pipe	Ø 3/8
3	Drain hole	Connect with provided drain plug