

HEATSTRIP™

ELECTRIC RADIANT OUTDOOR / INDOOR HEATER



INSTALLATION, OPERATION & MAINTENANCE MANUAL

IMPORTANT INSTRUCTIONS SAVE THESE INSTRUCTIONS

Prior to installing and operating the heater, read these instructions carefully and retain for future reference.

INTRODUCTION

The HEATSTRIP product range offers an elegant solution for both indoor and outdoor heating requirements.

Casing options include powder coat finish and stainless steel. (Stainless steel model is recommended in coastal areas.)

All HEATSTRIP products have an IPX5 rating for protection against water ingress and are suitable for undercover outdoor installation.

MODEL CODES

model	watts	rating	branch circuit	dimensions	weight
THH1500US / THH1500US-SS	1500	120V	15A	33 ½ x 7 ¾ x 1 ¾	12.0lbs
THH2400US / THH2400US-SS	2400	240V	15A	52 ½ x 7 ¾ x 1 ¾	17.0lbs
THH3200US / THH3200US-SS	3200	240V	20A	69 ¾ x 7 ¾ x 1 ¾	22.0lbs

MODEL CODE NOTES

SS Denotes stainless steel casing.

UL / CSA APPROVAL E321448

CAUTION

When using electrical appliances, basic preparations should always be followed to reduce the risk of fire, electric shock, and injury to persons, including the following:

- Read all instructions before using the heater.
- This heater is hot when in use. To avoid burns, do not let bare skin touch hot surfaces. Keep combustible materials, such as furniture, pillows, bedding, papers, clothes and curtains at least 39" (1000mm) from the front of the heater and keep them away from the sides and rear.
- Do not touch any part of the heater while it is turned on or for 30 minutes after it is turned off.
- Extreme caution is necessary when any heater is used by or near children or invalids and whenever the heater is left operating and unattended.
- Do not operate any heater after the heater malfunctions, or has been dropped or damaged in any manner. Return heater to an authorised service facility for examination, electrical or mechanical adjustment, or repair.
- This heater is not intended for use in bathrooms, laundry areas and similar indoor locations. Never locate heater where it may fall into a bathtub or other water container; for example pool or spa.
- The heater is fitted with an electrical connection box and should be connected as a fixed installation by a licensed electrical professional in accordance with the relevant electrical code.
- The heater is required to be fitted with an "ON/OFF" isolation switch and can also be controlled via thermostat, timer or dimmer type control. A wall switch should be installed on fixed wire installations. The heater should also be connected via an R.C.D. (Residual Current Device).
- Do not insert or allow foreign objects to enter any ventilation or exhaust opening as this may cause an electric shock or fire, or damage the heater.
- To prevent a possible fire, do not block air intakes or exhaust in any manner.
- A heater has hot and arcing or sparking parts inside. Do not use it in areas where gasoline, paint, or flammable liquids are used or stored.
- Use this heater only as described in the manual. Any other use not recommended by the manufacturer may cause fire, electric shock, or injury to persons.
- Save these instructions.

INSTALLATION – PREPARATION

The HEATSTRIP product is a high intensity radiant heater designed for domestic and commercial heating applications within indoor and undercover outdoor areas, and should not be used for any other purpose.

Before commencing installation, make sure the electrical supply voltage is the same as that shown on the rating plate of the heater.

The heater is fitted with an electrical connection box and should be connected as a fixed installation by a licensed electrical professional according to the relevant electrical code.

This appliance must be earthed.

The heater is required to be fitted with an "ON/OFF" isolation switch and can also be controlled via thermostat, timer or dimmer type control. A wall switch should be installed on fixed wire installations. The heater should also be connected via an R.C.D. (Residual Current Device).

In case of heater fault, the appliance should be returned to the distributor/manufacturer or and authorised service specialist for repair.

INSTALLATION – LOCATION

For both wall and ceiling mounting, the lower part of the heater must be located a minimum of 96" (2400mm) above floor level.

Within an outdoor undercover location, the recommended most effective mounting height for performance and comfort is between 96" (2400mm) and 106" (2700mm).
Recommended maximum effective mounting height – 122" (3100mm).

For further information refer to www.heatstrip.com.au

The heater should have a clearance of 39" (1000mm) to adjacent walls, a minimum 4" (100mm) clearance from back of heater to any mounting surface and a minimum clearance of 39" (1000mm) or more from bottom of heater to any surface below.

The heater should have a minimum clearance of 12" (300mm) from the ceiling to the back of the heater, when wall mounted at an angle.

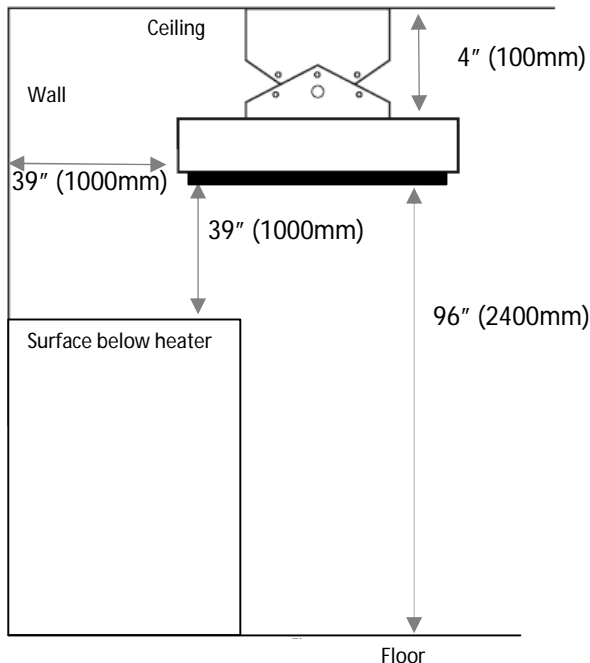
The heater must not be mounted immediately below or in front of a socket outlet.

If installed in wet areas, the heater switches or controls must be located so they cannot be touched by persons in the bath or shower.

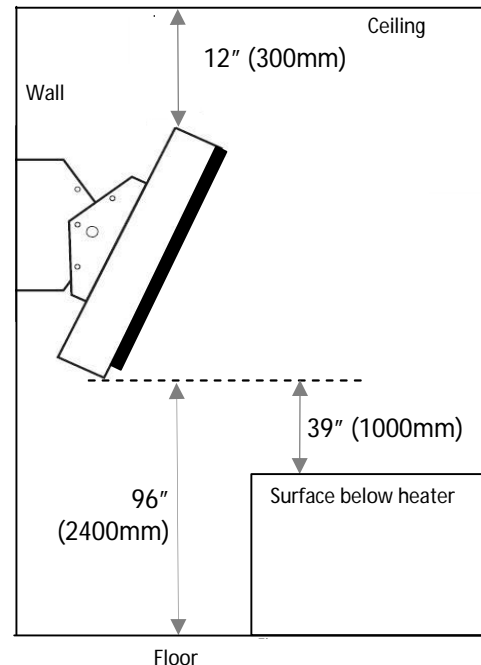
Do not allow thermal insulation, cables, flammable materials or any other items to come in contact with any surface of the heater (purpose designed brackets excluded).

MINIMAL CLEARANCES

Horizontal Ceiling mounting

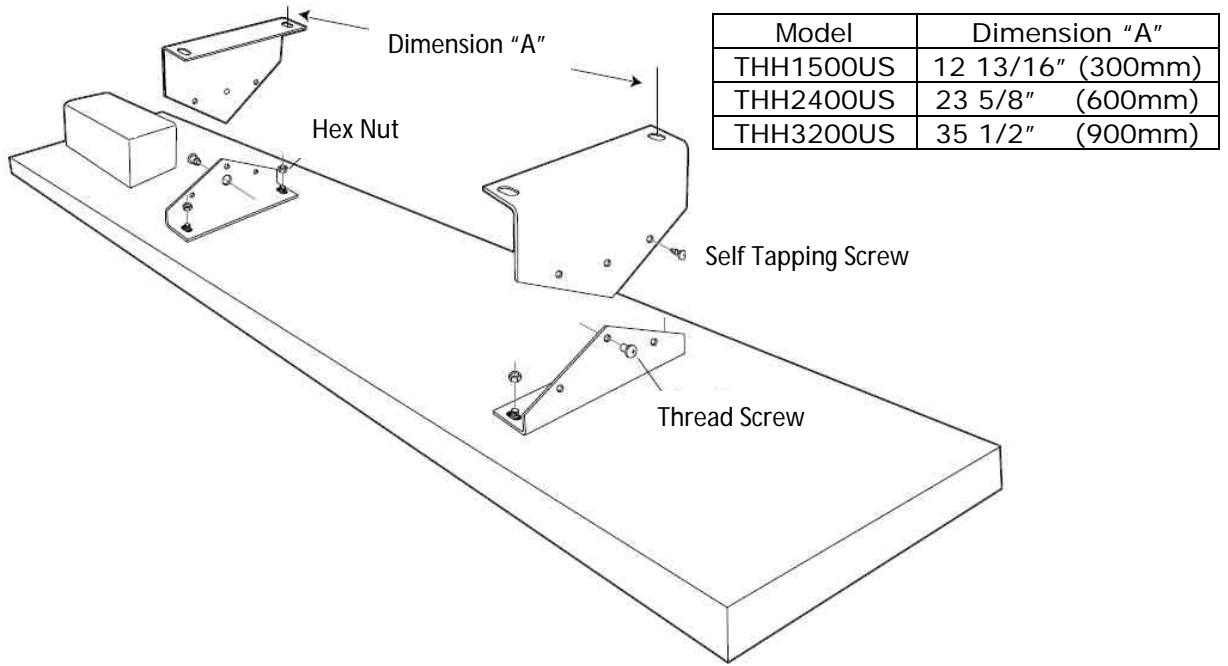


Angled Wall mounting



INSTALLATION - MOUNTING

1. Fix the two ceiling brackets to the ceiling or wall in the desired location, ensuring that the fixing method (bolts or screws) will be more than strong enough to support the weight of the heater and allow for strong winds and other conditions. Note the two fixing brackets face inwards.



2. Secure the two small brackets to the heater using the nuts provided. Make sure the brackets face inwards.
3. Lift the heater up to the ceiling brackets and secure the top and bottom brackets using the screws provided.
4. Use the self tapping screws to lock the top and bottom brackets in either horizontal or angle mounting position.

INSTALLATION – WIRING CONNECTION

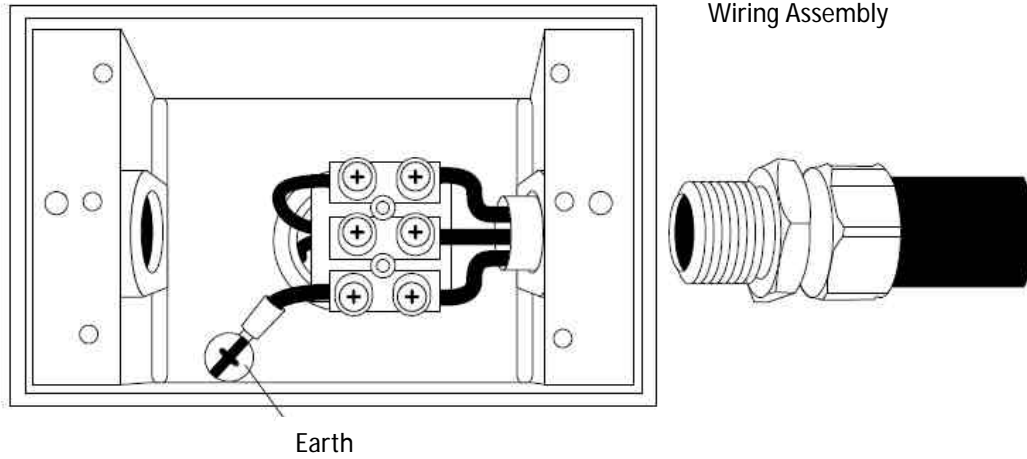
For supply connections, use wires suitable for at least 90°C or equivalent.

Connect the earth, active and neutral wires to the connector block in the junction box mounted on the heater. Make sure the earth cable is connected to the earth location on the connector block.

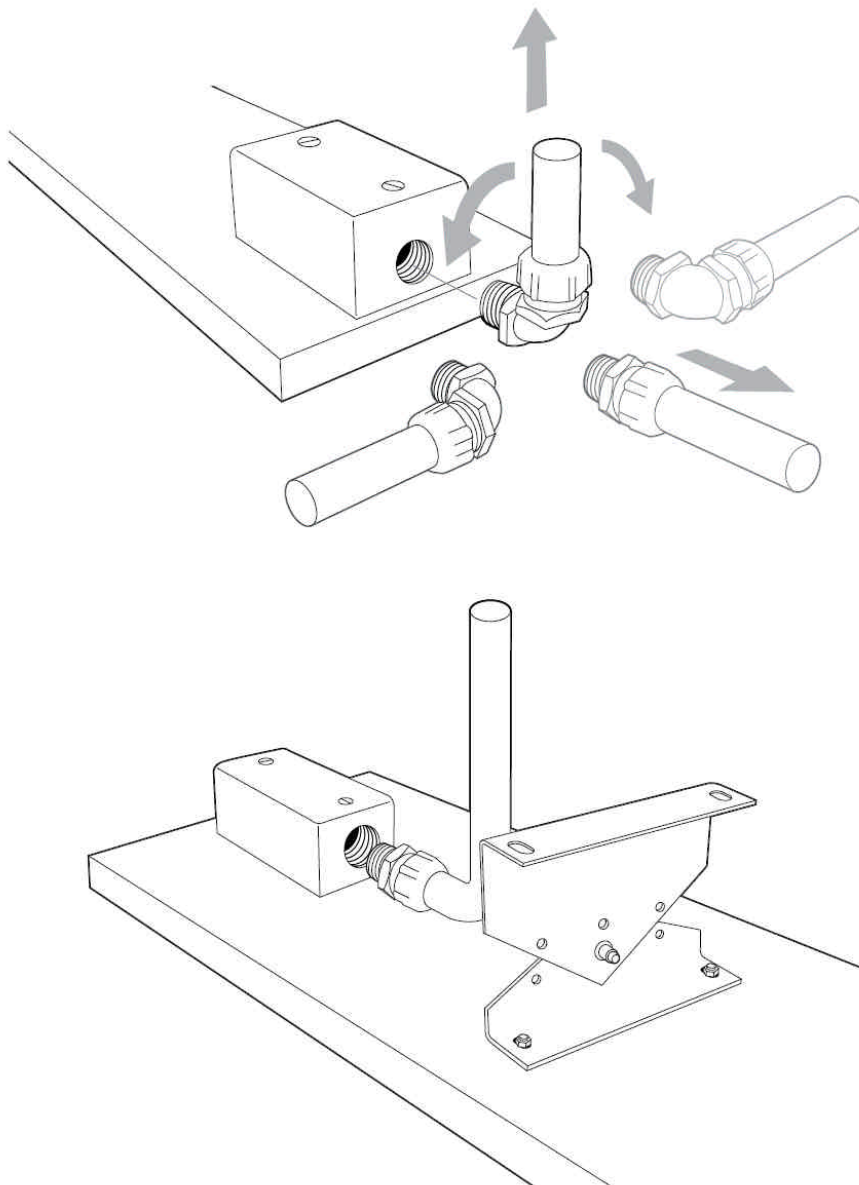
½ inch flexible conduit should be connected to the junction block. In outdoor applications the conduit must be suitable for outdoor use.

Test the complete electrical installation prior to fixing the top on the connector block.

All electrical wiring and connections should comply with relevant local and national electrical standards and codes.



Options for connecting ½ inch flexible conduit:



OPERATING INSTRUCTIONS

The heater is required to be fitted with an "ON/OFF" isolation switch and can be also controlled via thermostat, timer or dimmer type control.

Once the unit is turned ON via a switch or other control device, it will take approximately 15 minutes to warm up to normal operating temperature.

Make sure the unit is turned OFF after use.

MAINTAINING & CLEANING

It is important that HEATSTRIP units installed in outdoor locations are regularly cleaned to ensure long and efficient operating life. It is also a condition of the warranty that the heater must be cleaned and maintained on a regular basis.

As a guide, the heater should be cleaned as often as windows or outdoor furniture requires cleaning in the same area. In coastal areas an additional rinsing on a weekly basis with a light spray from a hose will provide extra protection.

HEATSTRIP units should be cleaned and inspected every 3 months.

In coastal locations in particular, salt in the air can cause rusting and staining of metal (including stainless steel).

Even in city locations, pollution in the air can contaminate surfaces and will affect the ability of the coatings and materials of the HEATSTRIP to resist rust and stains. This applies to both the painted and stainless steel models.

As the HEATSTRIP has a protection rating for water ingress of IPX5, it can be safely washed and cleaned with water.

The heater can be lightly sprayed with a hose, but the preferred method of cleaning is to rinse the heater, using a soft cloth and warm water with mild detergent. Ensure any soap residue is rinsed off after cleaning.

If the heater is removed from mounting brackets, it should be stored in an undercover dry location.

IMPORTANT MAINTENANCE & CLEANING NOTES

Do not use any abrasive materials or products to clean the heater.

Before any cleaning or inspection activity, the heater must be switched off and cooled down completely.

After cleaning, turn on the heater for 20 minutes to dry any residue water.

When cleaning the heater, always inspect the back of the heater for build-up of insects, bird droppings, dust, salt build-up, etc. and clean back thoroughly.

Always inspect the heater after high winds, earthquake, vandalism or any other unusual event that may have affected the heater.

Do not use a high pressure hose or high pressure water equipment to clean heaters, light water spray only.

The heater casing and other surfaces may become discoloured or stained when located in areas where cigarette smoke, oil lamps, incense, cooking appliance, etc are present.

In this case, additional cleaning and maintenance may be required to keep the appliance in good appearance and condition.

PRODUCT WARRANTY

Thermofilm warrants to the original owner that HEATSTRIP products will be free from defects in materials and workmanship for a period of 12 months from date of purchase in accordance with the following warranty terms and conditions.

The HEATSTRIP product must be installed in accordance to the installation instructions and relevant electrical standards and codes.

The HEATSTRIP product must be maintained and cleaned according to instructions detailed in the Installation, Operation and Maintenance Manual.

Provision of the Warranty is subject to:

- The customer has not repaired or altered the product in any unauthorised manner.
- Thermofilm obligation under this warranty is limited to repair or replacement at Thermofilm's factory of any components of the product which Thermofilm identifies to its satisfaction to be defective.
- Transportation charges involved in return of the product to the Thermofilm factory (or any other location authorised in writing by Thermofilm) is the sole responsibility of the customer.
- Thermofilm does not participate in any site related costs or labour expenses incidental to replacement of parts, repairing, removing, installing, servicing, transportation or handling of parts or complete products, and assumes no liability on parts repaired or replaced without written authorisation.
- All warranty requests for repairs or replacements must be accompanied by a completed "Warranty Claim Form" available from Thermofilm, together with proof of purchase (and wherever possible, photos of the installation).
- No product or components will be supplied in advance of an examination of the faulty product or components by Thermofilm or an authorised representative of Thermofilm.
- There is no warranty expressed or implied with regard to capacity requirements. The selection of the unit or units depends entirely upon the system design and capacities as determined by the purchaser.
- The warranty excludes damage to the product or components arising from circumstances outside the control of Thermofilm, including, without limitation, where the product is not used for intended purpose, where the product has been rectified in any way, incorrect installation, incorrect power supply, damaged caused during delivery, misapplication, misuse, abuse, vandalism, lack of maintenance or accident.
- Thermofilm shall not be liable for any default or delay in performance of its warranty obligations caused by any circumstances beyond its control, including, without limitation, judicial or government restrictions, strikes, fires, floods, abnormal weather conditions, delayed supplies of components.

- All products are inspected and tested before despatch and are at the risk of the purchaser after shipment from the Thermofilm factory, if not delivered by Thermofilm to destination.
- Should products be determined as damaged on arrival, immediately notify the transport company of the condition and have them noted on the freight documents. If damage is discovered after unpacking, demand immediate inspection by the transportation company and insist that a record of the damage is made on the freight documentation.

The Customer warrants to use the product in accordance with:

- Any instructions provided to it by Thermofilm from time to time.
- All government and local regulations, including, but not limited to all relevant electrical, environmental laws and regulations governing the installation, storage use, handling and maintenance of the goods.

All necessary and appropriate precautions and safety measures relating to the installation, storage, use, handling and maintenance of goods