

UniFlood M G2

BVP353 72LED RGBNW 220V L57 15 DMX

7890 lm – 150 W K

Philips UniFlood M gen2 is a cost-effective, exterior-rated architectural LED floodlight that's designed for facade, landscape and outdoor flood lighting applications. The robust, modular, rectangular design features highly efficient optics, making it ideal for illuminating everything from multi-storey facades and bridges to landmarks and monuments. ;This LED floodlight is available in white, monochromatic colours, RGB, RGBW and tunable white.It comes with six different spread lenses ranging from narrow spot to wide flood and has DMX512/RDM control option. A truly modular floodlight that gives architects and designers the freedom to explore a wide range of concepts and designs with no limitations.

Warnings and Safety

- For outdoor use only.

Product data

General information		Operating and electrical	
Lamp colour code	RGBW	Input Voltage	220 to 240 V
Driver included	Yes	Input frequency	50 to 60 Hz
Optical cover/lens type	GC [Clear glass]	Inrush current	60 A
Control interface	Dynamic DMX/RDM	Power factor (min.)	0.95
Connection	Flying leads/wires and 2 push-in connectors 4-pole	Controls and dimming	
Cable	Cable 0.5 m without plug 3-pole and 2 cables 0.5 m with connector 4-pole	Dimmable	Yes
Protection class IEC	Safety class I (I)	Mechanical and housing	
Flammability mark	F [For mounting on normally flammable surfaces]	Housing material	Aluminum extruded
CE mark	CE mark	Optical cover/lens material	Acrylate
		Overall length	569 mm

UniFlood M G2

Overall width	140 mm
Overall height	149 mm
Effective projected area	0.078 m²
Colour	Dark Grey

Approval and application

Ingress protection code	IP66 [Dust penetration-protected, jet-proof]
Mech. impact protection code	IK06 [1 J]

Initial performance (IEC compliant)

Initial luminous flux (system flux)	7890 lm
Luminous flux tolerance	+/-10%
Initial LED luminaire efficacy	53 lm/W
Lamp colour temperature	- K
Colour Rendering Index	>80
Initial input power	150 W
Power consumption tolerance	+/-10%

Application conditions

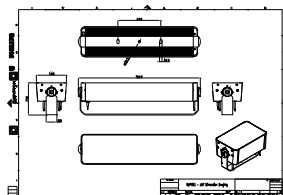
Ambient temperature range	-40 to +50 °C
---------------------------	---------------

Product data

Full product code	871951492768199
Order product name	BVP353 72LED RGBNW 220V L57 15 DMX
EAN/UPC – product	8719514927681
Order code	911401748473
SAP numerator – quantity per pack	1
Numerator – packs per outer box	2
SAP material	911401748473
Net Weight (Piece)	6.800 kg



Dimensional drawing



BVP353 72LED RGBNW 220V L57 15 DMX

