

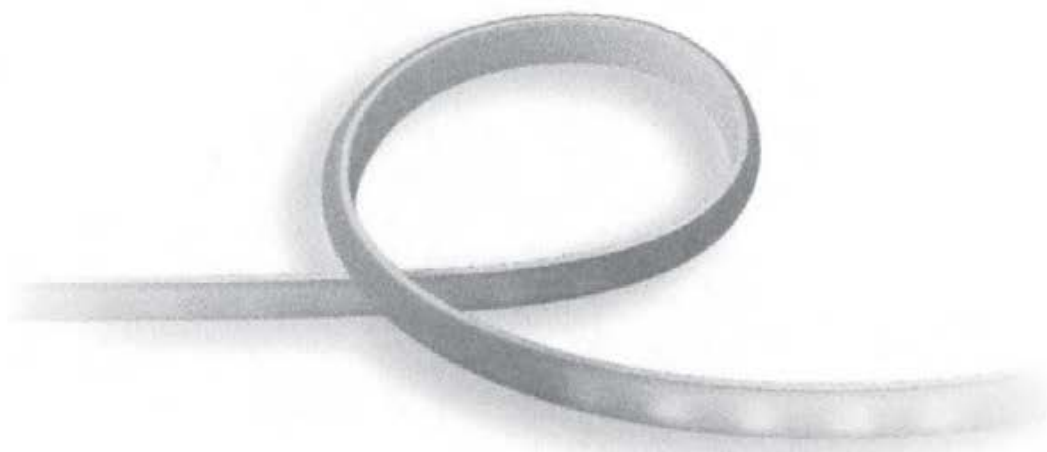
PHILIPS

hue personal
wireless
lighting

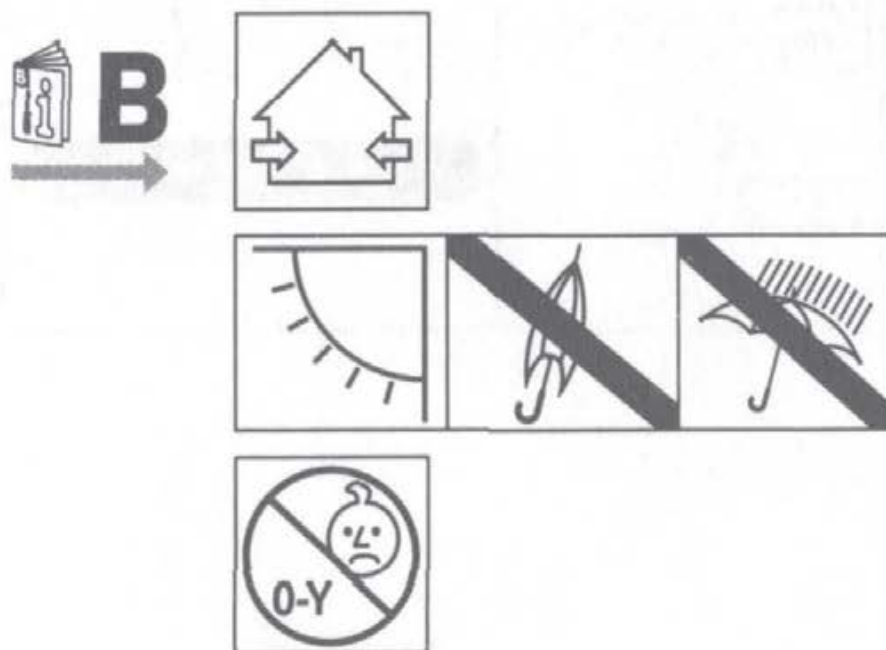
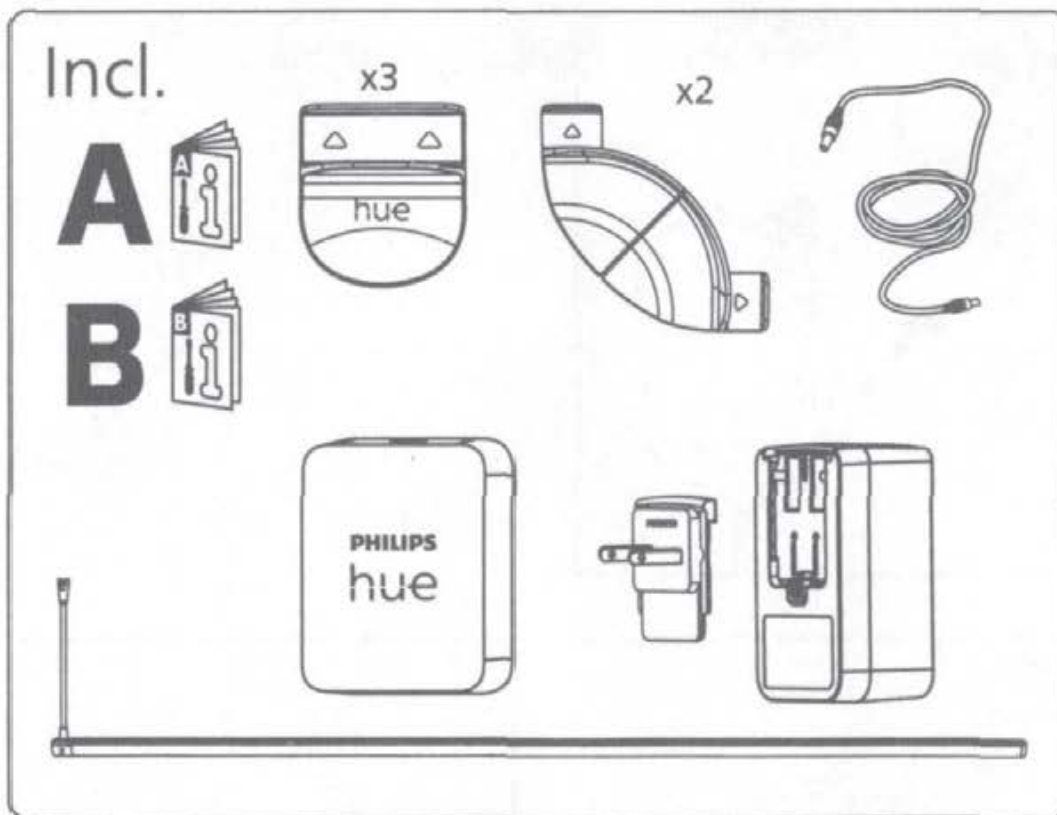
Lightstrip 24" / 27"
monitor écran
24 po / 27 po

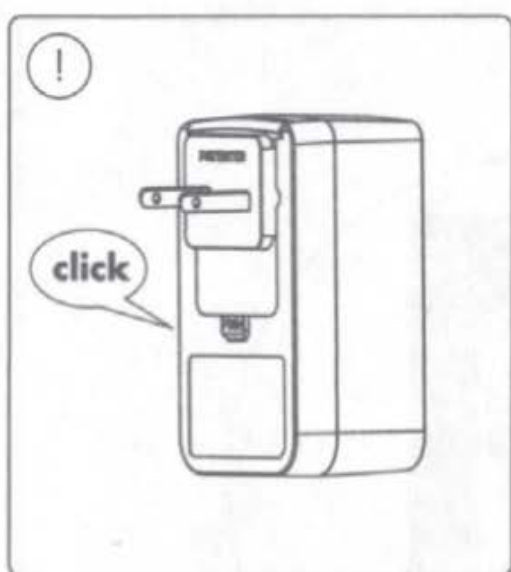
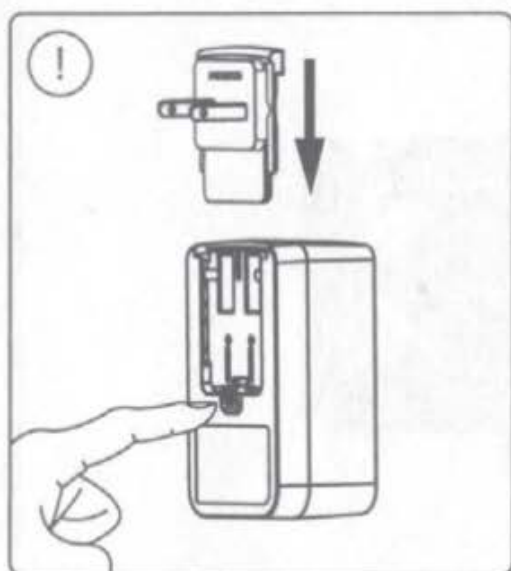


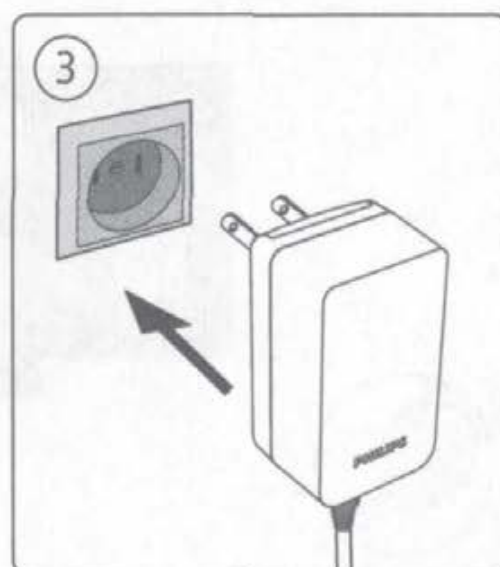
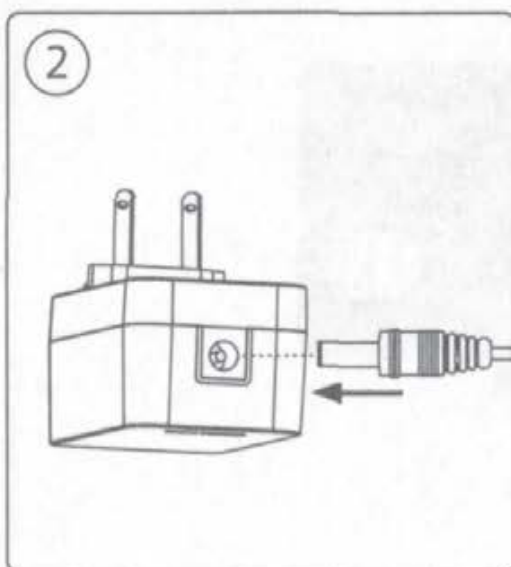
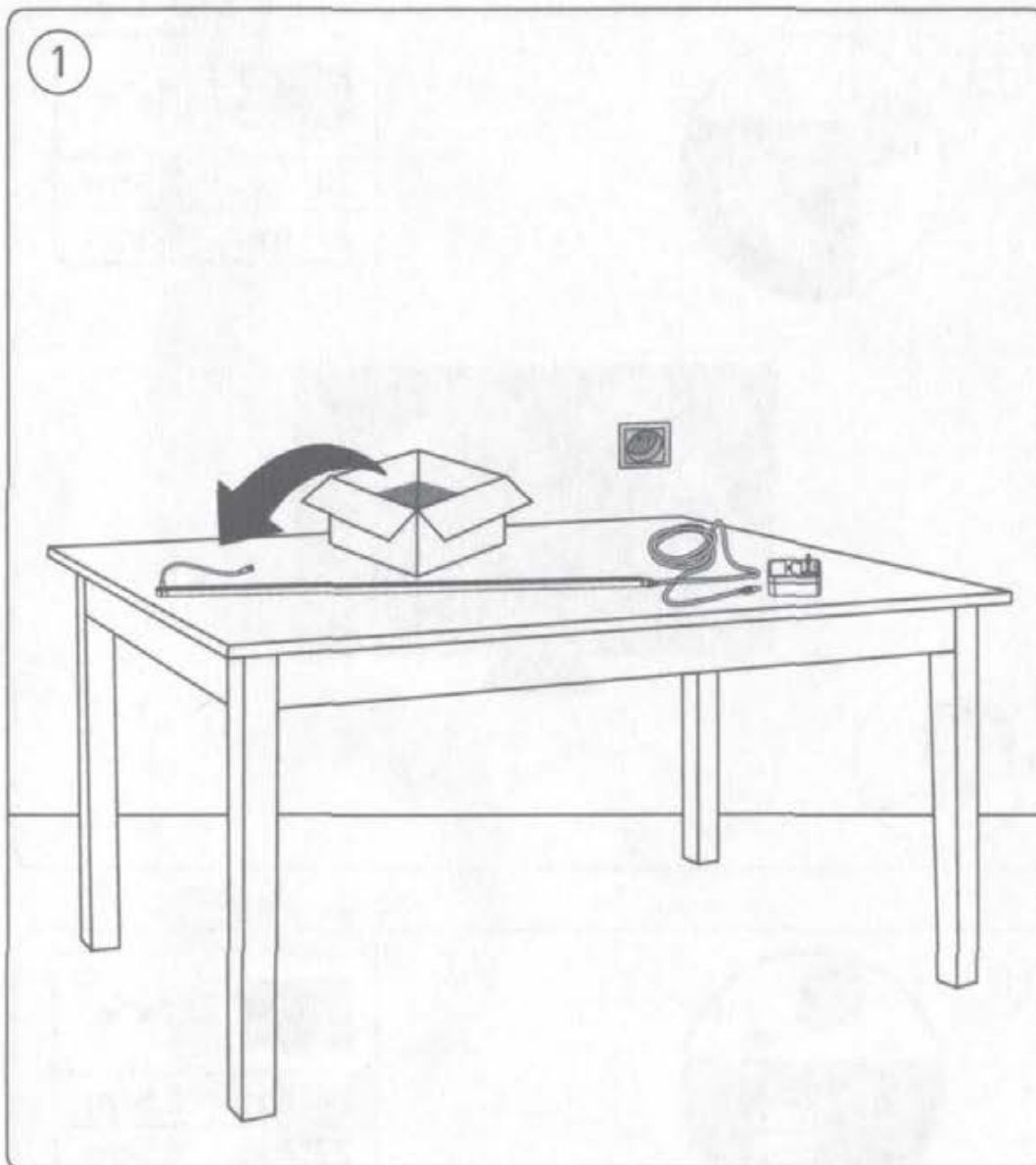
HUE serial number

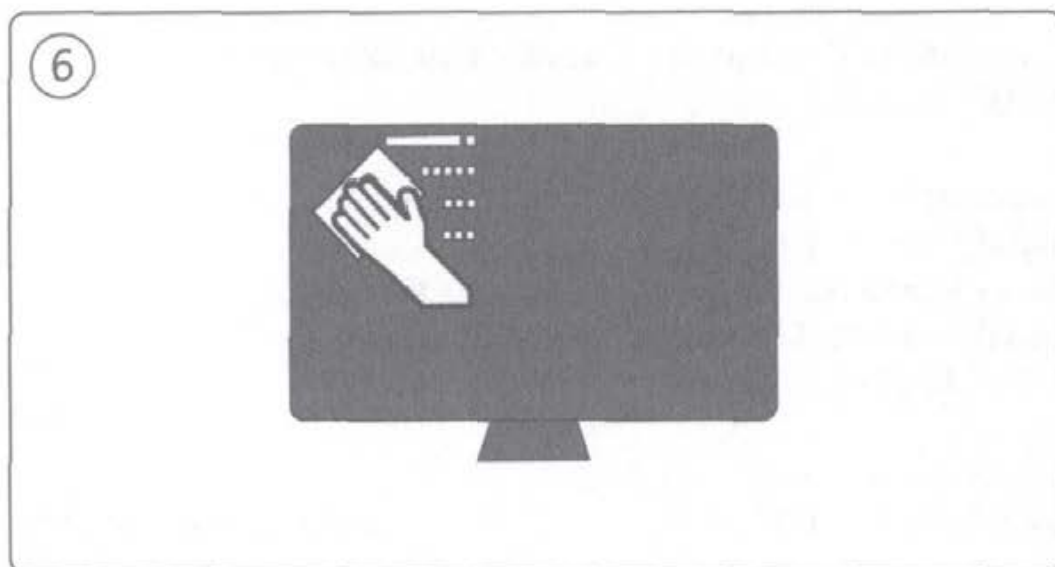
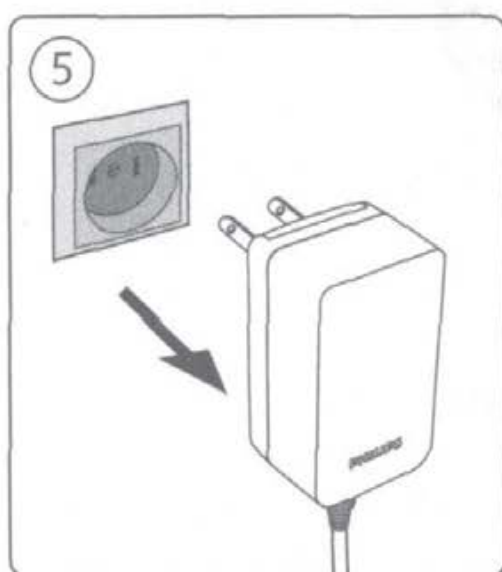
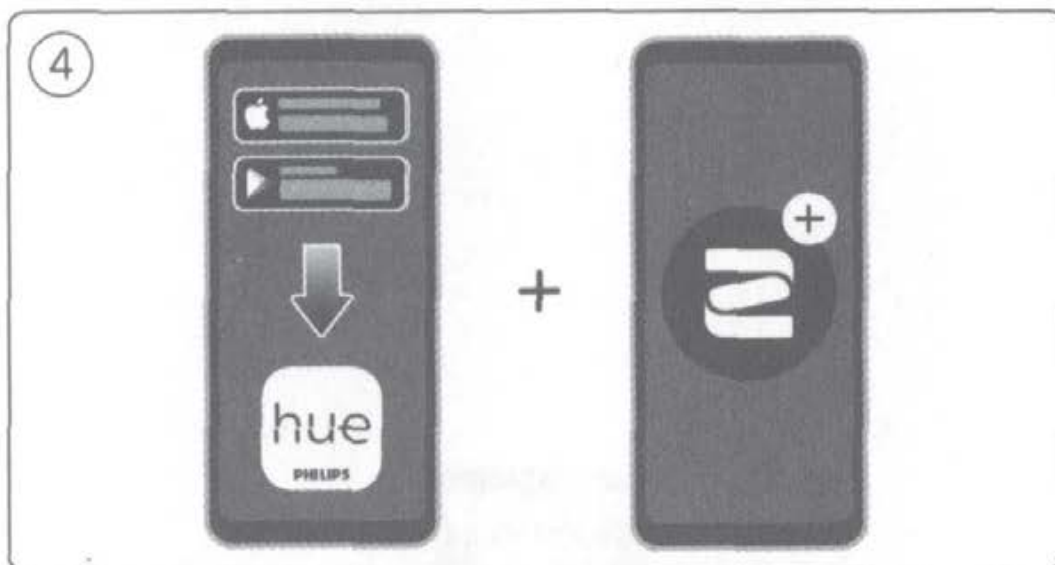


User manual
Notice d'emploi
Manual de usuario










7




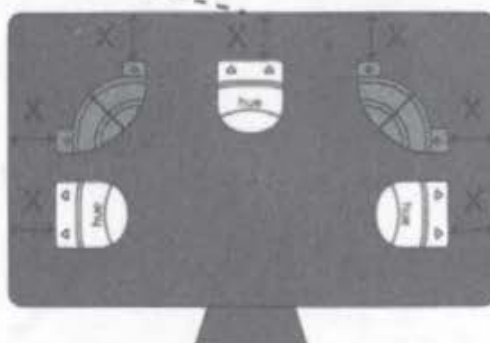
	"x" =
24"/po	2.5cm
27"/po	6.5cm



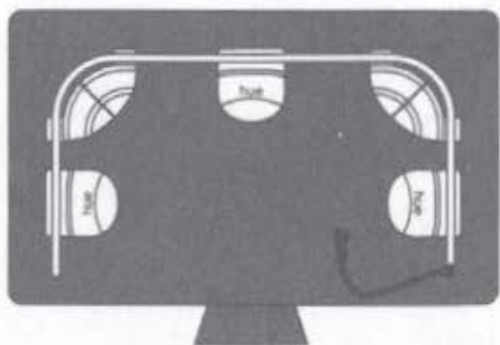
8



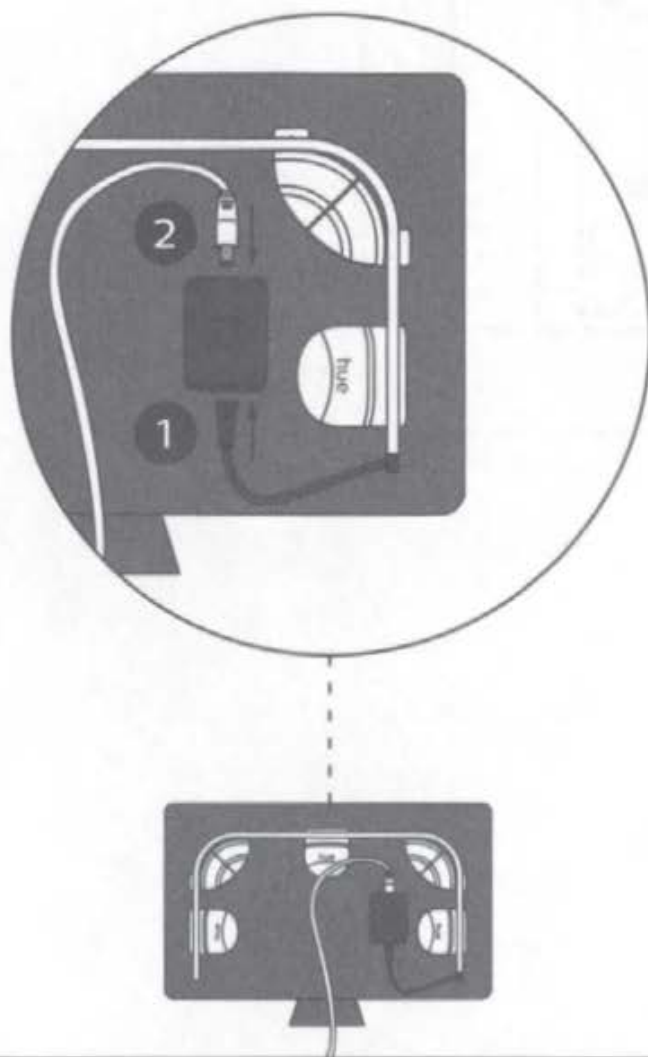
	"x" =
24"/po	2.5cm
27"/po	6.5cm

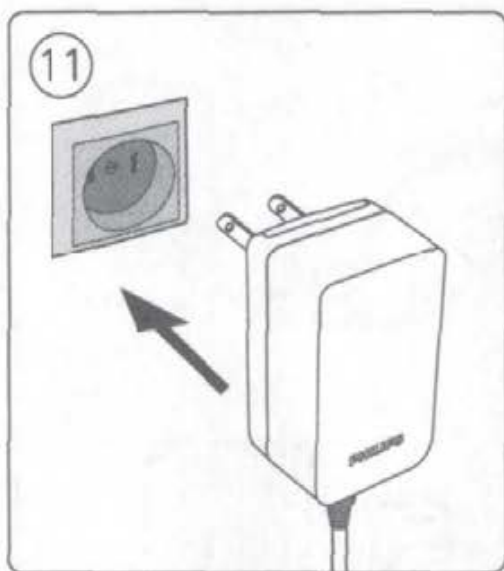


9



10







Signify North America Corporation
400 Crossing Blvd,
Suite 600 Bridgewater, NJ 08807, USA

Signify Canada Ltd./Signify Canada Ltée.
281 Hillmount Road,
Markham, ON, Canada L6C 2S3

Questions or Comments / Questions ou commentaires :
1-800-555-0050

Importado y/o distribuido en México por:
Signify Mexico S.A. De C.V.
Av. La Palma No. 6, La Herradura, Huixquilucan,
Edo de México, C.P. 52784, México
RFC PME-620620-E84

Centro de contacto:
01-800-508-9000

www.philips-hue.com

© 2022 Signify Holding
All rights reserved

3222 639 10222
Last update: 05/2022

PHILIPS



hue personal
wireless
lighting

Safety instructions Lightstrips

Signify North America Corporation
200 Franklin Square Drive
Somerset, NJ 08873, USA

Signify Canada Ltd./Signify Canada Ltée.
281 Hillmount Road,
Markham, ON, Canada L6C 2S3

Questions or comments /
Questions ou commentaires :
1-800-555-0050

Importado y/o distribuido en México por:
Signify Mexico S.A. de C.V.
Av. La Palma N° 6-Col. San Fernando,
La Herradura Huixquilucan
Edo. De México, C.P. 52784 –
R.F.C. PME-620620-E84

Centro de Contacto:
01-800-508-9000

www.philips-hue.com

© 2021 Signify Holding

01



02



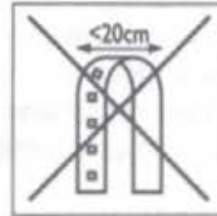
03



04



05



06



EN	03
FR	05
ES	08

EN - SAFETY INSTRUCTIONS

Thank you for purchasing this Philips Hue product, we highly appreciate your choice for the Philips brand and wish you lots of pleasure using your product. Please go to www.philips-hue.com to learn more about HUE and how to use it. This manual B contains definitions of all potentially applicable parameters & specifications with icons, as per International norms and safety standards. However not all of them may be applicable for the product you purchased - please refer to the icons in the Manual A, for the ones which are particularly applicable for this product.

ATTENTION: Below you will find all the explanations with numeric reference to the icons respectively in front of these PART-B safety instructions. Applicable icons to your fixture are shown in PART-A safety instructions. 01) This product should only be installed indoors. 02) Only suitable for dry locations. 03) The product is suitable for outdoor usage. 04) This product is not suitable for children under 14 years. 05) Minimum allowed bending is 20cm in diameter. 06) Suitable for under-cabinet mounting. This device complies with Part 15 of the FCC Rules and with RSS of Industry Canada. Operation is subject to the following two conditions: (1) this device may not cause harmful interference, and (2) this device must accept any interference received, including interference that may cause undesired operation. This equipment has been tested and found to comply with the limits for a Class B digital device, pursuant to part 15 of the FCC Rules. These limits are designed to provide reasonable protection against harmful interference in a residential installation. This device generates, uses, and can radiate radio frequency energy and, if not installed and used in accordance with the instructions, may cause harmful interference to radio communications. This Class B digital apparatus complies with CAN ICES-005 (B) / NMB-005 (B).

This digital apparatus does not exceed the class B limits for radio-noise emissions from digital apparatus as set out in the Radio Interference Regulations of the Canadian Department of Communications. NOTICE: Changes or modifications made to this device not expressly approved by Signify North America (USA) and Signify Canada Ltd./Signify Canada Ltée. (collectively "Signify") may void the U.S. FCC and Canadian authorization to operate this device.

This device has been tested and found to comply with the limits for a Class B digital device pursuant to Part 15 of the FCC rules. These limits are designed to provide reasonable protection against harmful interference in a residential installation.

This device generates, uses, and can radiate radio frequency energy and, if not installed and used in accordance with the instructions, may cause harmful interference to radio communications.

However, there is no guarantee that interference will not occur in a particular installation. If this equipment does cause harmful interference to radio or television reception, which can be determined by turning the equipment off and on, the user is encouraged to try to correct the interference by one or more of the following measures:

- Reorient or relocate the receiving antenna.
 - Increase the separation between the equipment and receiver.
 - If applicable, connect the equipment into an outlet on a circuit different from that to which the receiver is connected.
 - Consult the dealer or an experienced radio/television technician for help.
- This plug will fit in a polarized outlet only one way. If the plug does not fit fully in the outlet, reverse the plug. If it still does not fit, contact a qualified

electrician. Never use with an extension cord unless plug can be fully inserted. Do not alter the plug.

TO PREVENT ELECTRIC SHOCK, MATCH WIDE BLADE OF PLUG TO WIDE SLOT

WARNINGS AND CAUTIONS for Philips Hue indoor Lightstrips Risk of electric shock – Do not use device where directly exposed to water. The device is for indoor use only. Dry location use only.

WARNINGS AND CAUTIONS for Philips Hue outdoor Lightstrips

WARNING: When using outdoor use portable luminaires, basic safety precautions should always be followed to reduce the risk of fire, electric shock, and personal injury, including the following:

a) Use only three-wire outdoor extension cords that have three-prong grounding plugs and grounding receptacles that accept the appliance's plug.

b) Ground Fault Circuit Interrupter (GFCI) protection is to be provided on the circuit(s) or outlet(s) to be used for the wet location portable luminaire.

Receptacles are available having built-in GFCI protection and are able to be used for this measure of safety.

c) Use only with an extension cord for outdoor use, such as an extension cord of cord type SEW, SEOW, SEOOW, SOW, SOOW, STW, STOW, STOOW, SJEW, SJEOW, SJEOOW, SJW, SJOW, SJOOW, SJTW, SJTOW, or SJTOOW. SAVE THESE INSTRUCTIONS.

WIRELESS SPECIFICATIONS for all Philips Hue products

Wireless RF mode frequency band: 2,400–2,483.5 MHz

Operating channels Zigbee if applicable: channels 11 – 26

Operating channels Bluetooth if applicable : channels 0–39

Maximum transmitted power <20 dBm

Environmental specification Philips Hue indoor Lightstrips Temperature

(Storage): -25 °C to 60 °C / -13 °F to 140 °F Temperature (operation): 0 °C to 35 °C / 32 °F to 86 °F Relative humidity: 5 – 95% non condensing

Environmental specification Philips Hue outdoor Lightstrips Temperature

(Storage): -25 °C to 60 °C / -13 °F to 140 °F Temperature (operation): -20 °C to 40 °C / -4 °F to 104 °F Relative humidity: 5 – 95% non condensing

IMPORTANT SAFETY INSTRUCTIONS

The manufacturer advises the correct use of luminaires lighting fixtures! Therefore always follow these instructions to ensure correct and safe installation and functioning of the luminaire and keep it for future reference. Turn off electrical power at main fuse or circuit breaker box before commencing installation, maintenance or repair. If in doubt, consult a qualified electrician or contact your retail outlet. Ensure that you always install the luminaire to the local electrical code. Certain regulations indicate that luminaires should be installed by a qualified electrician. Always use wire nuts/connectors rated for the correct gauge and number of wires used. **CAUTION:** Be certain that no bare wire strands are exposed outside of the wire nuts/connections (if applicable). Be careful not to damage or cut the wire insulation (covering) during installation. Do not permit wires to contact any sharp edges. Do not remove thermal insulation pad(s). Doing so will result in increased temperatures and possible risk of fire. Maintain interior lighting with a dry cloth duster, do not use abrasives or solvents. Avoid liquid on all electrical parts. Always consider all the technical specifications of the luminaire. Verify the stated icons on the identification label on the luminaire and the icons that are shown in part A of your safety instructions.

CLEANING AND MAINTENANCE: Do not clean the device when it is on and connected to the power supply. To avoid scratching, the product should only be cleaned with a soft dry cloth. Do not use cleaning agents to clean the device. Manage in accordance with disposal laws in your area.

LIMITED WARRANTY: Signify warrants that this device's hardware components will be free from defects in material and workmanship for a period of two (2) years from the date of purchase, unless a different period is stated in or on the packaging of the product, based on up to 3 hours average working time per day/7 days per week, when used as directed (the "**Warranty Period**"). If this device does not conform to this limited warranty, Signify will send you, at its election, a replacement device or refund your original price upon receipt of the returned device, register receipt and proof of purchase. Please call our toll-free number, 1-800-555-0050, or write to us (address indicated on the packaging) to find out how to return the device. This limited warranty does not cover devices subject to accident, neglect, abuse, misuse or acts of God.

REPLACEMENT OR REFUND IS YOUR SOLE REMEDY. EXCEPT TO THE EXTENT PROHIBITED BY APPLICABLE LAW, ANY IMPLIED WARRANTIES ARE LIMITED IN DURATION TO THE DURATION OF THIS LIMITED WARRANTY. LIABILITY FOR INCIDENTAL OR CONSEQUENTIAL DAMAGES IS HEREBY EXPRESSEDLY EXCLUDED. Some states and provinces do not allow exclusion of incidental or consequential damages, so the above limitation or exclusion may not apply to you. This limited warranty gives you specific legal rights, and you may also have other rights which vary from state to state and province to province. This limited warranty is subject to, and may be superseded by, our End of Support policy to the extent Signify decides to terminate support for this device in accordance with its End of Support policy, available here:

www.philips-hue.com/endofsupportpolicy The Bluetooth® word mark and logos are registered trademarks owned by Bluetooth SIG, Inc. and any use of such marks by Signify is under license. Other trademarks and trade names are those of their respective owners. The product is ZigBee certified. Zigbee is an open standard for indoor wireless communication. All Philips ZigBee Certified products can be connected with other Philips ZigBee Certified products. Hue Personal Wireless Lighting is a trademark owned by Signify Holding B.V. Philips and the Philips shield emblem are registered trademarks of Koninklijke Philips N.V.

CUSTOMER SUPPORT:

For more information, please visit our website at www.philips-hue.com/support, or call our customer service (1-800-555-0050)

FR - CONSIGNES DE SÉCURITÉ

Merci d'avoir acheté ce produit Philips Hue, nous apprécions grandement votre confiance en la marque Philips et vous souhaitons beaucoup de plaisir lors de l'utilisation de votre produit. Consultez le site www.philips-hue.com pour en apprendre davantage sur Hue et sur son utilisation.

Ce manuel B contient les définitions de tous les paramètres et de toutes les caractéristiques techniques potentiellement applicables sous forme d'icônes, conformément aux normes internationales et aux normes de sécurité.

Cependant, ces paramètres et caractéristiques ne s'appliquent peut-être pas tous au produit que vous avez acheté : veuillez consulter les icônes sur le manuel A pour savoir lesquels correspondent à ce produit.

ATTENTION: Vous trouverez ci-dessous toutes les explications, précédées d'un numéro de référence, relatives aux pictogrammes et aux consignes de sécurité de la partie B. Les pictogrammes applicables à votre appareil d'éclairage sont présentés dans les consignes de sécurité de la partie A. 01)Ce produit doit être installé à l'intérieur seulement. 02)Convient uniquement aux endroits secs. 03)Ce produit convient à un usage extérieur. 04)Ce produit ne convient pas aux enfants de moins de 14 ans. 05)Le diamètre de courbure



3222 639 09191
Last update: 07/2021