

intelbras

Intelbras

LSWM1FANSCE &

LSWM1FANSCBE Fan

Trays User Manual

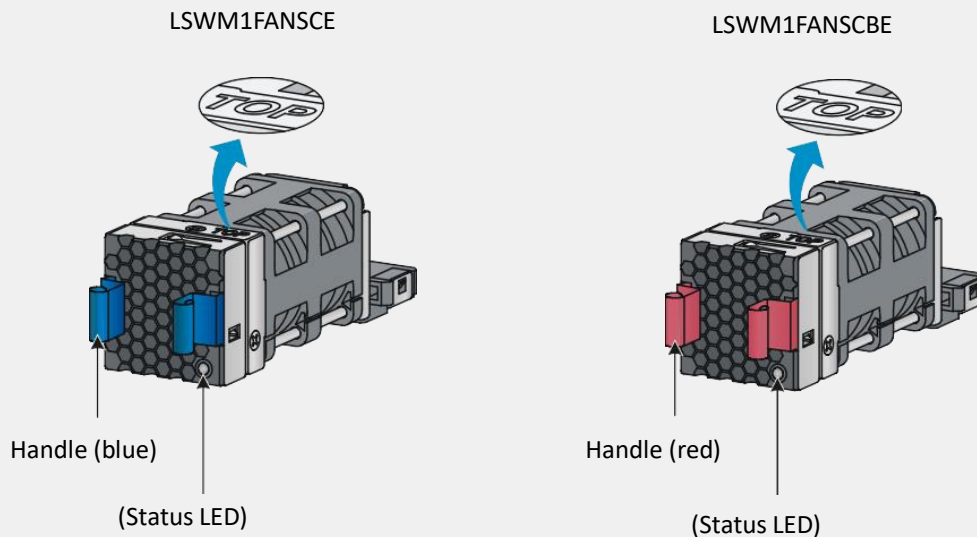
Intelbras LSWM1FANSCE & LSWM1FANSCBE Fan Trays User Manual

Overview

The LSWM1FANSCE fan tray provides airflow from the power module side to the port side. The LSWM1FANSCBE fan tray provides airflow from the port side to the power module side.

The two fan trays feature small size, fast heat dissipation, and hot swapping. They can adjust the fan speed automatically.

Views



When you install a fan tray, make sure the "TOP" sign is on the top surface of the fan tray.

Specifications for the fan trays

Item	Specification
Fans	One 40 × 56 × 40 mm (1.57 × 2.21 × 1.57 in) fan
Airflow direction	LSWM1FANSCE: From the power module side to the portside LSWM1FANSCBE: From the port side to the power module side
Max fan speed	21000 R.P.M

Item	Specification
Max airflow	26 CFM
Max power consumption	27.72 W
Voltage	12 V
Operating temperature	0°C to 45°C (32°F to 113°F)
Operating humidity	5% to 95% (non-condensing)
Storage temperature	-40°C to +70°C (-40°F to +158°F)
Storage humidity	5% to 95% (non-condensing)

Status LED

Status	Description
Steady yellow	The fan tray is operating correctly.
Flashing (1 Hz)	A problem has occurred on the fan tray.
Off	The fan tray is not securely installed or has no powerinput.

Installing or removing a fan tray

The installation and removal procedures are the same for the LSWM1FANSCE and LSWM1FANSCBE fan trays.

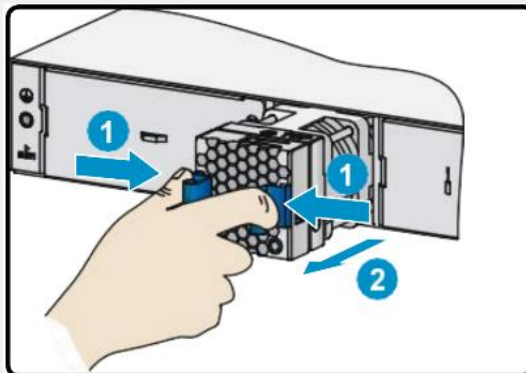
1. Safety precautions

- Before you install or remove a fan tray, wear an ESD wrist strap and make sure the wrist strap has good skin contact and is reliably grounded.
- Do not touch any naked wire or terminal.
- Do not place the fan tray in a damp environment and prevent liquid from flowing into the fan tray.

- When an internal circuit or component is faulty, do not remove any components from the fan tray.

2. Removing a fan tray

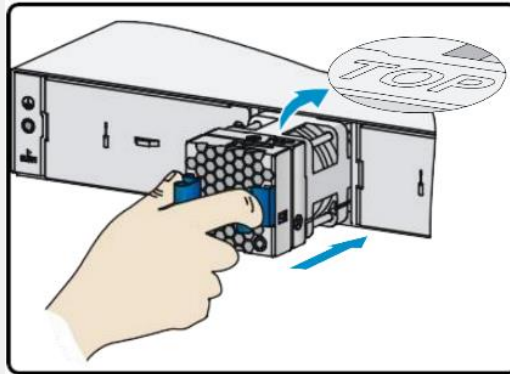
- Ensure electricity safety when you remove a fan tray on an operating device.
- Never touch the rotating fans on an operating device.
- To avoid disturbing the dynamic balance of the fans and large Noise caused by the imbalance, Intelbras recommends that you do not touch the fans and rotation axis even if the fans stop rotating.
- Place the removed fan tray in an anti-static mat or bag.



Hold tightly the fan tray handles as shown in the figure and pull the fan tray slowly out of the slot along the guide rails.

3. Installing a fan tray

- Before you install a fan tray, make sure the fan tray model is compatible with the device and the airflow direction is as required by the installation site.
- To avoid damaging the connectors on the backplane, insert the fan tray slowly. If you encounter a resistance or the fan tray tilts, remove the fan tray and reinsert it.



Orient the fan tray with the "TOP" sign on the top surface of the fan tray. Holding the handles of the fan tray as shown in the Figure, insert the fan tray slowly into the slot along the guide rails until the fan tray has good contact with the backplane.

Compatible with: SC 5525-24X-2QE, SC 5525-24X-2QE, SC 5525-24X-2HE and SC 5525-48X-2HE.