



# UniFlood M G2

## BVP353 24LED 30K 220V L24 10 DMX

3615 lm – 50 W – 3000 K

Philips UniFlood M gen2 is a cost-effective, exterior-rated architectural LED floodlight that's designed for facade, landscape and outdoor flood lighting applications. The robust, modular, rectangular design features highly efficient optics, making it ideal for illuminating everything from multi-storey facades and bridges to landmarks and monuments. ;This LED floodlight is available in white, monochromatic colours, RGB, RGBW and tunable white.It comes with six different spread lenses ranging from narrow spot to wide flood and has DMX512/RDM control option. A truly modular floodlight that gives architects and designers the freedom to explore a wide range of concepts and designs with no limitations.

### Warnings and Safety

- For outdoor use only.

### Product data

General Information		Operating and Electrical	
Lamp colour code	830 warm white	Input Voltage	220 to 240 V
Driver included	Yes	Input frequency	50 to 60 Hz
Optical cover/lens type	GC [ Clear glass]	Power factor (min.)	0.9
Control interface	Dynamic DMX/RDM	Controls and Dimming	
Connection	Flying leads/wires and 2 push-in connectors 4-pole	Dimmable	Yes
Cable	Cable 0.5 m without plug 3-pole and 2 cables 0.5 m with connector 4-pole	Mechanical and Housing	
Protection class IEC	Safety class I (I)	Housing material	Aluminum extruded
Flammability mark	F [ For mounting on normally flammable surfaces]	Optical cover/lens material	Acrylate
CE mark	CE mark	Overall length	238 mm
		Overall width	140 mm

## UniFlood M G2

Overall height	149 mm
Effective projected area	0.038 m²
Colour	Dark Grey

### Approval and Application

Ingress protection code	IP66 [ Dust penetration-protected, jet-proof]
Mech. impact protection code	IK06 [ 1 J]

### Initial Performance (IEC Compliant)

Initial luminous flux (system flux)	3615 lm
Luminous flux tolerance	+/-10%
Initial LED luminaire efficacy	72 lm/W
Lamp colour temperature	3000 K
Colour Rendering Index	>80
Initial chromaticity	4 SDCM
Initial input power	50 W

Power consumption tolerance	+/-10%
-----------------------------	--------

### Application Conditions

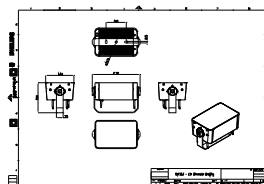
Ambient temperature range	-40 to +50 °C
---------------------------	---------------

### Product Data

Full product code	871951492575599
Order product name	BVP353 24LED 30K 220V L24 10 DMX
EAN/UPC – product	8719514925755
Order code	911401746543
SAP numerator – quantity per pack	1
Numerator – packs per outer box	8
SAP material	911401746543



## Dimensional drawing



BVP353 24LED 30K 220V L24 10 DMX

