

**CLIPSAL®**

Number 1, 2001

# new products bulletin

[clipsal.com](http://clipsal.com)

*featuring:*



**CLIPSAL®**  
ELECTRICAL ACCESSORIES

New metal  
covers for  
Eclipse and  
Slimline

*Beautiful flush metal finishes  
at an economical price*

**CLIPSAL®**  
DATACOMMS



5E Patch Leads

**CLIPSAL®**  
INDUSTRIAL



6 Series  
Plastic Push-Buttons

**CLIPSAL®**  
INTEGRATED SYSTEMS



C-Bus Scene Master

# We've sliced the price of a flush metal finish!



There's nothing like the

**look** and **feel**  
of **metal!**

Team it with the beautiful  
*low profile* design of the

## Eclipse



eclipse



Gold  
(metal finish)



Chrome  
(metal finish)



Brushed Brass  
(metal finish)



Brushed Aluminium  
(metal finish)



Now no metal cover goes on thinner! Eclipse's beautiful curved switch design enhances its low profile design. The new metal covers provide the look of an all-metal switch or socket, at a very economical cost.

eclipse

# New metal cov

slimline  
**SC2000**

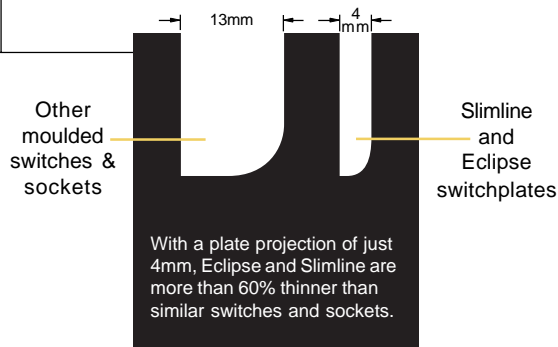


and

# Slimline

## Ranges

and you have something that only **Clipsal** can offer; a beautiful flush metal finish at a fraction of the cost of other flush metal accessories.



Brushed Aluminium (BA)



Brushed Brass (BB)



Chrome (CH)



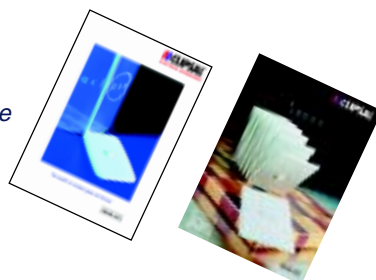
*These metal covers are also sliced extra thin! With its more traditional 'square' shape, Slimline metal covers are ideal for use with existing electrical accessories, such as C2000 Classic or 2000 Series.*

slimline  
**SC2000**



Gold (GD)

*Please refer to the Eclipse and Slimline Brochures for more information*





# Downlight Dimming Made Easy

**Clipsal Dimmers for low voltage applications**

Clipsal can now offer an EMC compliant modular dimmer for almost every low voltage lighting application.

## Electronic Transformers

In applications using electronic transformers, the Clipsal standard dimmer range is perfect. These are leading edge dimmers that offer smooth, even dimming, with no flicker. Models are available for 300VA (32E300 Series), 400VA (32E400 Series) and 600VA (2031V600 Series) applications.

## Iron Core Transformers

The 32E300LV Series is ideal for iron core transformer applications. These dimmers offer smooth, stable dimming with a minimum setting adjustment and a 300VA rating. They are also suitable for electronic transformers.\*

All dimmers are available as a module only or as assembled products in any Clipsal switchplate style. \*Derating factors apply.



New **EMC** compliant

# Two-up

Suitable for use with standard Clipsal E300, E400 dimmers



**You can't lose with this value-added approach to installing low voltage downlights**



The convenient Clipsal Downlighting Kit is a twin pack lighting kit for home or commercial use.

High quality lampholders for reliable long life are standard and pre-wired to a 2 x 1.2 metre set of laced silicone leads. An efficient 105VA electronic transformer includes overload, short circuit and over temperature protection features.

For easier installation the kit uses a two piece gimble with an extra wide flange. It also comes with a separate cut-out template to get the job done faster. And generous terminals allow for easy, direct connection.

The Clipsal Downlight Kit includes 2 x 50W 600 closed faced lamps.

Now available at your nearest electrical wholesaler - Catalogue No. CDC2E/250

**CDL2E1250**



# The *quick change* smoke alarm

**New 755 Smoke Alarm with front loading battery**



Now the best smoke alarm has become even more user friendly. The Clipsal 755 smoke alarm now has a front loading battery, so that it doesn't need to be detached from its ceiling plate to change the battery. The new 755 even looks better than before, with a new, more streamlined appearance.

## Features:

- Mains wired with a battery back-up, ensuring top protection in all conditions.
- Unit cannot be operated without a battery fitted, enhancing safety.
- Tamper resistant pins, to prevent unauthorised removal of alarm.
- High detection capability while minimising false alarms.
- Combined test/false alarm button, for ease of operation.
- Easily installed, no special tools required.
- Visual light status indicator.
- Loud 85 decibel alarm.



## Take our *great* accessories to the *great outdoors*

### Clipsal 223H Weatherprotected Enclosure

Now there's no need to compromise on style when it comes to taking electrical accessories outside. The 223H Enclosure lets you use Standard Range and 2000 Series switches and sockets outdoors in complete safety. It is attractive, easy to mount and provides protection up to IP23\* (with the flap closed).

Cat. No.	Description
223H	Weatherprotected Cover for Standard Range and 2000 Series



\* Note: IP rating depends on the wall surface.



# Testing, testing

## 484D Earth Loop Tester



The Clipsal Earth Loop Tester makes it easy to confirm fault loop impedance as required by AS/NZS3000.2000 (Clause 1.7.4.3.3.). Simply plug it in and press the button. It offers precise readings without calculations or guesswork.

### Features:

- Neon indicators confirm circuit conditions.
- Precise and easy to read digital readout.
- 3 test ranges.
- Test button with lock down facility for hands free testing.
- Resolution down to 0.01Ω.
- Automatic lock out if test register overheats.
- Robust construction.
- Carry strap.

### 484D Specifications

Loop Impedance Ranges	20/200/2000Ω
Loop Impedance Accuracy	±2% ±2dgt at 1Ω on 20Ω range
Lowest Resolution	0.01Ω
AC Test Current	25A nominal at 20Ω range
AC Test Period	20ms
Operating Voltage	220V ±10%, 50Hz
Withstand Voltage	3000V AC for 1 minute
Fuse Protection	HRC Ceramic fuses
Dimensions	175(L) x 115(W) x 86(D)mm
Weight	440g approx.
Accessories	Test Lead with plug Pouch for test leads Shoulder Strap Shoulder Pad Instruction Manual

A whole new phase for our  
a d a p t e r s



### Three Phase Test Adapters

With RCDs now common in the workplace, testing is essential to maintain a safe working environment. The Three Phase Adapter allows testing of three phase RCD outlets without disconnection or alterations. It is designed to be used with the Clipsal 486D tester (not suitable for the 486CD).

To use, simply plug the adapter into the outlet to be tested. Then plug the 486D into the adapter. This is much faster and safer than using probes. A selector switch also allows testing for fault operation on each individual phase.

### Cat. No. Description

**486AD10/20** Adapter for 10 and 20A three phase outlets.

**486AD32/50** Adapter for 32, 40 and 50A three phase outlets.

# The Awesome Foursome

is now a winner on any surface

Clipsal's four gang outlet is now more versatile than ever thanks to the new mounting block that enables surface wiring with either conduit or mini duct.

## Features

- Entries on all sides for total flexibility.
- Four sturdy fixing points for easy mounting.
- Plenty of wiring room for easy installation.

A Backing Plate is available to provide additional safety on conducting surfaces.



Cat. No.	Description
C2015D4MB	Mounting Block to suit C2015D4 Outlets.
C2015D4P	Backing Plate to suit C2015D4MB.

## new duct bulletin

## Clipsal duct is now available in a 50 x 25mm size

Adding to our popular 40 x 25mm and 60 x 25mm duct is the new 50 x 25mm size. Perfect for light and power applications as well as data and communications, the duct is attractive and comes in White Electric, Brown and Grey to suit most decors.

## Trade Packs for flexibility and value

This new selection of Trade Packs is designed to offer our popular bathroom combinations at the lowest possible price. Instead of switchplates, these packs include just the engraved mechs that can be inserted into any style of Clipsal switchplate to suit the installation (except the new 6300ATP).

## Features:

- Plain pack products available only to contractors.
- Popular, tried and tested products.(6500ATP, 6600ATP)
- Keenly priced to maximise contractor margin.
- Switches not supplied, allowing easier matching to installation.



Cat. No.	Description
6500ATP	4 x 275W Fan Light Heater Unit Trade Pack (no switches).
6600ATP	2 x 275W Fan Light Heater Unit Trade Pack (no switches).
6300ATP	Fan Light Trade Pack.

# Fresh O.erre

*The Italian made O.erre Range continues to grow, offering an unsurpassed selection of superior exhaust fans and accessories.*

## The quiet achiever

### Intra 300 Exhaust Fan (OW9201)

Centrifugal Fan designed for installation in suspended ceilings and ceiling tiles. Equipped with integral backdraught shutters and filter.

This fan is perfectly at home in modern offices as well as in upmarket homes where stylish appearance and quiet operation is of paramount importance.

The Intra 300 has an attractive soft grey grille that also allows high performance operation of 270m<sup>3</sup>/hr. This is backed up with a reliable ball bearing motor. It can be adapted to either 100mm or 120/125mm ducting.

Shutters prevent insects entering the living or work area while the filter helps to maintain a clean environment.

### The Intra 300 offers two installation options

The Intra 300's filter and grille can be easily removed for cleaning or maintenance. Simply pull down on the grille and release the spring clips that hold it to the main chassis. The spring clips are adjustable to suit various ceiling depths. The grille is manufactured from easy to clean ABS plastic.

Depending on the type of installation, brackets or timber framing may need to be used to support the fan body and duct.

**The expanded polystyrene impeller housing, zinc plated steel body and motor outside the fan housing all help to greatly reduce noise levels.**



If ceiling joists and/or timber supports are close to the area where the Intra 300 is to be positioned, the fan should be screwed directly to the framework. (Fig. 1)

If these supports are not available, special brackets or strapping should be fixed to the Intra frame and in turn fixed to roof support. (Fig. 2)

Fig.1

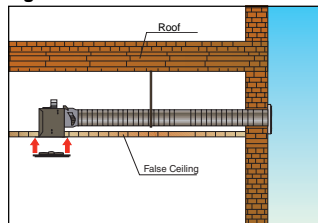
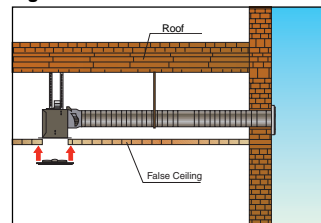


Fig.2



Unlike many centrifugal fans sold today, the Intra's low profile and modern design makes it an attractive proposition in any environment.





## Compact 300H

(OW8641)



This Compact centrifugal exhaust fan is designed for use with 100mm duct, and is the ideal solution for areas subject to high humidity, such as bathrooms and laundries. It is supplied with a built-in fully adjustable humidistat that starts the fan automatically at a predetermined humidity level.

### Features

- Built-in adjustable humidistat
- Ceiling or wall mountable
- Backdraught shutter fitted
- Supplied with filter
- Performance: 250m<sup>3</sup>/hr

## Ventilor Axial Fans

OW1901A and WK1901A



Unlike previous versions of this fan, this new model has the facility for auto-switching, or alternatively the OW9128 reversible controller can be adapted to it.

### Features

- Automatic and silent operation of shutters
- Window Fan OW1901A
- Wall Fan WK1901A
- Can be auto switched, or adapted to a 3 speed reversible controller (OW9128 sold separately)

## Electronic Controller

(OW9128)



This controller can be purchased separately and is ideal for controlling the O.erre Ventilator Fan Series.

The reversible feature of this controller allows you to extract fumes outside as well as draw fresh air back into the room.

### Features

- 3 speed reversible controller
- Adapts to Ventilator appliances up to 300W
- Controller can be recessed into an O.erre wall box

## RQ Cabinet Fan Protection Grilles

(OW1083, OW1091 & OW6421)



These grilles are quick and easy to fix and provide safe operation for a number of O.erre fans.

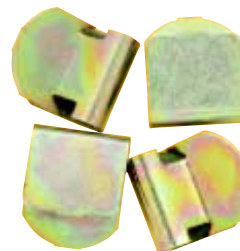
OW1083 adapts to O.erre cabinet fan OW4012

OW1091 adapts to O.erre cabinet fan OW4020

OW6421 adapts to O.erre cabinet fan OW5845

## Duct Fixing Clips

(CEDC20)



These clips secure flexible ducting to fans, fan inlets and outlets. They eliminate the need for duct tape or cable ties.

Simply push two or three duct clips on to a fan or ducting accessory collar, then pull the flexible duct over and past the clips. The angled tabs on the clips secure the flexible ducting in place.

These clips make it virtually impossible for the ducting to slip off during installation.

# Longer Lasting Air Fresheners

*Airflow Ceiling Exhaust Fans now with Ball-Bearing Motors*



Two of the most popular Airflow Ceiling Exhaust Fans now have ball-bearing motors as standard, for quieter, smoother operation and long life. The CE200 and CE250 exhaust fans can be purchased individually or in economical packs of four. Bulk packs include a bonus of 4 surface sockets. (Cat No. 413)

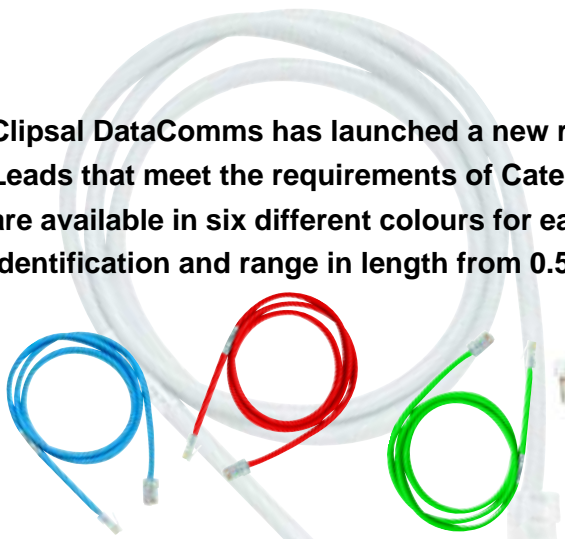
## Features:

- Heavy-duty ball bearing motor now standard with these products
- No increase in price
- Australian made
- Can be vertically mounted

## Products available

Cat. No.	Description
<b>CE200</b>	200mm ceiling exhaust fan
<b>CE250</b>	250mm ceiling exhaust fan
<b>4XCE200</b>	4 pack of 200mm exhaust fans + 4 surface sockets
<b>4XCE250</b>	4 pack of 250mm exhaust fans + 4 surface sockets

Clipsal DataComms has launched a new range of Patch Leads that meet the requirements of Category 5E. They are available in six different colours for easy circuit identification and range in length from 0.5 to 5 metres.



Patch Leads can be purchased in either a merchandised single pack with header card or in economical bulk packs of 5 leads.

## Features:

- Six colours for easy circuit identification; blue, grey, red, green, yellow and black.
- Category 5E compliant to cater for future networking needs.
- Six different lengths from 0.5 to 5 metres, to suit all size installations.
- Can be purchased in economical bulk packs.

# Patch Works

**Category 5E**

*Patch Leads*



# Two new 36ers 36 Module Plastic Consumer Switchboards

Clipsal's popular 4C Range of surface mounted consumer switchboards range is now even more versatile thanks to these two new 36 module versions.

Like existing 4C switchboards, these units are designed to enable speedy wiring, accessory mounting and installation. They are available in cream and white with transparent beige and grey doors. Up to 36 modules can be simply clipped to the full DIN rail system, while earth and neutral grid assemblies can be mounted vertically or horizontally for greater flexibility. The 4CW36FD is dustproof and hoseproof to IP56.

**Neutral Bar**  
(top, bottom, side mounted)  
4 neutral bars provided to allow splitting of RCDs for lighting and power as required by the new AS3000 Standards requirements.

**Left or right hand hinged**

**36 modules of full DIN Rail**



**Dimensions – 560H x 342W x 110D**

## Product Range

<b>4C36FD</b>	36 Module Moulded Switchboard with Full DIN rail system
<b>4CW36FD</b>	36 Module Moulded Switchboard with Full DIN rail System IP56
<b>4C36FK</b>	Flushing Kit to suit 4C36FD and 4CW36FD

(Please nominate WE for White Electric or CM for Cream)

# TheMeter Mini

## Clipsal DIN Rail kWhr Meter (4KWHR3)

This 6 digit electromechanical indirect connected kWhr meter offers convenient DIN rail mounting that is just 8 modules wide.

### Features:

- 240 (415)V 50Hz
- Current Transformer Secondary 5A
- Available CT Settings kW/h 40, 50, 60, 75, 100, 120, 150, 200, 300, 600A
- MWh 400, 500, 600, 750, 1000, 1200, 1500, 2000, 3000, 6000A
- Auxiliary Power Supply of 240V 50Hz is required
- Pulsed output 50/100mS
- Terminals – up to 4mm<sup>2</sup>



**Dimensions – 140mm (L) x 89mm (W) x 68mm (D)**



# More of the right combinations

## New MCB/RCDs

The growing trend towards combination MCB/RCDs has created the need for us to expand the range further to include 10mA and D-Curve devices.

*They feature the benefits of Power Range products such as:*

- Total protection via a combination of residual current and circuit breaker protection.
- Robust 10kA interruption capacity with 30mA or 10mA residual current for instant personal protection.
- For quick fault identification, flagging indicators display both the RCD and MCB trip.
- Each unit is printed with a unique serial number for individual identification and to assist recording in log books.
- Complies with Australian Standards AS/NZS 61009.
- Colour coded dollys for instant visual amperage identification.
- Individual circuit discrimination means fewer installer call backs through unwanted tripping.
- Suits Clipsal 4SWLD and 4LD lock off devices.
- Large terminal bores with backed off terminal screws.
- Also suitable for use with cog rails.

For hospital applications

### 10mA MCB/RCDs C-Curve

Ideally suited for hospital applications, the 4RCBE2XX/10 range meets stringent Australian Standard AS/NZS 61009.

The 10mA tripping offers enhanced protection, to complement Clipsal 30mA combination MCB/RCD devices. Available from 10A to 40A, these devices are 2 pole C-Curve tripping characteristics for general applications.

### 30mA MCB/RCDs D-Curve

In response to the new wiring rules that require all socket outlets to be RCD protected, Clipsal has released a range of D-Curve MCB/RCDs.

Being D-Curve, these combinations are ideal for high inrush currents similar to the requirements associated with motor/compressors from air-conditioners. Products are available in 30mA 2 pole D-Curve 10, 16 & 20A.



#### C-Curve for general applications

Cat No.	In	U	BC	RC	No.M	No.P	Cable Size	Dolly Col.
4RCBE210/10	10A	240V	10kA	10mA	2	2	25mm <sup>2</sup>	Grey
4RCBE216/10	16A	240V	10kA	10mA	2	2	25mm <sup>2</sup>	Blue
4RCBE220/10	20A	240V	10kA	10mA	2	2	25mm <sup>2</sup>	Yellow
4RCBE225/10	25A	240V	10kA	10mA	2	2	25mm <sup>2</sup>	Black
4RCBE232/10	32A	240V	10kA	10mA	2	2	25mm <sup>2</sup>	Red
4RCBE240/10	40A	240V	10kA	10mA	2	2	25mm <sup>2</sup>	Orange

#### D-Curve for protection of circuits with high inrush current (motors)

Cat No.	In	U	BC	RC	No.M	No.P	Cable Size	Dolly Col.
4RCBE210/30D	10A	240V	10kA	30mA	2	2	25mm <sup>2</sup>	Grey
4RCBE216/30D	16A	240V	10kA	30mA	2	2	25mm <sup>2</sup>	Blue
4RCBE220/30D	20A	240V	10kA	30mA	2	2	25mm <sup>2</sup>	Yellow

# 56+2 *New 56 Series Appliance Inlet and Extension Sockets*

Clipsal's 56 Series Range of Appliance Inlets and Extension Sockets continues to grow with the addition of two new 250V 3 pin 20 and 32A type models.

56 Series 3 phase appliance inlets feature downward facing, angled pin housings which enable extension sockets to be neatly connected without bulky right angle entries. A screwed lock ring is standard on all models to secure extension sockets and appliance sockets and to ensure the IP rating. All mouldings are impact resistant and UV stabilised.

## *Applications:*

Extension leads, power generator and equipment.



Cat. No.	Description
56AI320, GY	Appliance Inlet, 20A 250V 3 Round Pins
56AI332, GY	Appliance Inlet, 32A 250V 3 Round Pins
56CSC320, EO	Extension Socket, 20A 250V 3 Round Pins
56SCS332, EO	Extension Socket, 32A 250V 3 Round Pins

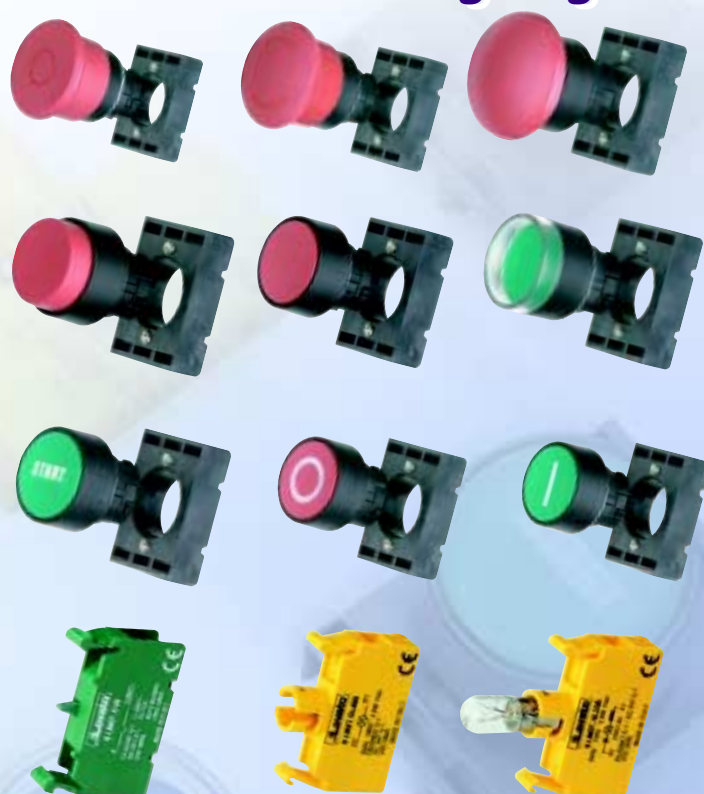
# Pushing Plastic

## *6 Series Plastic Push-Buttons and Indicating Lights*

We are pleased to announce the addition of a range of plastic body push-buttons, selector switches and illuminated push-buttons, which are light in weight yet extremely durable. Like the existing 6 Series metal bodied and double push-buttons, the new range has been designed for ease of installation and operation, flexibility and reliability.

### Main Characteristics

- Polyamide/Polycarbonate material
- 22.5mm diameter hole mounting
- 6mm maximum panel thickness
- Unique bayonet mounting adaptor enables one handed fine alignment
- Mounting adaptor included with each actuator in the plastic range
- Colour coded contact blocks suitable for the entire 6 Series Pilot Devices range
- IP20 terminal protection
- Wide colour range
- IP66 cap for 40mm mushroom head push-buttons (released in New Products Bulletin No. 1/2000)
- NEW padlock attachment for mushroom head buttons
  - Cat. No. 6PBM40PA
  - manufactured from 316 Grade Stainless Steel





# Heavyweight Boxes

## Wall Boxes to suit 3PX Power Connectors

These 3PX Series Wall Boxes are as tough as the applications they are designed for. Manufactured from marine grade 316 stainless steel, they enable surface mounting and cabling of power connectors.

### Features:

- Compact size
- Strength and durability
- Corrosion-proof 316 Marine Grade Stainless Steel
- 2 x 1.5mm sheet folded and welded
- The outer layer forming a canopy that protects the seal from dust and water
- Neoprene rubber seals for IP66 rating
- Sturdy 5 x 40mm back welded brackets for easy wall mounting



# Hanging Tough

## 3PS Pendant Outlet Kits

Pendant outlets enable convenient connection of heavy-duty power in locations where wall mounting is difficult or impractical. Three models are available to suit various amp ratings. Each is made from stainless steel and is designed for fast, easy fitting to a cable gland.

**Three Pendant Outlets are available:**

### Cat. No.

**3PS1POK** – suits 16A

**3PS3POK** – suits 32A

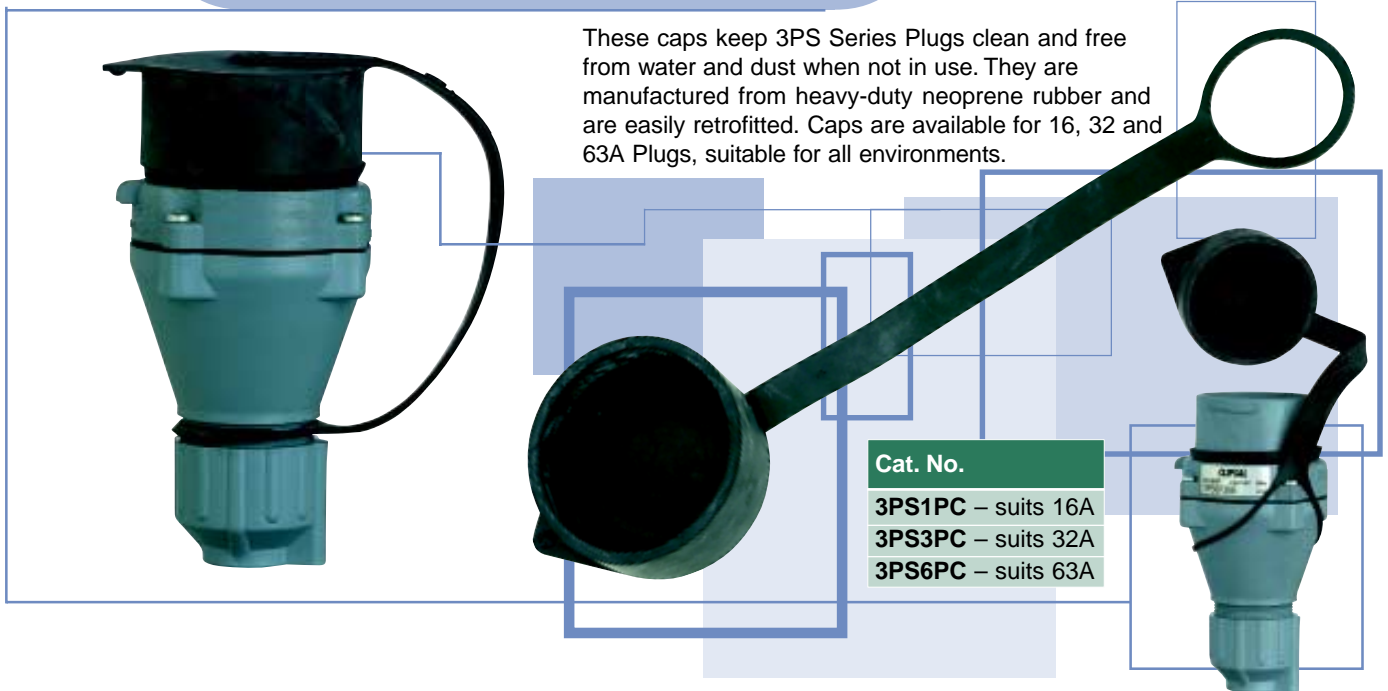
**3PS6POK** – suits 63A





# Keep it under your cap

## 3PS Series Plug Caps



## Clipsal Crimping Technology on display

### 270 Series Planogram

This Planogram is an essential sales tool as it displays the 270 Series range of products in an attractive and easy to find format.



#### Features:

- Most popular pre- and un-insulated terminals
- Layout – 8 x 15 x 5 packs
- 20 pieces per clamshell
- 8 tools – suits selected crimp terminals
- Shelf for product literature, dies, larger packs, special items, etc.
- Clamshell Cat. No. = conventional 270 Series item No. + B at the end



## Power for *professionals*

### Hand Held Electro-Hydraulic Crimp Tool

(270TLPV1300)

This handy crimp tool comes complete with a sturdy carry case with strap and space in the lid for crimp dies, a 12V Makita battery and 240V/12V charger. It provides up to 13 tonnes of pressure and suits a range of crimp types and diameters.

#### Features:

- 10-400mm<sup>2</sup> Cu; hex crimp
- 16-240mm<sup>2</sup> Al; indent crimp
- 6/6-120/120mm<sup>2</sup> Cu C-crimp
- Weight 5.2kg including battery
- 12V 2Ah Makita battery, 1hr charge time
- 30-80 crimps per charge (depending upon terminal size)
- Operational temperature: -20 to +40°C ambient
- 270TLB – dies
- Optical link tool log from built-in memory; ie # of crimps, crimp energy, etc. (Memory optical (IR) reader is an optional extra)

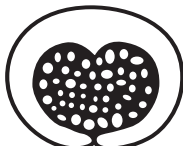


# C-worthy 270 Series C-type Copper Connectors (Branch Connectors) & Dies

The 270 Series C-type connectors include 40 C-connectors and 16 sets of C-dies to suit most branch off type connection applications.



Connector before crimping

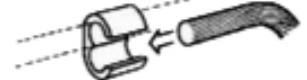


Connector after crimping

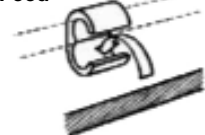


Crimped Connector

Transverse Feed



Front Feed



C-die example - Cat. No. 270TLBC5

Cable (mm <sup>2</sup> )	C-Terminal (Branch Connector)	C-dies
(Transverse Feed)	Cat. No.	Cat. No.
Main 10-6 Branch 10-6	270BR4C	270TLBC4
.	.	.
.	.	.
.	.	.
.	.	.
Main 300 Branch 300	270BR23C	270TLB40C21



# Security Video Phone



This is the latest in advanced video intercom products. The Security Video Phone consists of a door camera unit and video phone that lets you see a colour image of any visitor that arrives. It can also be used to unlock doors and gates from the video phone remotely.

## Features:

- 4 inch TFT colour LCD video screen, with high resolution camera, and adjustable shutter control
- Two way audio intercom
- 'Monitor' facility lets you view through the camera without picking up the receiver
- 'Door Key' enables remote activation of an electric door strike
- 'Against light' feature that enable viewing in almost any light conditions, day or night

## Products available

Cat. No.	Description
<b>5480VPCD</b>	Video Phone and Camera Unit
<b>5480VP</b>	Video Phone Monitor Only
<b>5480CD</b>	Camera Unit Only
<b>5480EC</b>	Expansion Chime

***See who's there, day or night***

# Keyless Entry

Anyone who has ever stood at their front door late at night, searching for their keys, will instantly recognise the benefit of the Clipsal Keyless Entry System.

The system provides fast, secure access to any workplace or home, simply by holding a special credit-card sized or key ring transponder close to a mounted reading device.

The system is very affordable and can be used in any location where security is paramount, and easy access is required. It supports up to 400 simultaneous users, and all access permissions are fully programmable. You'll never have to change the locks at your home or office again.



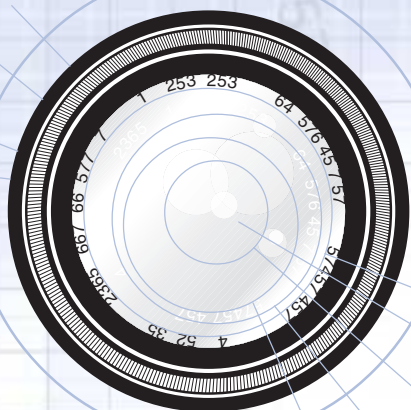
## Products available

Cat. No.	Description
<b>5470</b>	Keyless Entry System
<b>5470KT</b>	Keycard Transponders
<b>5470FB</b>	FOB Transponders
<b>5470BC</b>	Battery Charger Circuit
<b>5470S</b>	Installation Software

***System***



Caught on

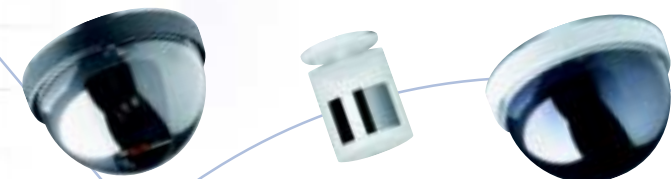


## Camera

### HomeSafe CCD Cameras and Monitors

The HomeSafe Range now offers even better security with the addition of high performance CCD cameras and monitors.

Cameras and monitors are available to suit a wide range of applications, including home and office security.



#### Colour Camera - Cat. No. 5480CLD

Colour dome camera fitted with a 3.6mm macro lens. Internal pan/tilt adjustment. Ceiling or wall mount.

**Features:** 1/3" CCD chip, 380 lines resolution, sensitivity 1 lux @ F1.2, built-in electronic shutter, 12VDC operation.

#### Black & White Camera with Audio - Cat. No. 5480CBM

This camera in a PIR housing is fitted with a high resolution board camera. The lens window is a mirrored finish which makes the camera invisible. Also fitted with a sensitive high gain microphone and supplied with a Universal Mounting Bracket.

**Features:** 1/3" CCD chip, 420 lines resolution, Sensitivity 0.02 lux @ F1.4, built-in electronic shutter, 12VDC operation, 3.6mm lens fitted.

#### Black & White Camera - Cat. No. 5480BD

B/W dome camera fitted with a 3.6mm macro lens. Internal pan/tilt adjustment and mirrored dome.

**Features:** 1/2" CCD chip, 420 lines resolution, Sensitivity 0.02 lux @ F1.4, built-in electronic shutter, 12VDC operation, Dimensions – 88mm diameter x 58mm high.

#### Colour Camera - Cat. No. 5480CLDH

This dome camera offers the latest in advanced colour technology. The advanced digital signal processing provides users with the sharpest image possible. The dome also includes a built-in varifocal lens for discreet surveillance or close-up viewing.

**Features:** Backlight compensation, AGC, 0.45 Gamma Correction, manually adjustable pan/tilt, varifocal lens; 2.8-5.8mm, 1/4" CCD chip, 480 lines of resolution, sensitivity 1 lux @ F1.2, built-in electronic shutter, 12VDC operation.

#### 15" Black & White Monitor (Single Input) - Cat. No. 5490BW

A flat picture tube monitor providing a high resolution and high contrast picture. The fast acting Automatic Frequency Control (AFC) provides stable playback from video recorders. The extra large tube makes this monitor particularly suitable for use with quad compressors and multiplexers.

**Features:** Resolution 1000+ lines, screen size 15" (38cm).

#### 14" Black & White Monitor (Quad Input) - Cat. No. 5490BW

A high resolution B&W monitor with a real time quad compressor and sequential switcher built-in. Pictures can be displayed sequentially, full screen or in quad format.

**Features:** Real time refresh rate for smooth picture display, VCR 'Zoom' playback facility, eight digit camera titles displayed on screen, time/date generator with adjustable screen position, video loss detection, grey scale test pattern chart, four alarm inputs and one output, resolution 1000+ lines, screen size 14" (34cm).

#### 14" Colour Monitor (Single Input) - Cat. No. 5490CR

A 14" colour monitor for surveillance and industrial CCTV monitoring. Operating controls for colour, brightness and contrast are safely located behind a front panel. The monitor is housed in a heavy-duty metal cabinet. Looping video inputs/outputs.

**Features:** Resolution 350+ lines, screen size 14" (35cm).

#### 14" Colour Monitor (Quad Input) - Cat. No. 5490CR4

A high resolution 14" colour monitor with a quad compressor and sequential switcher built-in. Fitted in a rugged metal enclosure, this monitor is ideal for use in all applications where clear, high quality pictures and proven system reliability are required.

# One Touch Lighting Control

## C-Bus Scene Master®

Scene Master is a powerful C-Bus scene controller capable of storing up to 5 user-adjustable lighting scenes (switching/dimming patterns), plus a master off scene. A pre-set lighting pattern can be recalled at the press of a button, or even via remote control. Scene Master makes it possible to automate an entire home to suit any activity or requirement.



### Features:

- 5 preset scenes
- 33 control zones (9 zones per scene)
- Master off function
- Infra-red remote control
- Scene and zone level indicators, with low light fallback and night-light modes
- Fully adjustable fade rates for each zone
- Scene linking
- Remote scene triggering via C-Bus
- Universal mounting bracket for easy installation



Cat. No.	Description
5035NIRS	C-Bus Scene Master and Remote Control
5035TX	Remote Control

## Intelligent and Slim

### C-Bus Slimline & Eclipse Series Key Input Units

The choice of C-Bus Key Input Units has now been greatly enhanced with the addition of Eclipse and Slimline style plates.

One, two and four gang C-Bus Key Input configurations are available in all standard Clipsal colours, including metallic finishes.

Products available	
Cat No.	Description
SL5031N	One Gang Key Input Unit, Eclipse Range
SL5032N	Two Gang Key Input Unit, Eclipse Range
SL5034N	Four Gang Key Input Unit, Eclipse Range
SC5031N	One Gang Key Input Unit, Slimline Range
SC5032N	Two Gang Key Input Unit, Slimline Range
SC5034N	Four Gang Key Input Unit, Slimline Range
SL5034NIR	Scene Controller, Eclipse Range
SC5034NIR	Scene Controller, Slimline Range





# New Switchboard Mounted C-Bus Products

*The new switchboard mounted range of C-Bus products continues to gain momentum with the release of four exciting new products.*

## C-Bus DIN Power Supply Supports up to 17 input units

### Features:

- Just 4 modules wide, ideal for use in switchboards
- Easy interconnection using RJ patch cable (loop-in/loop-out)
- 350mA source to C-Bus network, capable of supporting up to 17 standard input units on a C-Bus network
- Software selectable system clock
- Unit and C-Bus diagnostic status indicators
- Fully backwards compatible with existing installations



Cat. No.	Description
5500PS	C-Bus DIN Power Supply, 350mA

## C-Bus DIN PC Interface Convenience and flexibility in a box

### Features:

- Just 4 modules wide, ideal for switchboard applications
- Easy interconnection using RJ patch cable (loop in/loop out)
- Supports RS232 connection by RJ45 or DB9 serial cable connector located on the front panel of the unit
- Software selectable network burden and system clock
- Unit and C-Bus diagnostic status indicators
- New and improved communications firmware, providing fast and highly reliable network access
- Fully backwards compatible with existing installations



Cat. No.	Description
5500PC	C-Bus DIN PC Interface



# Complete the project in *half the time*

## C-Bus DIN Four Channel Dimmer

### Features:

- 12 modules wide, ideal in switchboard applications
- Easy interconnection using RJ patch cable (loop in/ loop out). Suitable for incandescent and low voltage lighting applications
- 4 channels of dimmed mains at 2A per channel
- Local control buttons and channel status indicators
- Remote override facility
- Software selectable network burden and system clock



## C-Bus DIN Four Channel Relay

### Features:

- 8 Modules wide, ideal in switchboard applications
- 4 channels of switched mains at 10A per channel, suitable for incandescent and fluorescent loads
- Local control buttons and channel status indicators
- Remote override facility
- Unit and C-Bus diagnostic status indicators
- Software selectable network burden and system clock



Cat. No.	Description
<b>5504D2A</b>	C-Bus DIN Four Channel Dimmer, 200mA Power supply
<b>5504RVFP</b>	C-Bus DIN Four Channel Relay
<b>5504D2AP</b>	C-Bus DIN Four Channel Dimmer

# Professional Lighting Effects

## C-Bus 10A Professional Series Dimmer

Hot on the heels of the successful launch of C-Bus Professional Series Dimmers comes a new 2 channel, 10 ampere model.

As with the previous models, this dimmer is designed for high powered dimming applications. It is suitable for use in restaurants, theatres, conference centres and other entertainment venues, where it will provide spectacular lighting effects.

### Features:

- 2 channels of 10A, suitable for incandescent and low voltage lighting
- Current monitoring for each channel
- Voltage and frequency stability, to compensate for mains voltage fluctuations and ensure constant output
- Local and remote overrides to control outputs
- Thermal and over-current protection with automatic shut down
- A C-Bus power supply to source 60mA to the network
- Emergency lighting interface which can signal essential services on loss of mains power to the unit
- Linear brightness output over the complete range 0 – 100%



Cat. No.	Description
<b>5102D10</b>	C-Bus Professional Series Dimmer (2 x 10A)

# A departure from the ordinary

## Stingray Exit Luminaire

Just because exit lights are a safety product doesn't mean they can't look good! The new Stingray offers all the features you expect from Pierlite; quality and easy installation, together with the kind of styling you may not expect in an exit light. It is suitable for all general purpose interior applications.

### Features:

- White, non-discolouring body manufactured in ABS
- Test switch and red LED charging indicator
- Separate base plate for faster connection
- Supplied with 2.4 Volt, 4Ah NiMH
- 2 hour lamp duration in emergency mode
- Complies with EMC and AS/NZS2293



### Products available

Cat. No.	Description
<b>ST10ME</b>	1 x 10W maintained EXIT body, including lamp & exit diffuser
<b>ST10SE</b>	2 x 10W sustained EXIT body, including lamp & exit diffuser
<b>ST10NMO</b>	1 x 10W non-maintained EXIT body, including lamp and opal diffuser
<b>STT10SE</b>	Theatre version Stingray.
	2 x 10W sustained EXIT body including lamps
Exit Diffusers	
<b>ST01</b>	EXIT
<b>ST02</b>	EXIT arrow left
<b>ST03</b>	EXIT arrow right
<b>ST04</b>	EXIT double arrow
<b>ST05</b>	Plain opal
<b>ST06</b>	Theatre version diffuser, black background, green lettering, EXIT
<b>ST07</b>	Theatre version diffuser, black background, green lettering, EXIT arrow left
<b>ST08</b>	Theatre version diffuser, black background, green lettering, EXIT arrow right
<b>ST09</b>	Theatre version diffuser, black background, green lettering, EXIT double arrow



## Night Safe

### Home Emergency Light

*Lights up when the power fails*

The Pierlite Night Safe Home Emergency Light puts an end to stumbling around in the dark after a power failure. The light has two built-in batteries that are charged continuously via the mains. When a power failure occurs, the light switches on automatically, providing safe and convenient illumination for one hour.

### Features:

- Comes with lamp and two Nickel Cadmium rechargeable batteries
- 1 hour emergency duration after mains failure
- Test switch to check lamp
- Red LED to indicate batteries are being charged. Also confirms circuit continuity with the lamp
- Ideal in any room, corridor or entrance where safety lighting would be beneficial in a blackout



Cat. No.	Description
<b>NS1</b>	Single, 2.4V 0.5 amp BA9S lamp, non-maintained emergency luminaire c/w lamp



## Emergency Lighting in Commercial Environments

### Firefly Emergency Luminaires

These state-of-the-art, single point recessed luminaires are designed to provide high performance emergency lighting in all types of commercial premises. Two disc sizes provide either optimum performance or low profile good looks where appearance is a primary concern.

#### Features:

- Classification testing to current requirements of AS/NZS2293
- Sturdy steel body formed to precise design faceting and finished in white, non-discolouring pure polyester powder
- Filament failure indication
- FF608 and FFC608 complete with flex and plug
- Test switch and red LED charging indicator on reflector disc
- Latest battery technology, NiMH
- Variable rate charge 320ma – 275ma
- Operates off normal 240V 50Hz



Cat. No.	Description
<b>FF608</b>	140mm dia. Recessed, 125mm cut-out, NIMH batteries, c/w lamp
<b>FFC608</b>	85mm dia. Recessed, 75mm cut-out, NiMH batteries, c/w lamp
<b>FF608L</b>	140mm dia. Recessed, 125mm cut-out, lead acid battery, c/w lamp
<b>FFSQ608</b>	205mm surface mounted square, 50mm deep, NiMH, c/w lamp

## Weatherproof Emergency Lighting

### Lunalux Emergency Bulkhead IP65

This all purpose interior or exterior prismatic circular fluorescent bulkhead is both weatherproof and impact resistant. The high performance lamp and lens provides maximum spacing, for emergency lighting, over a large area. It is ideal for apartment buildings, amenity blocks, clubs, hotels, stairwells, and under eaves and awnings.

#### Features:

- White non-discolouring one piece injection moulded
- Polycarbonate prismatic lens with recessed o-ring ensures high IP65 rating.
- Anti-vandal socket head cap screw retains lens to body
- Side entry 20mm conduit channels for cable entry located in base to ensure flush mounting
- Test switch and red LED charging indicator located next to lamp under lens
- High temperature, 4.8 Volt, 4Ah Nickel Cadmium batteries
- 2 hours lamp duration in emergency mode
- Charging current, variable rate 350ma – 275ma
- Operates off normal 240V 50Hz mains supply



Cat. No.	Description
<b>LL28M</b>	28W circular fluoro. (maintained) c/w lamp & integral emergency pack
<b>LL28</b>	28W circular fluoro. (mains only version) c/w lamp



# New products at a glance

**CLIPSAL**  
ELECTRICAL ACCESSORIES



Eclipse Range



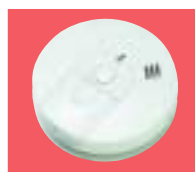
Slimline Range



Downlight Dimmers



Twin Pack Downlight Kit



Quick Change Smoke Alarm



Weatherprotected Enclosure



Earth Loop Tester



Three Phase Adapters



Four Gang Outlet



Trade Packs



New Clipsal Duct



Fresh O.erre

**CLIPSAL**  
DATA COMMS

**CLIPSAL**  
INDUSTRIAL



Patch Leads



36 Module Plastic Switchboards



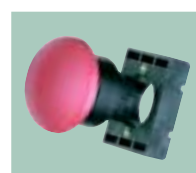
Mini Meter



MCB/RCDs



56 Series Inlet and Extension Sockets



6 Series Plastic Push-Buttons



3PX Power Connectors



3PS Pendant Outlet Kits



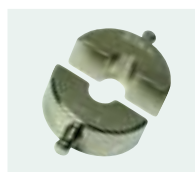
3PS Series Plug Caps



270 Series Planogram



Electro-Hydraulic Crimp Tool



270 Series C-type Connectors

**CLIPSAL**  
INTEGRATED SYSTEMS



Security Video Phone



Keyless Entry System



CCD Cameras and Monitors



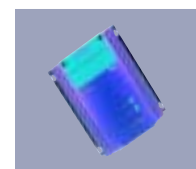
C-Bus Scene Master



Slimline Series Key Input Units



Switchboard Mounted Products

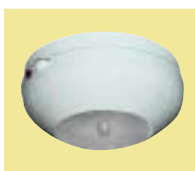


10A Professional Series Dimmer

**PIERLITE**  
LIGHTING



Stingray Exit Luminaire



Night Safe Emergency Light



Firefly Emergency Luminaire



Lunalux Emergency Bulkheads

## Products of Gerard Industries Pty Ltd

ABN 27 007 873 529

### Head Office

12 Park Terrace, Bowden  
South Australia 5007  
Telephone (08) 8269 0511  
Facsimile (08) 8340 1724  
E-Mail [plugin@clipsal.com.au](mailto:plugin@clipsal.com.au)  
Internet [clipsal.com](http://clipsal.com)

## Offices in all States

<b>NSW</b>	Sydney	(02) 9794 9200
	Albury	(02) 6041 2377
<b>VIC</b>	Melbourne	(03) 9207 3200
	Country Areas	1800 653 893
<b>QLD</b>	Brisbane	(07) 3244 7444
	Townsville	(07) 4729 3333
<b>SA</b>	Adelaide	(08) 8269 0555
<b>WA</b>	Perth	(08) 9442 4444

<b>TAS</b>	Hobart	(03) 6272 3177
	Launceston	(03) 6343 5900
<b>NT</b>	Darwin	(08) 8947 0278

Printed by Custom Press Pty Ltd (08) 8346 7999  
Order Number 17036