

## TempStar® with optional Ventless and Energy Recovery

Project \_\_\_\_\_  
 Item \_\_\_\_\_  
 Quantity \_\_\_\_\_  
 CSI Section 11400 \_\_\_\_\_  
 Approval \_\_\_\_\_  
 Date \_\_\_\_\_

TempStar® with optional Ventless and Energy Recovery

### Models

TempStar® VER     TempStar® HH-E VER



### Standard Features\*

- Ventless: Does not require a hood
- Energy Recovery
- Internal condensing system minimizes water vapor
- Sani-Sure™ feature ensures proper rinse water temperature
- Multi-cycle timer (Extra Heavy, Heavy, Medium, Normal)
- Specially designed stainless steel nozzles provide superior cleaning action
- Auto-fill/auto-start
- Door switch
- Built-in pressure regulator and door interlock are standard
- Delime/manual wash switch
- Hi-limit thermostat and low water protection
- Uses standard 20" X 20" (508 mm X 508 mm) racks
- Detergent/rinse additive signal connection fuse box
- Self-draining stainless steel pump
- Built-in 70° F (38.9° C) rise booster heater
- Field convertible from straight through to corner and vice versa

### Mandatory Specs

Specify voltage \_\_\_\_\_  
 Specify booster size \_\_\_\_\_

### Options

- 480V Electrical
- Single Phase
- Drain Quench System
- Scaltrol
- Water Hammer Arrestor
- Flanged Feet
- False Panel
- Security Package

### Accessories

- 36-Compartment Rack
  - 4-1/8" tall (105 mm)
  - 5-5/8" tall (143 mm)
  - 7" tall (178 mm)
- Combination Rack
- Peg Rack

### Specifications

TempStar uses 0.89 gallons (3 liters) of water per rack; TempStar HH-E uses 0.72 gallons (2.73 liters) of water per rack

TempStar (normal) cycle time - 87 seconds\*  
 TempStar HH-E (normal) cycle time - 90 seconds\*

TempStar - 39 racks per hour (normal cycle)\*  
 TempStar HH-E - 37 racks per hour (normal cycle)\*

Single point connections for all utilities

Cold water connection only\*

Durable stainless steel construction

TempStar - 17.25" (438 mm) door opening accepts 18" (457 mm) trays

TempStar HH-E - 20.75" wide x 27" high (527 mm x 686 mm) opening accommodates 18"x 26" (457 mm x 660 mm) sheet pans and 60-quart mixing bowls

TempStar is field phase convertible

TempStar ships fully assembled



Intertek

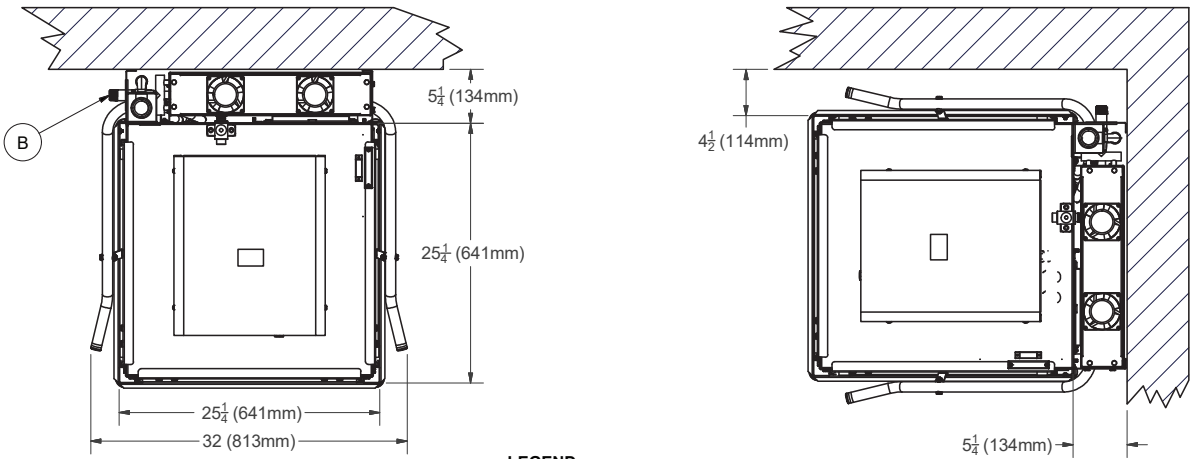
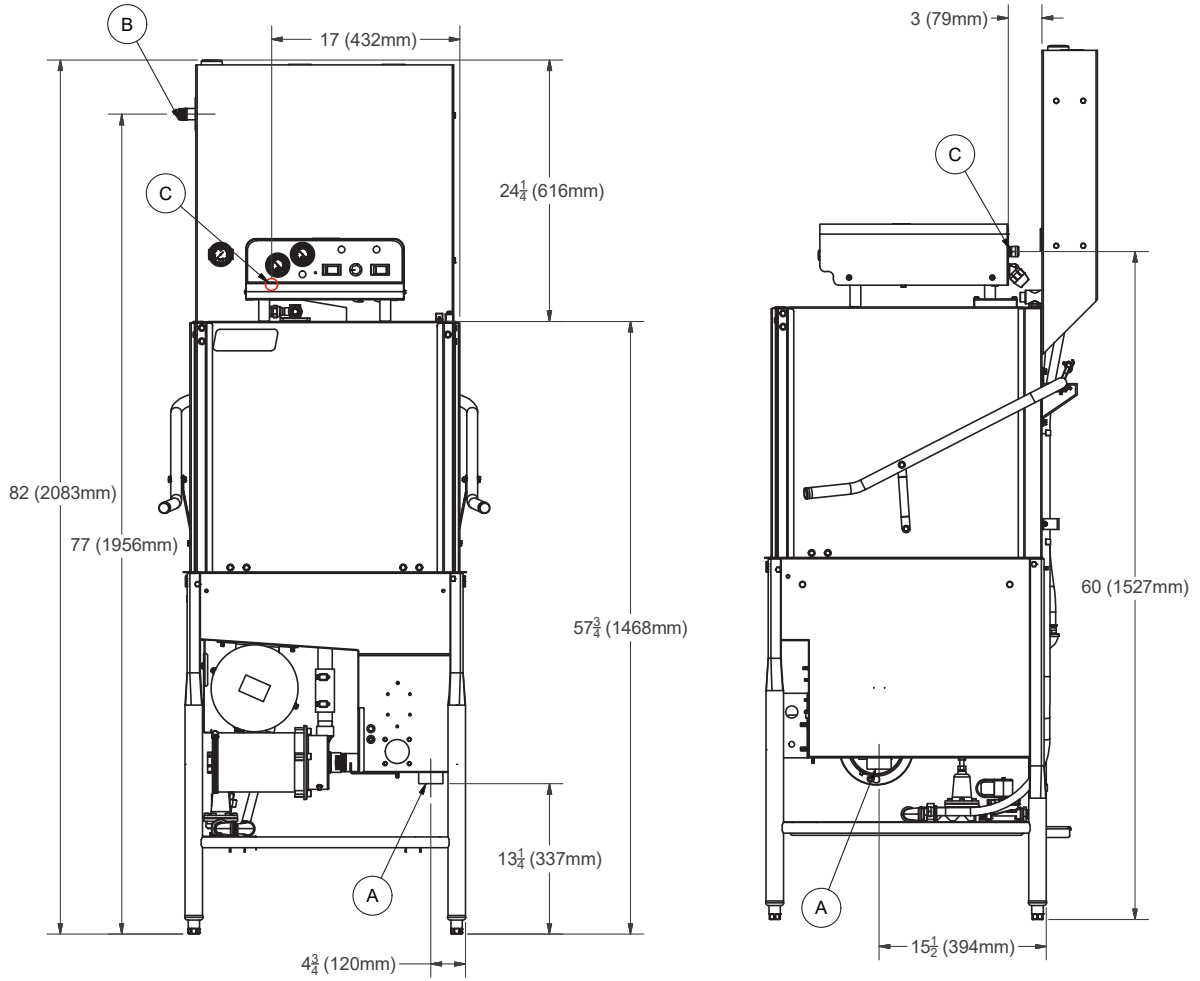


Intertek



\*Specs shown for TempStar / TempStar HH-E with optional Ventless and Energy Recovery

# TempStar



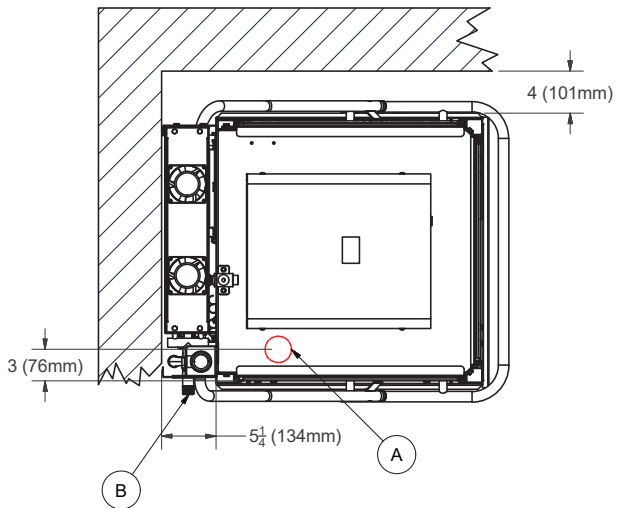
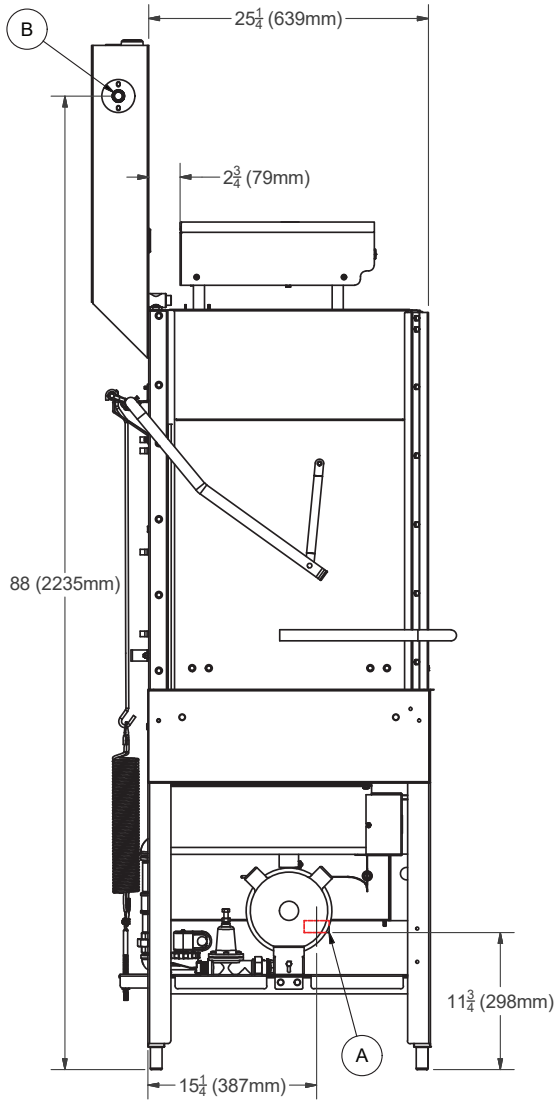
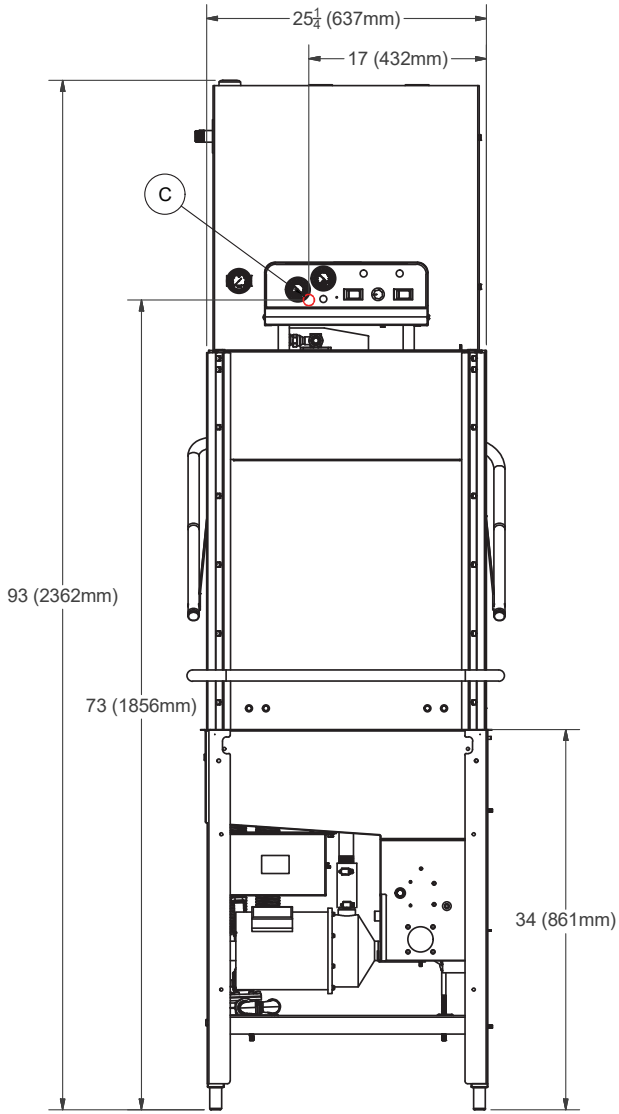
**LEGEND**

- A) DRAIN 1 $\frac{1}{2}$  IPS
- B) WATER INLET 3 $\frac{3}{4}$  MIP
- C) ELECTRICAL CONNECTIONS

All vertical dimensions are  $\pm 1/2"$  due to adjustable bullet feet

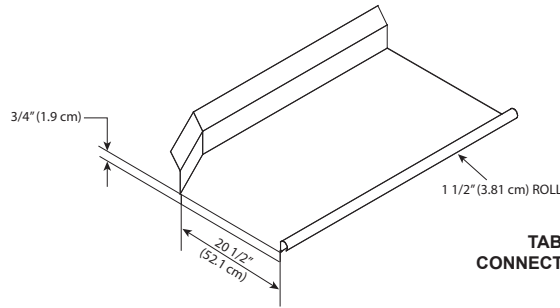
# TempStar HH-E

TempStar® with optional Ventless and Energy Recovery



- LEGEND**
- A) DRAIN 1 1/2 IPS
  - B) WATER INLET 3/4 MIP
  - C) ELECTRICAL CONNECTIONS

All vertical dimensions are ± 1/2" due to adjustable bullet feet



**TABLE DIMENSIONS  
CONNECTION TO DISHMACHINE**

| MODEL NO.      | MACHINE DIMENSIONS* |                     |                     |                     | DRAIN HEIGHT        | SHIPPING INFORMATION* |       |                  |                      |                  |                  |
|----------------|---------------------|---------------------|---------------------|---------------------|---------------------|-----------------------|-------|------------------|----------------------|------------------|------------------|
|                | HEIGHT              | WIDTH               | DEPTH               | DEPTH               |                     | WEIGHT                | CLASS | CUBE             | HEIGHT               | WIDTH            | DEPTH            |
| TempStar*      | 82"<br>(2083 mm)    | 25-1/4"<br>(641 mm) | 30-1/2"<br>(775 mm) | 30-1/2"<br>(775 mm) | 13-1/4"<br>(337 mm) | 358 lbs<br>(163 kg)   | 200   | 87.79<br>cu. ft. | 86"<br>(2185 mm)     | 42"<br>(1067 mm) | 42"<br>(1067 mm) |
| TempStar HH-E* | 93"<br>(2362 mm)    | 25-1/4"<br>(641 mm) | 30-1/2"<br>(775 mm) | 30-1/2"<br>(775 mm) | 11-3/4"<br>(298 mm) | 451 lbs<br>(205 kg)   | 200   | 84.35<br>cu. ft. | 82.625"<br>(2099 mm) | 42"<br>(1067 mm) | 42"<br>(1067 mm) |

| DIMENSION REQUIREMENTS                        |                   |
|---|-------------------|
| Wall Clearance (minimum)*                     | 0" (0 mm)         |
| Clearance above Heat Exchanger (minimum)*     | 6" (152 mm)       |
| Standard Table Height                         | 34" (864 mm)      |
| Inside Vertical Clearance - TempStar          | 17-1/4" (438 mm)  |
| Inside Vertical Clearance - TempStar HH-E     | 27" (686 mm)      |
| Machine Height with Door Open - TempStar      | 76" (1933 mm)     |
| Machine Height with Door Open - TempStar HH-E | 86-3/4" (2202 mm) |

| OPERATING CAPACITY*            |        |        |       |             |
|--------------------------------|--------|--------|-------|-------------|
|                                | Normal | Medium | Heavy | Extra Heavy |
| Racks per Hour - TempStar      | 39     | 24     | 17    | 11          |
| Racks per Hour - TempStar HH-E | 37     | 23     | 17    | 11          |

| OPERATING TEMPERATURES |                |
|------------------------|----------------|
| Wash (minimum)         | 150° F (66° C) |
| Rinse (minimum)        | 180° F (82° C) |

| TANK HEATER SPECIFICATIONS                      |       |      |
|---|-------|------|
|   | Volts | KW   |
| Electric Wash Tank Heater                       | 208V  | 4.1  |
|   | 230V  | 5.0  |
|   | 460V  | 5.0  |
| Electric Rinse Tank Heater - 70°F (38.9°C) Rise | 208V  | 10.5 |
|   | 230V  | 12.9 |
|   | 460V  | 12.9 |

| WASH PUMP MOTOR                 |      |
|---------------------------------|------|
| Wash Pump Motor - TempStar      | 1 hp |
| Wash Pump Motor - TempStar HH-E | 2 hp |

\*Specs shown for TempStar / TempStar HH-E with optional Ventless and Energy Recovery

HOW TO SPECIFY: TempStar® with Ventless & Energy Recovery

HOW TO SPECIFY: TempStar® HH-E with Ventless & Energy Recovery

| WATER REQUIREMENTS             | TempStar                   | TempStar HH-E     |
|--------------------------------|----------------------------|-------------------|
| Inlet Temperature*             | 40 - 90° F (4.4 - 32.2° C) |                   |
| Gallons per Hour*              | 35 gal (133 L)             | 39.6 gal (150 L)  |
| Gallons per Rack               | 0.89 gal (3 L)             | 0.72 gal (2.73 L) |
| Waterline Size MIP (minimum)*  | 3/4"                       | 3/4"              |
| Drainline Size IPS (minimum)   | 1- 1/2"                    | 1- 1/2"           |
| Flow Pressure (PSI) Connection | 40                         | 40                |
| Operating Flow Pressure (PSI)  | 10                         | 10                |
| Wash Tank Capacity             | 8 gal (30 L)               | 8 gal (30 L)      |
| Booster Tank Capacity          | 3 gal (11 L)               | 3 gal (11 L)      |

| APPROXIMATE LOAD AMPS |          |             |
|-----------------------|----------|-------------|
|                       | TempStar | TempStar HH |
| Power Supply          | AMPS     | AMPS        |
| 208V/60HZ/1PH         | 75.8     | 87          |
| 208V/60HZ/3PH         | 46.3     | 55          |
| 230V/60HZ/1PH         | 83.6     | 96          |
| 230V/60HZ/3PH         | 50.7     | 61          |
| 460V/60HZ/3PH         | 24.1     | 28          |

| OPERATING CYCLE FOR TEMPSTAR* |      |       |       |                    |             |
|-------------------------------|------|-------|-------|--------------------|-------------|
|                               | Wash | Rinse | Dwell | Condensate Removal | Total Cycle |
| Normal                        | 40   | 13    | 4     | 30                 | 87          |
| Medium                        | 100  | 13    | 4     | 30                 | 147         |
| Heavy                         | 160  | 13    | 4     | 30                 | 207         |
| Extra Heavy                   | 280  | 13    | 4     | 30                 | 327         |

| OPERATING CYCLE FOR TEMPSTAR HH-E* |      |       |       |                    |             |
|------------------------------------|------|-------|-------|--------------------|-------------|
|                                    | Wash | Rinse | Dwell | Condensate Removal | Total Cycle |
| Normal                             | 40   | 10    | 10    | 30                 | 90          |
| Medium                             | 103  | 10    | 10    | 30                 | 153         |
| Heavy                              | 163  | 10    | 10    | 30                 | 213         |
| Extra Heavy                        | 283  | 10    | 10    | 30                 | 333         |

| AMBIENT HEAT LOAD (as tested on standard height model) |      |
|--|------|
| Latent Heat (BTU)                                      | 5300 |
| Sensible Heat (BTU)                                    | 4500 |

### Jackson WWS, Inc.

Shipping Address: 6209 North U.S. Highway 25E, Gray, KY 40734

Mailing Address: P.O. Box 1060, Barbourville, KY 40906

Telephone: 888-800-5672 • Fax: 606-523-1799

Email: info@jacksonwws.com

07610-002-66-59B [02/05/18]

[www.jacksonwws.com](http://www.jacksonwws.com)