

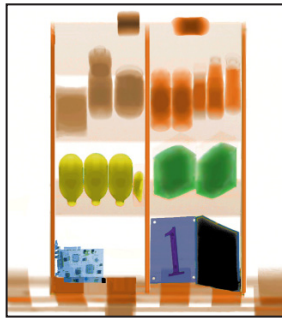


XIS-6545

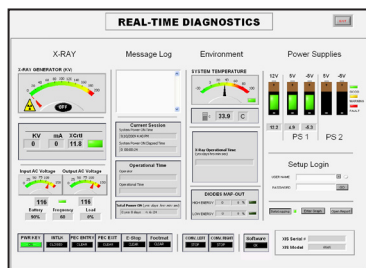
Highest Penetration in the Market

Checkpoint Security: Baggage and Parcel Inspection

6 Color Imaging



Real-Time Diagnostics



The XIS-6545 is the ultimate X-Ray Inspection System with a tunnel opening of **651 x 454 mm (25.6" x 17.9")**. Designed for small to medium sized objects, the XIS-6545 is the **first product** ever manufactured by Astrophysics and is characterized by its **reliability, optimal dimensions and effective threat detection**.

The XIS-6545 boasts a **diverse application range** from courthouses, prisons, hospitals, and airport checkpoints to practically any security screening location. With a standard 160 kV generator, the XIS-6545 is also available for upgrade to a **180 kV generator**.

Among the **most commonly sold** XIS units, the XIS-6545 is a quality product that offers **ideal dimensions, advanced technology and maximized throughput**.

Astrophysics has the **best lead times in the industry**. We offer immediate screening solutions with unparalleled order flexibility and customization.

All XIS Systems are equipped with **Real-Time Diagnostics**, a unique Astrophysics feature which allows users to monitor their machine health, thus greatly increasing the system lifespan.

An exclusive Astrophysics standard feature, **6 Color Imaging** enables operators to view screened objects in 6 colors, with each color correlating to a specific range of Atomic Z-Numbers. 6 Color Imaging enables operators to achieve **optimal material identification** and improve throughput with more effective screening technology.

Backed by a team of experts with more than **60 years of combined industry experience**, Astrophysics manufactures and designs to the **highest standards of excellence**.

With a focus on X-Ray Systems, the XIS Series features **top-of-the-line software and hardware technology** establishing Astrophysics as the **leader in innovation and quality**.

Astrophysics is headquartered in the United States, but maintains multiple field offices worldwide for **localized support**.

For your convenience, we also retain a dedicated Sales and Service team committed to providing a **personalized and timely response 24/7**.

General Specifications

- Tunnel Size: 651 mm x 454 mm
(W x H) 25.6" x 17.9"
- Dimensions: 2164 mm x 873 mm x 1316 mm
(L x W x H) 85.2" x 34.4" x 51.9"
- Shipping Dimensions: 2311 mm x 1016 mm x 1588 mm
(L x W x H) 91.0" x 40.0" x 62.5"
- Net Weight: 526 kgs (1160.0 lbs)
- Shipping Weight²: 710 kgs (1566.0 lbs)
- Conveyor Speed: 0.23 m/s (44 ft/min) In Both Directions
- Conveyor Height: 730 mm (28.7") From Floor
- Conveyor Capacity: 165 kgs (363 lbs) Evenly Distributed Load
- Construction: Custom Steel Frame / Panels

Technical

- Sensitivity: 40 AWG Typical, 38 AWG Standard
- Spatial Resolution: 1.0 mm Horizontal, 1.0 mm Vertical
- Penetration¹: 39 mm Steel Typical, 37 mm Standard
- Contrast Sensitivity: 24 Visible Levels, 4096 Gray Level

X-Ray Generator

- Voltage: 160 kV Operating at 150 kV
- Tube Current: 0.7 mA
- Cooling: Sealed Di-Electric Oil Bath with Forced Air
- Duty Cycle: 100%, No Warm-Up Procedure Required
- Beam Direction: Diagonally Upward
- Detector: 1280 Channels in an L-Shaped Array

Computer

- Processor: Intel Core II Duo, 3.0 Ghz, 1333 MHz
- Memory: 2 GB RAM at 800 MHz
- Storage: 160 GB HDD
- Video Card: 256 MB Video Card, Dual Digital Display
- Platform: Windows XP Pro
- Backup: Uninterrupted Power Supply (20 min)

Video

- Display Type: Dual 19" LCD Color Monitors
- Display Resolution: 1280 x 1024; 24 bit/pixel Color

Environmental

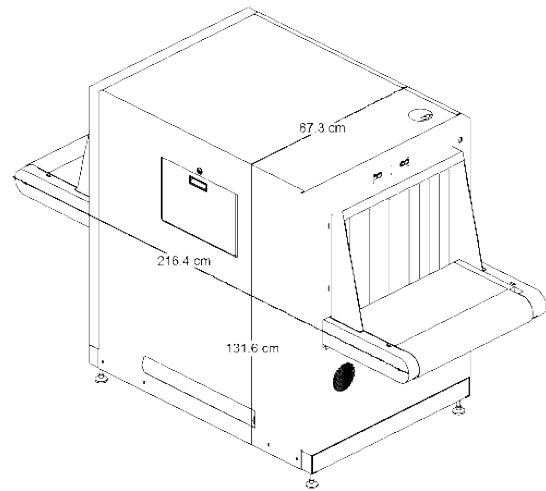
- Operating Temperature: 0°C - 40°C \ 32°F - 104°F
- Storage Temperature: -20°C - 60°C \ -4°F - 140°F
- Humidity: Up to 95% Non-Condensing

Electrical

- Power Requirements: 110VAC: 96-132 VAC, 60 HZ. 15 Amp Max
220VAC: 183-253 VAC, 50 Hz. 10 Amp Max

Health and Safety

- Compliant with USFDA, Center for Devices and Radiation Health Standards for Cabinet X-Ray Systems (21-CFR 1020.40).
- Typical Radiation leakage is less than 0.1 mR/hr (Leakage less than 0.5 mR/hr permitted by the Federal Standard).



Standard Features

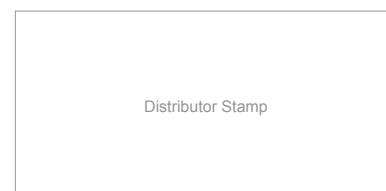
- 6 Color Imaging
- 9 Quadrant Zoom
- Atomic Z-Number Measurement
- Auto Image Archiving (50,000 Images)
- Baggage Counter
- Color and Black / White Imaging
- Continuous Scanning
- Continuous Zoom 2x to 32x
- Density Alert
- Edge-Enhancement Imaging
- Geometric Image Distortion Correction
- High Penetration Function
- Heavy Duty Roller Casters
- Image Annotation
- Image Review (100 Images)
- Manual Archive
- Material Discrimination
- Multi-Tier Accessibility
- Network Ready
- Organic/Inorganic Imaging
- Operator Training Program
- Picture Perfect
- Print Image Capable
- Pseudo Color
- Real-Time Image Manipulation
- Real-Time Self Diagnostics
- Reverse Monochrome
- Vertical Zoom Panning

Optional Features³

- 24" LCD Monitors
- Advance Auto Image Archiving (100,000 Images)
- ASTM 10 Stepwedge/ASTM F0792-01E2 Test Case
- Custom Paint
- Entry / Exit Roller Tables, 0.5 m increment
- Footmat
- Heavy Duty Rubber Casters Mobility Kit
- Local Language Support (Arabic, Chinese, French, Spanish, and more)
- Radiation Meter
- Remote Configuration
- Screener Assist Threat Detection Software
- Supervisor Workstation
- Suspect Search Station
- Threat Image Projection Software
- Tropical Kit (Up to 50°C / 122°F Operation)

Generator Upgrade

- Upgrade to 180 kV Generator
- Penetration¹: 41 mm Steel Typical, 39 mm Standard
- ASTM F792
 - Test 1: 40 AWG⁴
 - Test 3: 1 mm Horizontal/Vertical⁴
 - Test 4: 34 mm⁴



¹As tested on Astrophysics Inc. Test Piece.

²Weight of the System may vary depending on customization.

³Optional Accessories may affect lead time, price, and weight of XIS-6545. Please contact your Astrophysics Sales Representative for more information.

⁴Maximum Values on ASTM F792 Test Piece.

Due to continued product research and development, Astrophysics Inc. reserves the right to amend all technical specifications without prior notice.