

Place of testing: HUAWEI SAR/HAC Lab

NAM-LX9 LTE Band 2 20M QPSK 1RB 50 Offset 18900CH Right Tilt with Battery2-Second Antenna

DUT: NAM-LX9; Type: Smart Phone; Serial: DASY5

Communication System: UID 0, LTE-FDD (SC-FDMA, 20MHz, QPSK/16-QAM) (0); Frequency: 1880 MHz; Duty Cycle: 1:1

Medium parameters used: $f = 1880 \text{ MHz}$; $\sigma = 1.423 \text{ S/m}$; $\epsilon_r = 38.482$; $\rho = 1000 \text{ kg/m}^3$

Phantom section: Right Section

DASY Configuration:

- Probe: EX3DV4 - SN7350; ConvF(8.22, 8.22, 8.22) @ 1880 MHz; Calibrated: 2020-12-21
- Sensor-Surface: 1.4mm (Mechanical Surface Detection), $z = 1.0, 30.4$
- Electronics: DAE4 Sn1531; Calibrated: 2021-02-24
- Phantom: SAM7; Type: SAM; Serial: 1594
- DASY52 52.10.4(1527); SEMCAD X 14.6.14(7483)

Configuration/Head/Area Scan (9x14x1): Measurement grid: $dx=15\text{mm}$, $dy=15\text{mm}$
Maximum value of SAR (measured) = 0.693 W/kg

Configuration/Head/Zoom Scan (9x9x22)/Cube 0: Measurement grid: $dx=4.3\text{mm}$, $dy=4.3\text{mm}$, $dz=1.4\text{mm}$

Reference Value = 16.07 V/m ; Power Drift = 0.19 dB

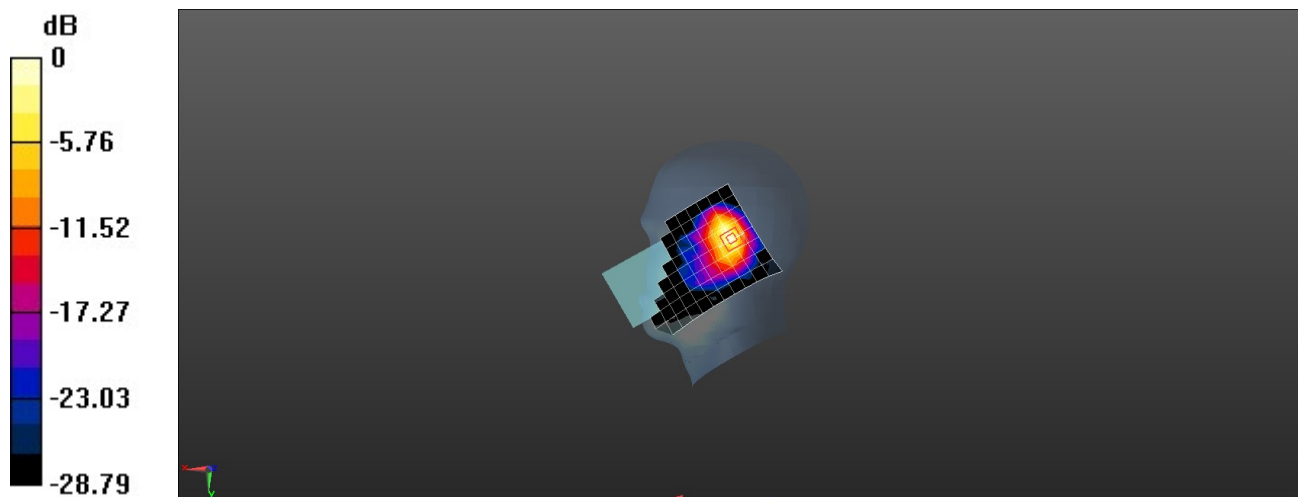
Peak SAR (extrapolated) = 0.979 W/kg

SAR(1 g) = 0.391 W/kg ; SAR(10 g) = 0.178 W/kg

Smallest distance from peaks to all points 3 dB below = 6.9 mm

Ratio of SAR at M2 to SAR at M1 = 76.3%

Maximum value of SAR (measured) = 0.699 W/kg



0 dB = 0.699 W/kg = -1.55 dBW/kg

Place of testing: HUAWEI SAR/HAC Lab

NAM-LX9 LTE Band 2 20M QPSK 1RB 50 Offset 18900CH Back Side 15mm with Battery2-Main Antenna

DUT: NAM-LX9; Type: Smart Phone; Serial: DASY5

Communication System: UID 0, LTE-FDD (SC-FDMA, 20MHz, QPSK/16-QAM) (0); Frequency: 1880 MHz; Duty Cycle: 1:1

Medium parameters used: $f = 1880 \text{ MHz}$; $\sigma = 1.423 \text{ S/m}$; $\epsilon_r = 38.482$; $\rho = 1000 \text{ kg/m}^3$

Phantom section: Flat Section

DASY Configuration:

- Probe: EX3DV4 - SN7350; ConvF(8.22, 8.22, 8.22) @ 1880 MHz; Calibrated: 2020-12-21
- Sensor-Surface: 1.4mm (Mechanical Surface Detection), $z = 1.0, 31.0$
- Electronics: DAE4 Sn1531; Calibrated: 2021-02-24
- Phantom: SAM7; Type: SAM; Serial: 1594
- DASY52 52.10.4(1527); SEMCAD X 14.6.14(7483)

Configuration/Body/Area Scan (9x14x1): Measurement grid: $dx=15\text{mm}$, $dy=15\text{mm}$

Maximum value of SAR (measured) = 0.257 W/kg

Configuration/Body/Zoom Scan (6x6x7)/Cube 0: Measurement grid: $dx=8\text{mm}$, $dy=8\text{mm}$, $dz=5\text{mm}$

Reference Value = 6.244 V/m ; Power Drift = 0.18 dB

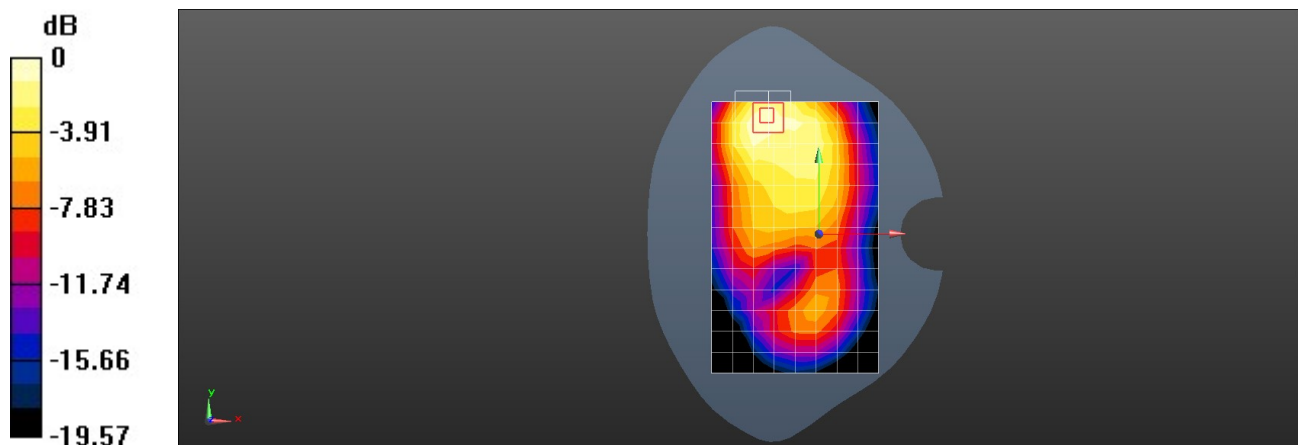
Peak SAR (extrapolated) = 0.320 W/kg

SAR(1 g) = 0.186 W/kg ; SAR(10 g) = 0.109 W/kg

Smallest distance from peaks to all points 3 dB below = 14.3 mm

Ratio of SAR at M2 to SAR at M1 = 58.4%

Maximum value of SAR (measured) = 0.271 W/kg



Place of testing: HUAWEI SAR/HAC Lab

NAM-LX9 LTE Band 2 20M QPSK 50%RB 25 Offset 18900CH Bottom Side 10mm= with Battery2-Main Antenna

DUT: NAM-LX9; Type: Smart Phone; Serial: DASY5

Communication System: UID 0, LTE-FDD (SC-FDMA, 20MHz, QPSK/16-QAM) (0); Frequency: 1880 MHz; Duty Cycle: 1:1

Medium parameters used: $f = 1880 \text{ MHz}$; $\sigma = 1.423 \text{ S/m}$; $\epsilon_r = 38.482$; $\rho = 1000 \text{ kg/m}^3$

Phantom section: Flat Section

DASY Configuration:

- Probe: EX3DV4 - SN7350; ConvF(8.22, 8.22, 8.22) @ 1880 MHz; Calibrated: 2020-12-21
- Sensor-Surface: 1.4mm (Mechanical Surface Detection), $z = 1.0, 31.0$
- Electronics: DAE4 Sn1531; Calibrated: 2021-02-24
- Phantom: SAM7; Type: SAM; Serial: 1594
- DASY52 52.10.4(1527); SEMCAD X 14.6.14(7483)

Configuration/Body/Area Scan (6x10x1): Measurement grid: $dx=15\text{mm}$, $dy=15\text{mm}$

Maximum value of SAR (measured) = 0.832 W/kg

Configuration/Body/Zoom Scan (6x6x7)/Cube 0: Measurement grid: $dx=8\text{mm}$, $dy=8\text{mm}$, $dz=5\text{mm}$

Reference Value = 10.16 V/m ; Power Drift = 0.10 dB

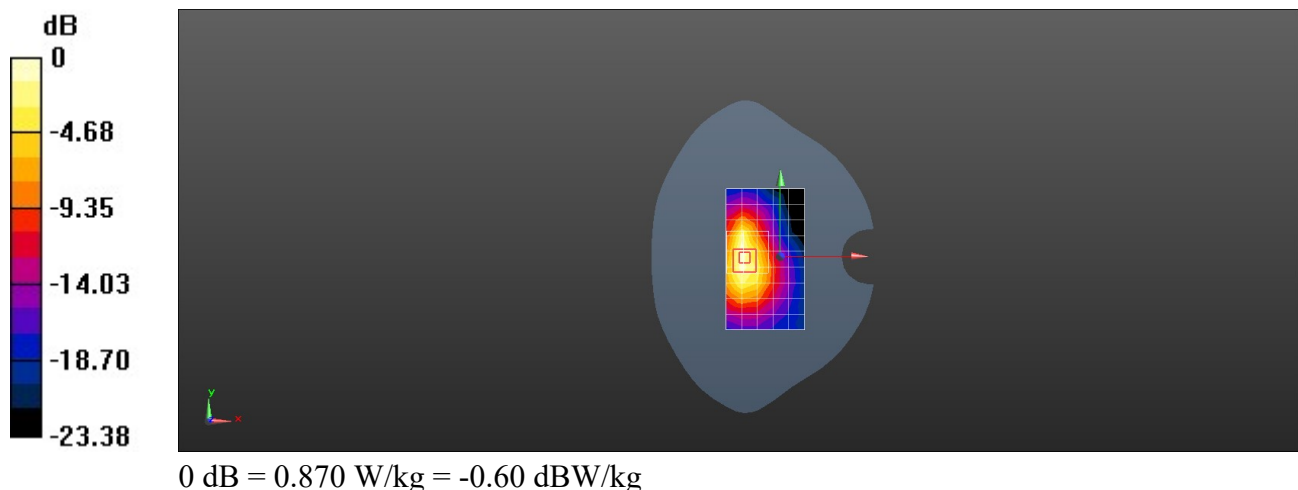
Peak SAR (extrapolated) = 1.05 W/kg

SAR(1 g) = 0.571 W/kg ; SAR(10 g) = 0.310 W/kg

Smallest distance from peaks to all points 3 dB below = 10.1 mm

Ratio of SAR at M2 to SAR at M1 = 55.1%

Maximum value of SAR (measured) = 0.870 W/kg



Place of testing: HUAWEI SAR/HAC Lab

NAM-LX9 LTE Band 5 10M QPSK 1RB 0 Offset 20450CH Left Cheek with Battery2-Main Antenna

DUT: NAM-LX9; Type: Smart Phone; Serial: SAR1

Communication System: UID 0, LTE-FDD (SC-FDMA, 10MHz, QPSK/16-QAM) (0); Frequency: 829 MHz; Duty Cycle: 1:1

Medium parameters used: $f = 829 \text{ MHz}$; $\sigma = 0.919 \text{ S/m}$; $\epsilon_r = 40.786$; $\rho = 1000 \text{ kg/m}^3$

Phantom section: Left Section

DASY Configuration:

- Probe: EX3DV4 - SN3744; ConvF(8.82, 8.82, 8.82) @ 829 MHz; Calibrated: 2021-07-28
- Sensor-Surface: 1.4mm (Mechanical Surface Detection), $z = 1.0, 31.0$
- Electronics: DAE4 Sn1492; Calibrated: 2021-07-28
- Phantom: SAM1; Type: SAM; Serial: 1475
- DASY52 52.10.4(1527); SEMCAD X 14.6.14(7483)

Configuration/Head/Area Scan (9x14x1): Measurement grid: $dx=15\text{mm}$, $dy=15\text{mm}$

Maximum value of SAR (measured) = 0.183 W/kg

Configuration/Head/Zoom Scan (5x5x7)/Cube 0: Measurement grid: $dx=8\text{mm}$, $dy=8\text{mm}$, $dz=5\text{mm}$

Reference Value = 4.050 V/m ; Power Drift = 0.18 dB

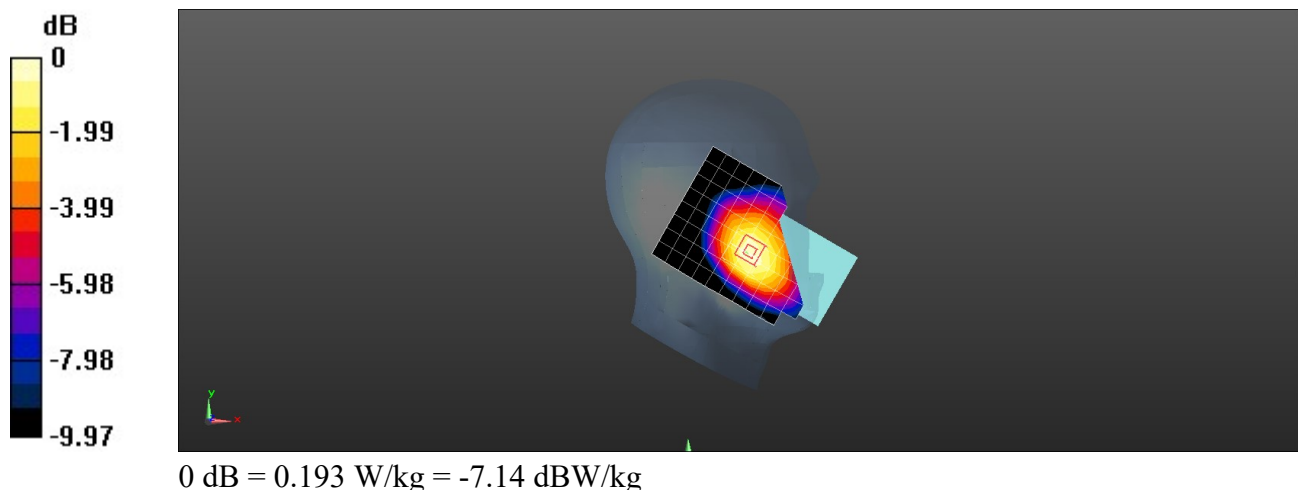
Peak SAR (extrapolated) = 0.209 W/kg

SAR(1 g) = 0.162 W/kg ; SAR(10 g) = 0.124 W/kg

Smallest distance from peaks to all points 3 dB below = 23.8 mm

Ratio of SAR at M2 to SAR at M1 = 78%

Maximum value of SAR (measured) = 0.193 W/kg



Place of testing: HUAWEI SAR/HAC Lab

NAM-LX9 LTE Band 5 10M QPSK 1RB 0 Offset 20450CH Back Side 15mm-Main Antenna

DUT: NAM-LX9; Type: Smart Phone; Serial: SAR1

Communication System: UID 0, LTE-FDD (SC-FDMA, 10MHz, QPSK/16-QAM) (0); Frequency: 829 MHz; Duty Cycle: 1:1

Medium parameters used: $f = 829 \text{ MHz}$; $\sigma = 0.919 \text{ S/m}$; $\epsilon_r = 40.786$; $\rho = 1000 \text{ kg/m}^3$

Phantom section: Flat Section

DASY Configuration:

- Probe: EX3DV4 - SN3744; ConvF(8.82, 8.82, 8.82) @ 829 MHz; Calibrated: 2021-07-28
- Sensor-Surface: 1.4mm (Mechanical Surface Detection), $z = 1.0, 31.0$
- Electronics: DAE4 Sn1492; Calibrated: 2021-07-28
- Phantom: SAM1; Type: SAM; Serial: 1475
- DASY52 52.10.4(1527); SEMCAD X 14.6.14(7483)

Configuration/Body/Area Scan (9x14x1): Measurement grid: $dx=15\text{mm}$, $dy=15\text{mm}$

Maximum value of SAR (measured) = 0.287 W/kg

Configuration/Body/Zoom Scan (6x6x7)/Cube 0: Measurement grid: $dx=8\text{mm}$, $dy=8\text{mm}$, $dz=5\text{mm}$

Reference Value = 16.12 V/m ; Power Drift = -0.05 dB

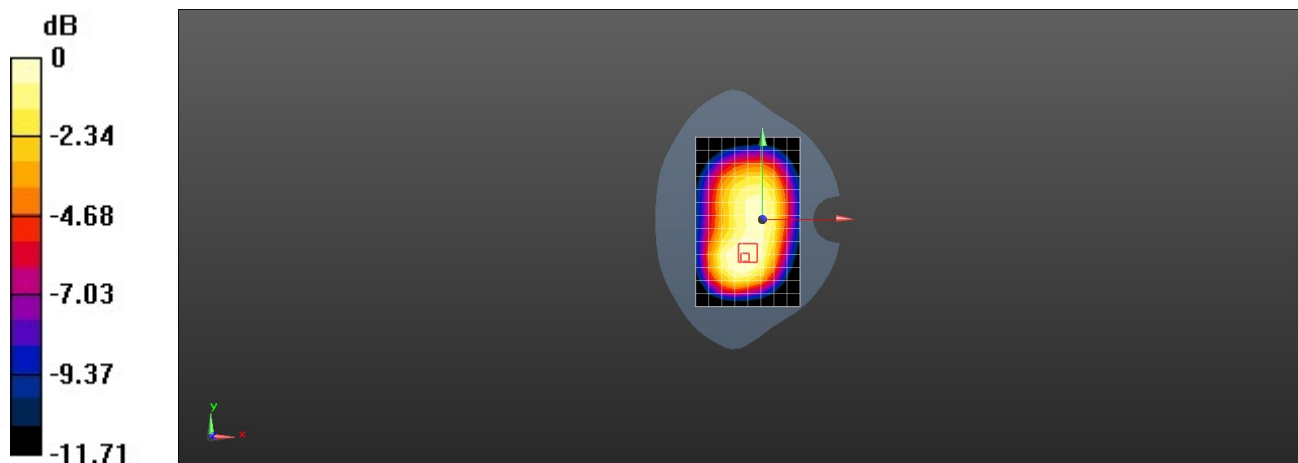
Peak SAR (extrapolated) = 0.302 W/kg

SAR(1 g) = 0.213 W/kg ; SAR(10 g) = 0.154 W/kg

Smallest distance from peaks to all points 3 dB below = 29.8 mm

Ratio of SAR at M2 to SAR at M1 = 69.5%

Maximum value of SAR (measured) = 0.271 W/kg



$0 \text{ dB} = 0.271 \text{ W/kg} = -5.68 \text{ dBW/kg}$

Place of testing: HUAWEI SAR/HAC Lab

NAM-LX9 LTE Band 5 10M QPSK 1RB 0 Offset 20450CH Back Side 10mm with Battery2-Main Antenna

DUT: NAM-LX9; Type: Smart Phone; Serial: SAR1

Communication System: UID 0, LTE-FDD (SC-FDMA, 10MHz, QPSK/16-QAM) (0); Frequency: 829 MHz; Duty Cycle: 1:1

Medium parameters used: $f = 829 \text{ MHz}$; $\sigma = 0.919 \text{ S/m}$; $\epsilon_r = 40.786$; $\rho = 1000 \text{ kg/m}^3$

Phantom section: Flat Section

DASY Configuration:

- Probe: EX3DV4 - SN3744; ConvF(8.82, 8.82, 8.82) @ 829 MHz; Calibrated: 2021-07-28
- Sensor-Surface: 1.4mm (Mechanical Surface Detection), $z = 1.0, 31.0$
- Electronics: DAE4 Sn1492; Calibrated: 2021-07-28
- Phantom: SAM1; Type: SAM; Serial: 1475
- DASY52 52.10.4(1527); SEMCAD X 14.6.14(7483)

Configuration/Body/Area Scan (9x14x1): Measurement grid: $dx=15\text{mm}$, $dy=15\text{mm}$

Maximum value of SAR (measured) = 0.397 W/kg

Configuration/Body/Zoom Scan (6x6x7)/Cube 0: Measurement grid: $dx=8\text{mm}$, $dy=8\text{mm}$, $dz=5\text{mm}$

Reference Value = 16.35 V/m ; Power Drift = -0.06 dB

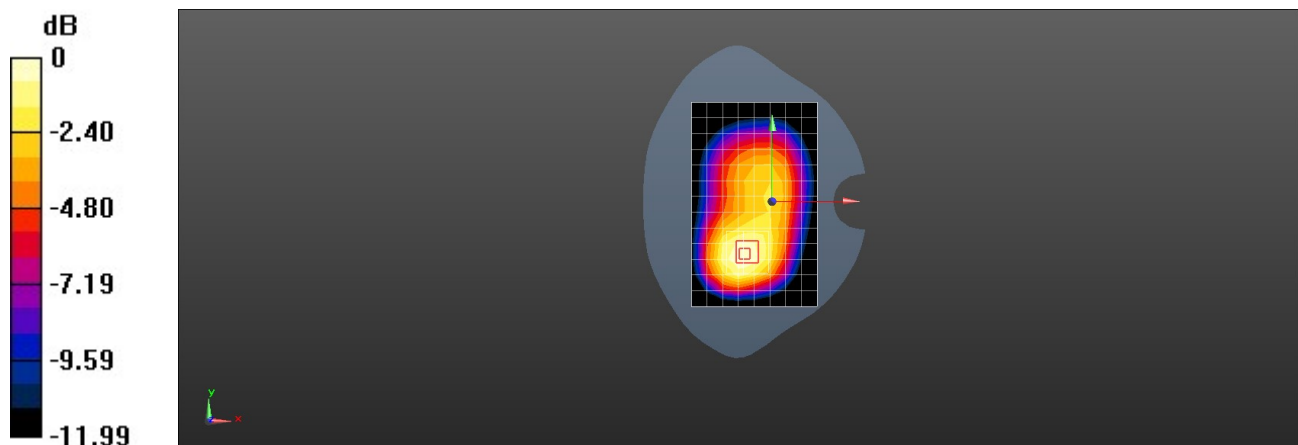
Peak SAR (extrapolated) = 0.463 W/kg

SAR(1 g) = 0.316 W/kg ; SAR(10 g) = 0.219 W/kg

Smallest distance from peaks to all points 3 dB below = 31.1 mm

Ratio of SAR at M2 to SAR at M1 = 67.7%

Maximum value of SAR (measured) = 0.411 W/kg



0 dB = 0.411 W/kg = -3.86 dBW/kg

Place of testing: HUAWEI SAR/HAC Lab

NAM-LX9 LTE Band 7 20M QPSK 50%RB 25 Offset 20850CH Right Tilt with Battery2-Second Antenna

DUT: NAM-LX9; Type: Smart Phone; Serial: DASY5

Communication System: UID 0, LTE-FDD (SC-FDMA, 20MHz, QPSK/16-QAM) (0); Frequency: 2510 MHz; Duty Cycle: 1:1

Medium parameters used: $f = 2510 \text{ MHz}$; $\sigma = 1.891 \text{ S/m}$; $\epsilon_r = 38.02$; $\rho = 1000 \text{ kg/m}^3$

Phantom section: Right Section

DASY Configuration:

- Probe: EX3DV4 - SN7350; ConvF(7.5, 7.5, 7.5) @ 2510 MHz; Calibrated: 2020-12-21
- Sensor-Surface: 1.4mm (Mechanical Surface Detection), $z = 1.0, 31.0$
- Electronics: DAE4 Sn1531; Calibrated: 2021-02-24
- Phantom: SAM7; Type: SAM; Serial: 1594
- DASY52 52.10.4(1527); SEMCAD X 14.6.14(7483)

Configuration/Head/Area Scan (10x17x1): Measurement grid: $dx=12\text{mm}$, $dy=12\text{mm}$

Maximum value of SAR (measured) = 0.842 W/kg

Configuration/Head/Zoom Scan (7x7x7)/Cube 0: Measurement grid: $dx=5\text{mm}$, $dy=5\text{mm}$, $dz=5\text{mm}$

Reference Value = 8.320 V/m ; Power Drift = 0.17 dB

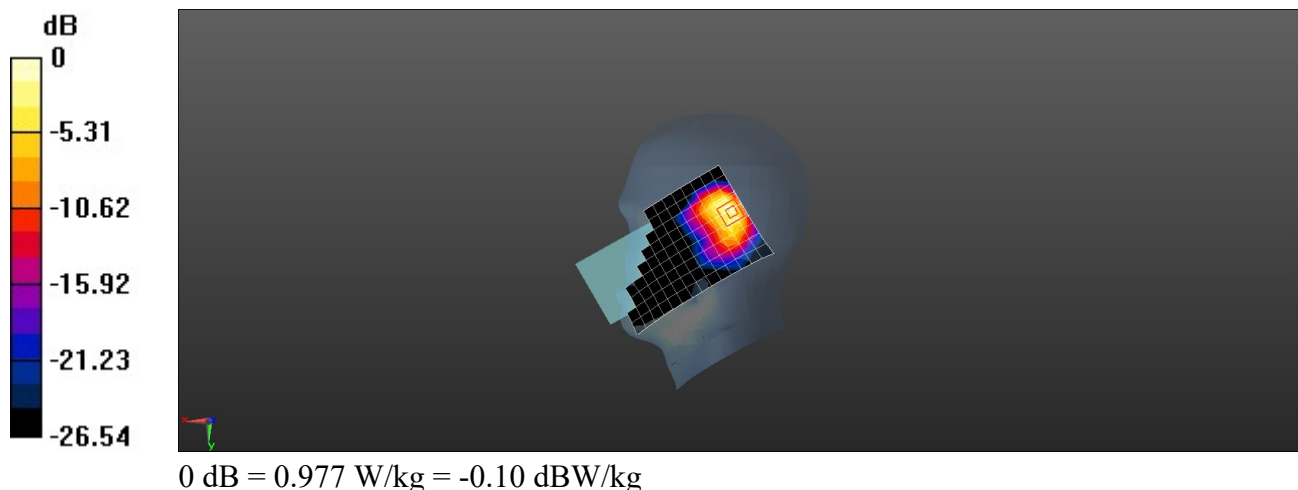
Peak SAR (extrapolated) = 1.26 W/kg

SAR(1 g) = 0.538 W/kg ; SAR(10 g) = 0.232 W/kg

Smallest distance from peaks to all points 3 dB below = 7.1 mm

Ratio of SAR at M2 to SAR at M1 = 41.7%

Maximum value of SAR (measured) = 0.977 W/kg



Place of testing: HUAWEI SAR/HAC Lab

NAM-LX9 LTE Band 7 20M QPSK 50%RB 0 Offset 20850CH Back Side 15mm with Battery2-Main Antenna

DUT: NAM-LX9; Type: Smart Phone; Serial: DASY5

Communication System: UID 0, LTE-FDD (SC-FDMA, 20MHz, QPSK/16-QAM) (0); Frequency: 2510 MHz; Duty Cycle: 1:1

Medium parameters used: $f = 2510$ MHz; $\sigma = 1.919$ S/m; $\epsilon_r = 38.52$; $\rho = 1000$ kg/m³

Phantom section: Flat Section

DASY Configuration:

- Probe: EX3DV4 - SN7350; ConvF(7.5, 7.5, 7.5) @ 2510 MHz; Calibrated: 2020-12-21
- Sensor-Surface: 1.4mm (Mechanical Surface Detection), $z = 1.0, 31.0$
- Electronics: DAE4 Sn1531; Calibrated: 2021-02-24
- Phantom: SAM7; Type: SAM; Serial: 1594
- DASY52 52.10.4(1527); SEMCAD X 14.6.14(7483)

Configuration/Body/Area Scan (9x14x1): Measurement grid: $dx=15$ mm, $dy=15$ mm

Maximum value of SAR (measured) = 0.339 W/kg

Configuration/Body/Zoom Scan (10x9x7)/Cube 0: Measurement grid: $dx=5$ mm, $dy=5$ mm, $dz=5$ mm

Reference Value = 3.774 V/m; Power Drift = -0.13 dB

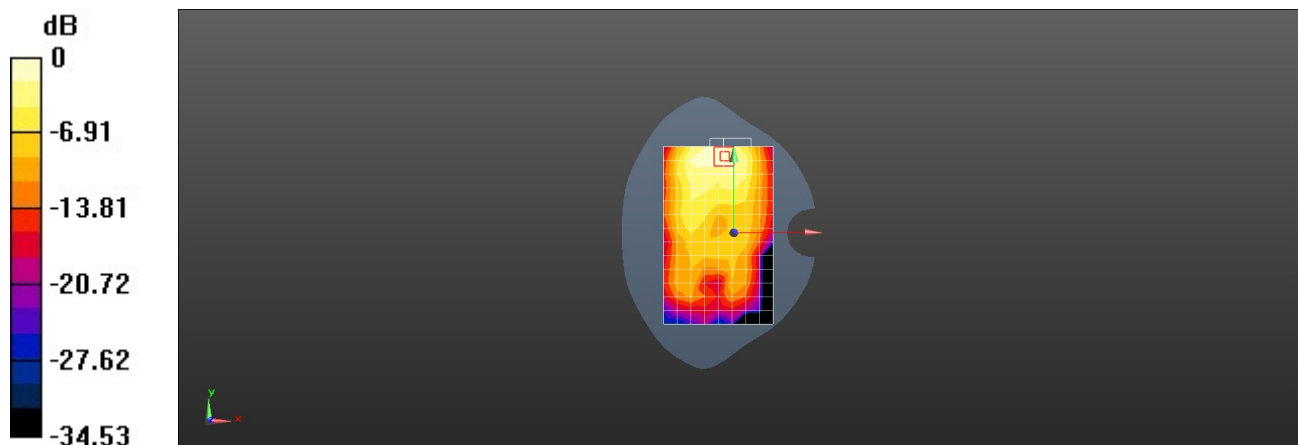
Peak SAR (extrapolated) = 0.449 W/kg

SAR(1 g) = 0.247 W/kg; SAR(10 g) = 0.134 W/kg

Smallest distance from peaks to all points 3 dB below = 13.6 mm

Ratio of SAR at M2 to SAR at M1 = 54.5%

Maximum value of SAR (measured) = 0.376 W/kg



0 dB = 0.376 W/kg = -4.24 dBW/kg

Place of testing: HUAWEI SAR/HAC Lab

NAM-LX9 LTE Band 7 20M QPSK 50%RB 0 Offset 20850CH Bottom Side 10mm with Battery2-Main Antenna

DUT: NAM-LX9; Type: Smart Phone; Serial: DASY5

Communication System: UID 0, LTE-FDD (SC-FDMA, 20MHz, QPSK/16-QAM) (0); Frequency: 2510 MHz; Duty Cycle: 1:1

Medium parameters used: $f = 2510 \text{ MHz}$; $\sigma = 1.919 \text{ S/m}$; $\epsilon_r = 38.52$; $\rho = 1000 \text{ kg/m}^3$

Phantom section: Flat Section

DASY Configuration:

- Probe: EX3DV4 - SN7350; ConvF(7.5, 7.5, 7.5) @ 2510 MHz; Calibrated: 2020-12-21
- Sensor-Surface: 1.4mm (Mechanical Surface Detection), $z = 1.0, 31.0$
- Electronics: DAE4 Sn1531; Calibrated: 2021-02-24
- Phantom: SAM7; Type: SAM; Serial: 1594
- DASY52 52.10.4(1527); SEMCAD X 14.6.14(7483)

Configuration/Body/Area Scan (9x14x1): Measurement grid: $dx=15\text{mm}$, $dy=15\text{mm}$

Maximum value of SAR (measured) = 0.714 W/kg

Configuration/Body/Zoom Scan (9x9x7)/Cube 0: Measurement grid: $dx=5\text{mm}$, $dy=5\text{mm}$, $dz=5\text{mm}$

Reference Value = 5.369 V/m ; Power Drift = 0.17 dB

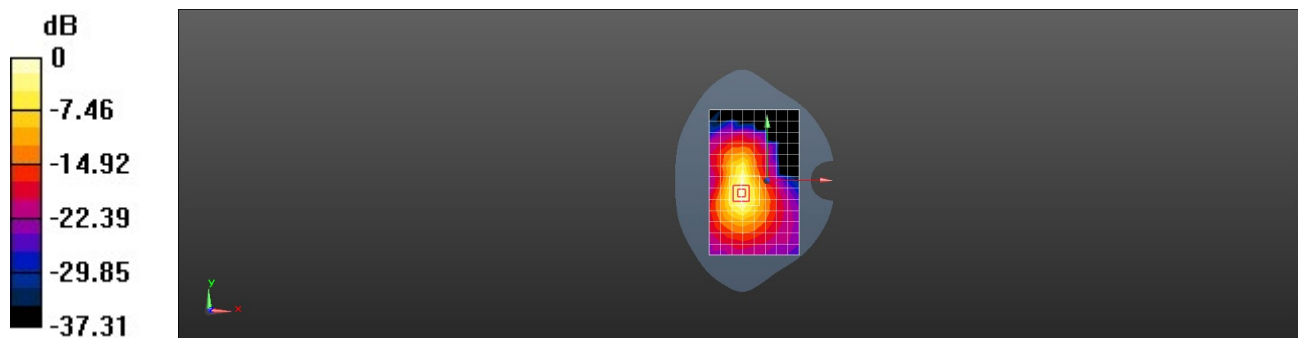
Peak SAR (extrapolated) = 0.959 W/kg

SAR(1 g) = 0.494 W/kg ; SAR(10 g) = 0.241 W/kg

Smallest distance from peaks to all points 3 dB below = 9.2 mm

Ratio of SAR at M2 to SAR at M1 = 52%

Maximum value of SAR (measured) = 0.784 W/kg



$0 \text{ dB} = 0.784 \text{ W/kg} = -1.06 \text{ dBW/kg}$

Place of testing: HUAWEI SAR/HAC Lab

NAM-LX9 LTE Band 12 10M QPSK 1RB 0 Offset 23095CH Left Cheek with Battery2-Main Antenna

DUT: NAM-LX9; Type: Smart Phone; Serial: SAR1

Communication System: UID 0, LTE-FDD (SC-FDMA, 10MHz, QPSK/16-QAM) (0); Frequency: 707.5 MHz; Duty Cycle: 1:1

Medium parameters used: $f = 707 \text{ MHz}$; $\sigma = 0.874 \text{ S/m}$; $\epsilon_r = 40.953$; $\rho = 1000 \text{ kg/m}^3$

Phantom section: Left Section

DASY Configuration:

- Probe: EX3DV4 - SN3744; ConvF(9.1, 9.1, 9.1) @ 707.5 MHz; Calibrated: 2021-07-28
- Sensor-Surface: 1.4mm (Mechanical Surface Detection), $z = 1.0, 31.0$
- Electronics: DAE4 Sn1492; Calibrated: 2021-07-28
- Phantom: SAM1; Type: SAM; Serial: 1475
- DASY52 52.10.4(1527); SEMCAD X 14.6.14(7483)

Configuration/Head/Area Scan (9x14x1): Measurement grid: $dx=15\text{mm}$, $dy=15\text{mm}$

Maximum value of SAR (measured) = 0.103 W/kg

Configuration/Head/Zoom Scan (5x5x7)/Cube 0: Measurement grid: $dx=8\text{mm}$, $dy=8\text{mm}$, $dz=5\text{mm}$

Reference Value = 2.856 V/m ; Power Drift = 0.01 dB

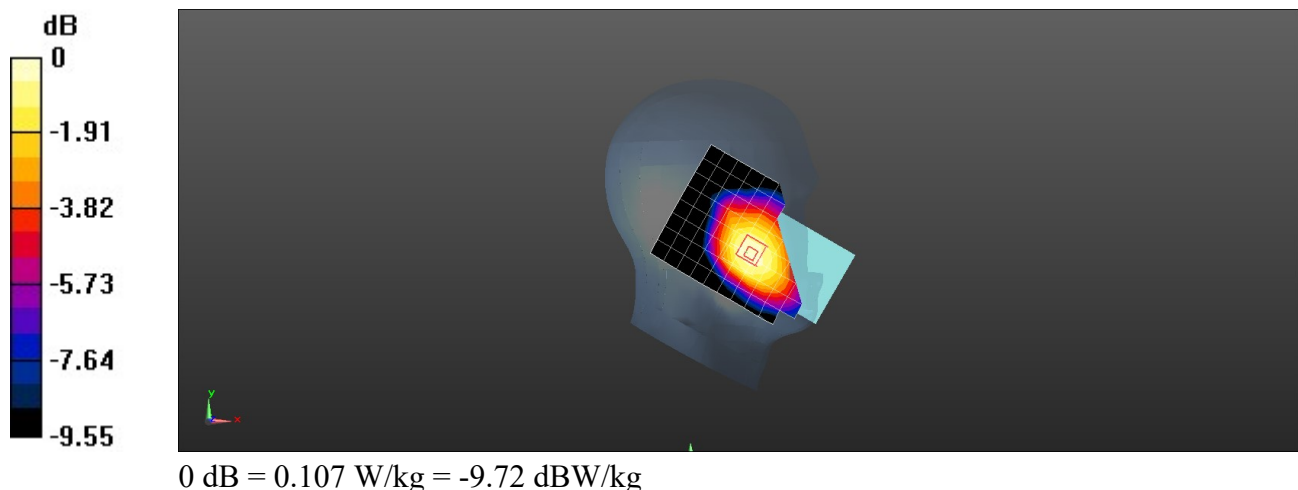
Peak SAR (extrapolated) = 0.115 W/kg

SAR(1 g) = 0.091 W/kg ; SAR(10 g) = 0.070 W/kg

Smallest distance from peaks to all points 3 dB below = 25.1 mm

Ratio of SAR at M2 to SAR at M1 = 79.8%

Maximum value of SAR (measured) = 0.107 W/kg



Place of testing: HUAWEI SAR/HAC Lab

NAM-LX9 LTE Band 12 10M QPSK 1RB 0 Offset 23095CH Back Side 15mm with Battery2-Main Antenna

DUT: NAM-LX9; Type: Smart Phone; Serial: SAR1

Communication System: UID 0, LTE-FDD (SC-FDMA, 10MHz, QPSK/16-QAM) (0); Frequency: 707.5 MHz; Duty Cycle: 1:1

Medium parameters used: $f = 707 \text{ MHz}$; $\sigma = 0.874 \text{ S/m}$; $\epsilon_r = 40.953$; $\rho = 1000 \text{ kg/m}^3$

Phantom section: Flat Section

DASY Configuration:

- Probe: EX3DV4 - SN3744; ConvF(9.1, 9.1, 9.1) @ 707.5 MHz; Calibrated: 2021-07-28
- Sensor-Surface: 1.4mm (Mechanical Surface Detection), $z = 1.0, 31.0$
- Electronics: DAE4 Sn1492; Calibrated: 2021-07-28
- Phantom: SAM1; Type: SAM; Serial: 1475
- DASY52 52.10.4(1527); SEMCAD X 14.6.14(7483)

Configuration/Body/Area Scan (9x14x1): Measurement grid: $dx=15\text{mm}$, $dy=15\text{mm}$

Maximum value of SAR (measured) = 0.204 W/kg

Configuration/Body/Zoom Scan (6x6x7)/Cube 0: Measurement grid: $dx=8\text{mm}$, $dy=8\text{mm}$, $dz=5\text{mm}$

Reference Value = 15.46 V/m ; Power Drift = -0.05 dB

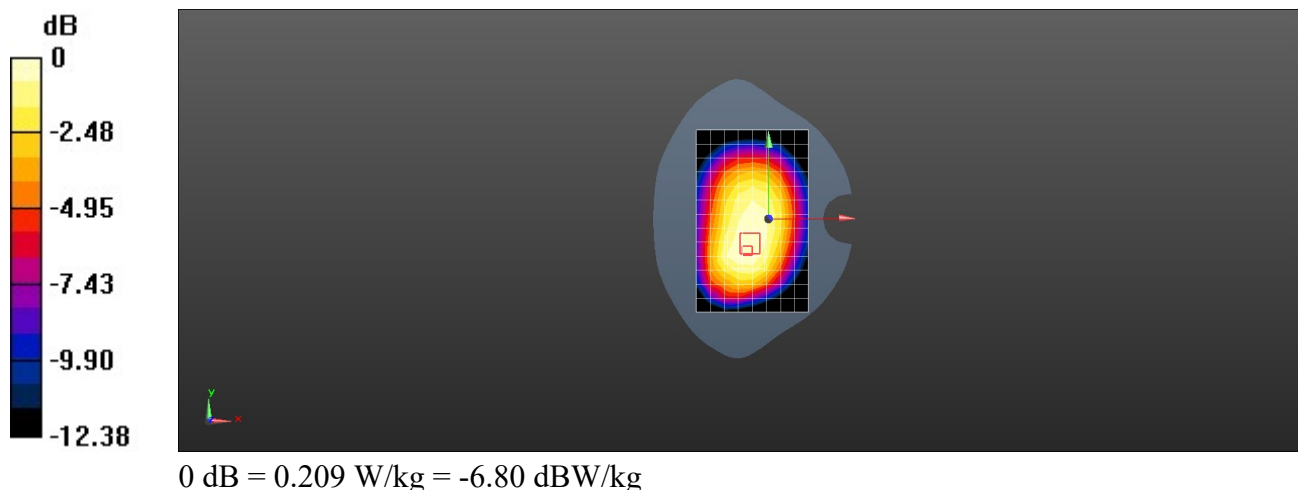
Peak SAR (extrapolated) = 0.229 W/kg

SAR(1 g) = 0.172 W/kg ; SAR(10 g) = 0.130 W/kg

Smallest distance from peaks to all points 3 dB below: Larger than measurement grid

Ratio of SAR at M2 to SAR at M1 = 73.8%

Maximum value of SAR (measured) = 0.209 W/kg



Place of testing: HUAWEI SAR/HAC Lab

NAM-LX9 LTE Band 12 10M QPSK 1RB 0 Offset 23095CH Back Side 10mm with Battery2-Main Antenna

DUT: NAM-LX9; Type: Smart Phone; Serial: SAR1

Communication System: UID 0, LTE-FDD (SC-FDMA, 10MHz, QPSK/16-QAM) (0); Frequency: 707.5 MHz; Duty Cycle: 1:1

Medium parameters used: $f = 707 \text{ MHz}$; $\sigma = 0.874 \text{ S/m}$; $\epsilon_r = 40.953$; $\rho = 1000 \text{ kg/m}^3$

Phantom section: Flat Section

DASY Configuration:

- Probe: EX3DV4 - SN3744; ConvF(9.1, 9.1, 9.1) @ 707.5 MHz; Calibrated: 2021-07-28
- Sensor-Surface: 1.4mm (Mechanical Surface Detection), $z = 1.0, 31.0$
- Electronics: DAE4 Sn1492; Calibrated: 2021-07-28
- Phantom: SAM1; Type: SAM; Serial: 1475
- DASY52 52.10.4(1527); SEMCAD X 14.6.14(7483)

Configuration/Body/Area Scan (9x14x1): Measurement grid: $dx=15\text{mm}$, $dy=15\text{mm}$

Maximum value of SAR (measured) = 0.278 W/kg

Configuration/Body/Zoom Scan (6x6x7)/Cube 0: Measurement grid: $dx=8\text{mm}$, $dy=8\text{mm}$, $dz=5\text{mm}$

Reference Value = 15.72 V/m ; Power Drift = -0.06 dB

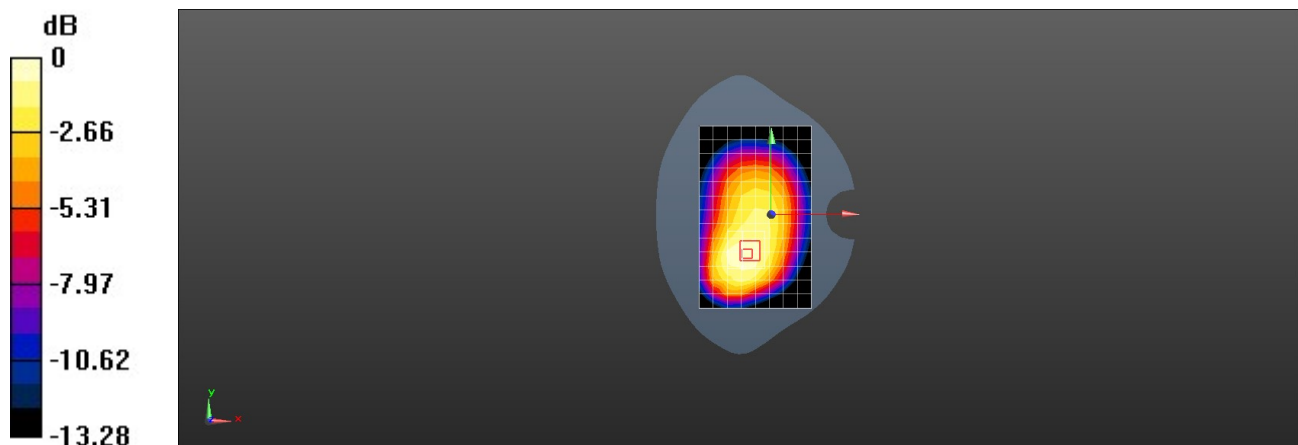
Peak SAR (extrapolated) = 0.321 W/kg

SAR(1 g) = 0.224 W/kg ; SAR(10 g) = 0.160 W/kg

Smallest distance from peaks to all points 3 dB below: Larger than measurement grid

Ratio of SAR at M2 to SAR at M1 = 70.5%

Maximum value of SAR (measured) = 0.282 W/kg



$0 \text{ dB} = 0.282 \text{ W/kg} = -5.50 \text{ dBW/kg}$

Place of testing: HUAWEI SAR/HAC Lab

NAM-LX9 LTE Band 26 15M QPSK 1RB 0 Offset 26765CH Left Cheek with Battery2-Main Antenna

DUT: NAM-LX9; Type: Smart Phone; Serial: SAR1

Communication System: UID 0, LTE-FDD (SC-FDMA, 15MHz, QPSK/16-QAM) (0); Frequency: 821.5 MHz; Duty Cycle: 1:1

Medium parameters used: $f = 821 \text{ MHz}$; $\sigma = 0.916 \text{ S/m}$; $\epsilon_r = 40.774$; $\rho = 1000 \text{ kg/m}^3$

Phantom section: Left Section

DASY Configuration:

- Probe: EX3DV4 - SN3744; ConvF(8.82, 8.82, 8.82) @ 821.5 MHz; Calibrated: 2021-07-28
- Sensor-Surface: 1.4mm (Mechanical Surface Detection), $z = 1.0, 31.0$
- Electronics: DAE4 Sn1492; Calibrated: 2021-07-28
- Phantom: SAM1; Type: SAM; Serial: 1475
- DASY52 52.10.4(1527); SEMCAD X 14.6.14(7483)

Configuration/Head/Area Scan (9x14x1): Measurement grid: $dx=15\text{mm}$, $dy=15\text{mm}$

Maximum value of SAR (measured) = 0.166 W/kg

Configuration/Head/Zoom Scan (5x5x7)/Cube 0: Measurement grid: $dx=8\text{mm}$, $dy=8\text{mm}$, $dz=5\text{mm}$

Reference Value = 3.814 V/m ; Power Drift = 0.13 dB

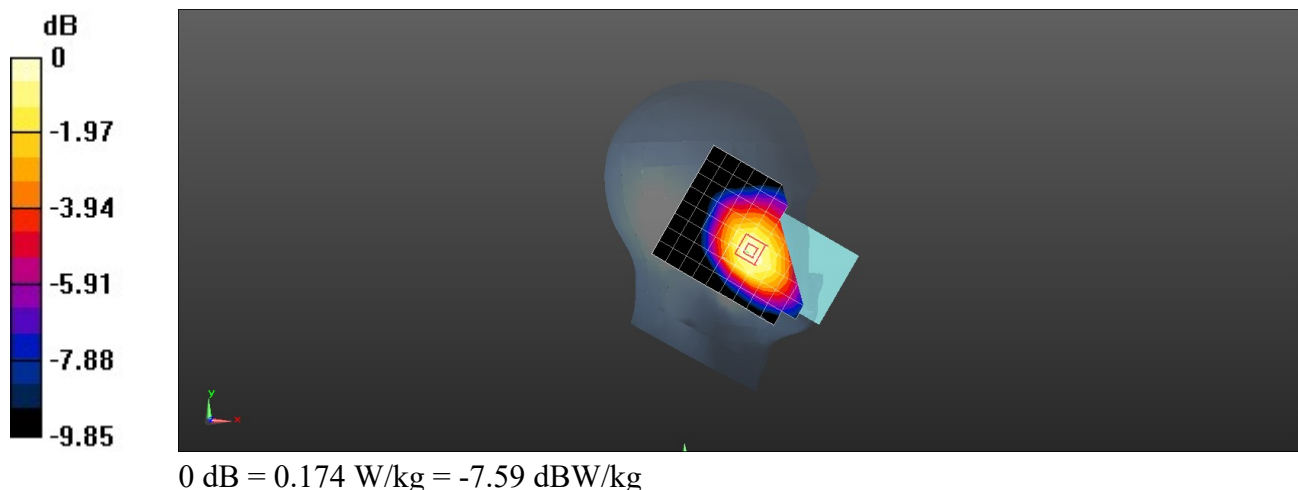
Peak SAR (extrapolated) = 0.188 W/kg

SAR(1 g) = 0.147 W/kg ; SAR(10 g) = 0.112 W/kg

Smallest distance from peaks to all points 3 dB below = 23.8 mm

Ratio of SAR at M2 to SAR at M1 = 78%

Maximum value of SAR (measured) = 0.174 W/kg



Place of testing: HUAWEI SAR/HAC Lab

NAM-LX9 LTE Band 26 15M QPSK 1RB 0 Offset 26765CH Back Side 15mm with Battery2-Main Antenna

DUT: NAM-LX9; Type: Smart Phone; Serial: SAR1

Communication System: UID 0, LTE-FDD (SC-FDMA, 15MHz, QPSK/16-QAM) (0); Frequency: 821.5 MHz; Duty Cycle: 1:1

Medium parameters used: $f = 821 \text{ MHz}$; $\sigma = 0.916 \text{ S/m}$; $\epsilon_r = 40.774$; $\rho = 1000 \text{ kg/m}^3$

Phantom section: Flat Section

DASY Configuration:

- Probe: EX3DV4 - SN3744; ConvF(8.82, 8.82, 8.82) @ 821.5 MHz; Calibrated: 2021-07-28
- Sensor-Surface: 1.4mm (Mechanical Surface Detection), $z = 1.0, 31.0$
- Electronics: DAE4 Sn1492; Calibrated: 2021-07-28
- Phantom: SAM1; Type: SAM; Serial: 1475
- DASY52 52.10.4(1527); SEMCAD X 14.6.14(7483)

Configuration/Body/Area Scan (9x14x1): Measurement grid: $dx=15\text{mm}$, $dy=15\text{mm}$

Maximum value of SAR (measured) = 0.250 W/kg

Configuration/Body/Zoom Scan (6x6x7)/Cube 0: Measurement grid: $dx=8\text{mm}$, $dy=8\text{mm}$, $dz=5\text{mm}$

Reference Value = 15.81 V/m ; Power Drift = -0.03 dB

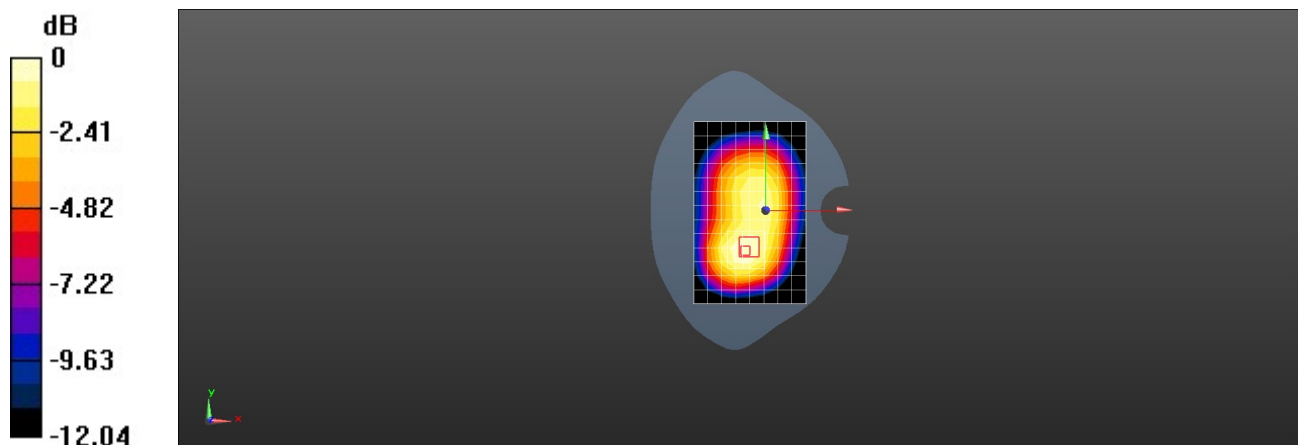
Peak SAR (extrapolated) = 0.292 W/kg

SAR(1 g) = 0.208 W/kg ; SAR(10 g) = 0.150 W/kg

Smallest distance from peaks to all points 3 dB below: Larger than measurement grid

Ratio of SAR at M2 to SAR at M1 = 70.2%

Maximum value of SAR (measured) = 0.263 W/kg



$0 \text{ dB} = 0.263 \text{ W/kg} = -5.80 \text{ dBW/kg}$

Place of testing: HUAWEI SAR/HAC Lab

NAM-LX9 LTE Band 26 15M QPSK 1RB 0 Offset 26765CH Back Side 10mm with Battery2-Main Antenna

DUT: NAM-LX9; Type: Smart Phone; Serial: SAR1

Communication System: UID 0, LTE-FDD (SC-FDMA, 15MHz, QPSK/16-QAM) (0); Frequency: 821.5 MHz; Duty Cycle: 1:1

Medium parameters used: $f = 821 \text{ MHz}$; $\sigma = 0.916 \text{ S/m}$; $\epsilon_r = 40.774$; $\rho = 1000 \text{ kg/m}^3$

Phantom section: Flat Section

DASY Configuration:

- Probe: EX3DV4 - SN3744; ConvF(8.82, 8.82, 8.82) @ 821.5 MHz; Calibrated: 2021-07-28
- Sensor-Surface: 1.4mm (Mechanical Surface Detection), $z = 1.0, 31.0$
- Electronics: DAE4 Sn1492; Calibrated: 2021-07-28
- Phantom: SAM1; Type: SAM; Serial: 1475
- DASY52 52.10.4(1527); SEMCAD X 14.6.14(7483)

Configuration/Body/Area Scan (9x14x1): Measurement grid: $dx=15\text{mm}$, $dy=15\text{mm}$

Maximum value of SAR (measured) = 0.390 W/kg

Configuration/Body/Zoom Scan (6x6x7)/Cube 0: Measurement grid: $dx=8\text{mm}$, $dy=8\text{mm}$, $dz=5\text{mm}$

Reference Value = 16.21 V/m ; Power Drift = -0.03 dB

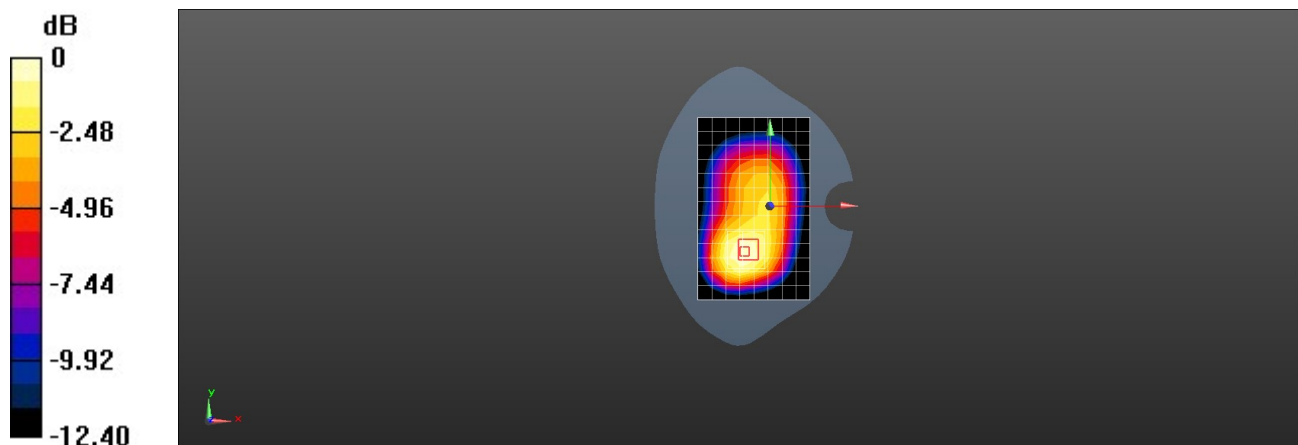
Peak SAR (extrapolated) = 0.458 W/kg

SAR(1 g) = 0.312 W/kg ; SAR(10 g) = 0.216 W/kg

Smallest distance from peaks to all points 3 dB below: Larger than measurement grid

Ratio of SAR at M2 to SAR at M1 = 67.4%

Maximum value of SAR (measured) = 0.407 W/kg



$0 \text{ dB} = 0.407 \text{ W/kg} = -3.91 \text{ dBW/kg}$

Place of testing: HUAWEI SAR/HAC Lab

NAM-LX9 LTE Band 38 20M QPSK 1RB 0 Offset 38000CH Right Cheek with Battery2-Main Antenna

DUT: NAM-LX9; Type: Smart Phone; Serial: DASY5

Communication System: UID 0, LTE-TDD (SC-FDMA, 20MHz, QPSK/16-QAM) (0); Frequency: 2595 MHz; Duty Cycle: 1:1.57943

Medium parameters used: $f = 2595$ MHz; $\sigma = 1.956$ S/m; $\epsilon_r = 37.834$; $\rho = 1000$ kg/m³

Phantom section: Right Section

DASY Configuration:

- Probe: EX3DV4 - SN7350; ConvF(7.5, 7.5, 7.5) @ 2595 MHz; Calibrated: 2020-12-21
- Sensor-Surface: 1.4mm (Mechanical Surface Detection), $z = 1.0, 31.0$
- Electronics: DAE4 Sn1531; Calibrated: 2021-02-24
- Phantom: SAM7; Type: SAM; Serial: 1594
- DASY52 52.10.4(1527); SEMCAD X 14.6.14(7483)

Configuration/Head/Area Scan (10x17x1): Measurement grid: $dx=12$ mm, $dy=12$ mm

Maximum value of SAR (measured) = 0.166 W/kg

Configuration/Head/Zoom Scan (7x7x7)/Cube 0: Measurement grid: $dx=5$ mm, $dy=5$ mm, $dz=5$ mm

Reference Value = 2.547 V/m; Power Drift = 0.15 dB

Peak SAR (extrapolated) = 0.217 W/kg

SAR(1 g) = 0.115 W/kg; SAR(10 g) = 0.059 W/kg

Smallest distance from peaks to all points 3 dB below = 9.8 mm

Ratio of SAR at M2 to SAR at M1 = 55.1%

Maximum value of SAR (measured) = 0.180 W/kg

