

# | Remote Access

Cloud-based access to your  
connected devices

# Target groups and objectives

## Target groups

- Desigo Ambassadors & RSS
- Solution Partners
- End customers

## Objectives

- Give an information about Remote Access
- Explain main usage of Remote Access application for Desigo PXC4-5 controllers and Intelligent Valve
- Provide use cases to explain benefit of using Desigo Remote Access Applications

## Before we start

- These slides can be used as a customer ppt
- Please adjust the presentation and related information according to your needs and target groups
- Please refer to Fact for detailed information and more features
- In the future more functions will be available for Remote Access application. This deck will be updated accordingly

# Challenges of today



## VPN Technology

- VPN has a lack of universal accessibility
- Devices are prone to vulnerability
- Declining market acceptance
- High maintenance costs



## Cost of Time & Travel

- Even minor engineering and programming changes require travelling
- Response time is critical to maintain the business continuity
- Providing customer support in time is essential



## Limited Expertise

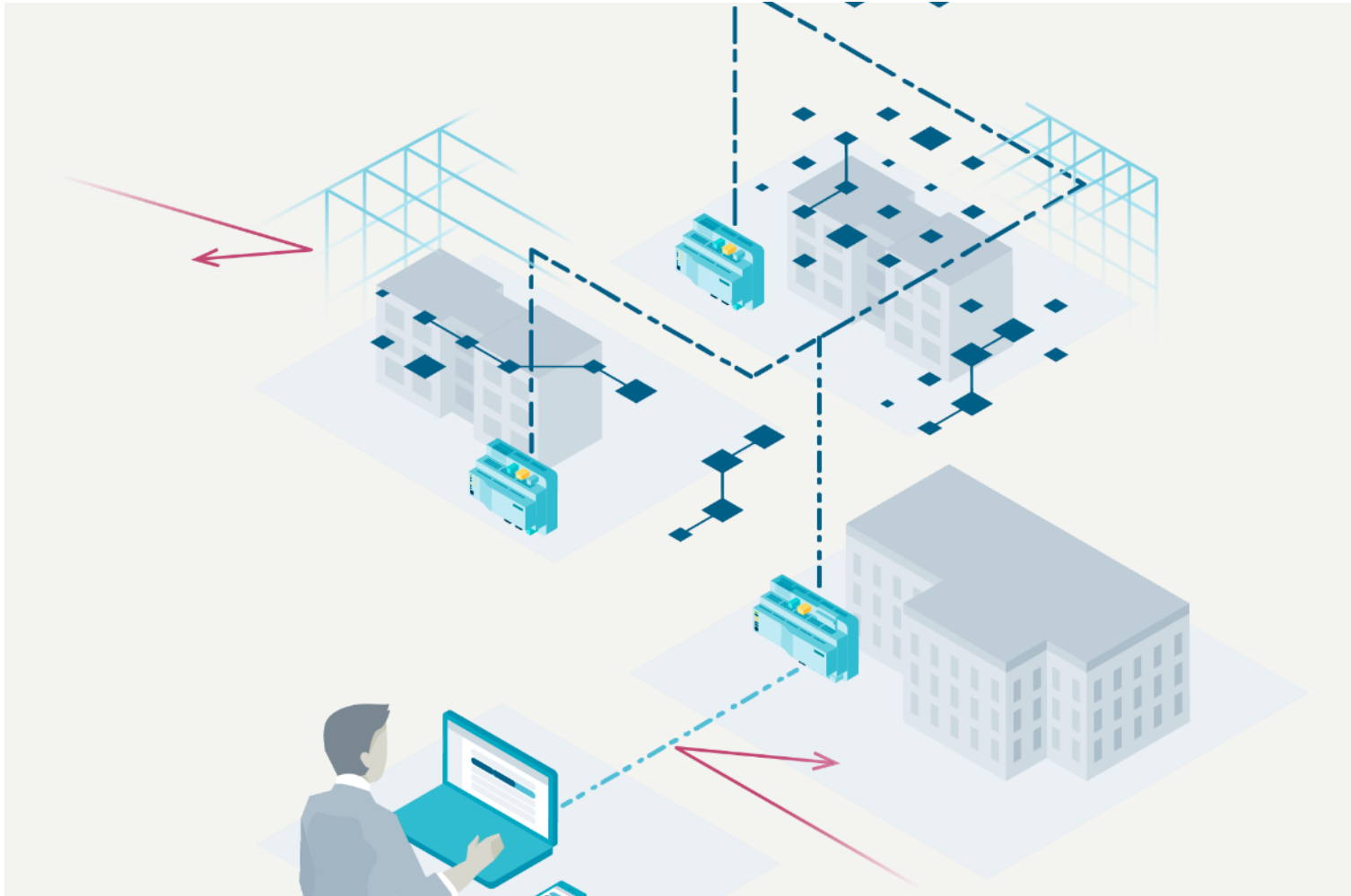
- Expert know-how for advanced troubleshooting is needed
- Collecting and sharing relevant diagnostics data is requested
- Not able to delegating the current tasks to other team members is delaying the projects



# Desigo Remote Access

Cloud-based access to your  
Desigo controllers

## Desigo Remote Access



## Desigo Remote Access offers:

**Engineering, operation and monitoring from remote**

Access your system.  
Anytime, from anywhere thanks to an integrated cloud connectivity and onboard web interface

# Desigo Remote Access offers:



## Engineer/Technician

Web Browser

1

Account Manager    Asset Manager

User and Device Management

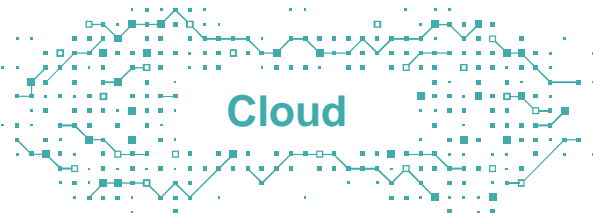
2

Secure access to web interface of connected devices

ABT Site

3

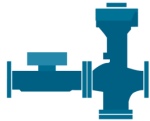
Engineering, Program and Commissioning



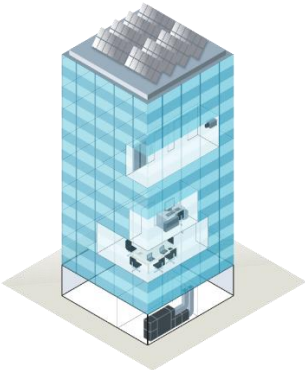
Desigo CC



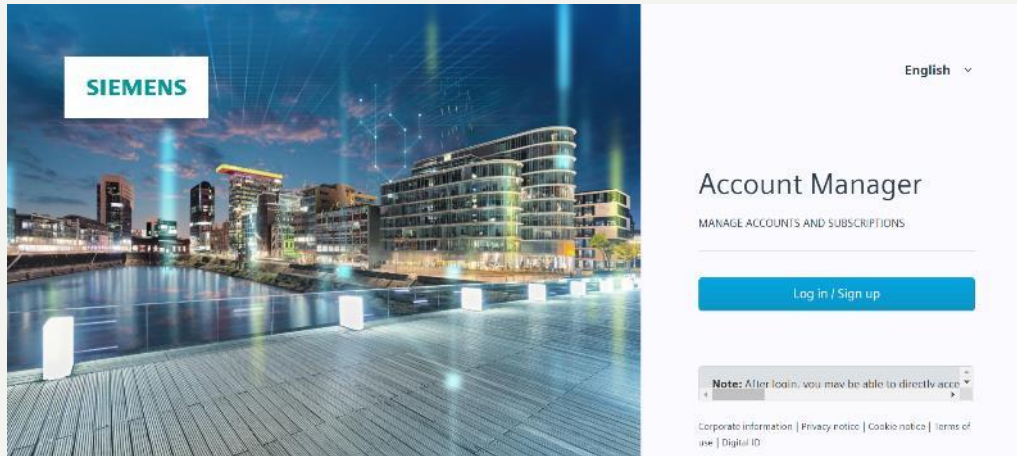
3<sup>rd</sup> Party



ABT site

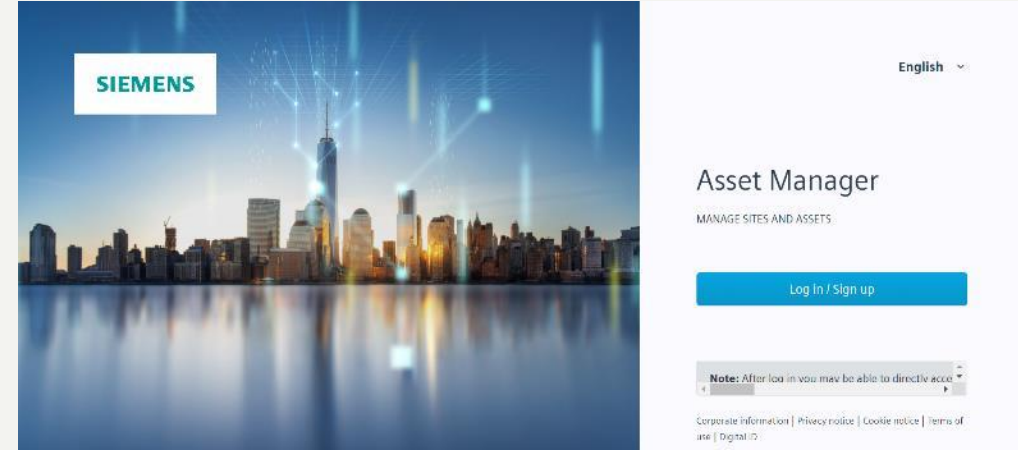


# 1- User and Device Management



## Manage Accounts and Subscriptions

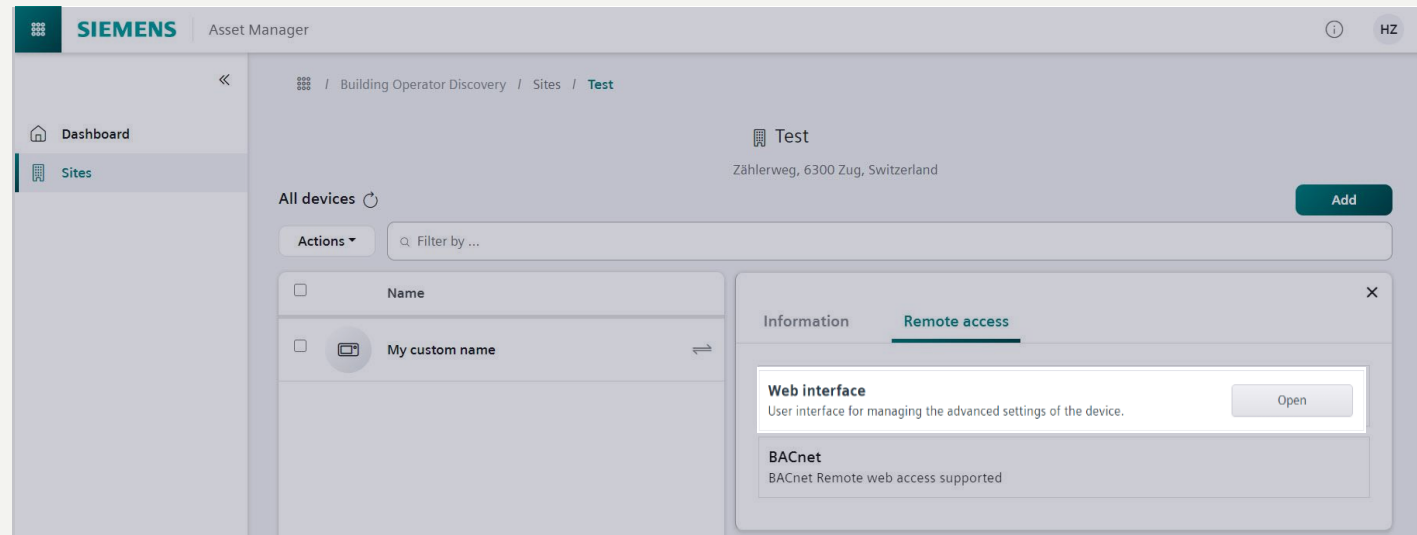
- Manage your subscription
- Create your company
- Invite your colleagues



## Manage Sites and Assets

- Add sites and devices
- Enter Activation key of devices
- Access Web Interface

## 2- Web Interface



### Secure access to the web interface of connected devices

- Data point commanding (local and system wide\*)
- Event Management
- Configure Scheduler



## 3- ABT Site

The screenshot displays the Siemens ABT Site - CCloudIntegration software interface. The main window is titled "Siemens - ABT Site - CCloudIntegration" and features a navigation bar with tabs for "Projects", "Building", "Startup", "Advanced", and "Settings". The "Startup" tab is active, showing a sidebar with options: "Configure and download", "Global functions", "Export", and "Commissioning and diagnostics". The main area is divided into two panels: "Engineered devices" and "Discovered devices".

The "Engineered devices" panel shows a "Work package" dropdown set to "All devices" and a "Load..." button. Below is a table with columns: "To do", "Auth", "Name", "Location", "Equip-ID", and "De". The table contains two rows of data:

To do	Auth	Name	Location	Equip-ID	De
Download		AS_Cloud02	B_01'A_01	02	PX
Download		AS_Cloud03	B_01'A_01	03	PX

The "Discovered devices" panel shows a "Discovered devices" count of 0 and "Cloud available devices" count of 2. It includes an "Organizations" dropdown, "Connect", and "Refresh" buttons. Below is a table with columns: "Device name", "Device type", and "Serial number". The table contains two rows of data:

Device name	Device type	Serial number
testname PXC5	PXC5.E003	1400052B03
andis pxc4 AS02	PXC4.E16	14000526A8



## Engineer, Program and Commission

- Easy connection via the cloud
- Access all devices in your account remotely
- Work online with the device like in a local network

# Who do we target?



**Solution partners  
experts**

**Target Groups**



**System integrators  
technicians**



**Facility managers  
(with basic web  
interface)**



**Remote BMS control  
market**

**Target market**

## Use case 1

### Easy onboarding of new engineer

Rita, a new colleague joins a company and John should onboard her soon. She needs user rights to access the current projects but how?

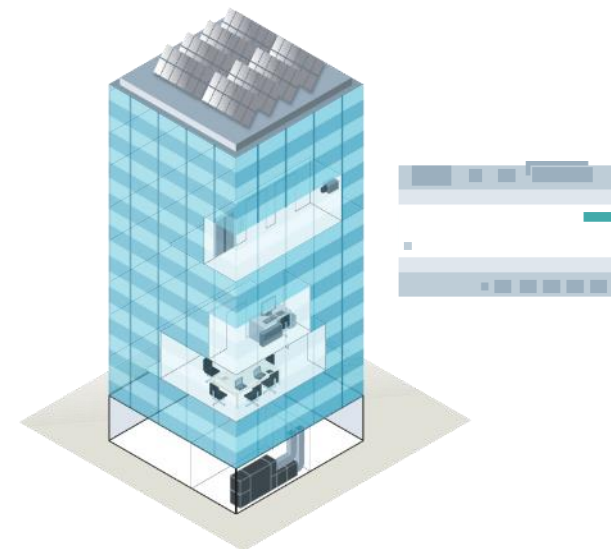
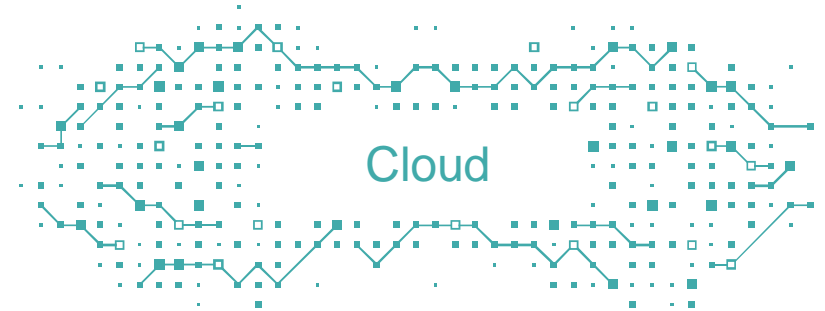
Soon, she needs to change the scheduler. How will she do it in this short notice?



John- Administrator



Rita- New Colleague



## Solution 1

### Easy onboarding of new engineer

- John invites Rita to the company via Account Manager
- John assigns her the required access
- Rita accesses the site via Asset Manager
- She access the web interface and make the changes in the scheduler

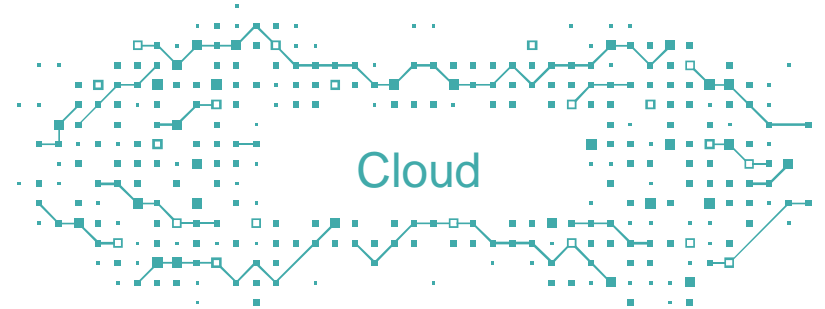


## Use case 2

### Remote operations for basic tasks

A customer has maintenance activity planned and asks Rita to help to suppress all events on that site for the next 24 hours.

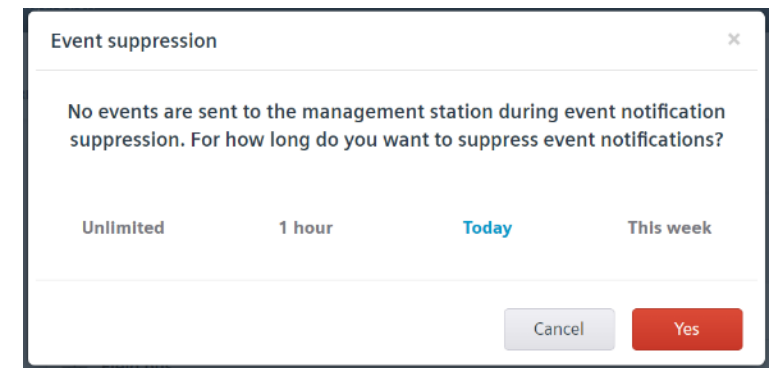
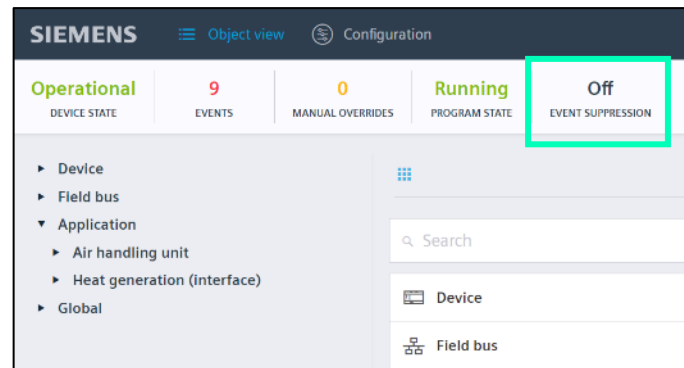
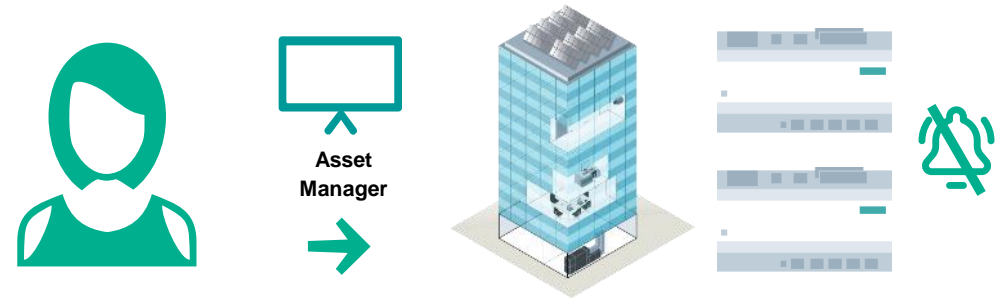
Does she need to travel?



## Solution 2

### Remote operations for basic tasks

- Access remotely to customer site via asset manager
- Initiate connection via Web Interface
- Activate the alarm suppression option

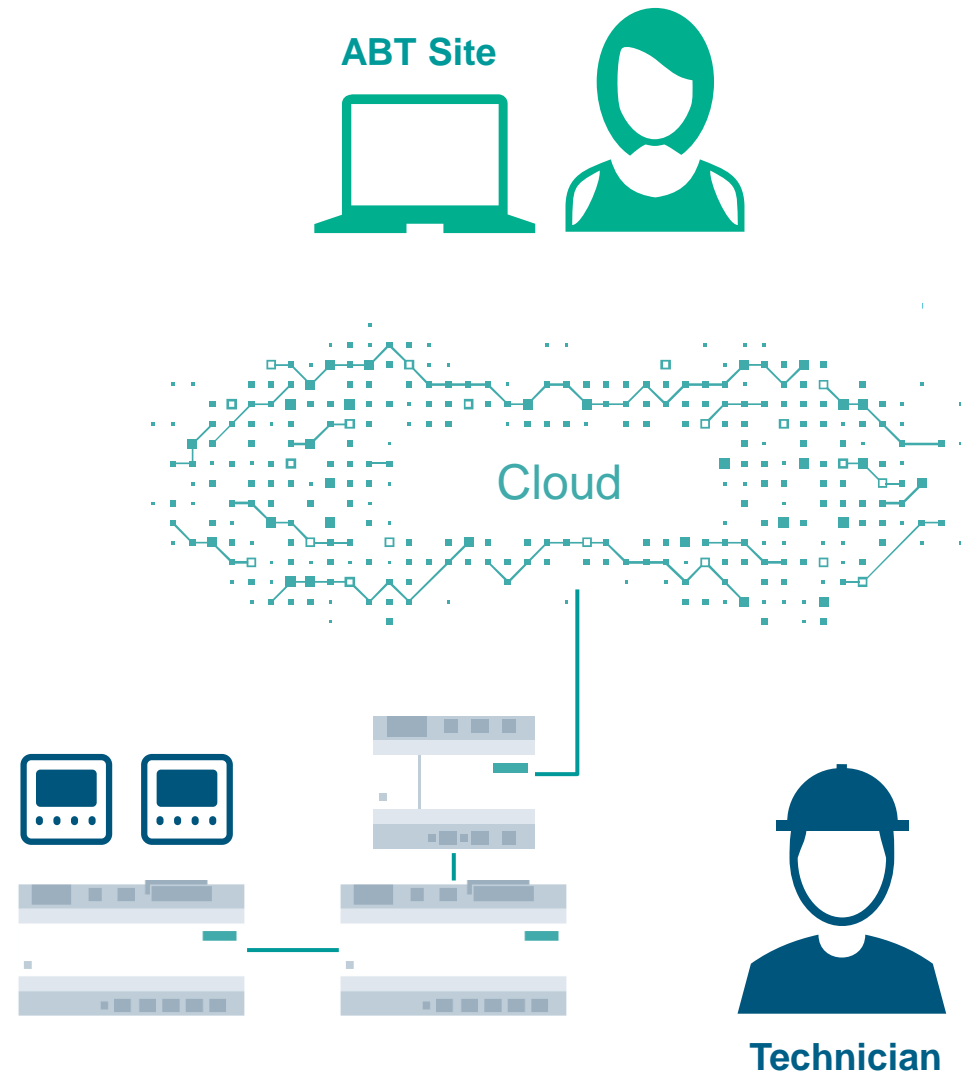


## Use case 3

### Remote engineering and commissioning support

A customer would like to monitor energy consumption therefore needs to add energy meters to the current project.

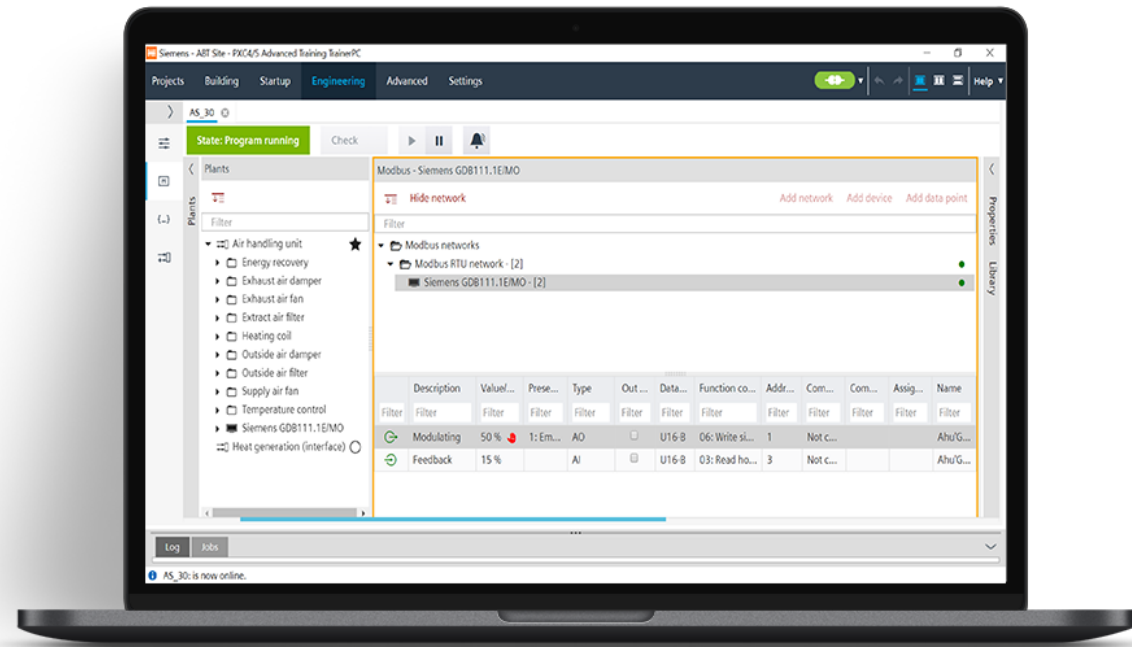
The technician has already installed the meters and asks Rita to engineer and commission them from remote.



## Solution 3

# Remote engineering and commissioning support

- Add Modbus devices from the library in ABT Site
- Configure the devices
- Load the configuration devices and test them online



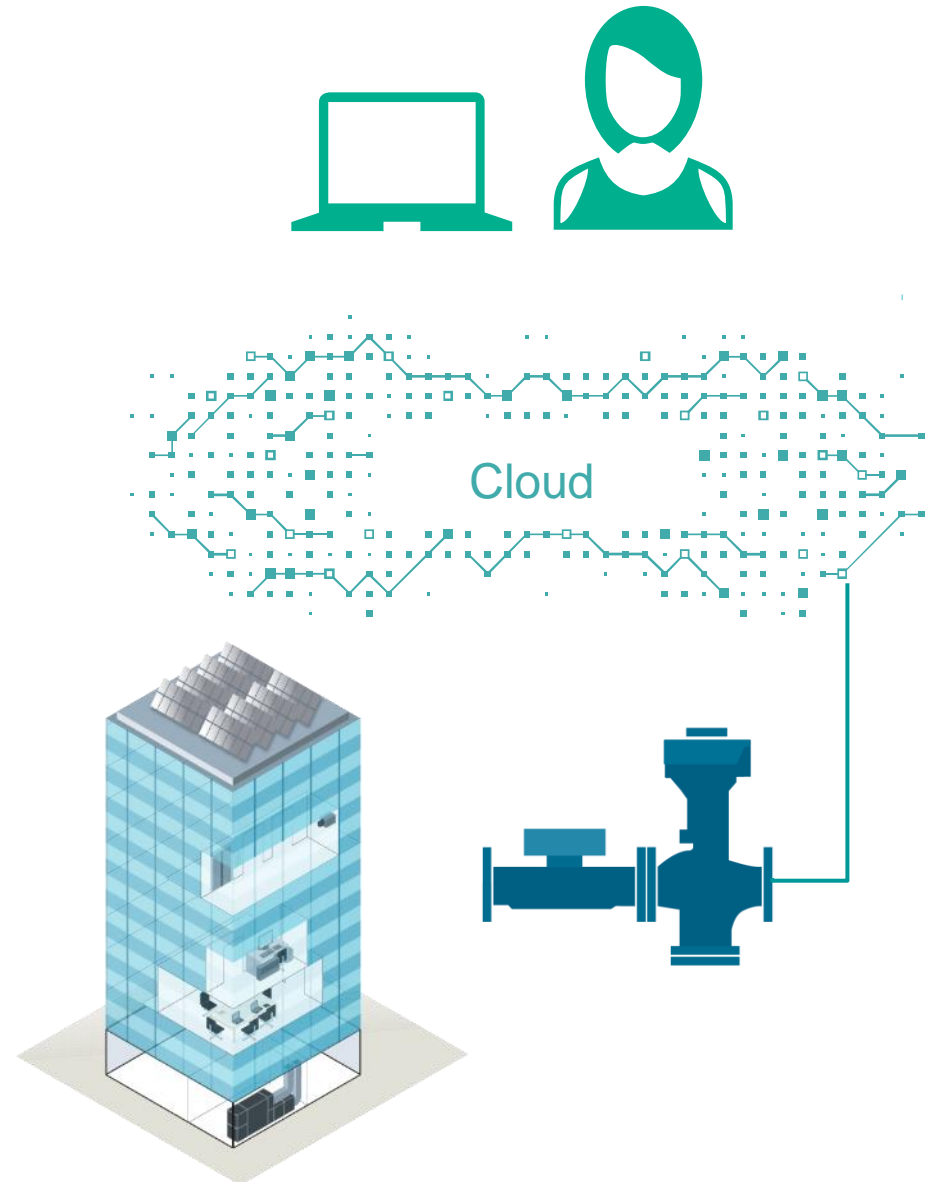


## Use case 4

### Remote operations for intelligent valve

The building' users complain about a low temperature in the rooms of the site. They ask Rita to increase the temperature in a short time.

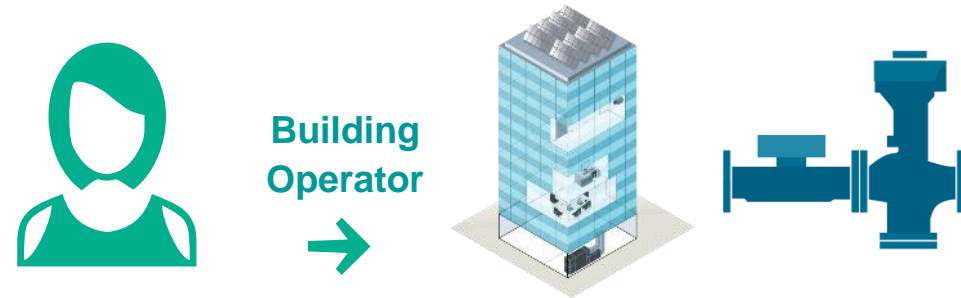
How can she rapidly solve the issue?



## Solution 4

### Remote operations for intelligent valve

- Access remotely to customer site via Building Operator
- Act on the setpoints connected to the intelligent valve
- Change the minimum volume flow



Siemens CS Cloud - Rack 4 - EV-100.E - iValve  
Zählerweg 5, 6300 Zug, Schweiz

mi

Name ^	Description	
FDV7301	FDV7301 - Siemens CS Cloud - EV-100.E	23 Weeks
B0600'R'Fir003'R7101x0100'HVAC'VivCti'EnTrtLm	Enable return temperature limitation	No
B0600'R'Fir003'R7101x0100'HVAC'VivCti'EnVfiMin	Enable minimum volume flow	No
B0600'R'Fir003'R7101x0100'HVAC'VivCti'VfiMin	Minimum volume flow	0 m <sup>3</sup> /h

Minimum volume flow  
0 m<sup>3</sup>/h

Manual override ^

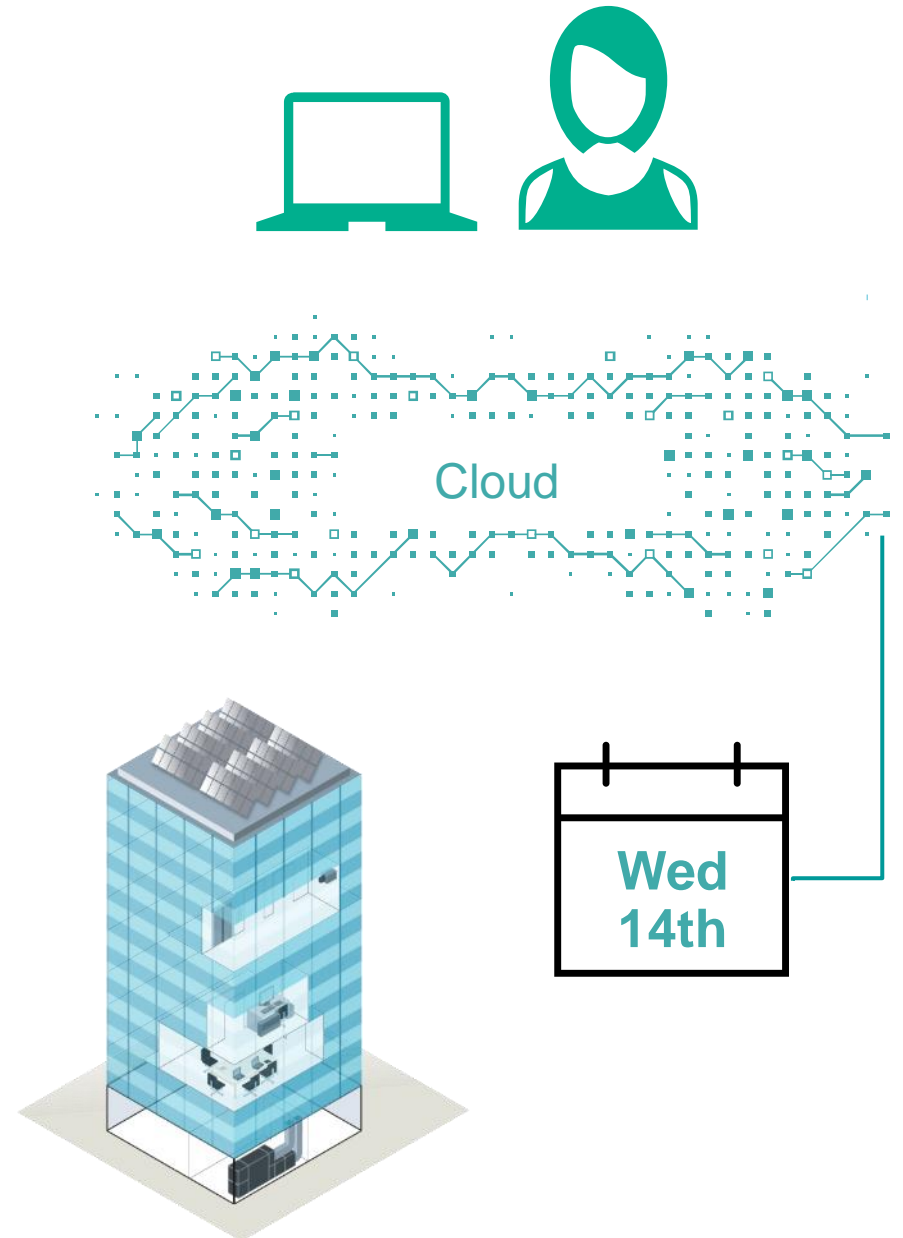
- 14 + × ✓

## Use case 5

### Remote operations for scheduling

A customer has an external company event next Wednesday and asks Rita to reduce the heating on site for the day.

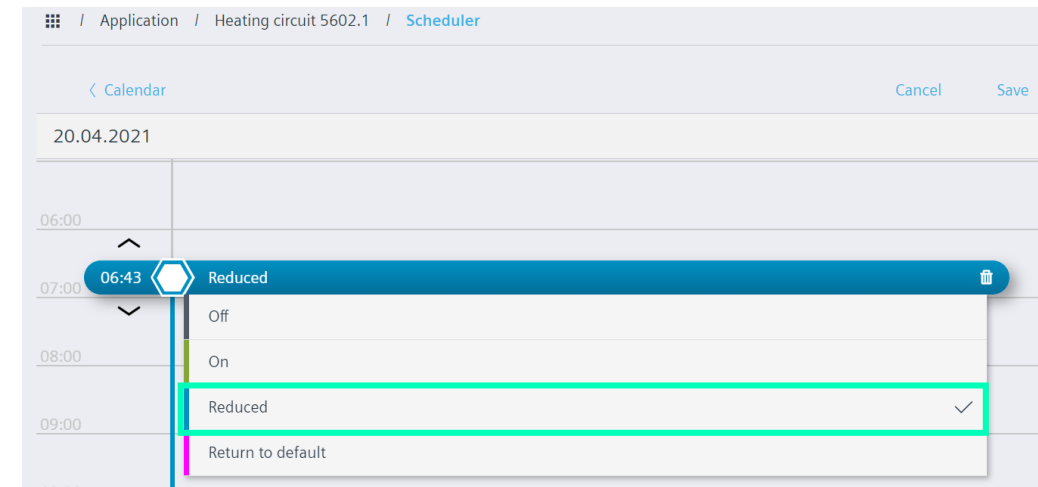
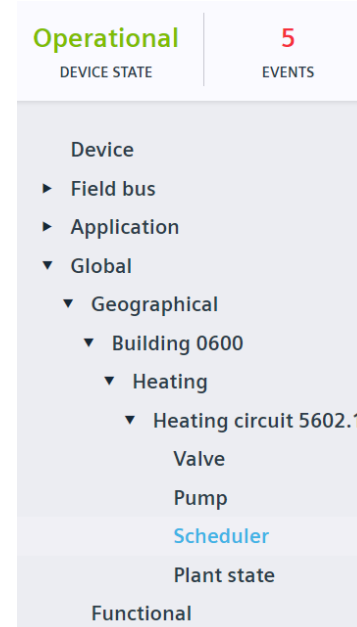
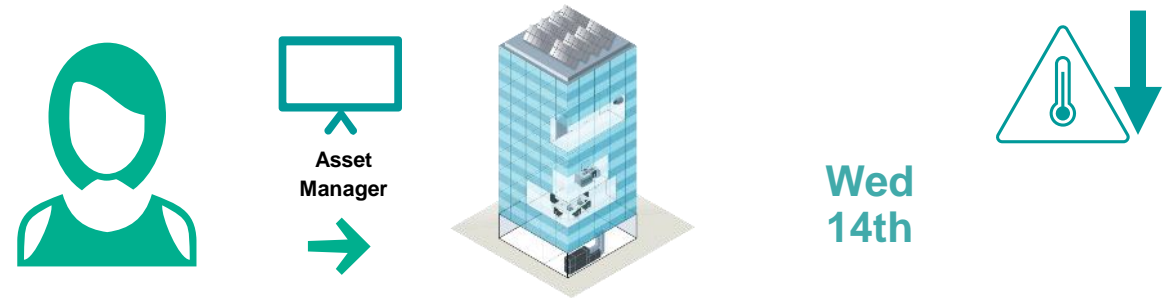
Does she need to travel?



## Solution 5

### Remote operations for scheduling

- Access remotely to customer site via asset manager
- Initiate connection via Web Interface
- Schedule an exceptional reduction of site heating on the selected date

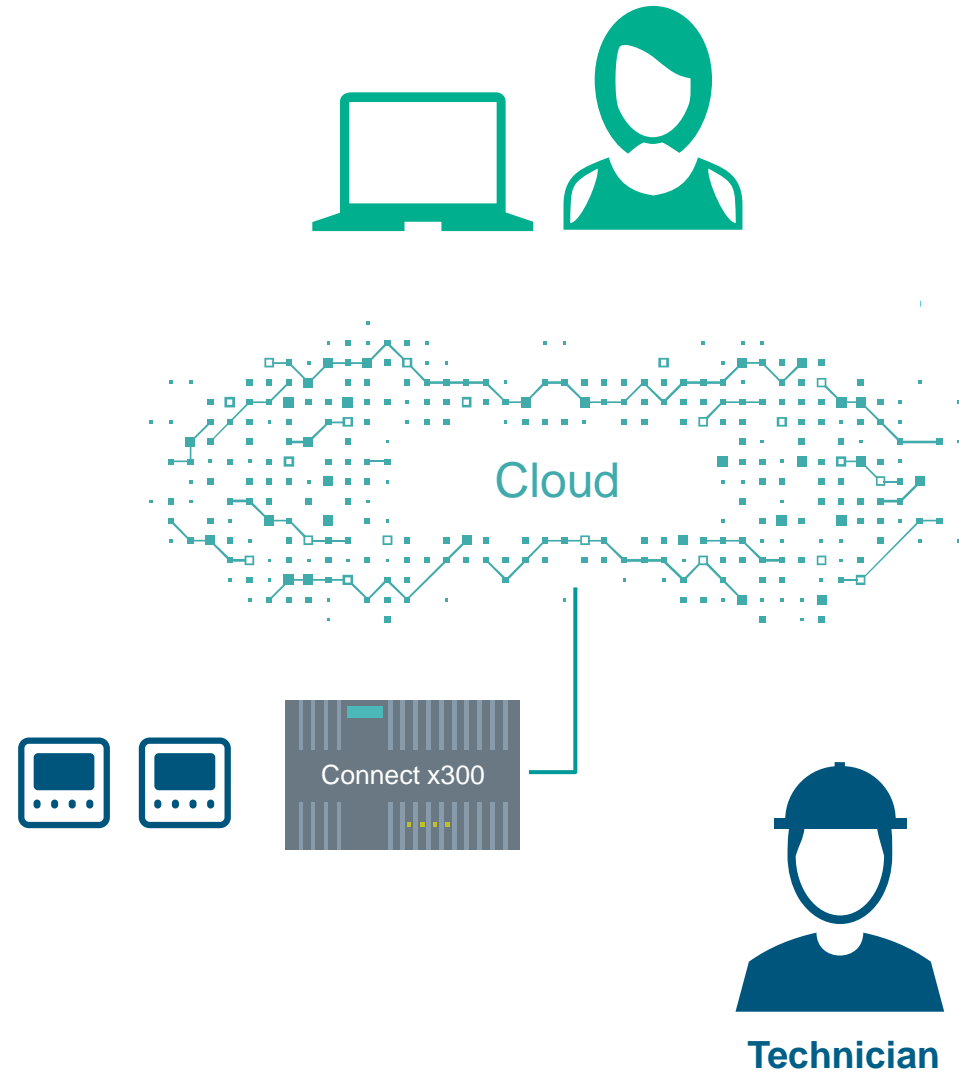


## Use case 6

### Remote engineering for Gateway configuration

A customer would like to add data points to its Connect x300 gateway.

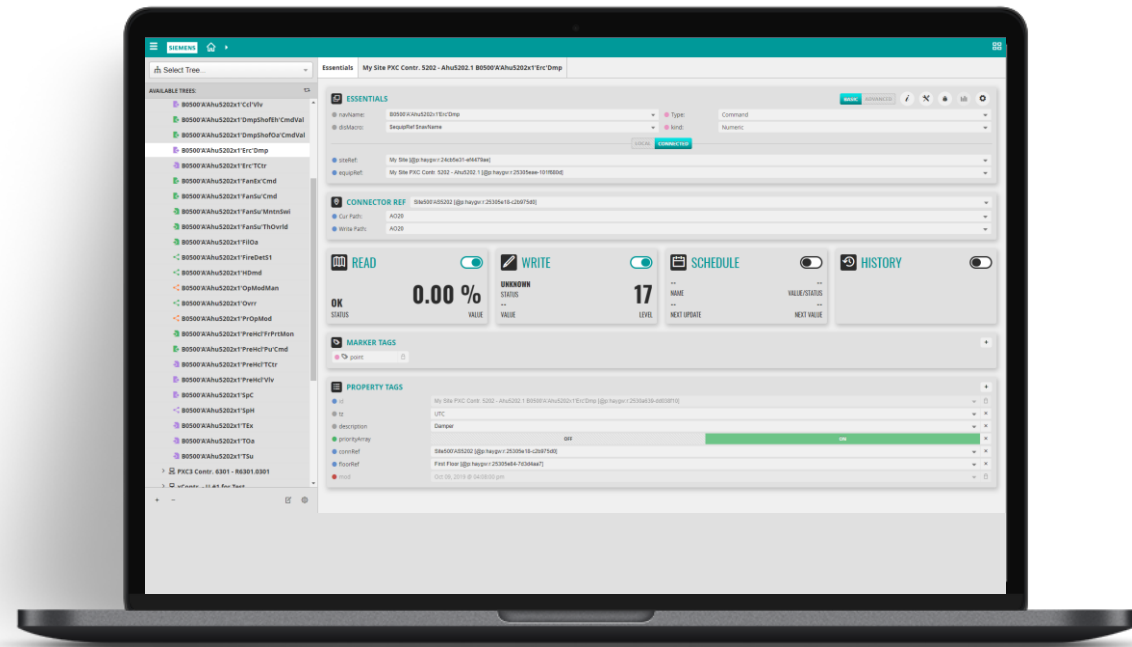
The technician has already installed the gateway and asks Rita to engineer and commission it from remote.



## Solution 6

# Remote engineering for Gateway configuration

- Access remotely to customer site via Building Operator Discovery
- Open the haystack gateway project
- Add data points to the Connect x300 gateway

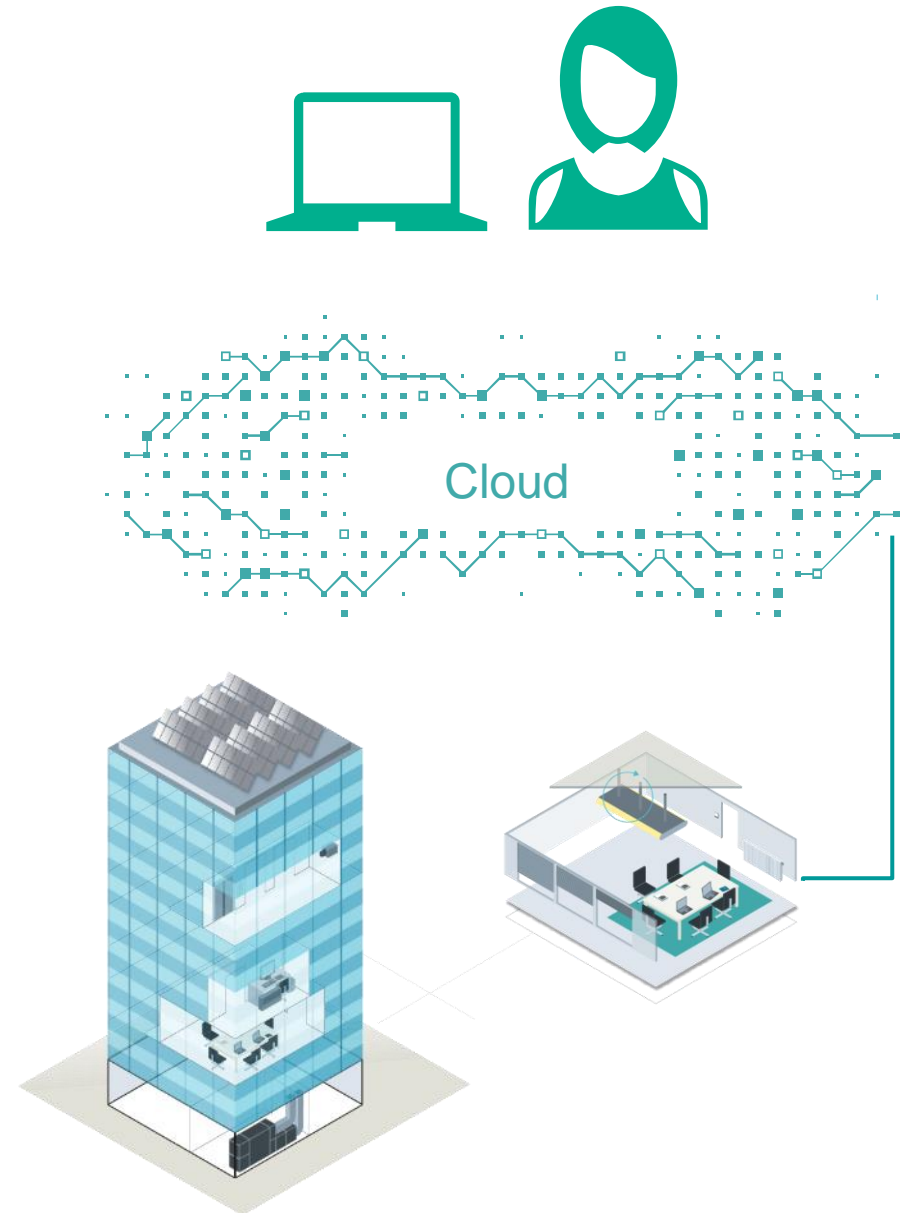


## Use case 7

### Remote room monitoring

A customer would like to see what are the current temperature and ventilation values in a specific room of the building site.

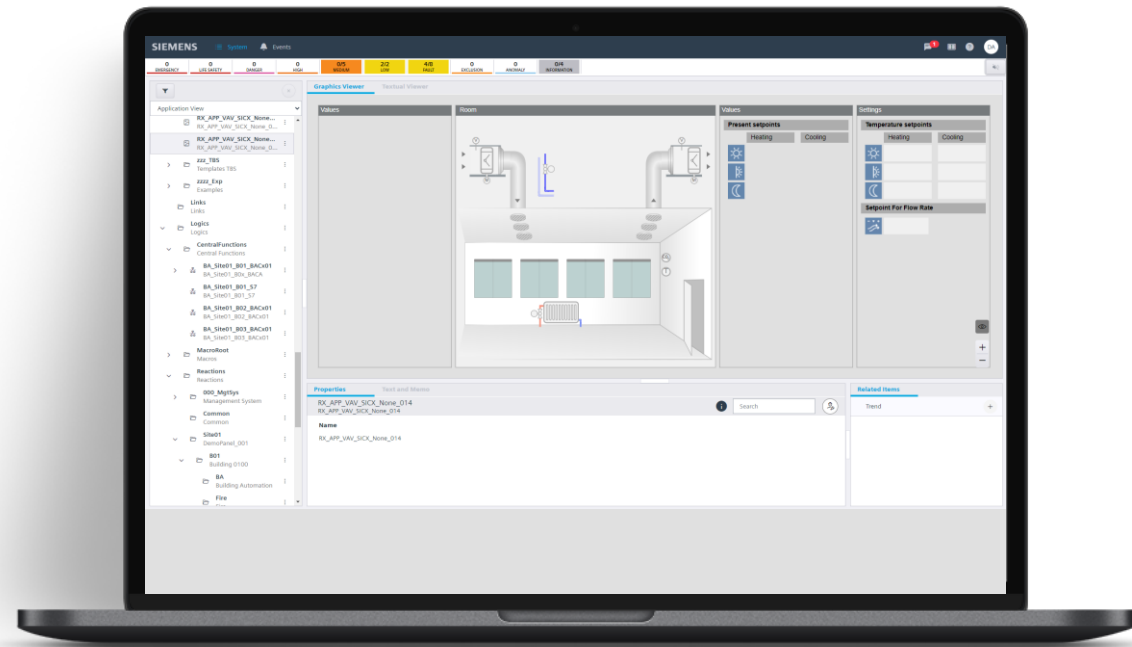
How can Rita rapidly show to the customer the current room situation?



## Solution 7

# Remote room monitoring

- Access remotely to customer site via Designo CC Flex Client
- Select the specific room
- See the full functionalities of the room and their location with 3D graphic viewer





# Highlights of Desigo Remote Access



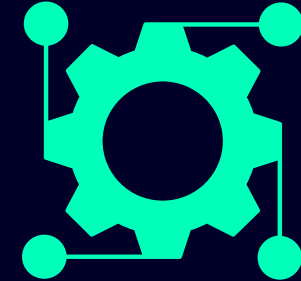
## Easy and Secure Access

- Remote connection via cloud without intrusive IT infrastructure changes
- Built in features to enable security



## Saving Travel cost and Time

- Perform your basic operation and monitoring tasks from anywhere
- Engineer and Commission PXC4/5 devices anytime



## Intuitive Engineering

- Get things done better, faster, easier and more reliably
- Better collaboration of the experts and on-site technicians and increased customer satisfaction
- Remote engineering allows resource allocation in the company more efficient way

# | BACK-UP

# Desigo Remote Access

**Target Customer:** Solution partners experts & Systems integrators technicians

**Persona:** Field Service Technician & Commissioning engineer

**JTBD:**

- Respond to technical issues and unplanned maintenance
- Engineer and configure the devices from remote

**Features:**

- ABT Site remote engineering
- Firmware updates of PXC4 and PXC5
- Remote web access to PXC4 and PXC5
- Self administration
- Real-time visibility
- Command data points via web interface or ABT Site
- Collect and download data of Intelligent Valve

**Limitations:**

- Only for PXC4 and PXC5
- View live and historical values at data point level

**Further information:**

- [Intranet Page PXC4 & 5](#)
- [Cloud Terms Page](#)

## Subscription model

### Standard\*

Base subscription for 1 year (paid upfront)

- 1 site
- 10 connected devices

**Order number: P55811-Y110-A100**

### Free trial\*

Free of charge; trial up to 6 months

- 1 site
- 10 connected devices

**Order number: P55811-Y111-A100**

\* hardware sold separately

