

A modern outdoor dining area on a wooden deck. A white pergola structure is installed over the deck, with two long, rectangular HEATSTRIP heating strips mounted on the underside. The deck is made of dark wood planks. In the foreground, there is a white wooden dining table and four matching chairs. Two chairs have blue and white striped cushions, and one has a solid blue cushion. The table is set with a white pitcher, glasses of orange juice, and some food. A large potted plant with green leaves is placed behind the table. The background shows a wooden wall and a view of a residential neighborhood with red roofs and trees.

# HEATSTRIP<sup>®</sup>

Outdoor heating never looked so good





## HEATSTRIP AUSTRALIA WORLD CLASS PRODUCTS & QUALITY

Heatstrip (Thermofilm Australia Pty Ltd) has been manufacturing innovative, stylish and energy efficient products for more than 30 years. The full range of Heatstrip products is currently supplied to residential and commercial markets, both in Australia and around the world.

Heatstrip provides Award-winning outdoor heating solutions for some of Australia's best-known venues and residential homes across the country.

In 2014 Thermofilm was inducted into the Victorian Manufacturing Hall of Fame.

In 2017 HEATSTRIP Portable LPG heater TGH34PL won a Good Design Award in Consumer Products.

In 2018 CROSSRAY BBQ was also recognised with a Good Design Award in Australia.



2018 CROSSRAY BBQ



2017 HEATSTRIP LPG



2013 HEATSTRIP CLASSIC



2014 VICTORIAN  
MANUFACTURING  
HALL OF FAME

Thermofilm Australia Pty Ltd

# PRODUCT SELECTOR

## CLASSIC - PAGE 2

### Application

- Pergola / Protected alfresco
- Difficult to heat indoor areas
- Cafe, garage/shed

**Ideal Mounting Height** 2.1-2.3m  
**Max Mounting Height** 2.5m



## MAX DC WITH REMOTE - PAGE 8

### Application

- High ceilings
- Exposed alfresco
- Balconies

**Ideal Mounting Height** 2.2-2.8m  
**Max Mounting Height** 3m



## CLASSIC WITH REMOTE - PAGE 3

### Application

- Pergola / protected alfresco
- Difficult to heat indoor areas
- Cafe, garage, shed

**Ideal Mounting Height** 2.1-2.5m  
**Max Mounting Height** 2.7m



## MAX - PAGE 9

### Application

- High ceilings
- Exposed alfresco
- Balconies

**Ideal Mounting Height** 2.2-2.8m  
**Max Mounting Height** 3m



## ELEGANCE - PAGE 4

### Application

- Protected alfresco
- Difficult to heat indoor areas

**Ideal Mounting Height** 2.1-2.5m  
**Max Mounting Height** 2.7m



## INTENSE PORTABLE - PAGE 10

### Application

- Portable spot heating
- Dining / entertaining / work stations
- Suitable for indoor and outdoor area

**Indoor Heating Area** 14m<sup>2</sup>  
**Outdoor Heating Area** 5-9m<sup>2</sup>



## ELEGANCE WITH REMOTE - PAGE 4

### Application

- Protected alfresco
- Difficult to heat indoor areas

**Ideal Mounting Height** 2.1-2.5m  
**Max Mounting Height** 2.7m



## INTENSE NANO - PAGE 11

### Application

- Portable spot heating
- Dining / entertaining / work stations
- Suitable for indoor and outdoor area

**Indoor Heating Area** 14m<sup>2</sup>  
**Outdoor Heating Area** 5-9m<sup>2</sup>



## ELEGANCE WITH REMOTE & APP - PAGE 5

### Application

- Protected alfresco
- Difficult to heat indoor areas

**Ideal Mounting Height** 2.1-2.5m  
**Max Mounting Height** 2.7m



## PORTABLE LPG - PAGE 12

### Application

- Portable spot heating
- Outdoor dining / kitchen
- Hospitality
- Patios / courtyards / balconies

**Heating Area** 16m<sup>2</sup>



## INTENSE (ALL BLACK) - PAGE 6

### Application

- Under cover protected areas
- Semi-exposed outdoor locations

**Ideal Mounting Height** 2.1-2.5m  
**Max Mounting Height** 2.8m



## WALL MOUNTED LPG - PAGE 13

### Application

- Alfresco areas / Hospitality / Outdoor dining / kitchen / Patios / balconies

**Ideal Mounting Height** 2-2.7m  
**Max Mounting Height** 3.5m  
**Heating Area** 16m<sup>2</sup>



## INTENSE OFF-WHITE - PAGE 7

### Application

- Under cover protected areas
- Semi-exposed outdoor locations

**Ideal Mounting Height** 2.1-2.5m  
**Max Mounting Height** 2.8m



## WALL MOUNTED NATURAL GAS - PAGE 13

### Application

- Alfresco areas / Hospitality / Outdoor dining / kitchen / Patios / balconies

**Ideal Mounting Height** 2-2.7m  
**Max Mounting Height** 3.5m  
**Heating Area** 16m<sup>2</sup>





# HEATSTRIP<sup>®</sup> CLASSIC

SLIMLINE ELECTRIC



**Classic slimline electric, heating solution for your balcony, patio, undercover, protected alfresco area, or verandah. Also suitable for indoor use.**

- Indoor/outdoor electric radiant heater
- 3 Models available THH1800A (1800W), THH2400A (2400W) & THH3200A (3200W).
- Convenient DIY installation for the 1800W and 2400W models. 3200W model must be hard-wired.
- Standard mounting bracket included can be used for wall or ceiling mounting. Bracket can also be used to suspend the heater using chains or wires.
- Ideal mounting height 2.1-2.3m. Max mounting height 2.5m



Corrosion protected for even the toughest environments.



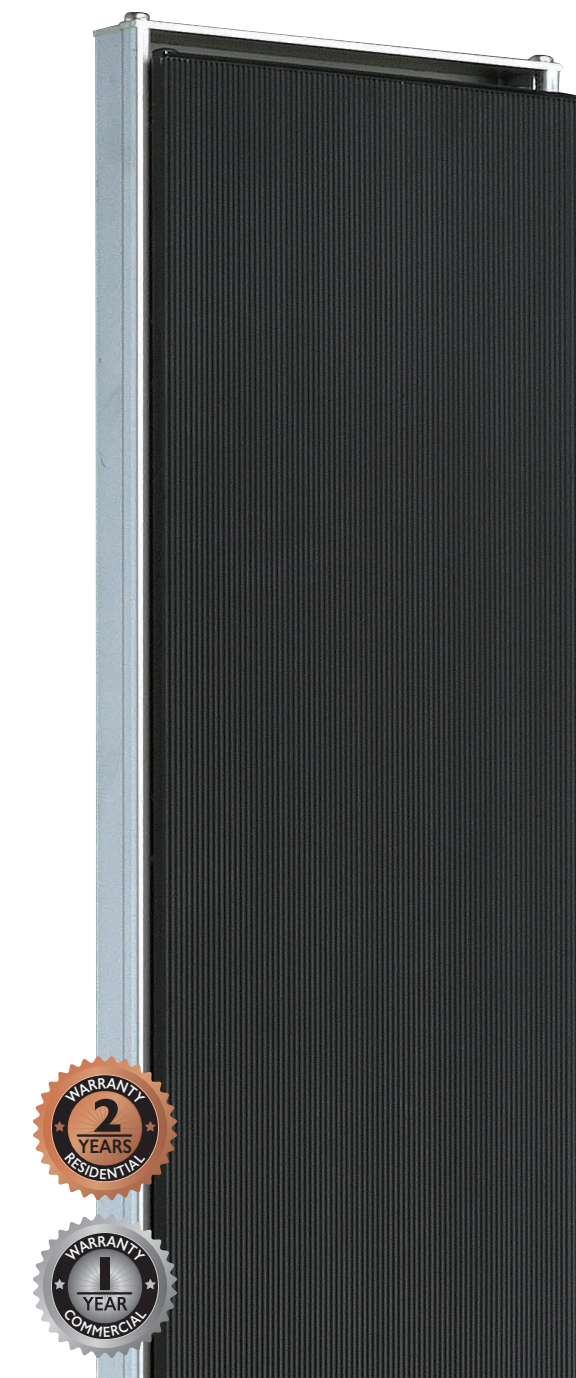
Stylish, sleek, unobtrusive design with unique HEATSTRIP front profile and coating technology.

## Optional Controllers

**HARDWIRED (TT-MTM)**  
Wall mounted controller & remote control.



**DIY (TT-MTR-PLUG)**  
Timer switch remote control of plug-in heaters. Max 10amps.



Model	Running Costs	Power	Current	Dimensions	Weight	Lead Length	Plug	Heating Area	Standard Bracket	Flush Mount Kit	Extension Poles
THH1800A	45c / hr	1800 Watts	7.5 amps	1104x165x48mm	6 kg	1000 mm	Yes	3-4 m <sup>2</sup>	ZBRAC-113S	THHAC-010	THHAC-005 (300mm)
THH2400A	60c / hr	2400 Watts	10 amps	1364x165x48mm	7 kg	1000 mm	Yes	4-5 m <sup>2</sup>	ZBRAC-113S	THHAC-011	THHAC-006 (600mm) THHAC-007 (900mm)
THH3200A*	80c / hr	3200 Watts	13.3 amps	1774x165x48mm	9 kg	1000 mm	No	5-6 m <sup>2</sup>	ZBRAC-113S	THHAC-012	THHAC-008 (1200mm)

**Materials of construction:** High temperature ceramic coated extruded alloy. IP55 Rated.

**\*This unit must be installed by a licensed electrician.**

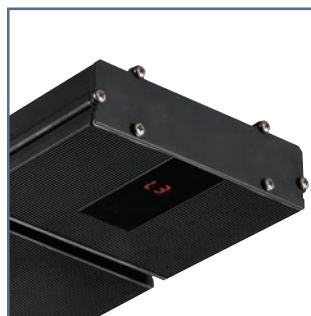


**Remote controlled Classic slimline electric, all-black heating solution for your undercover, protected alfresco area, balcony, patio or verandah. Also suitable for indoor use.**

- Indoor/outdoor electric radiant heater
- 2 Models available THH2400AR (2400W) & THH3200AR (3200W)
- New LED control panel and remote control with easy on/off functionality, 3 heat levels and adjustable 0-24 hour timer
- Convenient DIY installation for the 2400W model. 3200W model must be hard-wired.
- Corrosion-resistant for most environments
- Standard mounting bracket included can be used for wall or ceiling mounting. Bracket can also be used to suspend the heater using chains or wires.
- Ideal mounting height 2.1-2.3m. Max mounting height 2.7m



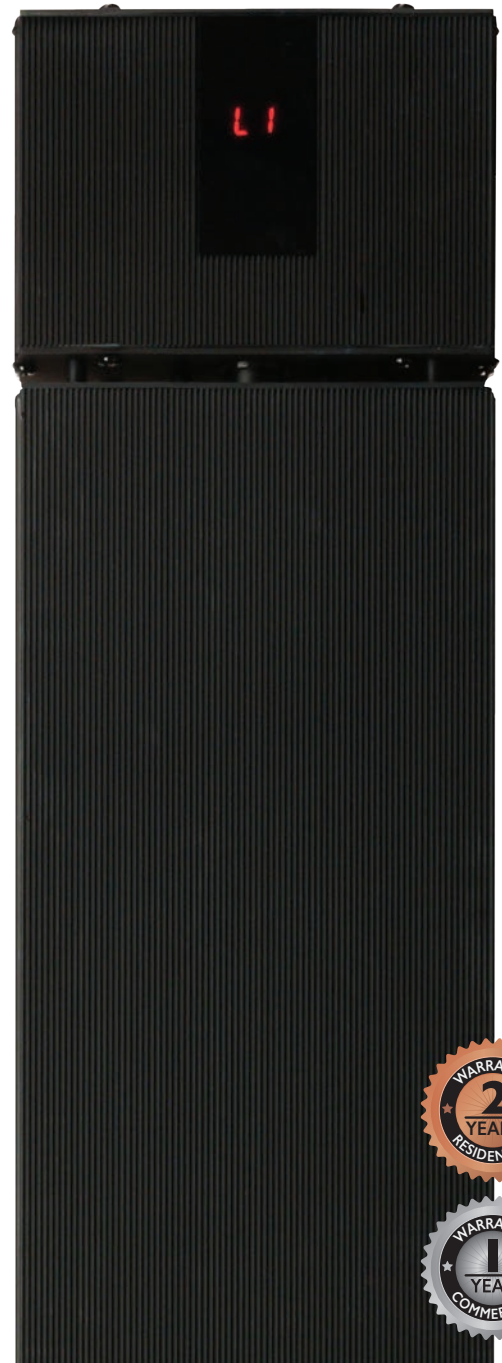
Remote for easy power on/off & heat control.



Optional mounting accessories available, including flush mount kits and extension poles.

## HEATSTRIP<sup>®</sup> CLASSIC

WITH REMOTE



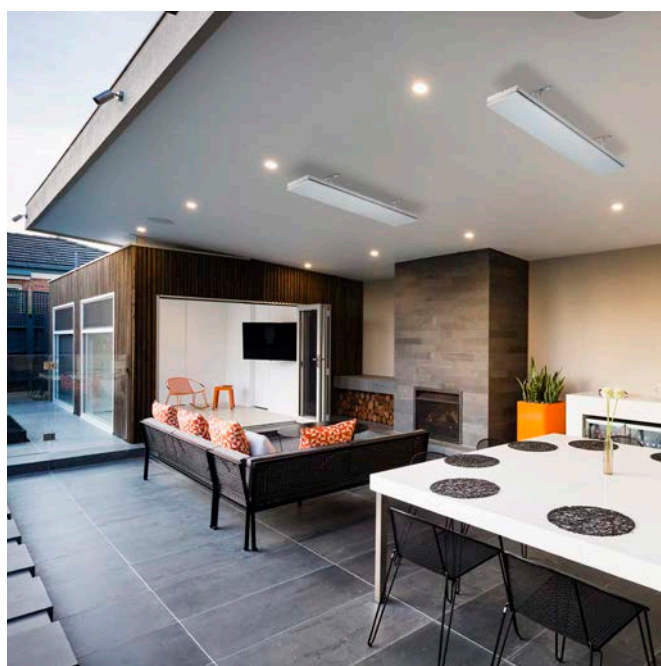
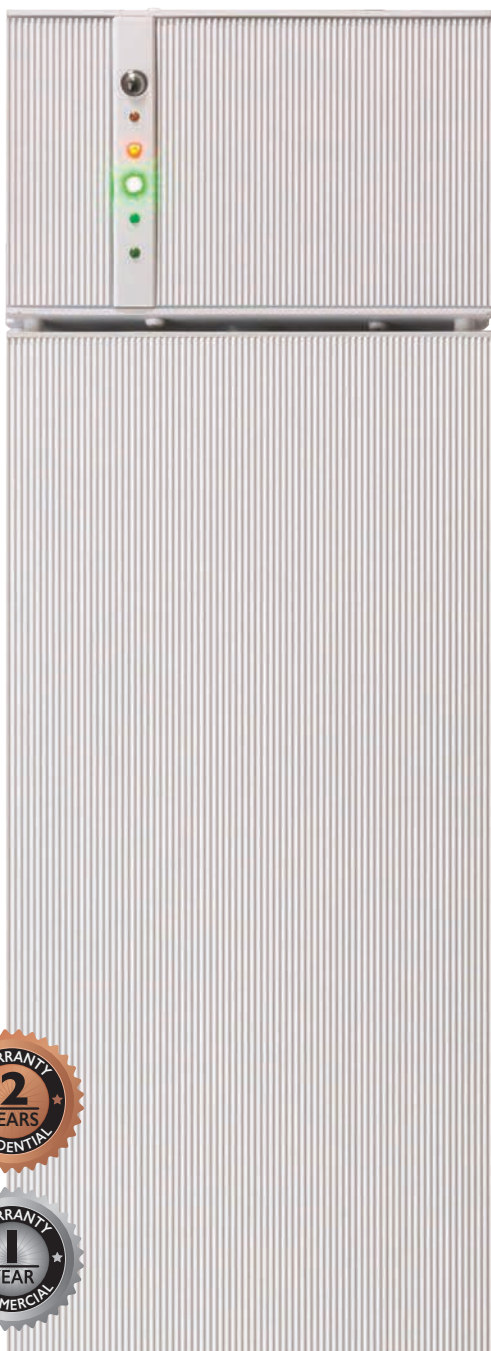
Model	Running Costs	Power	Current	Dimensions	Weight	Lead Length	Plug	Heating Area	Standard Bracket	Flush Mount Kit	Extension Poles
THH2400AR	60c / hr	2400 Watts	10 amps	1371x165x48mm	7 kg	1000 mm	Yes	4-5 m <sup>2</sup>	ZBRAK-113B	THHAC-013	THYAC-047 (300mm) THYAC-048 (600mm)
THH3200AR*	80c / hr	3200 Watts	13.3 amps	1780x165x48mm	9 kg	1000 mm	No	5-6 m <sup>2</sup>	ZBRAK-113B	THHAC-014	THYAC-049 (900mm) THYAC-050 (1200mm)

**Materials of construction:** High temperature all-black ceramic coated extruded alloy. IP55 rated.

**\*This unit must be installed by a licensed electrician..**



# HEATSTRIP® ELEGANCE WITH REMOTE



**Slimline, off-white electric radiant heater for your balcony, patio, undercover, protected alfresco area, or verandah. Also suitable for indoor uses.**

- Indoor/outdoor electric radiant heater
- 2 Models available, THE2400R (2400W) Plug-in DIY & THE3200R (3200W) must be hardwired.
- LED control panel and remote included with easy On/Off functionality, Low/High temperature settings and adjustable 0-24 hour timer.

## HEATSTRIP® ELEGANCE



- Electric Radiant Heater
- 3 Models available
- Suitable for protected outdoor or indoor areas
- Plug-in DIY (1800 or 2400W) or hardwired (3600W) No remote control included

Model	Running Costs	Power	Current	Dimensions (mm)	Weight kg	Lead Length	Plug	Heating Area
THE1800	45c / hr	1800 Watts	7.5 amps	974x170x48.5	4 kg	1000 mm	Yes	3-4 m²
THE2400	60c / hr	2400 Watts	10 amps	1204x170x48.5	7 kg	1000 mm	Yes	4-5 m²
THE3600*	90c / hr	3600 Watts	15 amps	1804x170x48.5	9 kg	1000 mm	No	5-6 m²

Controllers			Accessories		
Model	Hardwired	DIY Plug In	Std. Bracket	Flush Kit	Extension Poles
THE1800	TT-MTM	TT-MTR-PLUG	ZBRAC-113W	THEAC-040	THEAC-043 (300mm)
THE2400	(Hardwired controller)	(Plug in controller)		THEAC-041	THEAC-044 (600mm)
THE3600*				THEAC-042	THEAC-045 (900mm) THEAC-046 (1200mm)

Model Elegance w. remote	Running Costs	Power	Current	Dimensions	Weight kg	Lead Length	Plug	Heating Area	Standard Bracket	Flush Mount Kit	Extension Poles
THE2400R	60c / hr	2400 Watts	10 amps	1306x170x42.7mm	76kg	1000 mm	Yes	4-5 m²	ZBRAC-113W	THERAC-056	THEAC-043 (300mm) THEAC-044 (600mm)
THE3200R*	80c / hr	3200 Watts	13.3 amps	1710x170x42.7mm	9 kg	1000 mm	No	5-6 m²	ZBRAC-113W	THERAC-057	THEAC-045 (900mm) THEAC-046 (1200mm)

**Materials of construction:** High temperature ceramic coated extruded alloy. IP55 rated.

**\*This unit must be installed by a licensed electrician.**

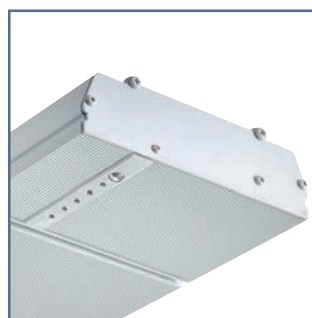


**App and remote controlled sleek, off-white electric heating solution for your undercover, protected alfresco area, balcony, patio or verandah. Also suitable for indoor uses.**

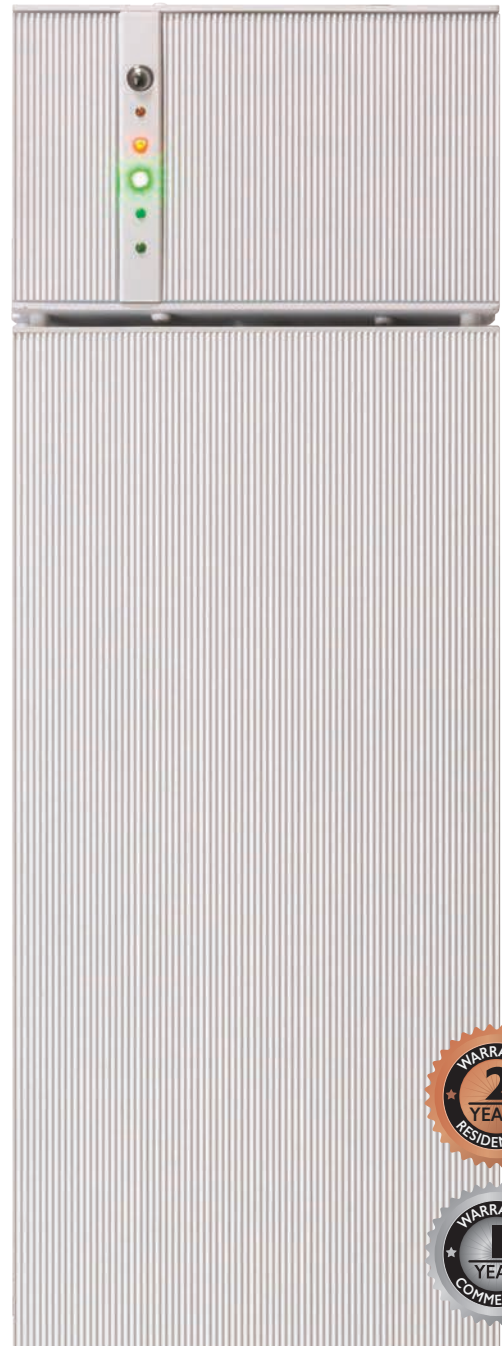
- Indoor/outdoor electric radiant heater
- 2 Models available: THE2400RA (2400W) & THE3200RA (3200W)
- Remote, app plus smart home connectivity. Compatible with Google and Amazon smart home platforms. Bluetooth & WIFI
- Convenient DIY installation for the 2400W model. 3200W model must be hard-wired
- Standard mounting bracket included can be used for wall or ceiling mounted. Bracket can also be used to suspend the heater using chains or wires
- Ideal mounting height 2.1-2.5m. Max mounting height 2.7m



Remote or app for convenient control.



Control Panel with On/Off functionality, High/Low temperature settings, 1/2/4 hour timer.



Model	Running Costs	Power	Current	Dimensions	Weight kg	Lead Length	Plug	Heating Area	Standard Bracket	Flush Mount Kit	Extension Poles
THE2400RA	60c / hr	2400 Watts	10 amps	1306x170x42.7mm	7 kg	1000 mm	Yes	4-5 m <sup>2</sup>	ZBRAK-113W	THERAC-056	THEAC-043 (300mm) THEAC-044 (600mm)
THE3200RA*	80c / hr	3200 Watts	13.3 amps	1710x170x42.7mm	9 kg	1000 mm	No	5-6 m <sup>2</sup>	ZBRAK-113W	THERAC-057	THEAC-045 (900mm) THEAC-046 (1200mm)

**Materials of construction:** High temperature off-white ceramic coated extruded alloy. IP55 rated.

**\*This unit must be installed by a licensed electrician.**



# HEATSTRIP® INTENSE

INFRARED HEAT



**High output, instant heat. Ideal for undercover and semi exposed outdoor areas or indoor use.**

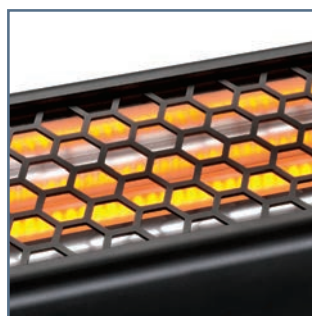
- Electric infrared instant high temperature heater
- 2 Models available: THY2200 (2200W) and THY3200 (3200W)
- Convenient DIY installation for the 2200W model. 3200W model must be hard-wired
- All black construction, corrosion protection for most environments
- Standard mounting bracket included can be used for Wall or ceiling mounted. Bracket can also be used to suspend the heater using chains or wires
- Ideal mounting height 2.1-2.5m. Max mounting height 2.8m

## Optional Controllers

**HARDWIRED (TT-MTM)**  
Wall mounted controller & remote control.



**DIY (TT-MTR-PLUG)**  
Timer switch remote control of plug-in heaters. Max 10amps.



High performance infra-red electric heater. That provides instantaneous heat.



Optional accessories available (see below for part number)



Model	Running Costs	Power	Current	Dimensions	Weight kg	Lead Length	Plug	Heating Area	Standard Bracket	Flush Mount Kit	Extension Poles
THY2200	55c / hr	2200 Watts	9.2 amps	1068x120x90mm	6 kg	1000 mm	Yes	5-9 m <sup>2</sup>	ZBRAK-132B	THYAC-051	THYAC-047 (300mm) THYAC-048 (600mm) THYAC-049 (900mm) THYAC-050 (1200mm)
THY3200*	80c / hr	3200 Watts	13.3 amps	1270x120x90mm	7 kg	1000 mm	No	8-13 m <sup>2</sup>	ZBRAK-132B	THYAC-052	

**Materials of construction:** High temperature Black ceramic coated extruded alloy. IPX5 rated.

**\*This unit must be installed by a licensed electrician.**





# HEATSTRIP<sup>®</sup> INTENSE

OFF WHITE

**High output, instant heat. Ideal for undercover and semi exposed outdoor areas or indoor use.**

- Electric infrared instant high temperature heater
- 2 Models available: THY2200W (2200W) and THY3200W (3200W)
- Convenient DIY installation for the 2200W model. 3200W model must be hard-wired
- All off-white construction with hexagonal grill is corrosion protected for most environments
- Standard mounting bracket included for wall or ceiling mounting. Bracket can be used to suspend the heater using chains or wires
- Ideal mounting height 2.1-2.5m. Max mounting height 2.8m

## Optional Controllers

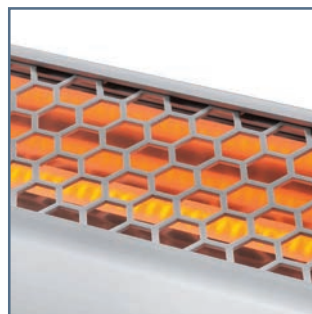
**HARDWIRED (TT-MTM)**  
Wall mounted controller & remote control.



**DIY (TT-MTR-PLUG)**  
Timer switch remote control of plug-in heaters. Max 10amps.



Corrosion resistant "off-white" slimline heater.



Carbon filament electric infra-red element, providing instant heat.



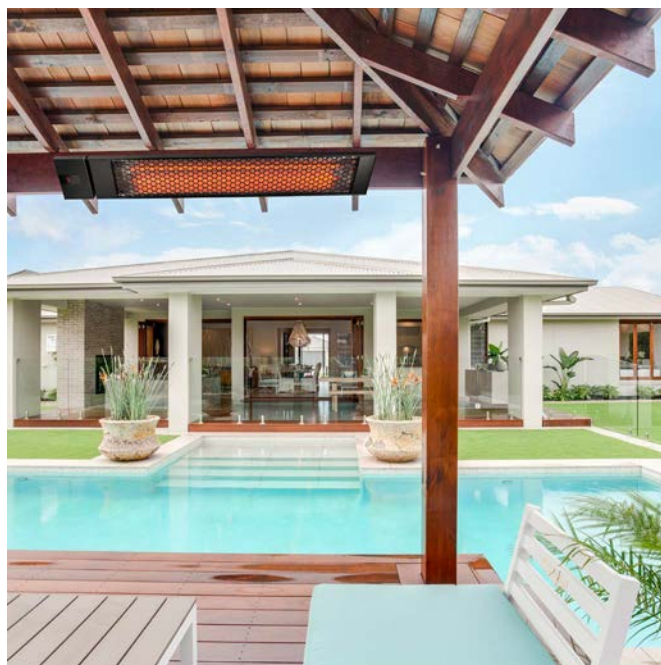
Model	Running Costs	Power	Current	Dimensions	Weight kg	Lead Length	Plug	Heating Area	Standard Bracket	Flush Mount Kit	Extension Poles
THY2200W	55c / hr	2200 Watts	9.2 amps	1068x120x90mm	6 kg	1000 mm	Yes	5-9 m <sup>2</sup>	ZBRAK-132W	THYAC-053	THEAC-043 (300mm) THEAC-044 (600mm)
THY3200W*	80c / hr	3200 Watts	13.3 amps	1270x120x90mm	7 kg	1000 mm	No	8-13 m <sup>2</sup>	ZBRAK-132W	THYAC-054	THEAC-045 (900mm) THEAC-046 (1200mm)

**Materials of construction:** High temperature off-white ceramic coated extruded alloy. IPX5 rated.

**\*This unit must be installed by a licensed electrician.**

# HEATSTRIP<sup>®</sup> MAX DC

WITH REMOTE

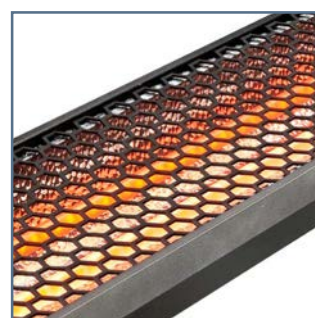


**Max heat, max style with this heating solution for exposed and hard to heat areas such as balconies, pergolas, warehouses and restaurants.**

- Electric infrared heater
- 2 models available. THX2400DCR (2400W) & THX3600DCR (3600W)
- Dual heat infrared carbon element technology and upgraded heat reflector design that delivers world class performance
- The remote and control panel provides 3 heat levels with adjustable timer options from 0-24 hours with the touch of a button
- Convenient DIY installation for the 2200W model. 3600W model must be hard-wired
- Ideal mounting height 2.2-2.8m. Max mounting height 3m



Anodised alloy components provide corrosion protection, also suitable for coastal locations.



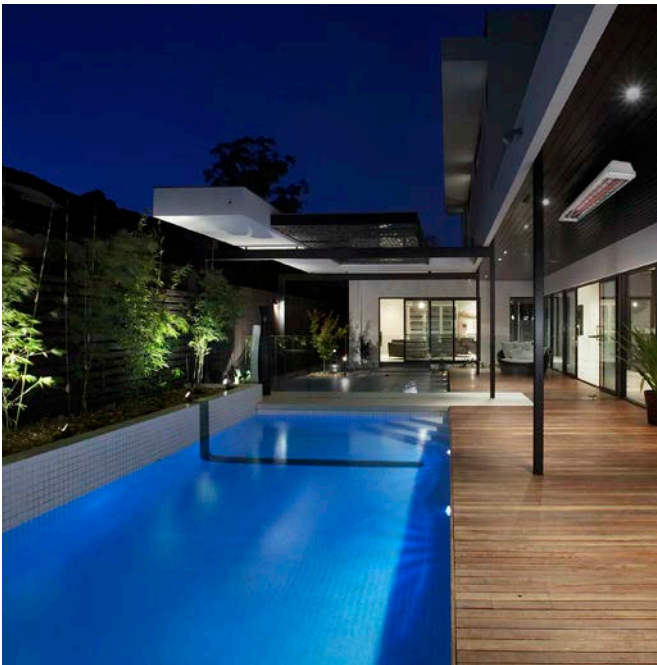
Commercial quality and construction. With a stylish hexagonal grille and black finish.

Model	Running Costs	Power	Current	Dimensions	Weight kg	Lead Length	Plug	Heating Area	Mounting Bracket	Flush Mount Kit	Extension Poles
THX2400DCR	60c / hr	2400 Watts	10 amps	979x170x80mm	6 kg	1000 mm	Yes	7-12 m <sup>2</sup>	ZBRAK-132B	THXAC-034	THYAC-047 (300mm) THYAC-048 (600mm)
THX3600DCR*	90c / hr	3600 Watts	15 amps	1180x170x80mm	8 kg	1000 mm	No*	11-18 m <sup>2</sup>	ZBRAK-132B	THXAC-035	THYAC-049 (900mm) THYAC-050 (1200mm)

**Materials of construction:** Anodised alloy casing and end caps, with a black powder coated grille. IPX5 rated.

**\*This unit must be installed by a licensed electrician.**





**Commercial grade heating solution for tough outdoor and indoor heating applications. Perfect for outdoor alfresco areas, balconies, courtyards, hospitality, and warehouses.**

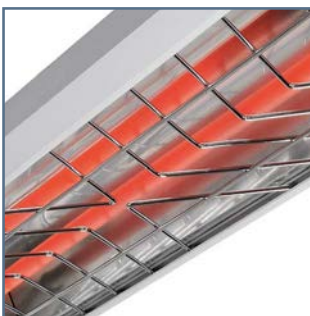
- Electric infrared heater
- 2 models available THX2400 (2400W) & THX3600 (3600W)
- The Max heater is a high-temperature radiant heater with a shatterproof heating element
- Convenient DIY installation for the 2400W model. 3600W model must be hard-wired
- Commercial grade quality and construction
- Ideal mounting height 2.2-2.8m. Max mounting height 3m

### Optional Controllers

**HARDWIRED (TT-MTM)**  
Wall mounted controller & remote control.



**DIY (TT-MTR-PLUG)**  
Timer switch remote control of plug-in heaters. Max 10amps.



Unique "low glow" incoloy element - no more blinding light.



Optional accessories available to purchase such as extension poles and flush mount enclosures.

# HEATSTRIP<sup>®</sup> MAX



Model	Running Costs	Power	Current	Dimensions	Weight kg	Lead Length	Plug	Heating Area	Mounting Bracket	Flush Mount Kit	Extension Poles
THX2400	60c / hr	2400 Watts	10 amps	854x170x80mm	6 kg	1000 mm	Yes	10 m <sup>2</sup>	ZBRAK-132S	THXAC-030	THHAC-005 (300mm) THHAC-006 (600mm)
THX3600*	90c / hr	3600 Watts	15 amps	1184x170x80mm	8 kg	1000 mm	No*	15 m <sup>2</sup>	ZBRAK-132S	THXAC-031	THHAC-007 (900mm) THHAC-008 (1200mm)

**Materials of construction:** Anodised alloy casing and end caps, with a stainless steel grille. IPX5 rated.

**\*This unit must be installed by a licensed electrician.**

# HEATSTRIP<sup>®</sup> INTENSE

ELECTRIC PORTABLE



An attractive portable outdoor heating solution, providing high output, instant heat. Suitable for spot heating tables, lounges, entertaining areas and work stations.

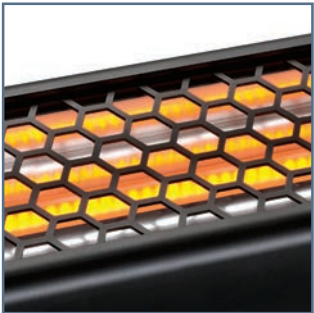
- Electric Infrared Portable Heater
- THY2200P (2200W)
- With high quality, robust, all black construction, components are sub-assembled for easy final DIY installation
- In-built wheels for easy portability and storage
- 2-year residential and 1-year commercial warranty

### Optional Controller

DIY (TT-MTR-PLUG)  
An optional controller is available for easy DIY functions with LED indicators, 1/2/4 hour timer and remote control On/Off.



Ideal for indoor and outdoor use. In-built wheels for easy portability and storage.



Includes a high-performance carbon filament electric infra-red element, providing instant heat.

Model	Running Costs	Power	Current	Dimensions	Weight kg	Lead Length	Plug	Heating Area	Optional Controller
THY2200P	55c / hr	2200 Watts	9.2 amps	1068x2050x500mm	20 kg	3000 mm	Yes	5-9 m <sup>2</sup>	TT-MTR-PLUG

Materials of construction: Black anodized alloy casing and end caps. Powder coated grille. IPX5 rated.





# HEATSTRIP<sup>®</sup> INTENSE

NANO / PORTABLE

**Mounted or portable spot heating, suitable for Protected undercover alfresco areas, bathrooms or offices. Suitable for Indoor & Outdoor areas.**

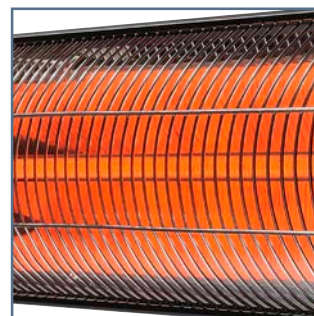
- Infrared Electric Heater
- THN2000 (2000W)
- High instant heat output
- Spot heating
- Heat & timer control
- Great for bathrooms, garages, sheds, enclosed alfresco areas
- Easy DIY installation with wall/ceiling mount brackets included



Stainless steel portable stand suitable for easy installation. Purchased separately. 450 x 2050mm.



Remote provides heat output (1-4) & timer (0-24 hour) control.



High-performance carbon filament electric infra-red element, providing instant heat.



Entry-level heater. Quality, robust construction. Easy DIY installation with wall/ceiling mount brackets included.

Model	Running Costs	Power	Current	Dimensions	Weight kg	Lead Length	Plug	Heating Area	Optional Portable Stand
THN2000	50c / hr	2000 Watts	8.3 amps	900x130x89.5mm	3 kg	2000 mm	Yes	5-9 m <sup>2</sup>	THN-STAND

**Materials of construction:** Extruded alloy casing, 304 stainless steel grille and mounting brackets. IP55 protection rating.

HEATSTRIP®

PORTABLE LPG



Portable, high output, LPG gas heater. Ideal for undercover and semi exposed outdoor areas. Commercial grade construction and heat output.

- Portable LPG heater
- TGH34PL-2 (34MJ, 4 tile)
- Suitable for alfresco outdoor dining areas, patios, outdoor dining areas, patios, outdoor kitchens, courtyards, verandas and hospitality
- Fully concealed gas pipes and bottle. In-built wheels for easy portability and storage
- Optional heater cover also available for your heater



34MJ, 4 tile commercial grade ceramic burner; with market leading wind protection rating of 16km/hr.



Electronic, battery-operated finger pull on/off controls, makes operation so easy and effortless.

Model	Running Costs	Tiles	MJ	Dimensions	Weight kg	Ignition	Heating Area	Heat Shield	Cover	Gas Type
TGH34PL-2	\$2.00 / hr	4	34	650x670x2118mm	31.5 kg	Electronic finger pull	16 m²	TGHAC-003	TGHCOVER	LPG

Materials of construction: Head- stainless steel (430ss) with high temperature paint coating. Stand: E-coated mild steel with powder coated finish.





# HEATSTRIP®

## WALL MOUNTED

The new and upgraded HEATSTRIP® wall mounted gas heaters are a stylish addition to any outdoor area.

- Gas wall mounted heater
- TGH34WN-2 (Natural Gas model, 34MJ)
- TGH34WL-2 (LPG model, 34MJ)
- Suitable for alfresco outdoor dining areas, patios, courtyards and verandas
- World-class wind protection rating at 16 kilometres an hour
- Protective grille and reflector included as standard, to guarantee safe operation
- Wall mounting bracket allows for multiple mounting angles



Electronic, battery-operated finger pull on/off controls, makes operation so easy and effortless.



Heater built from stainless steel with high temperature paint coating.



The standard heat reflector ensures only 500mm overhead clearance is required. The optional HeatShield (TGHAC-003) reduces this to 300mm clearance.



34MJ, 4 tile commercial grade ceramic burner, with market leading wind protection rating of 16km/hr.

Model	Running Costs	Tiles	MJ	Dimensions	Weight kg	Ignition	Heating Area	Heat Shield	Extension Pole	Gas Type
TGH34WN-2	\$68c / hr	4	34	650x190x380mm	11.5 kg	Electronic finger pull	11.5 m <sup>2</sup>	TGHAC-003	TGHAC-004	Natural Gas
TGH34WL-2*	\$2.00 / hr	4	34	650x190x380mm	11.5 kg		11.5 m <sup>2</sup>	TGHAC-003	TGHAC-004	LPG

**Materials of construction:** Head- stainless steel (430ss) with high temperature paint coating.

\*For direct connection to an LPG bottle. For reticulated LPG connection, please contact Heatstrip.

