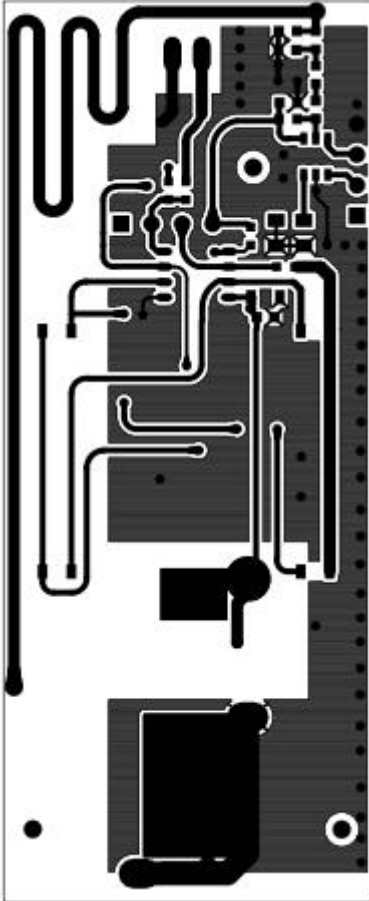


# Antenna specification

Manufacturer: SHENZHEN HEQI TECHNOLOGY CO., LTD

Model: Integral Antenna

Dimensions: 12cm ± 1



Maximum Gain : 0.15dBi

Frequency band: 300MHz~400MHz

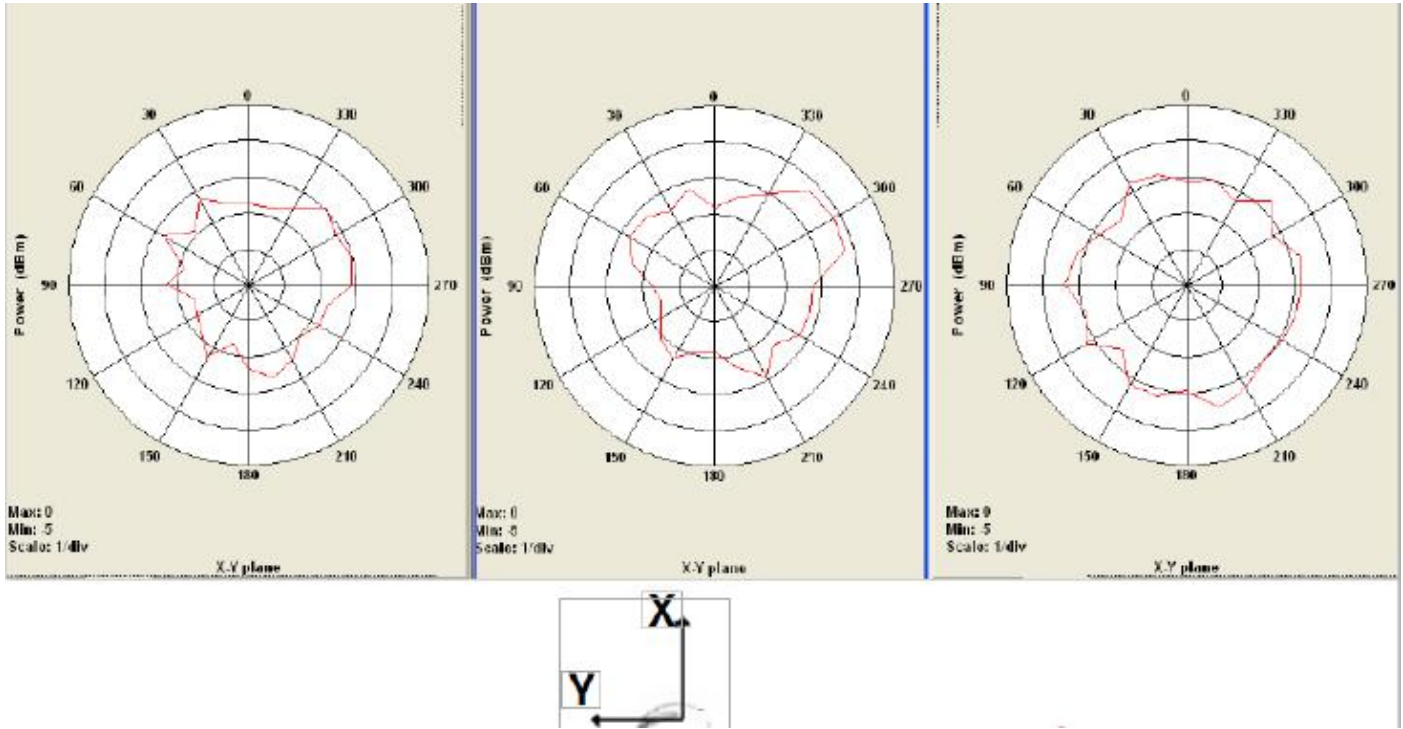
nominal impedance : 50Ω

Antenna Radiation efficiency and Gain

Freq (MHz)	Effi(%)	Effi(dB)	Gain(dBi)
300	51.32	-2.22	-0.02
310	55.31	-2.09	0.15
320	55.94	-1.9	-0.12
330	56.12	-2.02	-0.53
340	59.75	-1.97	-0.01
350	51.66	-2.12	-0.16
360	55.31	-1.82	-0.06
370	55.94	-1.93	-0.01
380	56.12	-2.07	-0.64
390	59.75	-2.05	-0.15

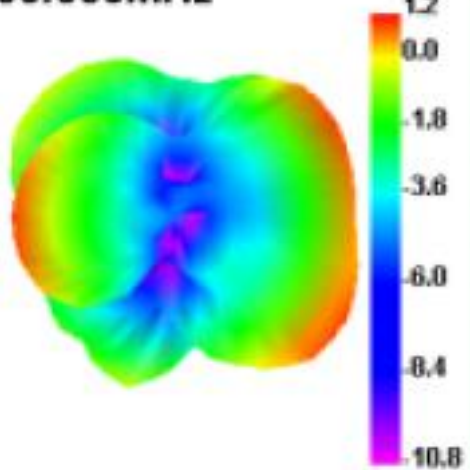
400	52.31	-2.09	-0.19
-----	-------	-------	-------

2D Radiation Pattern



3D Radiation Pattern

300.000MHz



400.000MHz

