

Illustrated Parts & Service Map

HP ProDesk 600 G1 - Small Form Factor



© 2013 Hewlett-Packard Development Company, L.P. The information contained herein is subject to change without notice. HP shall not be liable for technical or editorial errors or omissions contained herein.

Document Number 723285-001. 1st Edition July 2013.



Key Specifications

Processor Type	Intel® Core i7, i5
RAM Type	Non-ECC DDR3 PC3-12800 (1600 MHz)
Maximum RAM	32 GB
Expansion Slots	<ul style="list-style-type: none"> (1) PCIe-x16 (3) PCIe-x1
Chipset	Intel Q85
Graphics Adapter	Integrated Intel HD graphics
Bays	<ul style="list-style-type: none"> (1) Slimline optical drive bay (1) external 3.5-inch (1) internal 3.5-inch storage drive bay (1) internal 2.5-inch storage drive bay
I/O Interfaces	Front: (2) USB 3.0 ports, (2) USB 2.0 ports, headphone jack, microphone jack Rear: (2) USB 3.0 ports, (4) USB 2.0 ports, (2) DisplayPort, VGA, serial port, PS/2 mouse and keyboard, RJ-45 network connector, 3.5mm audio in/out jacks
Preinstalled Operating Systems	<ul style="list-style-type: none"> Windows 8 Windows 7 Novell SUSE Linux Enterprise Desktop 11 FreeDOS 2.0

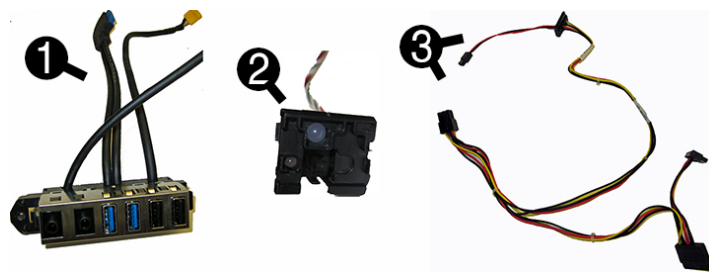
Spare Parts



System Unit

1	Front bezel	732757-001
2	Access panel	732760-001
3	Power supply, 92% efficient	702455-001
*	Power supply, 90% efficient	702456-001
*	Power supply, standard	702457-001
*	Optical drive bezel blank	732769-001

* Not shown



Cables

1	Front I/O assembly	732755-001
2	Power switch assembly	732756-001
3	SATA drive power cable	732759-001
*	Hard drive SATA cable, 14 inch, 1 straight end, 1 angled end	732753-001
*	Optical drive SATA cable, 19.5 inch, 2 straight ends	638813-001
*	DMS-59 to dual VGA cable	463023-001
*	Adapter, DisplayPort to VGA	632484-001
*	Adapter, DisplayPort to DVI	662723-001
*	Adapter, DisplayPort to HDMI	617450-001
*	Adapter, DVI to VGA	657401-001
*	Adapter, DVI-I to VGA	720216-001
*	DisplayPort cable	487562-001

*Not shown

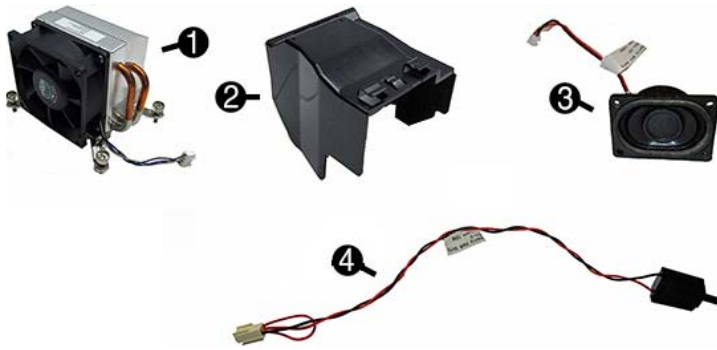
Keyboards (not illustrated)

PS/2	724718-xx1
USB	724720-xx1
Wireless	724722-xx1
Smart card	701427-xx1
Smart card, CCID	701671-001
Wireless (keyboard, mouse, dongle)	730323-xx1
Washable*	700510-xx1
Arabic	-17x LA Spanish -16x
Belgian	-18x Norwegian -09x
Brazilian Portuguese	-20x People's Republic of China -AAx
Bulgaria	-26x Portuguese -13x
Czech	-22x Romanian -27x
Danish	-08x Russian -25x
Finnish	-35x Saudi Arabia -DEx
French	-05x Slovakian -23x
French Canadian	-12x South Korea -KDx
German	-04x Spanish -07x
Greek	-15x Swedish -10x
Hebrew	-BBx Swiss -11x
Hungarian	-21x Taiwanese -ABx
International	-37x Thai -28x
International English	-L3x Turkish -14x
Italian	-06x U.S. -00x
Japanese	-29x U.K. -03x

*-001, -121, -161, -201 only

Mass Storage Devices (not illustrated)

DVD-ROM drive	608394-001
DVD±RW drive	657958-001
Blu-ray BD-RW SuperMulti XL Drive	719157-001
2 TB, 7200 rpm hard drive	616608-001
1 TB, hybrid SSD, 2.5-inch hard drive	724937-001
1 TB, 7200 rpm hard drive	613202-001
500 GB hard drive, hybrid SSD, 2.5-inch hard drive	724938-001
500 GB, 7200 rpm hard drive, self-encrypting (SED), 2.5-inch hard drive	696442-001
500 GB, 7200 rpm hard drive	613208-001
256 GB Solid State Drive (SSD), self-encrypting (SED)	680020-001
160 GB Solid State Drive (SSD)	646809-001
128 GB Solid State Drive (SSD)	665961-001
128 GB Solid State Drive (SSD), TCG	728559-001
120 GB Solid State Drive (SSD)	661841-001



Miscellaneous Parts

1	Fan sink	727150-001
2	Fan duct	727145-001
3	Speaker, 40mm x 70mm	727149-001
4	Hood sensor	638816-001
*	Card reader, 14-in-1, USB 3.0, 3.5-inch	716390-001
*	Solenoid lock	732772-001
*	Printer port, PCI card	638817-001
*	HP UltralSlim Keyed Cable Lock	703372-001
*	Rubber foot	583654-001
*	Chassis stand	688952-001
*	Serial port, PCI card	638815-001
*	Adapter, 2.5-inch hard drive	586721-001
*	Hard drive grommet for use on 2.5-inch drives	594220-001
*	Hard drive grommet for use on 3.5-inch drives	450712-001
*	Hard drive carrier, 2.5-inch to 3.5-inch	703597-001
*	Hard drive conversion bracket	397117-001
*	WLAN antennas	583345-001
*	Mouse, PS2, optical	674315-001
*	Mouse, USB, HP Elite	674318-001
*	Mouse, washable	724795-001
*	Mouse, wireless, HP Elite	674317-001
*	Mouse, USB, optical	674316-001

*Not shown

Diagnostic LEDs

LED	Color	LED Activity	State/Message
Power	White	On	Computer on
Power	White	1 blink every 2 seconds	Normal Suspend Mode
Power	Red	1 blink every second followed by a 2 second pause	CPU thermal shutdown
Power	Red	3 blinks, 1 blink every second followed by a 2 second pause	Processor not installed
Power	Red	4 blinks, 1 blink every second followed by a 2 second pause	Power failure (power supply overload)
Power	Red	5 blinks, 1 blink every second followed by a 2 second pause	Pre-video memory error
Power	Red	6 blinks, 1 blink every second followed by a 2 second pause	Pre-video graphics error
Power	Red	7 blinks, 1 blink every second followed by a 2 second pause	System board failure (ROM)
Power	Red	8 blinks, 1 blink every second followed by a 2 second pause	Invalid ROM based on Checksum
Power	Red	9 blinks, 1 blink every second followed by a 2 second pause	System powers on but is unable to boot
Power	Red	10 blinks, 1 blink every second followed by a 2 second pause	Bad option card
Power	Red	11 blinks, 1 blink every second followed by a 2 second pause	Current processor does not support a feature previously enabled.
none	none	System does not power on and LEDs are not flashing	System unable to power on

Standard and Optional Boards (not illustrated)

System board (includes replacement thermal material)	
System board for use in models without Windows 8	696794-001
System board for use in models with Windows 8 Standard	696794-501
System board for use in models with Windows 8 Professional	696794-601
System board for use in models with Windows 8 Professional	726848-001
Memory modules (PC3-12800, CL11)	
8-GB	689375-001
4-GB	671613-001
2-GB	671612-001
Other boards	
nVidia Quadro NVS315 PCIe x16 graphics card, 1 GB	720837-001
nVidia Quadro NVS310 PCIe x16 graphics card, 512 MB	707252-001
AMD Radeon HD8490 PCIe x16 graphics card, 1 GB	717219-001
AMD Radeon HD8350 DH PCIe x16 graphics card, 1 GB DDR3	717220-001
Intel PRO/1000 single port GbE NIC, includes bracket	728562-001
HP WLAN 802.11 a/b/g/n 2x2 PCIe module	695915-001
HP WLAN/Bluetooth module	733687-001
Intel Core i7 processors (include thermal material)	
4770, 3.4 GHz, 8-MB L3 cache	727373-001
Intel Core i5 processors (include thermal material)	
4670, 3.4 GHz, 6-MB L3 cache	727381-001
4570, 3.2 GHz, 6-MB L3 cache	727380-001

Common POST Error Messages

Screen Message	Probable Cause	Recommended Action
101-Option ROM Error	1. System ROM checksum error. 2. Expansion board option ROM checksum	1. Verify ROM, reflash if required 2. Remove suspected card, reboot 3. Clear CMOS memory, reboot 4. Replace system board
103-System Board Failure	DMA, timers	1. Clear CMOS memory. 2. Remove expansion boards. 3. Replace system board.
164-Memory Size Error and 201-Memory Error	Incorrect memory configuration	1. Run Setup (F10). 2. Check DIMMs for proper seating, type, and HP compatibility. 3. Remove DIMMs singularly and reboot to isolate faulty DIMM. 4. Replace system board.
214-DIMM Configuration Warning	Populated DIMM configuration is not optimized	Rearrange the DIMMs so that each channel has the same amount of memory.
301-, 304-Keyboard error	Keyboard failure.	Check keyboard connection or keys. Check connector for bent or missing pins. Replace keyboard. If 304, possible system board problem.
501-Display Adapter Failure	Graphics display controller.	1. Reseat graphics card. 2. Clear CMOS. 3. Check monitor connection. 4. Replace graphics card.
1720-SMART Hard Drive Detects Imminent Failure	Hard drive is about to fail.	1. Determine if hard drive is giving correct error message. Enter Computer Setup and run the Drive Protection System test under Storage > DPS Self-test . 2. Apply hard drive firmware patch if applicable. 3. Back up contents and replace hard drive.

System Setup and Boot

Access the Setup Utility during computer boot by pressing the **F10** key. If you do not press **F10** at the appropriate time, you must restart the computer and again press **F10** when the monitor light turns green. NOTE: Not all settings are available for all models.

Computer Setup Menu

Heading	Option/Description	
File	System Information - Lists the following main system specifications: <ul style="list-style-type: none"> Product name SKU number (some models) Processor type/speed/stepping Cache size (L1/L2/L3) Installed memory size/speed/ch Integrated MAC Address System BIOS Chassis serial number Asset tracking number ME firmware version ME management mode 	
	About - Displays copyright notice.	
	Set Time and Date - Allows you to set system time and date.	
	Replicated Setup - Allows you to save or restore system configuration to/from a USB flash drive.	
	Default Setup - Allows you to save current settings as default or restore factory settings as default.	
	Apply Defaults and Exit - Applies the selected default settings and clears any established passwords.	
	Ignore Changes and Exit - Exits Computer setup without saving changes.	
	Save Changes and Exit - Saves changes to system configuration or default settings and exits Computer Setup.	
	Storage	Device Configuration - Lists all installed BIOS-controlled storage devices. The following options are available: <ul style="list-style-type: none"> CD-ROM Hard Disk Default Values Translation Mode SSD Life Used SMART (ATA disks only) Diskette SATA Defaults
		Storage Options - Allows you to set: <ul style="list-style-type: none"> SATA Emulation - Choose how the SATA controller and devices are accessed by the OS. SATA Emulation choices are AHCI, RAID, or IDE. Removable Media Boot - Enables/disables ability to boot the system from removable media.
DPS Self-Test - Execute self-tests on ATA hard drives capable of performing the Drive Protection System (DPS) self-tests.		
Boot Order - Specify boot order for UEFI and legacy boot sources. Also specify hard drive boot order. <ul style="list-style-type: none"> Shortcut to Temporarily Override Boot Order 		
Security		Setup Password - Set and enable the setup (Admin) password.
	Power-On Password - Set and enable power-on password.	
	Password Options - Allows you to enable/disable: <ul style="list-style-type: none"> Lock Legacy Resources Setup Browse Mode Password prompt on F9 & F12 Network Server Mode 	
	Smart Cover - Allows you to lock/unlock the smart cover and set the cover removal sensor to disable/notify user/setup password.	
	Device Security - Set Device Available/Device Hidden for: embedded security device, system audio, network controller, USB controller, serial/parallel ports, and SATA ports.	
	USB Security - Set Device Available/Device Hidden for front USB ports, rear USB ports, internal USB ports, accessory USB ports.	
	Slot Security - Disable the PCI, PCIe, and Mini Card slots.	
	Network Boot - Enables/disables boot from OS (NIC models only).	
	System IDs - Allows you to update asset tag, ownership tag, UUID, keyboard locale setting.	
	Master Boot Record Security - enables/disables MBR.	
	System Security - Allows you to set: <ul style="list-style-type: none"> Data Execution Prevention (enable/disable) SVM CPU Virtualization (enable/disable) Virtualization Technology (VTx) (enable/disable) Virtualization Technology/Directed IO (VTd) (enable/disable) Trusted Execution Technology (enable/disable) Embedded Security Device (enable/disable) Reset to Factory Settings (Do not reset/Reset) Measure boot variables/devices to PCR1 (enable/disable) OS management of Embedded Security Device (enable/disable) Reset of Embedded Security Device through OS (enable/disable) No PPI provisioning (Windows 8 only; enable/disable) Allow PPI policy to be changed by OS (enable/disable) 	
	DriveLock Security - Allows you to assign or modify a master or user password for hard drives.	
	Secure Boot Configuration (Windows 8 only) <ul style="list-style-type: none"> Legacy Support (enable/disable) Secure Boot (enable/disable) Key Management (enable/disable) Fast Boot (enable/disable) 	
	Power	OS Power Management - Allows you to enable/disable Runtime Power Management, Idle Power Savings, Unique Sleep State Blink Rates.
		Hardware Power Management - Enable/disable SATA power management, S5 maximum power savings, PCI slots, network controller, USB 3.0 controller
		Thermal - Control minimum fan speed.
	Advanced	Power-On Options - Allows you to set: <ul style="list-style-type: none"> POST mode (QuickBoot, Clear Memory, FullBoot, or FullBoot Every x Days) POST messages (enable/disable) Press the ESC key for Startup Menu (enable/disable) Option ROM Prompt (enable/disable) After Power Loss (off/on/previous state) POST Delay (none, 5, 10, 15, 20, or 60 seconds) Remote Wakeup Boot Source (remote server/local hard drive) Factory Recovery Boot Support (enable/disable) Bypass F1 Prompt on Configuration Changes (enable/disable)
BIOS Power-On - Set the computer to turn on at a preset time.		
Advanced (continued)	Bus Options - Allows you to enable/disable PCI SERR# Generation and PCI VGA palette snooping.	
	Onboard Devices - Allows you to set resources for or disable on-board system devices.	

- Device Options - Allows you to set:
- Printer mode (Bi-Directional, EPP + ECP, Output Only)
 - Num Lock State at Power-on (off/on)
 - Integrated Video (enable/disable)
 - Integrated Graphics (Auto/Disable/Force)
 - Internal Speaker (enable/disable)
 - NIC PXE Option ROM Download (enable/disable)
 - SATA RAID Option ROM Download (enable/disable)
 - Multi-Processor (enable/disable)
 - Hyper-threading (enable/disable)
 - Turbo Mode (enable/disable)

VGA Configuration - Allows you to specify which VGA controller is the "boot"/primary. Displayed only if add-in video card installed.

- AMT Configuration - Allows you to set:
- AMT (enable/disable)
 - Unconfigure AMT/ME (enable/disable)
 - Hide Unconfigure ME Confirmation Prompt (enable/disable)
 - Watchdog Timer (enable/disable)

Password Security

Establishing a Setup or Power-On password:

- Turn on or restart the computer.
- As soon as the computer turns on, press the **Esc** key while "Press the ESC key for Startup Menu" message is displayed at the bottom of the screen.
- Press the **F10** key to enter Computer Setup.
- To establish Setup password, select **Security > Setup Password** and follow the instructions.
 - or -
 - To establish a Power-On password, select **Security > Power-On Password** and follow the instructions on the screen
- Before exiting, click **File > Save Changes and Exit**.

Changing a Setup or Power-On password:

- Turn on or restart the computer.
 - To change the Setup password, go to step 2.
 - To change the Power-on password, go to step 3.
- To change the Setup password, as soon as the computer turns on:
 - Press the **Esc** key while "Press the ESC key for Startup Menu" message is displayed.
 - Press the **F10** key to enter Computer Setup.
- When the key icon appears, type your current password, a slash (/) or alternate delimiter character, your new password, another slash (/) or alternate delimiter character, and your new password again as shown:

current password/new password/new password.

NOTE: Type the new password carefully since the characters do not appear on the screen.
- Press **Enter**.

The new password will take effect the next time the computer is restarted.

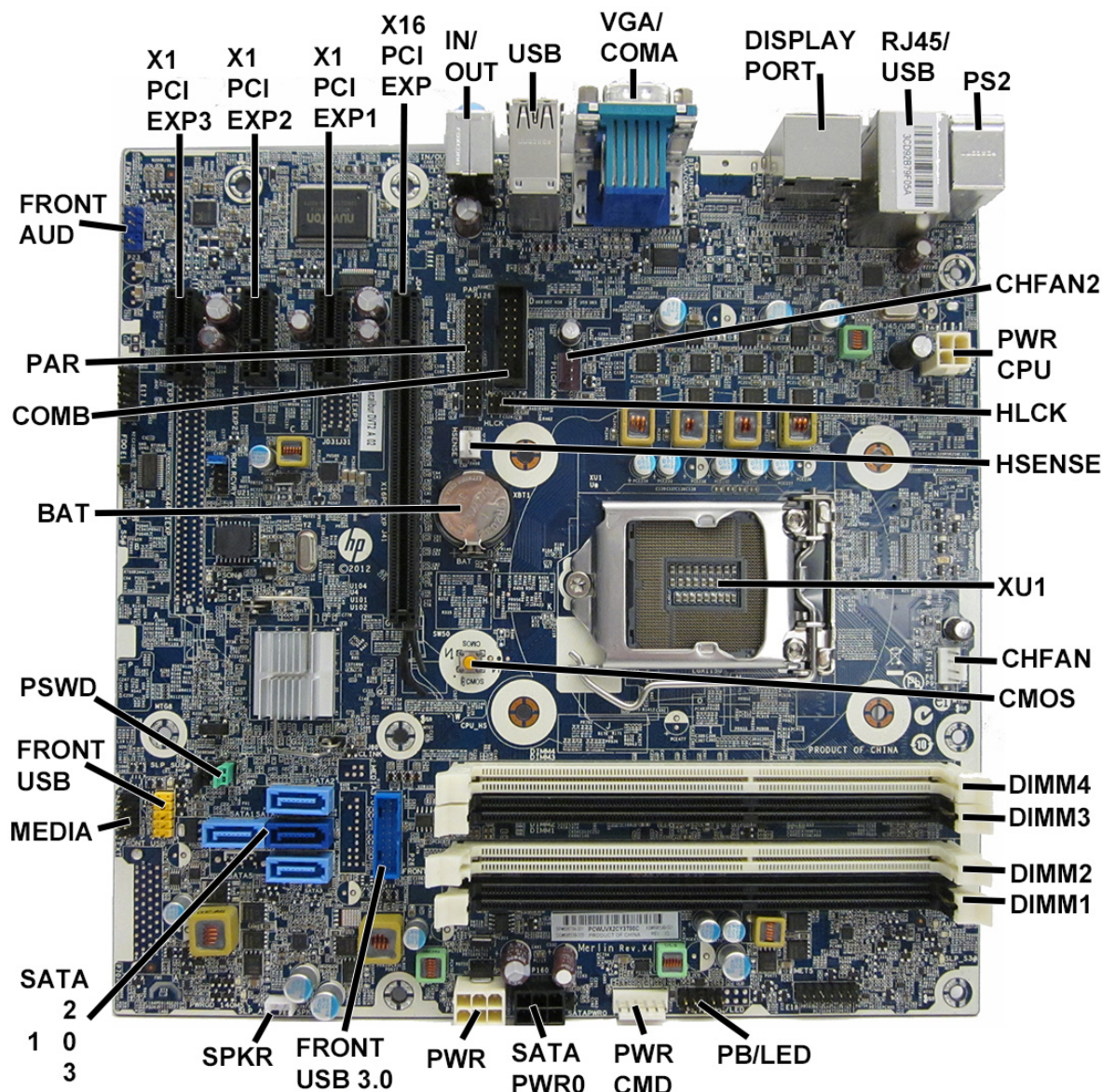
Deleting a Power-On or Setup password

- Turn on or restart the computer.
 - To delete the Setup password, go to step 2.
 - To delete the Power-On password, go to step 3.
- To change the Setup password, as soon as the computer turns on:
 - Press the **Esc** key while "Press the ESC key for Startup Menu" message is displayed.
 - Press the **F10** key to enter Computer Setup.
- When the key icon appears, type your current password followed by a slash (/) or alternate delimiter character as shown. Example: *currentpassword/*
- Press **Enter**.

Clearing CMOS

- Turn off the computer and disconnect the power cord from the power outlet.
- Remove the access panel.
- On the system board, press and hold the CMOS button for 5 seconds.
- Replace the chassis access panel and reconnect the power cord.
- Turn on the computer and allow it to start.

System Board



System Board Connectors and Jumpers (component location may vary)

X1PCIEXP3	PCI Express x1 slot	DIMM2	Memory socket - Channel B
X1PCIEXP2	PCI Express x1 slot	DIMM1	Memory socket - Channel B
X1PCIEXP1	PCI Express x1 slot	PB/LED	Power switch connector
X16PCIEXP	PCI Express x16 slot	PWR CMD	Power connector
IN//OUT	Audio connectors	SATA PWR0	Optical drive power connector
USB	USB connectors	PWR	Main power connector
VGA/COMA	Monitor connector/serial port	FRONT USB 3.0	Front USB 3.0 port connector
DISPLAYPORT	DisplayPort connector	SPKR	Speaker connector
RJ45/USB	Network/USB connectors	SATA0	Primary hard drive
PS2	PS/2 keyboard/mouse connectors	SATA1	Any SATA Device other than the primary hard drive
CHFAN2	System fan connector	SATA2	Any SATA Device other than the primary hard drive
PWRCPU	CPU power connector	SATA3	Any SATA Device other than the primary hard drive
HLOCK	Hood lock connector	MEDIA	Media card reader connector
HSENSE	Hood sensor connector	FRONT_USB	1st USB connector
XU1	Processor socket	PSWD	Password header
CHFAN	Fan connector	BAT	RTC battery socket
CMOS	CMOS header	COMB	Serial port
DIMM4	Memory socket - Channel A	PAR	Parallel port connector
DIMM3	Memory socket - Channel A	FRNT AUD	Front panel connector