

Technics®



EAH-A800

Digital Wireless Stereo Headphones
Owner's Manual

Thank you for purchasing this product.
Please read these instructions carefully before using this product, and save this manual for future use.

Register online at <http://shop.panasonic.com/support> (U.S. customers only)

If you have any questions, visit:
In the U.S.A.:
<http://shop.panasonic.com/support>
In Canada:
www.panasonic.ca/english/support

IMPORTANT SAFETY INSTRUCTIONS

Read these operating instructions carefully before using the unit. Follow the safety instructions on the unit and the applicable safety instructions listed below. Keep these operating instructions handy for future reference.

- 1 Do not use this apparatus near water.
- 2 Protect the power cord from being walked on or pinched particularly at plugs, convenience receptacles, and the point where they exit from the apparatus.
- 3 Unplug this apparatus during lightning storms or when unused for long periods of time.
- 4 Refer all servicing to qualified service personnel. Servicing is required when the apparatus has been damaged in any way, such as power-supply cord or plug is damaged, liquid has been spilled or objects have fallen into the apparatus, the apparatus has been exposed to rain or moisture, does not operate normally, or has been dropped.
- 5 Clean only with dry cloth.

Safety precautions



A lithium ion battery that is recyclable powers the product you have purchased.
Please call 1-800-8-BATTERY for information on how to recycle this battery.

For US and Canada only
Pour les É.-U. et le Canada seulement

THE FOLLOWING APPLIES ONLY IN THE U.S.A. AND CANADA.

This device complies with Part 15 of FCC Rules and Innovation, Science and Economic Development Canada's licence-exempt RSS(s). Operation is subject to the following two conditions:

(1) this device may not cause interference, and

(2) this device must accept any interference, including interference that may cause undesired operation.

FCC ID: ACJ-EAH-A800

Model: EAH-A800

IC: 216A-EAHA800

This transmitter must not be co-located or operated in conjunction with any other antenna or transmitter.

(For the U.S.A. only)

This equipment complies with FCC radiation exposure limits set forth for an uncontrolled environment and meets the FCC radio frequency (RF) Exposure Guidelines as this equipment has very low levels of RF energy.

(For Canada only)

EAH-A800 has been tested and found to comply with ISED radiation exposure limits set forth for an uncontrolled environment and meets RSS-102 of the ISED radio frequency (RF) Exposure rules.

THE FOLLOWING APPLIES ONLY IN THE U.S.A.**FCC Note:**

This equipment has been tested and found to comply with the limits for a Class B digital device, pursuant to Part 15 of the FCC Rules.

These limits are designed to provide reasonable protection against harmful interference in a residential installation. This equipment generates, uses, and can radiate radio frequency energy and, if not installed and used in accordance with the instructions, may cause harmful interference to radio communications.

However, there is no guarantee that interference will not occur in a particular installation. If this equipment does cause harmful interference to radio or television reception, which can be determined by turning the equipment off and on, the user is encouraged to try to correct the interference by one or more of the following measures:

- Reorient or relocate the receiving antenna.
- Increase the separation between the equipment and receiver.
- Connect the equipment into an outlet on a circuit different from that to which the receiver is connected.
- Consult the dealer or an experienced radio/TV technician for help.

FCC Caution:

Any unauthorized changes or modifications to this equipment would void the user's authority to operate this device.

This device complies with Part 15 of the FCC Rules. Operation is subject to the following two conditions: (1) This device may not cause harmful interference, and (2) this device must accept any interference received, including interference that may cause undesired operation.

Supplier's Declaration of Conformity

Trade Name: Technics

Model No.: EAH-A800

Responsible Party: Panasonic Corporation of North America
Two Riverfront Plaza, Newark, NJ 07102-5490

Support Contact: <http://shop.panasonic.com/support>

THE FOLLOWING APPLIES ONLY IN CANADA.

CAN ICES-3(B)/NMB-3(B)

■ Unit

WARNING:

To reduce the risk of fire, electric shock or product damage,

- **Do not expose this unit to rain, moisture, dripping or splashing.**
- **Do not expose units containing batteries to excessive heat (e.g., from storage in direct sunlight, fire or the like).**
- **Use only manufacturer's recommended accessories.**
- **Do not disassemble the product.**
- **Do not repair this unit by yourself. Refer servicing to qualified service personnel.**

Avoid the use in the following conditions

- High or low extreme temperatures during use, storage or transportation.
 - Disposal of a battery into fire or a hot oven, or mechanically crushing or cutting of a battery, that can result in an explosion.
 - Extremely high temperature and/or extremely low air pressure that can result in an explosion or the leakage of flammable liquid or gas.
- Do not place this unit near a heat source.
 - Do not listen with this unit at high volume in places where you need to hear sounds from the surrounding environment for safety, such as at railroad crossings, and construction sites.
 - Keep this unit away from something susceptible to the magnetism. Such devices as a clock may not operate correctly.
 - When using this unit in an airplane, heed the instructions given by the airline company. Some airlines may forbid your using the unit. For further details, contact the airline you will be flying with.
 - Do not wear the headphones while charging.
 - Contains small parts which may be a choking hazard. Not suitable for children under age 3.
 - This product contains magnetic material. Consult your physician on whether this might affect your implantable medical device.
 - Keep the airplane adaptor out of reach of children to prevent swallowing.
 - Proper charging is not possible if there is dust or droplets of water on the charging terminal of the headphones. Remove the dust or water droplets before charging.
 - Be aware that this unit may get warm while charging or immediately after charging. Depending on your constitution and health status, putting the headphones on may trigger adverse reactions such as skin redness, itching, and rash if the headphones have just been disconnected from the power source and are still warm.
 - Do not use any other USB charging cords except the supplied one.
 - Do not use any other detachable cords except the supplied one.

■ Battery

- Do not heat or expose to flame.
- Do not leave the battery in a car exposed to direct sunlight for a long period of time with doors and windows closed.
- Battery mishandling can cause electrolyte leakage which can damage items the leaked fluid comes into contact with. If electrolyte leaks from the battery, consult your dealer. Wash thoroughly with water if electrolyte comes in contact with any part of your body.
- When disposing of the battery, please contact your local authorities or dealer and ask for the correct method of disposal.

■ Allergies

- Discontinue use if you experience discomfort with the ear pads or any other parts that directly contact your skin.
- Continued use may cause rashes or other allergic reactions.

■ Precautions for listening with the Headphones

- Excessive sound pressure from earphones and headphones can cause hearing loss.
- Do not use your headphones at a high volume. Hearing experts advise against continuous extended play.
- If you experience a ringing in your ears, reduce volume or discontinue use.
- Do not use while operating a motorised vehicle. It may create a traffic hazard and is illegal in many areas.
- You should use extreme caution or temporarily discontinue use in potentially hazardous situations.
- Do not use the headphones if they emit any loud unusual noise. If this happens, turn the headphones off and contact customer service.
- Remove headphones immediately if you experience a warming sensation or loss of audio.
- The headphones do not play audio while charging.

This unit may receive radio interference caused by mobile telephones during use. If such interference occurs, please increase separation between this unit and the mobile telephone.

Use only the supplied USB charging cord when connecting to a computer.

The symbols on this product (including the accessories) represent the following:

— : DC

⏻ : Standby

I : ON



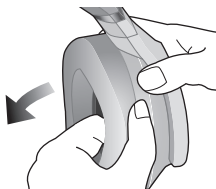
Intertek
4004466

Conforms to
UL STD 62368-1.
Certified to CAN/CSA STD
C22.2 No.62368-1.
Conforme à la norme CAN/CSA
C22.2 No.62368-1.

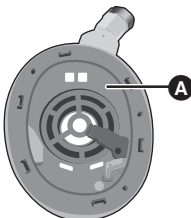
- 1 Remove the left ear pad to view certification information.
- 2 Certification information (A) is indicated on the speaker plate portion, which becomes visible when the left ear pad (L side) is removed.
- 3 To attach the ear pad, insert the clips (B) into the matching parts (C) on the ear pad. (There are 6 clips)

If you pull the ear pad too much, the ear pad can tear.

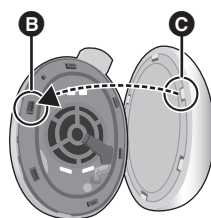
1



2



3



About Bluetooth®

Panasonic bears no responsibility for data and/or information that is compromised during a wireless transmission.
--

■ Frequency band used

This unit uses the 2.4 GHz frequency band.

■ Certification of this unit

- This unit conforms to frequency restrictions and has received certification based on frequency laws. Thus, a wireless permit is not necessary.
- The actions below are punishable by law in some countries:
 - Taking apart/modifying this unit.
 - Removing specification indications.

■ Restrictions of use

- Wireless transmission and/or usage with all Bluetooth® equipped devices is not guaranteed.
- All devices must conform to standards set by Bluetooth SIG, Inc.
- Depending on the specifications and settings of a device, it can fail to connect or some operations can be different.
- This unit supports Bluetooth® security features. But depending on the operating environment and/or settings, this security may not be sufficient. Transmit data wirelessly to this unit with caution.
- This unit cannot transmit data to a Bluetooth® device.

■ Range of use

Use this unit at a maximum range of 10 m (33 ft).

The range can decrease depending on the environment, obstacles or interference.

■ Interference from other devices

- This unit may not function properly and troubles such as noise and sound jumps may arise due to radio wave interference if this unit is located too close to other Bluetooth® devices or the devices that use the 2.4 GHz band.
- This unit may not function properly if radio waves from a nearby broadcasting station, etc. is too strong.

■ Intended usage

- This unit is for normal, general use only.
- Do not use this system near an equipment or in an environment that is sensitive to radio frequency interference (example: airports, hospitals, laboratories, etc).

Table of contents

IMPORTANT SAFETY INSTRUCTIONS	2
Safety precautions	2
About Bluetooth®	6
Before use	
<hr/>	
Accessories	8
Maintenance.....	8
Part names	9
Preparation	
<hr/>	
Charging.....	10
Turning the power on/off	11
Install the app “Technics Audio Connect”	12
Connecting a Bluetooth® device	13
• Pairing procedure - When pairing your headphones first time with a Bluetooth® device	13
• Connecting 2nd Bluetooth® device	14
Operation	
<hr/>	
Listening to music	15
• Remote controlling.....	16
Making a phone call	17
Using the external sound control.....	18
Useful functions.....	19
• Using the app “Technics Audio Connect”	19
• Activating voice functions	19
• Creating multi-point connections	20
• Battery level notification.....	20
• Using the detachable cord (supplied)	21
• Resetting the unit	21
Other	
<hr/>	
Restoring to the factory settings.....	22
Copyright, etc.	23
Troubleshooting.....	24
• Sound and audio volume.....	24
• Bluetooth® device connection	24
• Phone Calls	25
• General.....	25
• Power supply and charging	26
Storage of the unit	27
Specifications	28
To remove the battery when disposing of this unit	30
Useful information (Only for Latin American countries).....	32

Expressions used in this document

- Pages to be referred to are indicated as “→ ○○”.
- The product illustrations may differ from the actual product.

Accessories

Please check and identify the supplied accessories.

To order accessories, contact the dealer from whom you have made your purchase.

1 x Carrying case

1 x USB charging cord

1 x Detachable cord

1 x Airplane adaptor

Only for U.S.A.:

To order accessories, refer to “Limited Warranty (ONLY FOR U.S.A.)” on “Safety Instructions”.

Maintenance

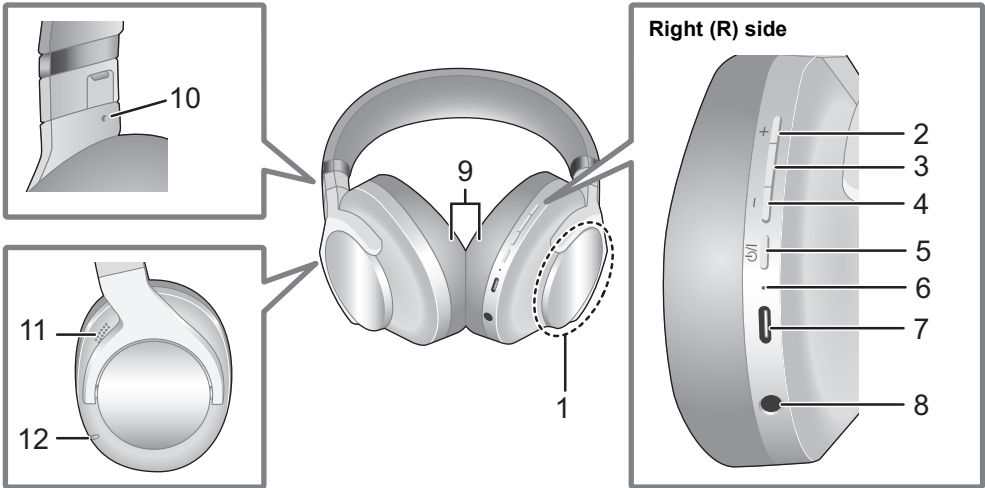
Clean this unit with a dry and soft cloth.

- When the unit is very dirty, wipe off the dirt with a cloth that has been dipped in water and well wrung, then wipe with a dry cloth.
- Do not use solvents including benzine, thinner, alcohol, kitchen detergent, a chemical wiper, etc. This might cause the exterior case to be deformed or the coating to come off.

Keeping the battery performance.

- During the long period of disuse, full charge this unit once every 6 months to keep the battery performance.

Part names



- 1 Touch sensor
 - Touch this sensor to switch the external sound control mode.
 - The touch sensor responds to operations only when this unit is worn.
- 2 [+] button
- 3 Multi function button
 - You can perform a variety of operations by pressing this button.
- 4 [-] button
- 5 [P/I] button*1
- 6 LED indicator*2
 - Lights or blinks to indicate the status of this unit.
- 7 Charging terminal (DC IN)
 - Connect the USB charging cord (supplied) to this terminal when charging. (→ 10, "Charging")
- 8 Audio input terminal
 - This unit can be used as normal headphones by connecting the detachable cord (supplied).
- 9 Ear pads
- 10 Raised dot indicating the left side
- 11 Microphones for noise canceling
- 12 Microphones for calls

*1 P/I : Standby/ON

*2 Examples of lighting/blinking patterns

Lighting (red)	Charging is in progress
Lighting alternately in blue and red	Bluetooth® pairing (registration) standby
Blinking slowly (blue)*3	Bluetooth® connection standby
Blinking twice about every 2 seconds (blue)*3	A Bluetooth® pairing (registration) has been established or a call is in progress
Blinking (blue)*3	A call is being received

*3 The battery is low when it is blinking in red. (→ 20, "Battery level notification")

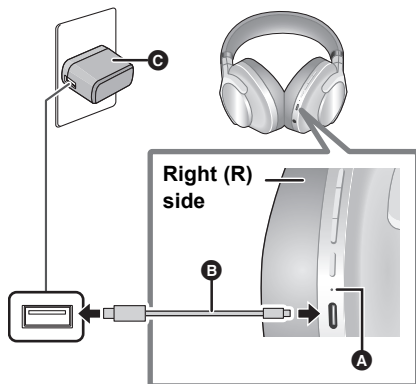
Charging

The rechargeable battery (installed in the unit) is not charged initially. Charge the battery before using the unit.

- Proper charging is not possible if there is dust or droplets of water on the charging terminal of the headphones.
- Remove the dust or water droplets before charging.
- Be aware that this unit may get warm while charging or immediately after charging. Depending on your constitution and health status, putting the headphones on may trigger adverse reactions such as skin redness, itching, and rash if the headphones have just been disconnected from the power source and are still warm.

Use the USB charging cord (supplied) (B) to connect this unit to a 5.0 V power source (1200 mA or higher) (C).

- A:** LED indicator
 - B:** USB charging cord (supplied)
 - Check the direction of the terminals and plug in/out straight holding onto the plug. (It may result in malfunction by the deforming of the terminal if it is plugged in obliquely or in wrong direction.)
 - C:** Power source (e.g., AC adaptor)
 - Power source (e.g., AC adaptor) is indicated as AC adaptor in the text.
- The LED indicator lights in red when charging is in progress. When charging is completed, the LED indicator will go out.
 - It takes approx. 3 hours to charge the battery from empty to full.



Note

- Charge in a room temperature between 10 °C and 35 °C (50 °F and 95 °F). Outside of this temperature range, charging may stop and the LED indicator may go out.
- It is not possible to turn the power on or connect to Bluetooth® devices during charging.
- Do not use any other USB charging cords except the supplied one. Doing so may cause malfunction.

Turning the power on/off

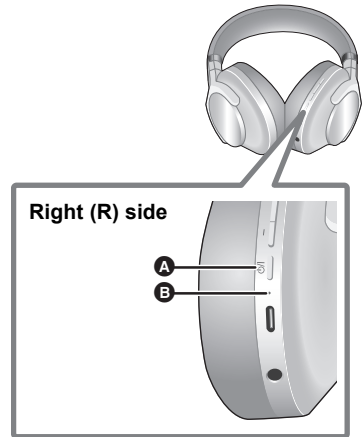
In the power-off state, press and hold [⏻/I] of this unit for approx. 2 seconds until the LED indicator lights for 1 second.

- Ⓐ: [⏻/I] button
- Ⓑ: LED indicator

• A beep will sound, and the LED indicator will blink slowly.

■ To turn the power off

Press and hold [⏻/I] for approximately 2 seconds. A tone and English guidance message will be heard, and the power will be turned off.



Install the app “Technics Audio Connect”

By creating a Bluetooth® connection with a smartphone or tablet installed with the “Technics Audio Connect” app (free of charge), you can enjoy a wide variety of features, such as the following:

- Software updates
- Change the functions assigned to the touch sensors (Customization of touch sensor)
- Customization of various settings (Connection mode setting/Auto power off setting/Guidance language setting, etc.)
- Check remaining battery charge
- Access to this document

Preparation

- Turn on the unit.

1 Download the “Technics Audio Connect” app (free of charge) to the smartphone or tablet.



Android:
Google Play



iOS:
App Store



2 Start up the “Technics Audio Connect” app.

- Follow the on-screen instructions to operate.

Note

- Always use the latest version of the “Technics Audio Connect” app.
- There may sometimes be changes made to the operating procedures, displays, etc., on the “Technics Audio Connect” app. Refer to the support site for details.

Connecting a Bluetooth® device

Preparation

- Place the Bluetooth® device within approx. 1 m (3.3 ft) from the unit.
- Check the device operation using its operation instructions as required.
- Using the “Technics Audio Connect” app (free of charge) makes connecting with Bluetooth® simple.

Pairing procedure - When pairing your headphones first time with a Bluetooth® device

1 In the power-off state, press and hold [⏻/I] of this unit for approx. 2 seconds until the LED indicator lights for 1 second.

- The LED indicator will light alternately in blue and red.

Note: The LED indicator lights (Red/blue) to indicate that the unit is in pairing mode.

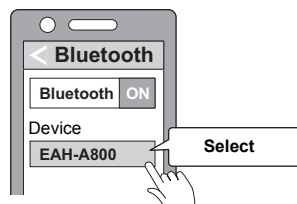
2 Turn on the power of the Bluetooth® device, and enable the Bluetooth® function.

3 Select “EAH-A800” from the Bluetooth® device’s menu.

- A BD address (Bluetooth® Device address: an alphanumeric character string that is displayed by and unique to the device) may be displayed before “EAH-A800” is displayed.
- If prompted for a passkey, input the passkey “0000 (four zeros)” of this unit.
- When the LED indicator blinks (blue)* twice at approximately 2 second intervals, pairing has been completed and connection has been established.

* The battery is low when it is blinking in red.

e.g.



4 Confirm that this unit and the Bluetooth® device are connected.

Note

- If the connection with the device does not complete within 5 minutes, the pairing mode on this unit cancels and they transition to connection standby mode. Perform pairing again.
- This unit remembers the device lastly connected. The unit may connect automatically after turning on the power of this unit.

Connecting 2nd Bluetooth® device

- 1 In the power-off state, press and hold [⏻/I] for at least 7 seconds until the LED indicator lights alternately in blue and red.**
 - Wait about 5 seconds after you turn off the power of the unit.
 - The LED indicator lights (Red/blue) to indicate that the unit is in pairing mode.
- 2 Perform steps 2 and 3 of “Pairing procedure - When pairing your headphones first time with a Bluetooth® device”. (→ 13)**
 - When the LED indicator (blue) blinks twice every approx. 2 seconds, pairing (registration) is completed.
(Connection established)

Note

- You can pair a maximum of 10 Bluetooth® devices with this unit. When you pair a device after the maximum has been exceeded, previous devices are overwritten. To use overwritten devices again, do the pairing again.
- It is easier to pair if you disable the Bluetooth® function of the first device when pairing with a device after the first.
- If the connection with the device does not complete within 5 minutes, the pairing mode on this unit cancels and they transition to connection standby mode. Perform pairing again.
- This unit remembers the device lastly connected. The unit may connect automatically after turning on the power of this unit.

Listening to music

If the Bluetooth® compatible device supports the “A2DP” and “AVRCP” Bluetooth® profiles, music can be played back with remote control operations on the unit.

- A2DP (Advanced Audio Distribution Profile): Transmits audio to the unit.
- AVRCP (Audio/Video Remote Control Profile): Allows remote control of the device using the unit.

1 **Connect the Bluetooth® device and the unit. (→ 13, “Connecting a Bluetooth® device”)**

2 **Select and play the music or the video on the Bluetooth® device.**

- The unit's headphones will output the music or the audio of the video being played back.
- Operating time may become shorter depending on the usage conditions.

■ Attention

- The unit might leak sound depending on the volume level.
- When the volume is increased to near maximum level, music may sound distorted. Decrease the volume until the distortion is cleared.

Note

- Playback will pause when you take off this unit. Even after you take off the headphones, music playback will resume if you put it on again within 60 seconds.

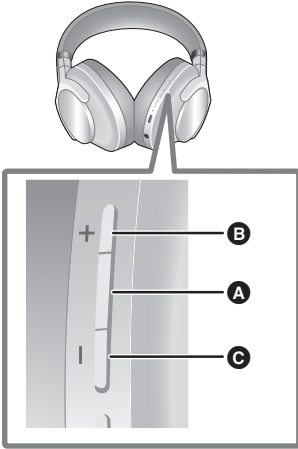
Remote controlling

You can control the Bluetooth® device using the unit.

- Depending on the Bluetooth® device or the app, even if you press buttons on the unit, some functions may not respond or may operate differently from the descriptions below.

(Operation example)

Right (R) side



Function	Operation
Play / Pause	Press the Multi function button. (A).
Increase the volume	Press [+] (B). • Press and hold [+] to continuously increase the volume.
Decrease the volume	Press [-] (C). • Press and hold [-] to continuously decrease the volume.
Forward to the start of next track	Press the Multi function button twice quickly.
Return to the start of current track*	Press the Multi function button three times quickly.
Fast forward	Press the Multi function button twice quickly; hold the second press.
Fast rewind	Press the Multi function button three times quickly; hold the third press.

* Depending on the Bluetooth® device or app, this may return you to the previous track.

Note

- A beep sounds to indicate that you have pressed to reach either the maximum or minimum volume level.

Making a phone call

With Bluetooth® enabled phones (cell phones or smartphones) that support the “HSP” or “HFP” Bluetooth® profile, you can use the unit for phone calls.

- **HSP (Headset Profile):**

This profile can be used to receive monaural sounds and establish two-way communication using the microphone on the unit.

- **HFP (Hands-Free Profile):**

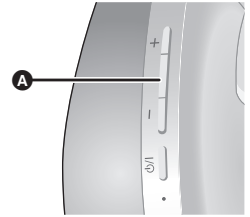
In addition to the HSP functions, this profile has the incoming and outgoing calls function.

(This unit does not have a function that allows you to make phone calls independently of a Bluetooth® enabled phone.)

1 Connect the Bluetooth® device and the unit. (→ 13, “Connecting a Bluetooth® device”)

2 Press the Multi function button (A) on the unit and answer the incoming call.

- During an incoming call, ringtone will sound from the unit and the LED indicator will blink.
- (HFP only) To reject the incoming call, press and hold the Multi function button for 2 seconds.
- If you answer a call using your iOS device, it may not be routed to EAH-A800 automatically. In this case, please review the instruction accessed by the QR code below.



3 Start talking.

- To mute the voice during a call, press the Multi function button twice quickly. (To cancel muting, press the Multi function button twice quickly again while muting.)
- To switch the noise level of the other party during a call, press the Multi function button 3 times quickly. Voices will be easier to hear when you reduce the audio noise from the other party. This function is effective in reducing the noise heard from continuous sources (ventilation fans, etc.) in the vicinity of the other party.
- The volume can be adjusted during a phone call. For setting instructions, see page 16.

4 Press and hold the Multi function button to end the phone call.

- A beep will sound.

Note

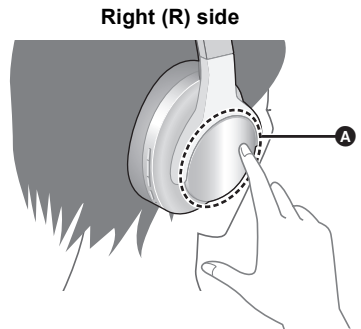
- There may be instances when hands free setting needs to be done on the Bluetooth® enabled phone.
- Depending on the Bluetooth® enabled phone, you may hear incoming and outgoing call ringtones of the phone from the unit.
- You can have the Bluetooth® enabled phone make phone calls by using the microphone of the unit and an app of the Bluetooth® enabled phone. (→ 19, “Activating voice functions”)

Using the external sound control

The external sound control function switches between Noise cancelling and Ambient sound.

1 While wearing this unit, touch the touch sensor (A) twice quickly.

- The mode is switched each time you touch the touch sensor twice quickly. (A guidance message will notify you of the mode you switched to.)



- The default level setting is “Noise cancelling”.
- When the “Technics Audio Connect” app is used, you can set to “OFF”.

2 Adjust the volume of the playback device.

■ Noise cancelling

Reduces the sounds (noise) you can hear from outside.

- Noise cancelling can be optimized with the “Technics Audio Connect” app. Adjust it beforehand to achieve the best condition.
- While using the noise cancelling function, a very small amount of noise which is generated from the circuit that reduces noise may be heard, but this is normal and not indicative of any trouble. (This very-low-level noise may be heard in quiet places or in the blank parts between tracks.)

■ Ambient sound

You can hear ambient sound through the microphones embedded in this unit while enjoying music.

Note

- You can change the functions assigned to the touch sensors on the “Technics Audio Connect” app (free of charge). (Customization of touch sensor) (→ 12)

Useful functions

Using the app “Technics Audio Connect”

By creating a Bluetooth® connection with a smartphone installed with the “Technics Audio Connect” app (free of charge), you can enjoy a wide variety of features, such as changing the settings on this unit. (→ 12)

Activating voice functions

You can use the Multi function button on this unit to activate the voice functions (Amazon Alexa, Siri etc.) on your smartphone or similar device.

- 1 Connect the Bluetooth® device and the unit. (→ 13, “Connecting a Bluetooth® device”)**
- 2 Press and hold the Multi function button until the voice function is activated.**
 - The voice assistant function on the Bluetooth® device is activated.

Note

- For details about voice function commands, refer to the operating instructions for the Bluetooth® device.
- The voice function may not work depending on the smartphone, etc., specifications and the app version.

After doing Step 1 above, complete the setup below to use Amazon Alexa as your voice assistant.

- 1 In the “Technics Audio Connect” app, select Amazon Alexa as your voice assistant.
 - 2 Follow the on-screen instructions to operate.
 - After signing into Amazon, you will need to add headphones in the device setup.
- Install the latest version of the Amazon Alexa app.
 - Alexa is not available in all languages and countries. Alexa features and functionality may vary by location.
 - For more details, refer to the manuals or similar support materials of the apps.

Creating multi-point connections

A maximum of two Bluetooth® devices can be connected at the same time.

The default setting is "OFF".

- When the "Technics Audio Connect" app is used, you can set to "ON".

For information about the connection and registration of Bluetooth® devices and the unit (→ 13, "Connecting a Bluetooth® device")

- 1 Pair this unit with each of the Bluetooth® devices.**
- 2 Connect the first Bluetooth® device and the unit.**
- 3 Connect the second Bluetooth® device and the unit.**

Note

- For more details, including more specific setup instructions, refer to the operating instructions for the Bluetooth® devices.
- This may not work with some apps and software.
- LDAC cannot be played back when this function is ON.

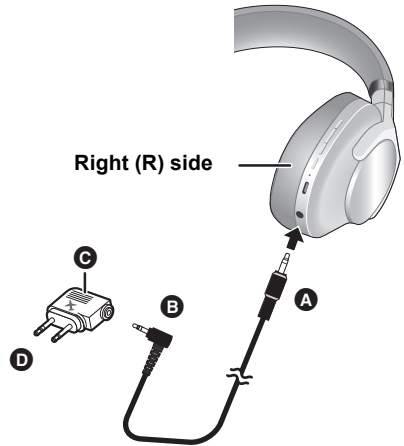
Battery level notification

- When the unit is turned off, an English guidance message will be heard indicating the battery level.
- When the battery level starts to run low, the blinking LED indicator will turn from blue to red, and as it drops further, you will be notified by one beep every 1 minute.* When the battery runs out, a tone and a guidance message will be heard and the power will turn off.
 - * If you press [⏻/⏻] twice quickly, an English guidance message will be heard and you can check the battery level.

Using the detachable cord (supplied)

While the power is turned off or the battery has no remaining charge, this unit can be used as normal headphones by connecting the detachable cord (supplied).

- Before connecting the detachable cord (supplied), lower the volume on the connected device.
- If you connect the detachable cord (supplied) when connected via Bluetooth®, the Bluetooth® connection will be lost.
- The Multi function button does not work even while the unit is turned on.
- Noise may occur due to dirt on the plug. Clean the plug with a soft dry cloth if this occurs.
- Do not use any other detachable cords except the supplied one.



■ To connect to an airplane audio system

- 1 **Connect the unit and the detachable cord (supplied). (A)**
- 2 **Connect the input plug (B) of the detachable cord (supplied) to the airplane adaptor (supplied) (C).**
- 3 **Connect the airplane adaptor to the in-airplane audio system. (D)**

Note

- The airplane adaptor may not fit the jacks in some in-airplane audio systems.

Resetting the unit

This unit can be reset when all operations are rejected. To reset the unit, press and hold [⏻/I] for 10 seconds or more. All the previous operations will be canceled. (The pairing device information will not be deleted.)

- The unit cannot be reset immediately after turning on the power of the unit. Wait about 30 seconds.

Restoring to the factory settings

When you want to delete all pairing device information, etc. in this unit, you can restore this unit to the factory settings (original settings upon purchase).

- 1 While the power is turned off, press and hold [⏻/I] for at least 7 seconds until the LED indicator lights alternately in blue and red.**
- 2 Release your finger from [⏻/I].**
- 3 Press and hold [⏻/I] and [+] for at least 5 seconds.**

- The default settings will be restored after the LED indicator (blue) blinks fast and the unit turns off.

■ Attention

- When pairing a device again, delete the registering information (Device: "EAH-A800") from the Bluetooth® device's menu, and register this unit with the Bluetooth® device again. (→ 13)
- Some setting values, such as the language settings for voice prompts and Amazon Alexa, are kept.

Copyright, etc.

The Bluetooth® word mark and logos are registered trademarks owned by Bluetooth SIG, Inc. and any use of such marks by Panasonic Corporation is under license.
Other trademarks and trade names are those of their respective owners.

Apple, the Apple logo and Siri are trademarks of Apple Inc., registered in the U.S. and other countries.
App Store is a service mark of Apple Inc.

Google, Android, Google Play, and other related marks and logos are trademarks of Google LLC.

Amazon, Alexa and all related logos are trademarks of Amazon.com, Inc. or its affiliates.

LDAC and LDAC logo are trademarks of Sony Corporation.



Other system names and product names appearing in this document are in general the registered trademarks or trademarks of the respective developer companies.
Note that the ™ mark and ® mark do not appear in this document.

This product incorporates the open source software other than the software licensed under the GPL V2.0 and/or LGPL V2.1. The software categorized as above are distributed in the hope that it will be useful, but WITHOUT ANY WARRANTY, without even the implied warranty of MERCHANTABILITY or FITNESS FOR A PARTICULAR PURPOSE. Please refer to the detailed terms and conditions thereof shown at the following web page.

<https://panasonic.jp/support/global/cs/audio/download/index.html>

This unit complies with the "High Resolution Audio" standard of the Japan Audio Society.

- To enjoy wireless high-resolution quality (sound quality certified by the High-Res Audio Wireless logo), use a playback device with the High-Res Audio Wireless logo and set the Bluetooth® sound quality setting to sound quality priority mode / LDAC 990 kbps.
- In modes other than the above (connection priority mode, etc.), playback may not be possible with high resolution quality.

Troubleshooting

Before requesting service, make the following checks. If you are in doubt about some of the check points, or if the remedies indicated in the chart do not solve the problem, refer to “Customer Services Directory” on “Safety Instructions” if you reside in the U.S.A., or refer to “CONTACT INFORMATION” on “Safety Instructions” if you reside in Canada, or consult your dealer for instructions.

Sound and audio volume

No sound.

- Make sure that the unit and the Bluetooth® device are connected correctly. (→ 13)
- Check if music is playing on the Bluetooth® device.
- Make sure that the unit is turned on and the volume is not set too low.
- Pair and connect the Bluetooth® device and the unit again. (→ 13)
- Check if the Bluetooth® compatible device supports “A2DP” profile. For details on profiles, see “Listening to music” (→ 15). Also refer to the operating manual for the Bluetooth® compatible device.

Low volume.

- Increase the volume of the unit. (→ 16)
- Increase the volume on the Bluetooth® device.

Sound from the device is cut off. / Too much noise. / Sound quality is bad.

- Sound may be disrupted if signals are blocked. Do not fully cover this unit with the palm of your hand, etc.
- The device may be out of the 10 m (33 ft) communication range. Move the device closer to this unit.
- Remove any obstacle between this unit and the device.
- Switch off any wireless LAN device when not in use.

Bluetooth® device connection

The device cannot be connected.

- You can pair a maximum of 10 Bluetooth® devices with this unit. When you pair a device after the maximum has been exceeded, previous devices are overwritten. To use overwritten devices again, do the pairing again.
- Delete the pairing information for this unit from the Bluetooth® device, then pair them again. (→ 13)

Phone Calls

You cannot hear the person on the other end of the call.

- Make sure that the unit and the Bluetooth® enabled phone are turned on.
- Check if the unit and the Bluetooth® enabled phone are connected. (→ 13)
- If the volume of the other person's voice is too low, increase the volume of both the unit and the Bluetooth® enabled phone.

Cannot make a phone call.

- Check if the Bluetooth® compatible device supports "HSP" or "HFP" profile. For details on profiles, see "Listening to music" (→ 15) and "Making a phone call" (→ 17). Also refer to the operating manual for the Bluetooth® enabled phone.
- Check the audio settings on the Bluetooth® compatible telephone, and if the setting does not allow communication with this unit, change the setting. (→ 13)

General

The unit does not respond.

- This unit can be reset when all operations are rejected. To reset the unit, press and hold [⏻/I] for 10 seconds or more. (→ 21)

Amazon Alexa is not responding.

- Make sure that the Amazon Alexa app is activated.
- Make sure that the voice assistant is set to Amazon Alexa.
- Make sure that data communication is enabled on the mobile device.
- Make sure that the device is paired with the Amazon Alexa app.

Power supply and charging

Cannot charge the unit. / The LED indicator does not light during charging. / Charging takes longer.

- Is the USB charging cord connected firmly to the USB terminal of the AC adaptor? (→ 10)
- Make sure to charge in a room temperature between 10 °C and 35 °C (50 °F to 95 °F).
- Make sure the computer is turned on and is not on standby or sleep mode.
- Is the USB port you are currently using working properly? If your AC adaptor has other USB ports, unplug the connector from its current port and plug it into one of the other ports.
- If the measures mentioned above are not applicable, unplug the USB charging cord and plug it in again.
- It takes approx. 3 hours to charge the battery from empty to full.
- If the charge time and operating time become shortened, the battery may have run down. (Number of charging times of the installed battery: Approximately 500)
- The LED indicator lights in red when charging is in progress. When charging is completed, the LED indicator will go out.

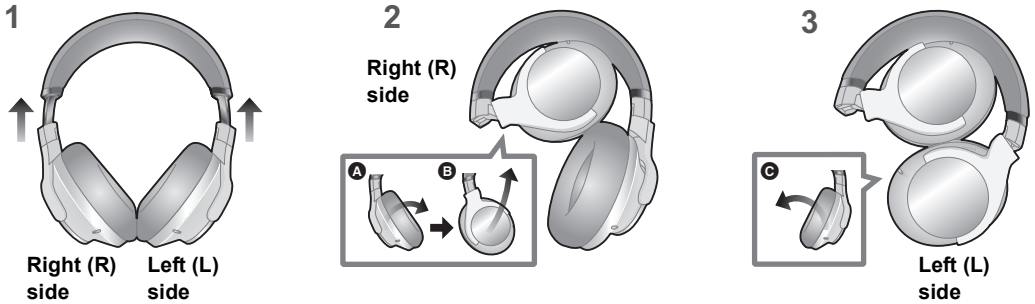
The power does not turn on. / The power turns off.

- Is the unit being charged? The power cannot be turned ON during charging. (→ 10)
- The battery is low when the LED indicator is blinking in red. Charge the unit.

Storage of the unit

Fold the unit as shown below when storing it in the carrying case.

- If the USB charging cord or the detachable cord (supplied) is connected, disconnect it from the unit.
- Do not rotate the housing forcibly over the rotation limit.



- 1** Store the sliders.
- 2** Rotate the housing on either side by approx. 90° (A) to fold it toward the headband side (B).
- 3** Rotate the other housing by approx. 90° (C).
- 4** Store the unit in the carrying case.

Specifications

■ General

Power supply	DC 5 V, 1200 mA
Built-in battery	3.7 V, Lithium polymer
Operating time ^{*1}	Approx. 50 hours (Noise cancelling: ON, AAC) Approx. 60 hours (Noise cancelling: OFF, AAC) Approx. 50 hours (Noise cancelling: ON, SBC) Approx. 60 hours (Noise cancelling: OFF, SBC) Approx. 40 hours (Noise cancelling: ON, LDAC) Approx. 50 hours (Noise cancelling: OFF, LDAC)
Call time ^{*1}	Approx. 30 hours (Noise cancelling: ON)
Waiting Time ^{*1}	Approx. 60 hours (Noise cancelling: ON, Auto power off does not work) Approx. 120 hours (Noise cancelling: OFF, Auto power off does not work)
Quick charge Operating time ^{*1}	15 min. charge, 10 hours playback (Noise cancelling: ON, AAC)
Charging time ^{*2} (25 °C (77 °F))	Approx. 3.0 hours (Using the power source 1200 mA or higher)
Charging temperature range	10 °C to 35 °C (50 °F to 95 °F)
Operating temperature range	0 °C to 40 °C (32 °F to 104 °F)
Operating humidity range	35 %RH to 80 %RH (no condensation)
Mass (Weight)	Approx. 298 g (10.5 oz) (without cord)

*1 It may be shorter depending on the operating conditions.

*2 The time required to charge the battery from empty to full.

■ Bluetooth® section

Bluetooth® system specification	Ver. 5.2
Wireless equipment classification	Class 1
Max RF Power	8 dBm
Frequency band	2402 MHz to 2480 MHz
Supported profiles	A2DP, AVRCP, HSP, HFP
Supported codec	SBC, AAC, LDAC

■ Headphone section

Driver units	40 mm (1 ⁹ / ₁₆ in)
Impedance	34 Ω
Frequency response ^{*3}	4 Hz to 40 kHz
Microphone	Monaural, MEMS Mic
Charging terminal	USB Type-C Shape

^{*3} When the power is ON

■ Accessory section

USB charging cord (Input Plug: USB Type-A Shape, Output Plug: USB Type-C Shape)	Approx. 0.5 m (1.6 ft)
Detachable cord	Approx. 1.0 m (3.3 ft)

• Specifications are subject to change without notice.

To remove the battery when disposing of this unit

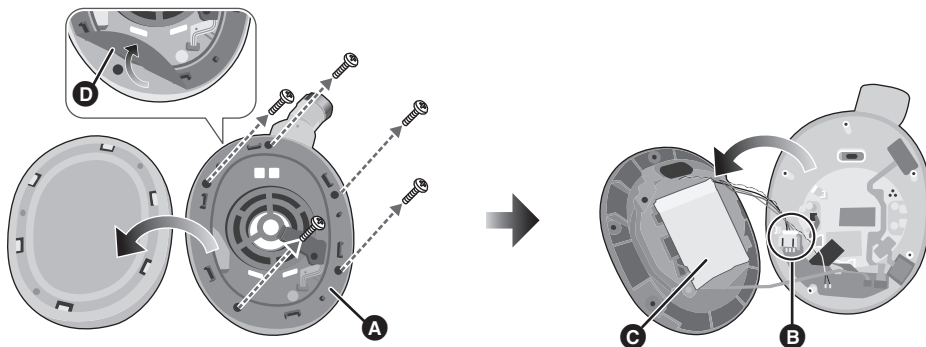
The following instructions are not intended for repairing purposes but for the disposal of this unit. This unit is not restorable once disassembled.

• When disposing of this unit, take out the battery installed in this unit and recycle it.

- Disassemble after the battery runs out.
- Keep disassembled parts out of reach of children.

Regarding the handling of used battery

- Insulate the terminals with adhesive tape or similar material.
- Do not disassemble.



- 1 Remove the left ear pad.
- 2 Remove the sealing sponges (D) and remove the 5 screws.
- 3 Remove the part A in step 2.
- 4 Disconnect the connector (B), and peel off the tape fixing the battery in place, remove the battery (C).

Declaration of Conformity (DoC)

Hereby, "*Panasonic Corporation*" declares that this product is in compliance with the essential requirements and other relevant provisions of Directive 2014/53/EU.

Customers can download a copy of the original DoC to our RE products from our DoC server:

<http://www.ptc.panasonic.eu>

Contact to Authorised Representative:

Panasonic Marketing Europe GmbH,

Panasonic Testing Centre, Winsbergring 15, 22525 Hamburg, Germany

Type of wireless	Frequency band	Maximum power (dBm e.i.r.p)
Bluetooth®	2402 - 2480 MHz	14 dBm

Declaration of Conformity for Radio Equipment in UK

Panasonic Corporation declares that the radio equipment type (Model Numbers are referred in the Operating Instructions) is in compliance with The Radio Equipment Regulations 2017. The full text of the UK declaration of conformity is available at the following internet address:

<https://www.ptc.panasonic.eu/compliance-documents>

Contact in the UK : Panasonic Testing Centre on behalf of Panasonic UK,
a branch of Panasonic Marketing Europe GmbH (Importer),
Maxis 2, Western Road, Bracknell, Berkshire, RG12 1RT

Disposal of Old Equipment and Batteries**Only for European Union and countries with recycling systems**

These symbols on the products, packaging, and/or accompanying documents mean that used electrical and electronic products and batteries must not be mixed with general household waste. For proper treatment, recovery and recycling of old products and used batteries, please take them to applicable collection points in accordance with your national legislation.

By disposing of them correctly, you will help to save valuable resources and prevent any potential negative effects on human health and the environment.

For more information about collection and recycling, please contact your local authority.

Penalties may be applicable for incorrect disposal of this waste, in accordance with national legislation.

**(Note for the battery symbol (bottom symbol)):**

This symbol might be used in combination with a chemical symbol. In this case it complies with the requirement set by the Directive for the chemical involved.

Useful information (Only for Latin American countries)

Customer Service

Customer Service Directory

Obtain products information and operative assistant; localize the closer distributor or Service Center; buy spare parts and accessories by our Web Site to Latin America or calling our Contact Center:

COUNTRY	WEB SITE	CONTACT CENTER
Panama	www.panasonic.com/pa/soporte/	800-7262
Colombia	www.panasonic.com/co/soporte/	01-8000-947262
Ecuador	www.panasonic.com/pa/soporte/	1-800-726276
Costa Rica	www.panasonic.com/pa/soporte/	800-7262737
El Salvador	www.panasonic.com/pa/soporte/	800-7262
Guatemala	www.panasonic.com/pa/soporte/	1-801-811-7262
Uruguay	www.panasonic.com/pa/soporte/	0-800-7262
Paraguay	www.panasonic.com/pa/soporte/	Web Site
Chile	www.panasonic.com/cl/soporte/	800-390-602 022-797-5000
Peru	www.panasonic.com/pe/soporte/	0800-00726
Venezuela	www.panasonic.com/pa/soporte/	Web Site
Mexico	www.panasonic.com/mx/soporte/	800-847-7262 55-5000-1200
Argentina		0800-333-7262 0810-321-7262
Dominican Rep.	www.panasonic.com/pa/soporte/	809-200-8000

For Caribbean countries that speak English please enter this web site in order to find information of our products and operative assistant:
www.panasonic.com/caribbean

For the United Kingdom and Ireland customers

Sales and Support Information

Customer Communications Centre

- For customers within the UK: 0333 222 8777
- For customers within Ireland: 01 447 5229
- Monday–Friday 9:00 am–5:00 pm (Excluding public holidays).
- For further support on your product, please visit our website:
www.technics.com/uk/

**UK
CA**

Importer for UK:

Panasonic UK, a branch of Panasonic Marketing Europe GmbH, Maxis 2,
Western Road, Bracknell, Berkshire, RG12 1RT



Manufactured by:

Panasonic Corporation
Kadoma, Osaka, Japan

Authorized Representative in Europe:

Panasonic Marketing Europe GmbH
Panasonic Testing Centre
Winsbergring 15, 22525 Hamburg, Germany



Panasonic Corporation of North America
Two Riverfront Plaza, Newark, NJ 07102-5490
<http://shop.panasonic.com>

Panasonic Canada Inc.
5770 Ambler Drive, Mississauga, Ontario L4W 2T3
www.panasonic.com

© Panasonic Corporation 2021

Panasonic Corporation
<http://www.panasonic.com>



PNQP1554YA
F1221MH1012

Technics®



EAH-A800

Digital Wireless Stereo Headphones

Casque d'écoute stéréo sans fil numérique

Cascos auriculares estéreo inalámbricos digitales

Casque d'écoute stéréo sans fil numérique

Digitale drahtlose Stereo-Kopfhörer

Auscultadores estéreo sem fios digitais

Cuffie stereo senza fili digitali

Bezprzewodowe cyfrowe słuchawki nagłowne stereo

Digitální bezdrátová stereofonní sluchátka

Digitálne bezdrôtové stereo slúchadlá

Digitális vezeték nélküli sztereó fejhallgató

Căști stereo digitale cu fixare pe cap, wireless

Skaitmeninės belaidės dedamos ant ausų stereo ausinės

Цифрови безжични стерео слушалки

Digitaalsed traadita kõrvapealsed stereokõrvaklapid

Digitalne bežične stereo naglavne slušalice

Digitalne brezžične stereo naglavne slušalke

Digitala trådlösa stereohörlurar

Digital trådløse stereo hovedtelefoner

Digitaaliset langattomat stereokuulokkeet

Digitale trådløse stereohodetelefoner

Safety Instructions

Mesures de sécurité

Instrucciones de seguridad

Consignes de sécurité

Sicherheitshinweise

Instruções de segurança

Istruzioni di sicurezza

Zasady bezpieczeństwa

Bezpečnostní pokyny

Bezpečnostné pokyny

Biztonsági előírások

Instrucțiuni de siguranță

Saugos instrukcijos

Инструкции за безопасност

Turvajuhend

Sigurnosne upute

Varnostna navodila

Säkerhetsanvisningar

Sikkerhedsanvisninger

Turvaohjeita

Sikkerhetsinstruksjoner



<https://www.technics.com/support/downloads/oi/EAH-A800.html>

English

More detailed operating instructions are available in "Owner's Manual (PDF format)".

To read it, download it from the website.

- Click the desired language.

Français (Canada)

Un mode d'emploi plus détaillé est disponible dans "Manuel d'utilisation (format PDF)".

Pour le lire, le télécharger depuis le site Web.

- Cliquer sur la langue souhaitée.

Español

Puede encontrar instrucciones de funcionamiento más detalladas en las "Instrucciones de funcionamiento (formato PDF)".

Para leerlas, descárguelas del sitio web.

- Haga clic en el idioma deseado.

Français (Europe)

Des instructions plus détaillées sont disponibles dans le "Mode d'emploi (format PDF)".

Pour en prendre connaissance, téléchargez-le depuis le site Web.

- Cliquez sur la langue désirée.

Deutsch

Eine detailliertere Bedienungsanleitung steht unter "Bedienungsanleitung (PDF-Format)" zur Verfügung.

Laden Sie sie zum Lesen von der folgenden Website herunter.

- Klicken Sie auf die gewünschte Sprache.

Português

Poderá encontrar instruções de funcionamento mais detalhadas em "Instruções de Funcionamento (formato PDF)".

Para as ler, descarregue-as a partir do website.

- Clique na língua desejada.

Italiano

Informazioni per l'uso più dettagliate sono disponibili nel documento "Istruzioni per l'uso (formato PDF)".

Per leggerlo, scaricarlo dal sito web.

- Cliccare sulla lingua desiderata.

Polski

Bardziej szczegółowe instrukcje dostępne są w "Instrukcja obsługi (format PDF)".

Aby z niej skorzystać, pobierz ją ze strony.

- Kliknij żądany język.

Česky

Podrobnější pokyny k obsluze naleznete v "Návod k obsluze (ve formátu PDF)".

Návod si můžete stáhnout z webu.

- Klikněte na požadovaný jazyk.

Slovensky

Podrobnejší návod na obsluhu je k dispozícii v "Návode na obsluhu (formát PDF)".

Prečítať si ich môžete po prevzatí z webových stránok.

- Kliknite na požadovaný jazyk.

Magyar

Részletesebb használati útmutatót a "Felhasználói kézikönyv (PDF formátum)" tartalmaz.

Elovasásához töltsse le azt a weboldalról.

- Kattintson a kívánt nyelvre.

Română

Mai multe informații detaliate sunt disponibile în "Instrucțiuni de operare (format PDF)".

Pentru a le citi, descărcați-le de pe site-ul web.

- Faceți clic pe limba dorită.

Lietuviškai

Išsamesnės naudojimo instrukcijos pateiktos skyriuje

"Naudojimo instrukcija (PDF formata)".

Norėdami ją perskaityti, atsisiųskite ji iš internetinės svetainės.

- Spustelėkite norimą kalbą.

Български

По-подробни инструкции за експлоатация ще намерите в "Ръководството с инструкции за експлоатация (PDF формат)".

За да го прочетете, сваляте го от интернет страницата.

- Щракнете върху желаня език.

Eesti keel

Üksikasjalikumad kasutusjuhised on saadaval failis

"Kasutusjuhend (PDF-formaat)".

Selle lugemiseks laadige see veebisaidilt alla.

- Klõpsake soovitud keelele.

Hrvatski

Detaljnije upute za rukovanje dostupne su u "Uputama za rukovanje (PDF format)".

Preuzmite ih s web-mjesta kako biste ih pročitali.

- Odaberite željeni jezik.

Slovenščina

Podrobnejša navodila za uporabo so na voljo v "Navodila za uporabo (format PDF)".

Če jih želite prebrati, si jih lahko prenesete s spletne strani.

- Kliknite na želeni jezik.

Svenska

Mer detaljerade bruksanvisningar finns i "Bruksanvisning (PDF-format)".

Du kan läsa den genom att ladda ned den från webbplatsen.

- Klicka på önskat språk.

Dansk

En mere detaljeret betjeningsvejledning findes i

"Betjeningsvejledning (PDF-format)".

Den kan downloades fra.

- Klik på det ønskede sprog

Suomi

Yksityiskohtaisemmat käyttöohjeet löytyvät kohdasta

"Käyttöohjeet (PDF-muodossa)".

Niiden lukemiseksi lataa tiedosto verkkosivulta.

- Napsauta haluttua kieltä.

Norsk

Mer detaljerte driftsinstruksjoner finnes i "Driftsinstruksjoner (PDF-format)".

For å lese dem må du laste dem ned fra nettsiden.

- Klikk på ønsket språk.

Expressions used in this document

- The product illustrations may differ from the actual product.

**Register online at <http://shop.panasonic.com/support>
(U.S. customers only)**

If you have any questions, visit:

In the U.S.A.:

<http://shop.panasonic.com/support>

In Canada:

www.panasonic.ca/english/support



For US and Canada only
Pour les É.-U. et le Canada seulement

A lithium ion battery that is recyclable powers the product you have purchased. Please call 1-800-8-BATTERY for information on how to recycle this battery.



Intertek

4004466

Conforms to

UL STD 62368-1.

Certified to CAN/CSA STD

C22.2 No.62368-1.

Accessories

Please check and identify the supplied accessories.

To order accessories, contact the dealer from whom you have made your purchase.

1 x Carrying case

1 x USB charging cord

1 x Detachable cord

1 x Airplane adaptor

Only for U.S.A.:

To order accessories, refer to "Limited Warranty".

Maintenance

Clean this unit with a dry and soft cloth.

- Do not use solvents including benzene, thinner, alcohol, kitchen detergent, a chemical wiper, etc. This might cause the exterior case to be deformed or the coating to come off.

About Bluetooth®**Restrictions of use**

- Wireless transmission and/or usage with all Bluetooth® equipped devices is not guaranteed.
- Depending on the specifications and settings of a device, it can fail to connect or some operations can be different.

IMPORTANT SAFETY INSTRUCTIONS

Read these operating instructions carefully before using the unit. Follow the safety instructions on the unit and the applicable safety instructions listed below. Keep these operating instructions handy for future reference.

- 1 Do not use this apparatus near water.
- 2 Protect the power cord from being walked on or pinched particularly at plugs, convenience receptacles, and the point where they exit from the apparatus.
- 3 Unplug this apparatus during lightning storms or when unused for long periods of time.
- 4 Refer all servicing to qualified service personnel. Servicing is required when the apparatus has been damaged in any way, such as power-supply cord or plug is damaged, liquid has been spilled or objects have fallen into the apparatus, the apparatus has been exposed to rain or moisture, does not operate normally, or has been dropped.
- 5 Clean only with dry cloth.

Safety precautions**THE FOLLOWING APPLIES ONLY IN THE U.S.A. AND CANADA.**

This device complies with Part 15 of FCC Rules and Innovation, Science and Economic Development Canada's licence-exempt RSS(s). Operation is subject to the following two conditions:

- (1) this device may not cause interference, and
- (2) this device must accept any interference, including interference that may cause undesired operation.

FCC ID: ACJ-EAH-A800

Model: EAH-A800

IC: 216A-EAHA800

This transmitter must not be co-located or operated in conjunction with any other antenna or transmitter.

(For the U.S.A. only)

This equipment complies with FCC radiation exposure limits set forth for an uncontrolled environment and meets the FCC radio frequency (RF) Exposure Guidelines as this equipment has very low levels of RF energy.

(For Canada only)

EAH-A800 has been tested and found to comply with ICES radiation exposure limits set forth for an uncontrolled environment and meets RSS-102 of the ICES radio frequency (RF) Exposure rules.

THE FOLLOWING APPLIES ONLY IN THE U.S.A.

FCC Note:

This equipment has been tested and found to comply with the limits for a Class B digital device, pursuant to Part 15 of the FCC Rules. These limits are designed to provide reasonable protection against harmful interference in a residential installation. This equipment generates, uses, and can radiate radio frequency energy and, if not installed and used in accordance with the instructions, may cause harmful interference to radio communications.

However, there is no guarantee that interference will not occur in a particular installation. If this equipment does cause harmful interference to radio or television reception, which can be determined by turning the equipment off and on, the user is encouraged to try to correct the interference by one or more of the following measures:

- Reorient or relocate the receiving antenna.
- Increase the separation between the equipment and receiver.
- Connect the equipment into an outlet on a circuit different from that to which the receiver is connected.
- Consult the dealer or an experienced radio/TV technician for help.

FCC Caution:

Any unauthorized changes or modifications to this equipment would void the user's authority to operate this device.

This device complies with Part 15 of the FCC Rules. Operation is subject to the following two conditions: (1) This device may not cause harmful interference, and (2) this device must accept any interference received, including interference that may cause undesired operation.

Supplier's Declaration of Conformity

Trade Name: Technics

Model No.: EAH-A800

Responsible Party: Panasonic Corporation of North America
Two Riverfront Plaza, Newark,
NJ 07102-5490

Support Contact: <http://shop.panasonic.com/support>

THE FOLLOWING APPLIES ONLY IN CANADA.

CAN ICES-3(B)/NMB-3(B)

■ Unit

WARNING:

To reduce the risk of fire, electric shock or product damage,

- Do not expose this unit to rain, moisture, dripping or splashing.
- Do not expose units containing batteries to excessive heat (e.g., from storage in direct sunlight, fire or the like).
- Use only manufacturer's recommended accessories.
- Do not disassemble the product.
- Do not repair this unit by yourself. Refer servicing to qualified service personnel.

Avoid the use in the following conditions

- High or low extreme temperatures during use, storage or transportation.
- Disposal of a battery into fire or a hot oven, or mechanically crushing or cutting of a battery, that can result in an explosion.
- Extremely high temperature and/or extremely low air pressure that can result in an explosion or the leakage of flammable liquid or gas.

- Do not place this unit near a heat source.
- Do not listen with this unit at high volume in places where you need to hear sounds from the surrounding environment for safety, such as at railroad crossings, and construction sites.

- Keep this unit away from something susceptible to the magnetism. Such devices as a clock may not operate correctly.
- When using this unit in an airplane, heed the instructions given by the airline company. Some airlines may forbid your using the unit. For further details, contact the airline you will be flying with.
- Do not wear the headphones while charging.
- Contains small parts which may be a choking hazard. Not suitable for children under age 3.
- This product contains magnetic material. Consult your physician on whether this might affect your implantable medical device.
- Keep the airplane adaptor out of reach of children to prevent swallowing.
- Proper charging is not possible if there is dust or droplets of water on the charging terminal of the headphones. Remove the dust or water droplets before charging.
- Be aware that this unit may get warm while charging or immediately after charging. Depending on your constitution and health status, putting the headphones on may trigger adverse reactions such as skin redness, itching, and rash if the headphones have just been disconnected from the power source and are still warm.
- Do not use any other USB charging cords except the supplied one.
- Do not use any other detachable cords except the supplied one.

■ Battery

- Do not heat or expose to flame.
- Do not leave the battery in a car exposed to direct sunlight for a long period of time with doors and windows closed.
- Battery mishandling can cause electrolyte leakage which can damage items the leaked fluid comes into contact with. If electrolyte leaks from the battery, consult your dealer. Wash thoroughly with water if electrolyte comes in contact with any part of your body.
- When disposing of the battery, please contact your local authorities or dealer and ask for the correct method of disposal.

■ Allergies

- Discontinue use if you experience discomfort with the ear pads or any other parts that directly contact your skin.
- Continued use may cause rashes or other allergic reactions.

■ Precautions for listening with the Headphones

- Excessive sound pressure from earphones and headphones can cause hearing loss.
- Do not use your headphones at a high volume. Hearing experts advise against continuous extended play.
- If you experience a ringing in your ears, reduce volume or discontinue use.
- Do not use while operating a motorised vehicle. It may create a traffic hazard and is illegal in many areas.
- You should use extreme caution or temporarily discontinue use in potentially hazardous situations.
- Do not use the headphones if they emit any loud unusual noise. If this happens, turn the headphones off and contact customer service.
- Remove headphones immediately if you experience a warming sensation or loss of audio.
- The headphones do not play audio while charging.

This unit may receive radio interference caused by mobile telephones during use. If such interference occurs, please increase separation between this unit and the mobile telephone.

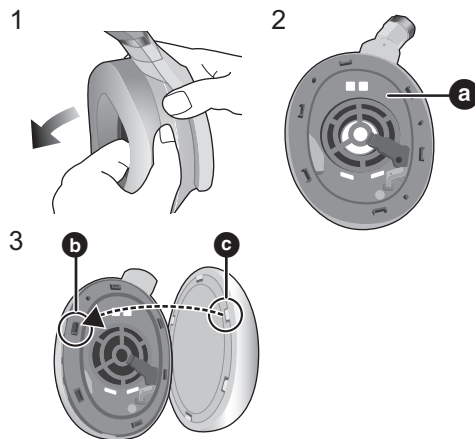
Use only the supplied USB charging cord when connecting to a computer.

The symbols on this product (including the accessories) represent the following:

=== : DC
 ⏻ : Standby
 I : ON

- 1 Remove the left ear pad to view certification information.
- 2 Certification information (a) is indicated on the speaker plate portion, which becomes visible when the left ear pad (L side) is removed.
- 3 To attach the ear pad, insert the clips (b) into the matching parts (c) on the ear pad. (There are 6 clips)

If you pull the ear pad too much, the ear pad can tear.



The Bluetooth® word mark and logos are registered trademarks owned by Bluetooth SIG, Inc. and any use of such marks by Panasonic Corporation is under license. Other trademarks and trade names are those of their respective owners.

LDAC and LDAC logo are trademarks of Sony Corporation.

QR Code is a registered trademark of DENSO WAVE INCORPORATED.

Other system names and product names appearing in this document are in general the registered trademarks or trademarks of the respective developer companies. Note that the ™ mark and ® mark do not appear in this document.

This product incorporates the open source software other than the software licensed under the GPL V2.0 and/or LGPL V2.1. The software categorized as above are distributed in the hope that it will be useful, but WITHOUT ANY WARRANTY, without even the implied warranty of MERCHANTABILITY or FITNESS FOR A PARTICULAR PURPOSE. Please refer to the detailed terms and conditions thereof shown at the following web page.

<https://panasonic.jp/support/global/cs/audio/download/index.html>

This unit complies with the "High Resolution Audio" standard of the Japan Audio Association.

- To enjoy wireless high-resolution quality (sound quality certified by the high-resolution wireless logo), use a playback device with the high-resolution wireless logo and set the Bluetooth® sound quality setting to sound quality priority mode / LDAC 990 kbps.
- In modes other than the above (connection priority mode, etc.), playback may not be possible with high resolution quality.

Specifications

■ General

Power supply	DC 5 V, 1200 mA
Built-in battery	3.7 V, Lithium polymer
Operating time ^{*1}	Approx. 50 hours (Noise cancelling: ON, AAC) Approx. 50 hours (Noise cancelling: ON, SBC) Approx. 40 hours (Noise cancelling: ON, LDAC)
Charging time ^{*2} (25 °C (77 °F))	Approx. 3.0 hours
Charging temperature range	10 °C to 35 °C (50 °F to 95 °F)
Operating temperature range	0 °C to 40 °C (32 °F to 104 °F)
Operating humidity range	35 %RH to 80 %RH (no condensation)
Mass (Weight)	Approx. 298 g (10.5 oz) (without cord)

■ Bluetooth® section

Frequency band	2402 MHz to 2480 MHz
Supported profiles	A2DP, AVRCP, HSP, HFP
Supported codec	SBC, AAC, LDAC

■ Headphone section

Impedance	34 Ω
Charging terminal	USB Type-C Shape

^{*1} It may be shorter depending on the operating conditions.

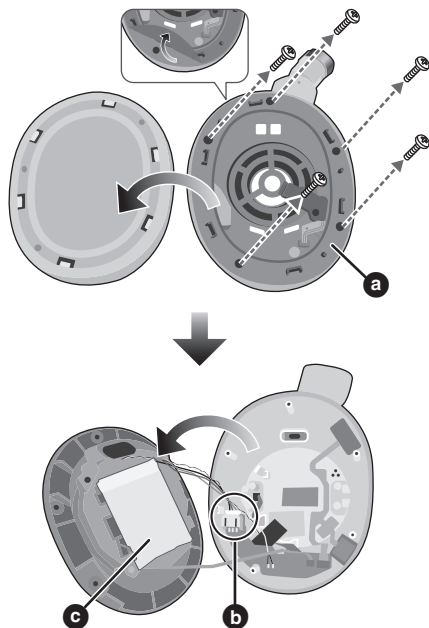
^{*2} The time required to charge the battery from empty to full.

- Specifications are subject to change without notice.

To remove the battery when disposing of this unit

The following instructions are not intended for repairing purposes but for the disposal of this unit. This unit is not restorable once disassembled.

- When disposing of this unit, take out the battery installed in this unit and recycle it.



- 1 Remove the left ear pad.
- 2 Remove the sealing sponges and remove the 5 screws.
- 3 Remove the part **a** in step 2.
- 4 Disconnect the connector **b**, and peel off the tape fixing the battery in place, remove the battery **c**.



Only for European Union and countries with recycling systems

These symbols indicate separate collection of waste electrical and electronic equipment or waste batteries.

More detailed information is contained in "Owner's Manual (PDF format)".

Declaration of Conformity (DoC)

Hereby, "Panasonic Corporation" declares that this product is in compliance with the essential requirements and other relevant provisions of Directive 2014/53/EU.

Customers can download a copy of the original DoC to our RE products from our DoC server:

<http://www.ptc.panasonic.eu>

Contact to Authorized Representative:
Panasonic Marketing Europe GmbH,
Panasonic Testing Centre, Winsbergring 15, 22525
Hamburg, Germany

Type of wireless	Frequency band	Maximum power (dBm e.i.r.p)
Bluetooth®	2402 - 2480 MHz	14 dBm

Declaration of Conformity for Radio Equipment in UK

Panasonic Corporation declares that the radio equipment type (Model Numbers are referred in the Operating Instructions) is in compliance with The Radio Equipment Regulations 2017. The full text of the UK declaration of conformity is available at the following internet address: <https://www.ptc.panasonic.eu/compliance-documents>
Contact in the UK : Panasonic Testing Centre on behalf of Panasonic UK,
a branch of Panasonic Marketing Europe GmbH (Importer),
Maxis 2, Western Road, Bracknell, Berkshire, RG12 1RT

Français (Canada)

Expressions utilisées dans ce document

- Les illustrations du produit peuvent différer du produit réel.

Pour toute assistance supplémentaire, visiter :
www.panasonic.ca/french/support



For US and Canada only
Pour les É.-U. et le Canada seulement

L'appareil que vous vous êtes procuré est alimenté par une batterie au lithium-ion. Pour des renseignements sur le recyclage de la batterie, veuillez composer le 1-800-8-BATTERY.

Accessoires

Vérifier et identifier les accessoires fournis.

Pour commander des accessoires, communiquer avec le revendeur.

- 1 x boîtier de transport
- 1 x cordon de charge USB
- 1 x cordon détachable
- 1 x adaptateur pour avion

Entretien

Nettoyer cet appareil avec un chiffon doux et sec.

- Ne pas utiliser de solvants, comme la benzine, du diluant, de l'alcool, des détergents de cuisine, etc. Cela pourrait modifier l'apparence du boîtier externe ou décoller son revêtement.

Limited Warranty (ONLY FOR U.S.A.)

Technics Products Limited Warranty

Limited Warranty (ONLY FOR CANADA)

Panasonic Canada Inc.

5770 Ambler Drive, Mississauga, Ontario L4W 2T3

Technics PRODUCT – LIMITED WARRANTY EXCHANGE PROGRAM

Panasonic Canada Inc. warrants this product to be free from defects in material and workmanship under normal use and for a period as stated below from the date of original purchase agrees to, at its option either (a) repair your product with new or refurbished parts, (b) replace it with a new or a refurbished equivalent value product, or (c) refund your purchase price. The decision to repair, replace or refund will be made by Panasonic Canada Inc.

Accessories	One (1) year
-------------	--------------

This warranty is given only to the original purchaser, or the person for whom it was purchased as a gift, of a Technics brand product mentioned above sold by an authorized Panasonic dealer in Canada and purchased and used in Canada, which product was not sold "as is", and which product was delivered to you in new condition in the original packaging.

IN ORDER TO BE ELIGIBLE TO RECEIVE WARRANTY SERVICE HEREUNDER, A PURCHASE RECEIPT OR OTHER PROOF OF DATE OF ORIGINAL PURCHASE, SHOWING AMOUNT PAID AND PLACE OF PURCHASE IS REQUIRED

LIMITATIONS AND EXCLUSIONS

This warranty ONLY COVERS failures due to defects in materials or workmanship, and DOES NOT COVER normal wear and tear or cosmetic damage. The warranty ALSO DOES NOT COVER damages which occurred in shipment, or failures which are caused by products not supplied by Panasonic Canada Inc., or failures which result from accidents, misuse, abuse, neglect, mishandling, misapplication, alteration, faulty installation, set-up adjustments, misadjustment of consumer controls, improper maintenance, power line surge, lightning damage, modification, introduction of sand, humidity or liquids, commercial use such as hotel, office, restaurant, or other business or rental use of the product, or service by anyone other than a Authorized Service Center, or damage that is attributable to acts of God.

Dry cell batteries are also excluded from coverage under this warranty.

THIS EXPRESS, LIMITED WARRANTY IS IN LIEU OF ALL OTHER WARRANTIES, EXPRESS OR IMPLIED, INCLUDING ANY IMPLIED WARRANTIES OF MERCHANTABILITY AND FITNESS FOR A PARTICULAR PURPOSE. IN NO EVENT WILL PANASONIC CANADA INC. BE LIABLE FOR ANY SPECIAL, INDIRECT OR CONSEQUENTIAL DAMAGES RESULTING FROM THE USE OF THIS PRODUCT OR ARISING OUT OF ANY BREACH OF ANY EXPRESS OR IMPLIED WARRANTY. (As examples, this warranty excludes damages for lost time, travel to and from the Authorized Service Center, loss of or damage to media or images, data or other memory or recorded content. This list of items is not exhaustive, but for illustration only.)

In certain instances, some jurisdictions do not allow the exclusion or limitation of incidental or consequential damages, or the exclusion of implied warranties, so the above limitations and exclusions may not be applicable. This warranty gives you specific legal rights and you may have other rights which vary depending on your province or territory.

CONTACT INFORMATION

For product operation and information assistance, please visit our Support page:
www.panasonic.ca/english/support

For defective product exchange within the warranty period, please contact the original dealer.

The serial number of this product can be found on the left side of the headphones.

Remove the left ear pad to see it.

Please note them in the space provided below and keep for future reference.

MODEL NUMBER EAH-A800

SERIAL NUMBER _____

User memo:

DATE OF PURCHASE _____

DEALER NAME _____

DEALER ADDRESS _____

TELEPHONE NUMBER _____

Limited Warranty Coverage

If your product does not work properly because of a defect in materials or workmanship, Panasonic Corporation of North America (referred to as "the warrantor") will, for the length of the period indicated on the chart below, which starts with the date of original purchase ("warranty period"), at its option either (a) repair your product with new or refurbished parts, (b) replace it with a new or a refurbished equivalent value product, or (c) refund your purchase price. The decision to repair, replace or refund will be made by the warrantor.

Product or Part Name	Parts	Labor
Headphones/ Earphones/Headset	1 year	Not Applicable
All included Accessories	90 days	Not Applicable

During the "Labor" warranty period there will be no charge for labor. During the "Parts" warranty period, there will be no charge for parts. This Limited Warranty excludes both parts and labor for non-rechargeable batteries, antennas, and cosmetic parts (cabinet). This warranty only applies to products purchased and serviced in the United States. This warranty is extended only to the original purchaser of a new product which was not sold "as is".

Mail-In Service—Online Repair Request

Online Repair Request

To submit a new repair request and for quick repair status visit our Web Site at <http://shop.panasonic.com/support>

When shipping the unit, carefully pack, include all supplied accessories listed in the Owner's Manual, and send it prepaid, adequately insured and packed well in a carton box. When shipping Lithium Ion batteries please visit our Web Site at

<http://shop.panasonic.com/support> as Panasonic is committed to providing the most up to date information. Include a letter detailing the complaint, a return address and provide a daytime phone number where you can be reached. A valid registered receipt is required under the Limited Warranty.

IF REPAIR IS NEEDED DURING THE WARRANTY PERIOD, THE PURCHASER WILL BE REQUIRED TO FURNISH A SALES RECEIPT/PROOF OF PURCHASE INDICATING DATE OF PURCHASE, AMOUNT PAID AND PLACE OF PURCHASE. CUSTOMER WILL BE CHARGED FOR THE REPAIR OF ANY UNIT RECEIVED WITHOUT SUCH PROOF OF PURCHASE.

Limited Warranty Limits and Exclusions

This warranty ONLY COVERS failures due to defects in materials or workmanship, and DOES NOT COVER normal wear and tear or cosmetic damage. The warranty ALSO DOES NOT COVER damages which occurred in shipment, or failures which are caused by products not supplied by the warrantor, or failures which result from accidents, misuse, abuse, neglect, mishandling, misapplication, alteration, faulty installation, set-up adjustments, misadjustment of consumer controls, improper maintenance, power line surge, lightning damage, modification, introduction of sand, humidity or liquids, commercial use such as hotel, office, restaurant, or other business or rental use of the product, or service by anyone other than a Factory Service Center or other Authorized Service Center, or damage that is attributable to acts of God.

THERE ARE NO EXPRESS WARRANTIES EXCEPT AS LISTED UNDER "LIMITED WARRANTY COVERAGE".

THE WARRANTOR IS NOT LIABLE FOR INCIDENTAL OR CONSEQUENTIAL DAMAGES RESULTING FROM THE USE OF THIS PRODUCT, OR ARISING OUT OF ANY BREACH OF THIS WARRANTY.

(As examples, this excludes damages for lost time, travel to and from the servicer, loss of or damage to media or images, data or other memory or recorded content. The items listed are not exclusive, but for illustration only.)

ALL EXPRESS AND IMPLIED WARRANTIES, INCLUDING THE WARRANTY OF MERCHANTABILITY, ARE LIMITED TO THE PERIOD OF THE LIMITED WARRANTY.

Some states do not allow the exclusion or limitation of incidental or consequential damages, or limitations on how long an implied warranty lasts, so the exclusions may not apply to you.

This warranty gives you specific legal rights and you may also have other rights which vary from state to state. If a problem with this product develops during or after the warranty period, you may contact your dealer or Service Center. If the problem is not handled to your satisfaction, then write to:

Panasonic Corporation of North America
Consumer Affairs Department 8th Fl.
Two Riverfront Plaza
Newark NJ 07102-5490

PARTS AND SERVICE, WHICH ARE NOT COVERED BY THIS LIMITED WARRANTY, ARE YOUR RESPONSIBILITY.

Shop Accessories!

for all your Technics gear

Go to
<http://shop.panasonic.com/support>

Get everything you need to get the most out of
your Technics products

Accessories & Parts for your Camera, Phone, A/V
products, TV, Computers & Networking, Personal
Care, Home Appliances, Headphones, Batteries,
Backup Chargers & more...

Customer Services Directory

For Product Information, Operating Assistance,
Parts, Owner's Manuals, Dealer and Service info
go to <http://shop.panasonic.com/support>

For the hearing or speech impaired TTY: 1- 877-833-8855

**Certificat de garantie limitée
(Pour le Canada seulement)**

Panasonic Canada Inc.

5770, Ambler Drive, Mississauga (Ontario) L4W 2T3

**PRODUIT Technics – GARANTIE LIMITÉE
PROGRAMME DE REMPLACEMENT**

Panasonic Canada Inc. garantit que ce produit est exempt de défauts de matériaux et de main-d'œuvre dans un contexte d'utilisation normale pendant la période indiquée ci-après à compter de la date d'achat original et, dans l'éventualité d'une défectuosité, accepte, à sa discrétion, de (a) réparer le produit avec des pièces neuves ou remises à neuf, (b) remplacer le produit par un produit neuf ou remis à neuf d'une valeur équivalente ou (c) rembourser le prix d'achat. La décision de réparer, remplacer ou rembourser appartient à Panasonic Canada Inc.

Accessoires

Un (1) an

La présente garantie n'est fournie qu'à l'acheteur original d'un des produits de marque Technics indiqués plus haut, ou à la personne l'ayant reçu en cadeau, vendu par un détaillant Panasonic agréé au Canada et utilisé au Canada. Le produit ne doit pas avoir été "vendu tel quel" et doit avoir été livré à l'état neuf dans son emballage d'origine.

POUR ÊTRE ADMISSIBLE AUX SERVICES AU TITRE DE LA PRÉSENTE GARANTIE, LA PRÉSENTATION D'UN REÇU D'ACHAT OU DE TOUTE AUTRE PIÈCE JUSTIFICATIVE DE LA DATE D'ACHAT ORIGINAL, INDIQUANT LE MONTANT PAYÉ ET LE LIEU DE L'ACHAT, EST REQUISE.

RESTRICTIONS ET EXCLUSIONS

La présente garantie COUVRE SEULEMENT les défaillances attribuables à un défaut des matériaux ou à un vice de fabrication et NE COUVRE PAS l'usure normale ni les dommages esthétiques. La présente garantie NE COUVRE PAS NON PLUS les dommages subis pendant le transport, les défaillances causées par des produits non fournis par Panasonic Canada Inc., ni celles résultant d'un accident, d'un usage abusif ou impropre, de négligence, d'une manutention inadéquate, d'une mauvaise application, d'une altération, d'une installation ou de réglages impropres, d'un mauvais réglage des contrôles de l'utilisateur, d'un mauvais entretien, d'une surtension temporaire, de la foudre, d'une modification, de la pénétration de sable, de liquides ou d'humidité, d'une utilisation commerciale (dans un hôtel, un bureau, un restaurant ou tout autre usage par affaires ou en location), d'une réparation effectuée par une entité autre qu'un centre de service Panasonic agréé ou encore d'une catastrophe naturelle.

Les piles sèches sont également exclues de la présente garantie.

CETTE GARANTIE LIMITÉE ET EXPRESSE REMPLACE TOUTE AUTRE GARANTIE, EXPRESSE OU IMPLICITE, INCLUANT LES GARANTIES IMPLICITES DU CARACTÈRE ADEQUAT POUR LA COMMERCIALISATION ET UN USAGE PARTICULIER. PANASONIC CANADA INC. N'AURA D'OBLIGATION EN AUCUNE CIRCONSTANCE POUR TOUT DOMMAGE DIRECT, INDIRECT OU CONSÉCUTIF RESULTANT DE L'UTILISATION DE CE PRODUIT OU DÉCOULANT DE TOUTE DÉROGATION À UNE GARANTIE EXPRESSE OU IMPLICITE. (À titre d'exemples, cette garantie exclut les dommages relatifs à une perte de temps, le transport jusqu'à et depuis un centre de service agréé, la perte ou la détérioration de supports ou d'images, de données ou de tout autre contenu en mémoire ou enregistré. Cette liste n'est pas exhaustive et n'est fournie qu'à des fins explicatives.)

Certaines juridictions ne reconnaissent pas les exclusions ou limitations de dommages indirects ou consécutifs, ou les exclusions de garanties implicites. Dans de tels cas, les limitations stipulées ci-dessus peuvent ne pas être applicables. La présente garantie vous confère des droits précis; vous pourriez aussi avoir d'autres droits pouvant varier selon votre province ou territoire de résidence.

DEMANDE DE RENSEIGNEMENTS

Pour tout renseignement sur les produits et de l'assistance technique, veuillez visiter notre page Soutien :

www.panasonic.ca/french/support

Pour le remplacement d'un produit défectueux couvert par la garantie, veuillez communiquer avec le revendeur d'origine.

Le numéro de série de ce produit peut être trouvé sur le côté gauche du casque.

Retirer le coussinet de gauche pour le voir.

Veuillez le noter dans l'espace fourni ci-dessous, et conserver le tout pour référence future.

NUMÉRO DE MODÈLE EAH-A800

NUMÉRO DE SÉRIE _____

Homologation :

DATE D'ACHAT _____

DÉTAILLANT _____

ADRESSE DU DÉTAILLANT _____

N° DE TÉLÉPHONE _____

Useful information
(Only for Latin American countries)

Customer Service

Customer Service Directory

Obtain products information and operative assistant; localize the closer distributor or Service Center; buy spare parts and accessories by our Web Site to Latin America or calling our Contact Center:

COUNTRY	WEB SITE	CONTACT CENTER
Panama	www.panasonic.com/pa/soporte/	800-7262
Colombia	www.panasonic.com/co/soporte/	01-8000-947262
Ecuador	www.panasonic.com/pa/soporte/	1-800-726276
Costa Rica	www.panasonic.com/pa/soporte/	800-7262737
El Salvador	www.panasonic.com/pa/soporte/	800-7262
Guatemala	www.panasonic.com/pa/soporte/	1-801-811-7262
Uruguay	www.panasonic.com/pa/soporte/	0-800-7262
Paraguay	www.panasonic.com/pa/soporte/	Web Site
Chile	www.panasonic.com/cl/soporte/	800-390-602 022-797-5000
Peru	www.panasonic.com/pe/soporte/	0800-00726
Venezuela	www.panasonic.com/pa/soporte/	Web Site
Mexico	www.panasonic.com/mx/soporte/	800-847-7262 55-5000-1200
Argentina		0800-333-7262 0810-321-7262
Dominican Rep.	www.panasonic.com/pa/soporte/	809-200-8000

For Caribbean countries that speak English please enter this web site in order to find information of our products and operative assistant:
www.panasonic.com/caribbean

Información útil
(Solo para los países de América Latina)

Atención al Cliente

Directorio de Atención al cliente

Obtenga información de productos y asistencia operativa, localice el Centro de Servicio más cercano y compre repuestos y accesorios a través de nuestro Sitio Web o llamando a nuestro Contact Center:

PAIS	SITIO WEB	CONTACT CENTER
Panamá	www.panasonic.com/pa/soporte/	800-7262
Colombia	www.panasonic.com/co/soporte/	01-8000-947262
Ecuador	www.panasonic.com/pa/soporte/	1-800-726276
Costa Rica	www.panasonic.com/pa/soporte/	800-7262737
El Salvador	www.panasonic.com/pa/soporte/	800-7262
Guatemala	www.panasonic.com/pa/soporte/	1-801-811-7262
Uruguay	www.panasonic.com/pa/soporte/	0-800-7262
Paraguay	www.panasonic.com/pa/soporte/	Sitio Web
Chile	www.panasonic.com/cl/soporte/	800-390-602 022-797-5000
Perú	www.panasonic.com/pe/soporte/	0800-00726
Venezuela	www.panasonic.com/pa/soporte/	Sitio Web
México	www.panasonic.com/mx/soporte/	800-847-7262 55-5000-1200
Argentina		0800-333-7262 0810-321-7262
R. Dominicana	www.panasonic.com/pa/soporte/	809-200-8000

Para países del CARIBE anglosajón, por favor dirigirse a nuestro sitio web para información de productos y asistencia operativa:
www.panasonic.com/caribbean

For Australia

Panasonic Australia Pty. Ltd. 1 Innovation Road, Macquarie Park NSW 2113

Provides a 12 month parts & labour warranty on this product for manufacturing defects from date of purchase. In addition to your rights under this warranty, Panasonic products come with consumer guarantees that cannot be excluded under the Australian Consumer Law. If there is a major failure with the product, you can reject the product and elect to have a refund or to have the product replaced or if you wish you may elect to keep the goods and be compensated for the drop in value of the goods. You are also entitled to have the product repaired or replaced if the product fails to be of acceptable quality and the failure does not amount to a major failure.

For full details or to claim warranty please contact Panasonic Customer Care on **132 600** or visit www.panasonic.com.au.

PRO-031-F10 Issue 2.0

August 2016

For Thailand only

This telecommunication equipment conforms to NTC/NBTC technical requirement.

For Singapore only

Complies with IMDA Standards DB01017
--

For the United Kingdom and Ireland customers

Sales and Support Information Customer Communications Centre

- For customers within the UK: 0333 222 8777
- For customers within Ireland: 01 447 5229
- Monday–Friday 9:00 am–5:00 pm (Excluding public holidays).
- For further support on your product, please visit our website:
www.technics.com/uk/



Importer for UK:
Panasonic UK, a branch of Panasonic Marketing
Europe GmbH, Maxis 2, Western Road,
Bracknell, Berkshire, RG12 1RT

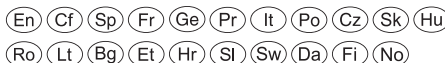


Manufactured by:

Panasonic Corporation
Kadoma, Osaka, Japan
Authorized Representative in Europe: Panasonic Marketing Europe GmbH
Panasonic Testing Centre
Winsbergring 15, 22525 Hamburg, Germany



Panasonic Corporation of North America
Two Riverfront Plaza, Newark, NJ 07102-5490
<http://shop.panasonic.com>



Panasonic Canada Inc.
5770 Ambler Drive, Mississauga, Ontario L4W 2T3
www.panasonic.com



Panasonic Corporation
<http://www.panasonic.com>

© Panasonic Corporation 2021

Printed in Malaysia/Imprimé en Malaisie/Impreso en Malasia

PNQW6082ZA
F1021MH0



Warranty Card

Rediscover Music

Technics

Seerianumber, Sērijas Nr, Serijos Nr, Numer fabryczny, Sériové číslo, Sório-
vó číslo, Gyári szám, Сериски број, Numri serik, Serijski broj aparata

Mudel, Modelis, Modelis, Model, Model, Modelio, Típus, modela, Model, Модел, Model,
Model, Модел, Modeli

Vásárlás dátuma, Datum izročitve blaga, Data vânzării, Дата на покупка, Da-
tumkupovine, Датум на купување, Dtum kupnje, Data zakupu

Maaletooja / Riik, Sākotnējais importētājs / Valsts, Pirminis importuotojas / šalis, Pierwotnyim-
porter/Kraj, Dovozca/krajina, Dovoze/Země, Uvoznik/poreklo, Eredeti importőr /Ország, Pier-
wotny importer / Kraj, Importatorul / Țara, Данни за продавача / Държава, Uvoznik / Država,
Ovlašćeni uvoznik / Zemlja, Ovlašteni uvoznik / Zemlja, Увозник/Земја, Importuesi/Shteti

Kliendi nimi ja aadress, Pircēja nosaukums / vārds, uzvārds un adrese, Kliento pa-
vardē iradresas, Nazwisko lub nazwa oraz adres nabywcy, Jméno a adresa zákazní-
ka, Meno a adresa zákazníka, Vásárló neve és címe, Naziv in naslov kupca, Numele
clientului și adresa, Данни за купувача / Име, Адрес, Име i adresa kupca, Име i pre-
zime kupca i adresa, Имеи адреса на купувачот, emri dhe adresa e blerësit

Edasimüüja tempel, Izplatītāja zīmogs, Platintojo antspaudas, Pieczęć sprze-
dawcy, Razítkoprodejce, Pečiatka predajcu, Forgalmazó bélyegzője, Podpis in
žig prodajalca, Ștampilavânzătorului, Подпис и печат, Žig prodavača, Pečat
prodavca, Печат и потпис на продавачот, Firma dhe vula e shitësit



Caution: Please retain your sales receipt.

Achtung: Bitte bewahren Sie Ihren Kaufbeleg auf.

Attention: Veuillez garder soigneusement votre preuve d'achat
(facture ou ticket de caisse)

Aandacht: Gelieve uw aankoopbewijs (factuur of kassabon)
Zorgvuldig te bewaren.

Attenzione: Per favore Conservate il vostro scontrino di acquisto

Importante: Por favor, conserve siempre el justificante de compra.

Vigtig information: Husk at gemme købskvitteringen på produktet.

Viktig information: Spara dina köphandlingar (kvitto) på produkten.

OBS! Vennligst ta vare på din kjøpskvittering.

Tärkeää: Säilytä tuotteen ostosokumentit (kuitti).

Uwaga: Prosimy o zachowanie dowodu zakupu.

Upozornění: Uschovejte si, prosím, Váš nákupní doklad k výrobku.

Oprez: Molimo, sačuvajte svoj račun.

Внимание: Моля запазете касовата бележка

Upozornenie: Uschovajte si, prosím, Váš nákupný doklad k výrobku.

Atentie! Va rugam sa pastrati factura sau bonul fiscal obtinute la
achizitia produsului.

Prosimo, shranite svoj račun.

Figyelmeztetés: Kérjük, őrizze meg a számlát.

Demesio: Prašome išsaugoti pirkimo kvitą.

PAN EUROPEAN GUARANTEE – TECHNICS PRODUCTS

APPLICABLE IN UNITED KINGDOM and REPUBLIC OF IRELAND

The Pan European Guarantee applies to your product. You may obtain a copy of the guarantee from:

- Website: www.technics.com/uk/support/
- Technics Customer Services Team:
- UK - 0333 222 8777 / IRELAND - 014475229

PRODUKTE DER MARKE TECHNICS

Diese Bedingungen sind gültig für Käufe in Deutschland und Österreich

Für Ihr Produkt gilt die Pan European Garantie. Eine Kopie der Garantiebedingungen erhalten Sie auf Anfrage über:

- Ihren Händler, bei dem Sie Ihr Gerät gekauft haben
- die Website: www.technics.com/de/support/
- die Technics Konsumenten Hotline: 069 2222 1313* (Deutschland)
- die Technics Konsumenten Hotline: 0192 87887* (Österreich)

* zum regulären Festnetztarif Ihres Telefonanbieters. (Preise aus dem Mobilfunknetz können abweichen.)

PAN EUROPÄISCHE GARANTIE - PRODUKTE DER MARKE TECHNICS

GÜLTIG IN DER Schweiz

Für Ihr Produkt ist die Pan European Guarantee gültig. Informationen zu den Garantiebestimmungen erhalten Sie von Ihrem Händler oder auf www.technics.com.

Votre produit est soumis à la Pan European Guarantee. Vous trouverez les informations des conditions de garantie auprès de votre revendeur ou sur www.technics.com.

Il vostro prodotto è sommerso alle condizioni della Pan European Guarantee. Troverete delle informazioni delle condizioni di garanzia più dettagliate presso il vostro rivenditore oppure su www.technics.com



Delivering the Ultimate Emotive Musical Experience to All

At Technics we understand that the listening experience is not purely about technology but the magical and emotional relationship between people and music.

We want people to experience music as it was originally intended and enable them to feel the emotional impact that enthuses and delights them.

Through delivering this experience we want to support the development and enjoyment of the world's many musical cultures. This is our philosophy.

With a combination of our love of music and the vast high-end audio experience of the Technics team, we stand committed to building a brand that provides the ultimate emotive musical experience by music lovers, for music lovers.

Apportez à tous l'expérience musicale empreinte d'émotions

Chez Technics, nous savons que l'expérience de l'écoute n'est pas purement et simplement une question de technologie, mais de relation magique entre les personnes et la musique.

Nous voulons que tout un chacun puisse ressentir la musique telle qu'elle a été conçue à l'origine et lui permettre de ressentir le choc émotionnel qu'il brûle de connaître.

En apportant ce vécu, nous cherchons à accompagner le développement et le plaisir des nombreuses cultures musicales du monde. Telle est notre philosophie.

Ici et maintenant, alliant l'amour de la musique et la grande expérience musicale de l'équipe Technics, nous sommes pleinement déterminés à construire une marque qui apporte le vécu musical émotionnel aux fervents de la musique.

Director
Directeur
Michiko Ogawa

A stylized, handwritten signature in black ink that reads "Michiko Ogawa". The signature is fluid and cursive, with a long horizontal line extending from the end of the name.

Music is borderless and timeless, touching people's hearts across cultures and generations.

Each day the discovery of a truly emotive experience from an unencountered sound awaits.

Let us take you on your journey to rediscover music.

Sans frontières, la musique est aussi intemporelle, touchant le coeur des gens en traversant les cultures et les générations.

Tous les jours, nous attendons la révélation d'une expérience émotionnelle authentique à partir d'un son venu de nulle part.

Permettez-nous de vous emmener en voyage pour redécouvrir la musique.

Rediscover Music™

Technics

PNQW5808ZA

