



Manual is for the following model:
G-77-N23EN

Manual is for the following model:
G-77-N23EN

Instruction Manual

The logo consists of the text "G-77" in a bold, white, sans-serif font, centered within a solid black rectangular background.

G-77

FOR YOUR FUTURE REFERENCE

- This easy-to-use manual will guide you in getting the best use of your cooler.
- Remember to record the model number and the serial number. This information can be found on the inside of your cooler.
- Keep your receipt with this manual for future warranty service.

Model #: _____

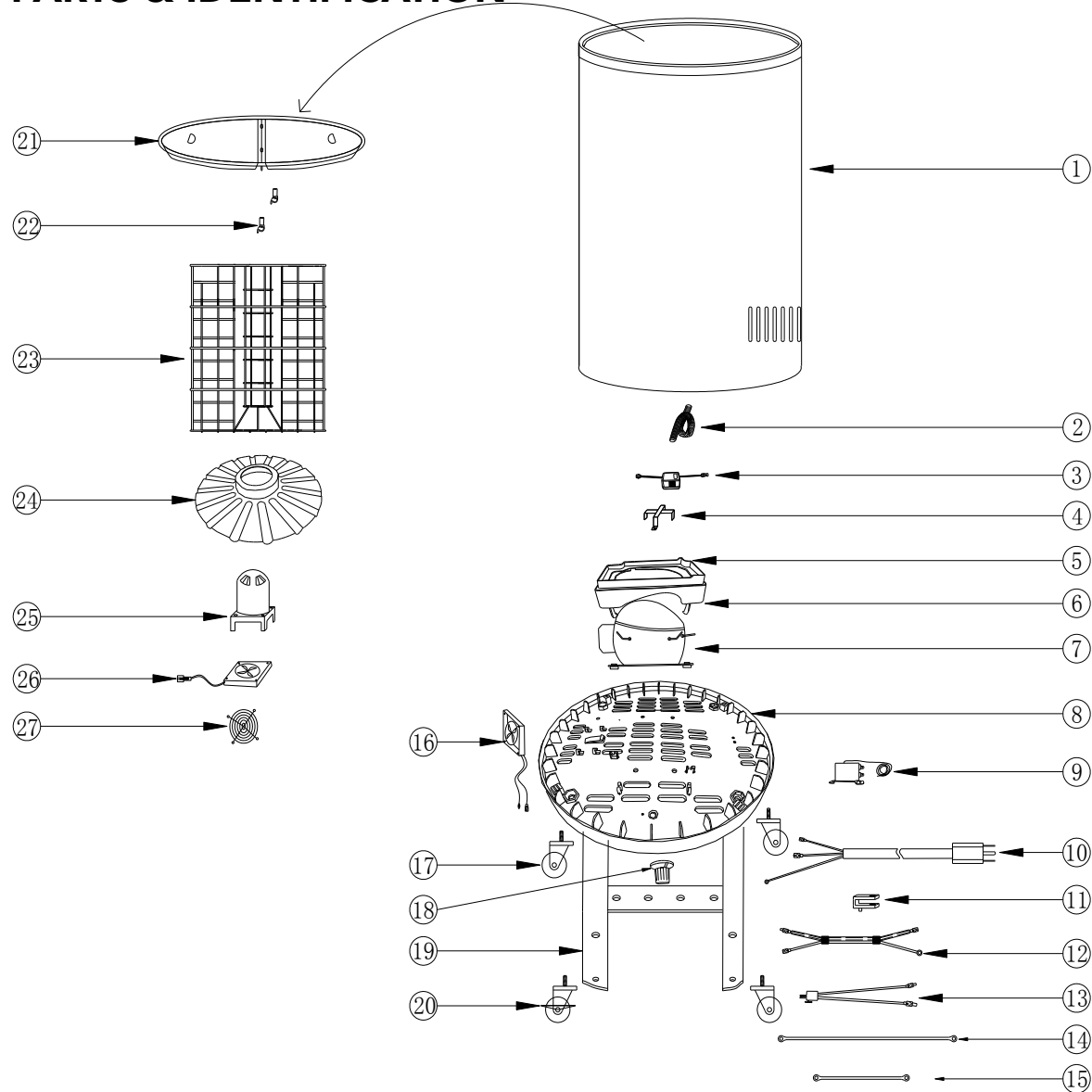
Serial #: _____

Date of Purchase: _____

TABLE OF CONTENTS

Parts and Identification	2
Safety Instructions.....	3
Preparation.....	4
Location	5
Installation and Operation.....	5
Clamp Installation.....	5
Beverage Storage.....	6
Maintenance	6
Changing Graphics	7
Cleaning	8
Flammable R600a Warnings	8
Troubleshooting	9
Circuit Diagram.....	10

PARTS & IDENTIFICATION



1. Cooler Cabinet
2. Outlet Pipe
3. Transformer
4. Transformer Box
5. Drip Pan Cover
6. Drip Pan
7. Compressor
8. Bottom Plate
9. Thermostat
10. Power Cord
11. Power Cord Clip
12. Thermostat Wire
13. Transformer Connecting Line
14. Ground Line

15. Fan Ground Line
16. Condenser Fan
17. Caster (3)
18. Thermostat Knob
19. Base Supporter
20. Caster with Lock
21. Lid (2)
22. Lid Clip(2)
23. Basket
24. Evaporator Baffle
25. Evaporator Fan Cover
26. Evaporator Fan
27. Evaporator Fan Grill

SAFETY INSTRUCTIONS

When using this appliance, always follow the basic safety precautions:

1. Read the entire User's Manual before operating this appliance.
2. Use this appliance only for its intended purpose as described in this User's Manual.
3. This cooler must be properly installed in accordance with the installation instructions before being used. See grounding instructions.
4. IDW requires that a dedicated circuit be used for the unit. Failure to do so voids warranty.
5. Never unplug your cooler by pulling on the power cord. Always grasp the plug firmly and pull it straight out from the outlet.
6. Unplug your cooler before cleaning or making any repairs.
Note: If for any reason this product requires service, we strongly recommend that a certified technician perform the service.
7. When disconnecting the power source, wait at least 5 minutes to reconnect the power to avoid damage to the compressor and the cooling system.
8. Immediately repair or replace all electrical cords that have become frayed or otherwise damaged. Do not use a cord that shows cracks or abrasion damage along its length, the plug or the connector end.
9. Do not operate or store your cooler near or around explosive fumes, gasoline or other flammable vapors and liquids.
10. Do not use flammable liquids to clean unit.
11. Setting the temperature control to the 0 position does not remove power to the light circuit, perimeter heaters, or evaporator fans.
12. Do not adjust the temperature control. The temperature control is factory set between levels 4 and 5 for maximum performance.
13. To avoid damage to the casters, do not transport the cooler on rough surfaces.

IMPORTANT!
Please Save These Instructions
For Proper Disposal of the Refrigerator!

PRE-CAUTION, NON-OPERATING COOLERS SHOULD HAVE:

1. Door removed
2. Baskets kept in place in order to prevent any small child from climbing inside cooler

FOR PROPER DISPOSAL OF COOLER: Distributors / retailers need to contact a qualified service technician:

1. To recover all refrigerant from the cooler
2. To remove the compressor or remove the oil from the compressor

Then the distributor / retailer can contact their local metal recycling center to pick up the remaining cabinet, baskets, etc. By law, disposal of hazardous wastes may be subject to fines and imprisonment under the provisions of the environmental regulations. For more information please visit: <http://www.epa.gov/osw/hazard/index.htm>

INSTALLATION

Installation of the cooler must be done according to applicable local codes or equivalent.

Ambient Environment

- Place cooler on an even surface to reduce vibration and noise.
- To transport, do not tilt the cooler beyond a 45 degree angle.
- Do not place cooler in direct sunlight or near any heat sources.
- Do not place cooler in environment temperatures that exceed 109°F.
- Do not place cooler in below normal temperatures.
- Do not place cooler in extreme humid environments, this may cause components to rust.
- Do not place cooler near constant running or splattering water, this may cause immediate damage to refrigeration system.
- Must allow at least 4" between rear of cooler and wall for proper ventilation and heat dissipation of cooler.
- Do not place furniture or other articles with sharp edges near the cooler in order to prevent damage to the glass door.
- This cooler is for indoor use.
- Place unit in it's final location, making certain there is adequate ventilation in the room.

WARNING: Warranty is void if ventilation is insufficient.

PREPARATION PRIOR TO OPERATION

Unpacking

- Remove all packaging materials before using cooler. This includes: foam pedestal, adhesive tape (used to fix accessories) and protective gaskets.
- Inspect cooler for concealed damage. Immediately file a claim with the freight carrier if there is damage. IDW is not responsible for damage incurred during shipping.
- Cooler must remain unplugged in an upright position for 1 hour prior to use.
- Clean the interior surface with a soft cloth and lukewarm water before operation.
- Ensure that drain hose or hoses are positioned in the pan.
- Remove plug and cord from inside the lower rear of the cooler.
- The unit should be placed close enough to the electrical supply so that extension cords are not used.

Electrical Requirements

- This model operates with a 110V/60Hz power supply. Check the electrical outlet for proper voltage.
- Dedicate one outlet for the use of the cooler.
- Do not use an extension cord or any other multiple connectors as this can lead to compressor failure.
- If the cord is damaged, it must be replaced.
- For your safety, plug the unit into a grounded wall outlet. Please check with a certified electrician for details.

WARNING: Do not use extension cords.

WARNING: Compressor warranties are void if compressor burns out due to low voltage.

WARNING: Power cord ground pin must NOT be removed!



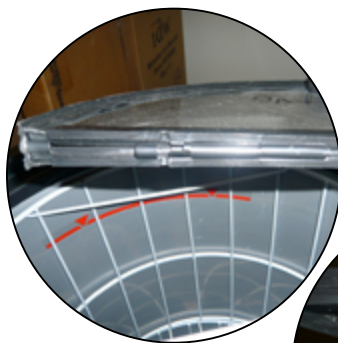
LEVELING/LOCATION

- Place unit in a well-ventilated area.
- **WARNING:** Warranty is void if ventilation is insufficient.
- Unit must be leveled for proper operation, this will help prevent condensation.
- The cooler should be leveled front to back and side to side with a leveler.

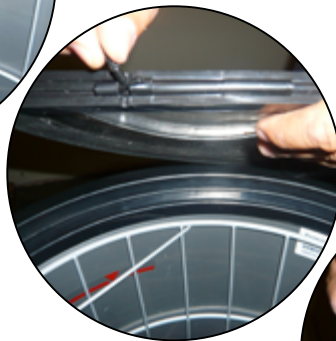
INSTALLATION AND OPERATION

- Connect the Power Source. After 30 minutes of operation, the unit should show signs of cooling.
- After the empty cooler has been operating for a period of 5 hours, the unit can be loaded with products.

CLAMP INSTALLATION



- The clamp secures the lid assembly to the main body of the cabinet
- 1 Locate the (2) notches on the interior of the lid



- 2 Snap the (2) bolts into the notches of the lid.



- 3 Screw the clamps onto the bolts.



- 4 Hook the two clamps onto the center bar of the basket.

BEVERAGE STORAGE

- Do not overload the cooler beyond the red limitation line.
- Leave adequate space between beverage cans to allow air circulation.
- This cooler is primarily for storing beverage cans and plastic bottles. Avoid putting glass containers in the cooler.
- All beverage products should be properly sealed to avoid leaking into the cooler.



MAINTENANCE

Accessing Cooler Components:



- 1 Remove the basket from the inside of the cooler.



- 2 Remove the baffle from cooler.



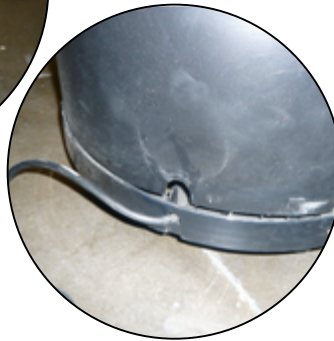
- 3 Using a Phillips screwdriver, unscrew the (4) screws at the base of the cooler.



4 The body of the cooler can now be worked free from the frame.



5 Lay the body of the cooler on its side to access components.



6 To re-assemble the cooler align the notch at base of the body with the cooler cord. Then reverse steps 1-5.

Changing Electric Impulse Cooler Graphics:



1 Place graphic around barrel, making sure to align the grill holes in the graphic with the grill holes on the cooler to allow proper ventilation for the cooler.



2 Wedge the graphic under the plastic frame of the cooler.



3 Remove the covering on the double-stick tape to adhere the graphic in place.

MAINTENANCE

Cleaning

- Before cleaning the appliance, always remember to unplug it.
- Unplug the cooler at the electrical outlet; never pull the service cord.
- Do not use sharp or pointed objects for cleaning.
- Clean the inside cabinet of the cooler with a clean damp cloth. Avoid damage by using non-abrasive and non-flammable cleaning products.
- Clean the condenser at least once a month with a vacuum cleaner or a brush to eliminate the dust accumulation.

Power Failure

- Please minimize the frequency of opening the door during a power failure.
- If your cooler is unused for an extended period of time, unplug, empty, and clean your cooler and keep the door open to avoid condensation, formation of mold, or odors.

Moving The Cooler

- Empty the unit.
- Secure all loose parts inside the cooler.
- Tape the door shut.
- During transportation, make sure that the cooler is in an upright position.



CAUTION FLAMMABLE REFRIGERANT

- **DANGER** – Risk Of Fire Or Explosion. Flammable Refrigerant Used. To Be Repaired Only By Trained Service Personnel. Do Not Puncture Refrigerant Tubing.
- **CAUTION** – Risk Of Fire Or Explosion. Flammable Refrigerant Used. Consult Repair Manual/Owner's Guide Before Attempting To Install or Service This Product. All Safety Precautions Must be Followed.
- **CAUTION** – Risk Of Fire Or Explosion. Dispose Of Properly In Accordance With Federal Or Local Regulations. Flammable Refrigerant Used.
- **CAUTION** – Risk Of Fire Or Explosion Due To Puncture Of Refrigerant Tubing; Follow Handling Instructions Carefully. Flammable Refrigerant Used.
- **CAREFUL** - Handling, moving and operating of the refrigerator or freezer to avoid either damaging the refrigerant tubing, or increasing the risk of a leak.
- **CAUTION** - Component parts shall be replaced with like components and that servicing shall be done by factory authorized service personnel, so as to minimize the risk of possible ignition due to incorrect parts or improper service.

TROUBLESHOOTING

If your cooler is not working properly:

- Check the electrical outlet for power, and that the plug is properly inserted.
- Check to see if the circuit breaker is tripped or the fuse is blown.
- Check the condenser for proper cleaning.

If your cooler is making noise:

- Check that the cooler is level and on a flat surface.

If the compressor turns on and off frequently:

- The room temperature is higher than normal.
- The door is not closed completely.
- The door gasket is not sealed well.
- There is insufficient clearance around the cooler.
- The temperature is not set properly.
- The cycling frequency will reduce when all of the cans reach the set temperature.

The following is not a malfunction:

- It is normal to hear gurgling sounds caused by the flow of refrigerant when each cooling cycle ends.

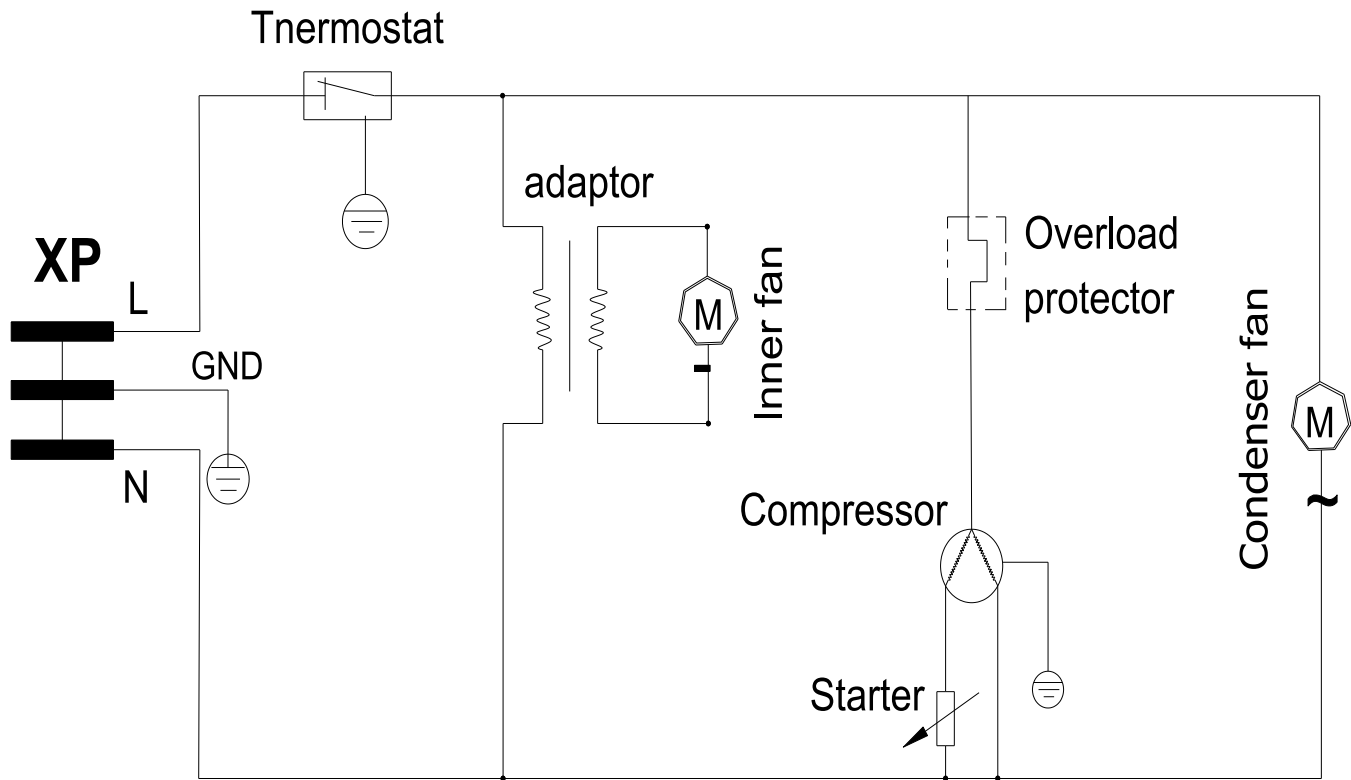
REFRIGERANT

- The G-77 Electric cooler utilizes R600a refrigerant.

SPECIFICATIONS

Model:	G-77 Electrical Impulse Cooler
Power Supply (V/Hz):	110V/60Hz or 220V/50Hz
Dimension (W x D x H):	22.25" x 22.25" x 33.25"
Box Dimension (W x D x H):	23" x 23" x 34"
Maximum Load Per Shelf:	N/A
NSF-7 Standard:	This equipment is intended for the storage and display of non-potentially hazardous bottled or canned products only.

CIRCUIT DIAGRAM





Innovative DisplayWorks, Inc.

To locate the distributor in your area go to: <http://www.idw.global/contact#distributors>
